

Appendix S1

Figure 1. Changes in the BREAST-Q subscale *Satisfaction with breast* between the follow-up time points.

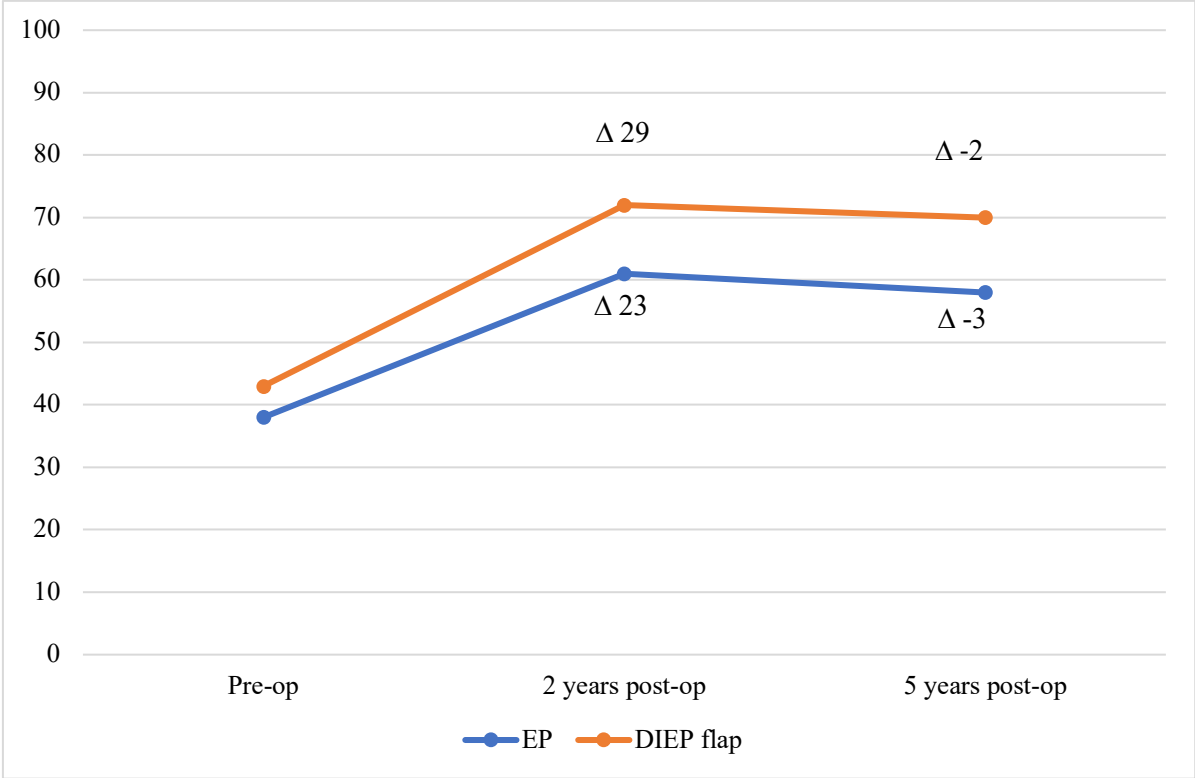


Figure 2. Changes in the BREAST-Q subscale *Psychosocial well-being* between the follow-up time points.

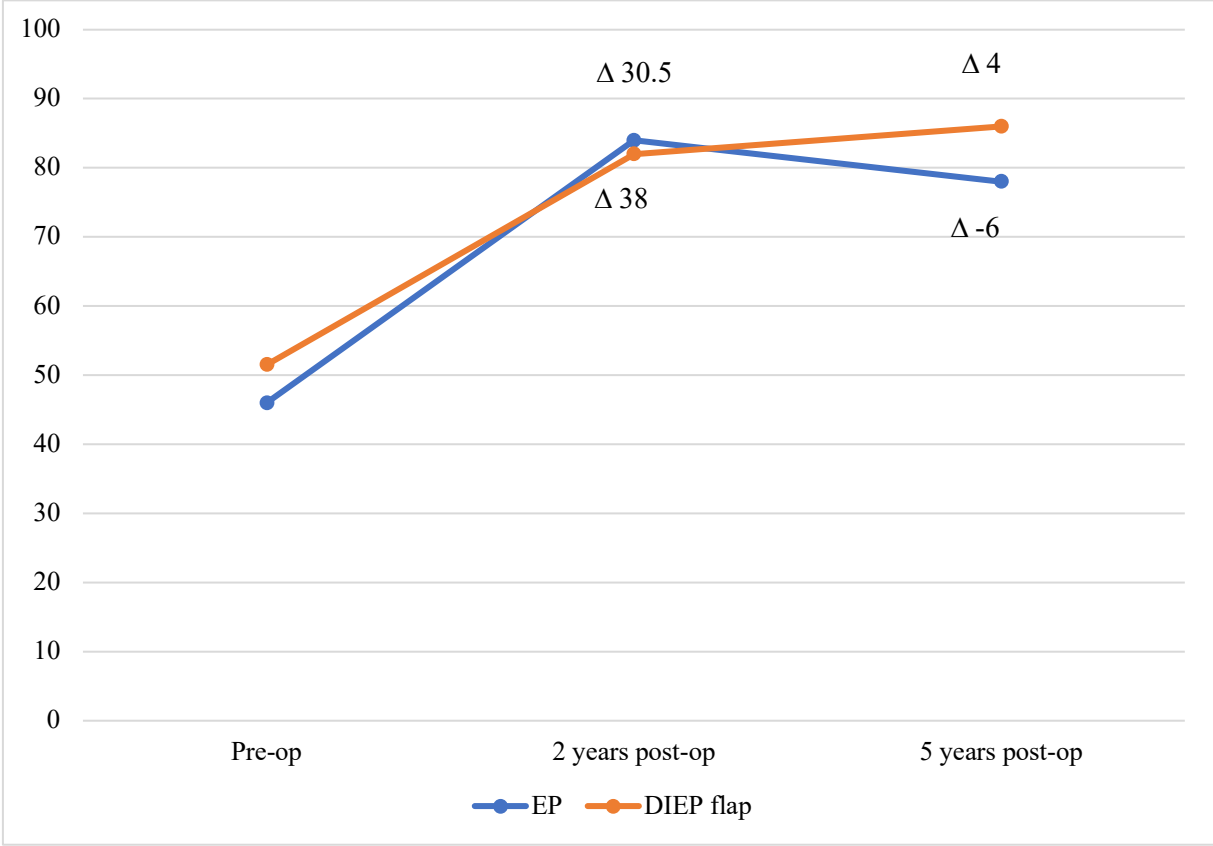


Figure 3. Changes in the BREAST-Q subscale *Sexual well-being* between the follow-up time points.

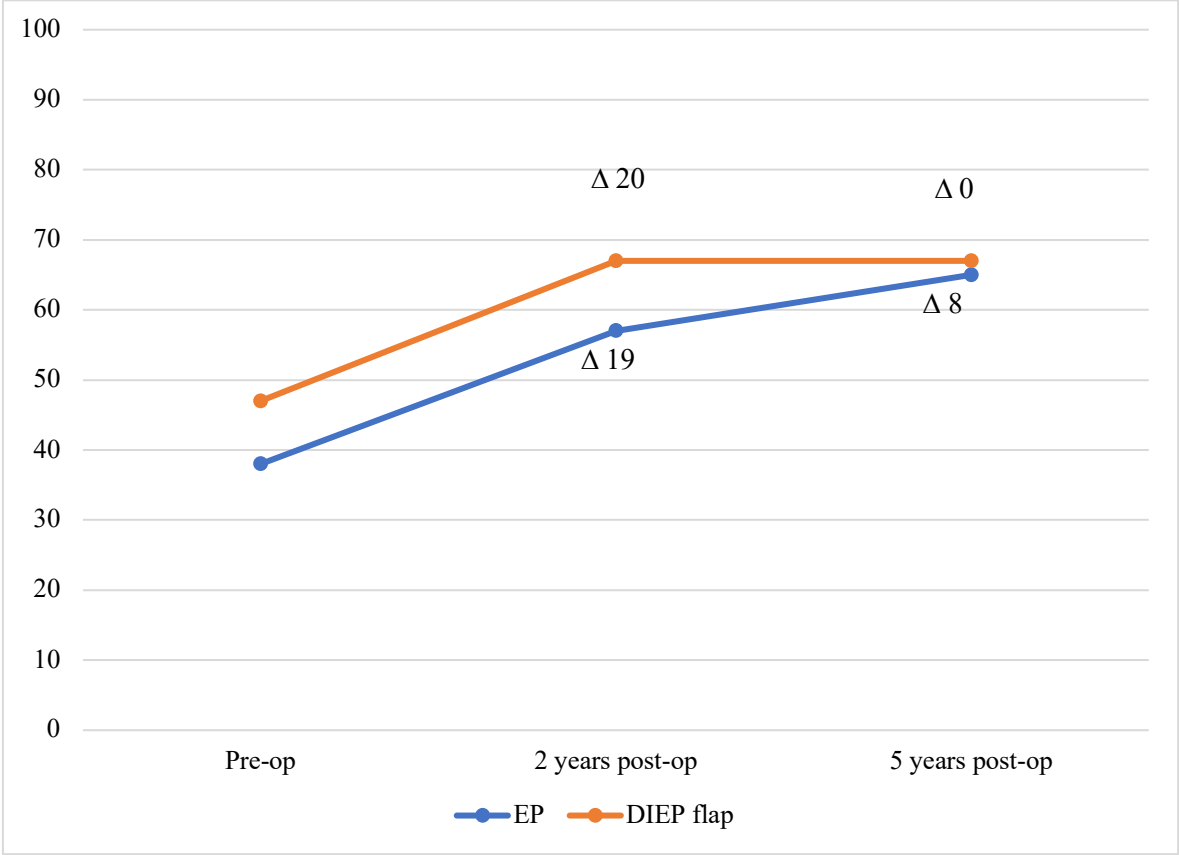


Figure 4. Changes in the BREAST-Q subscale *Physical well-being of chest* between the follow-up time points.

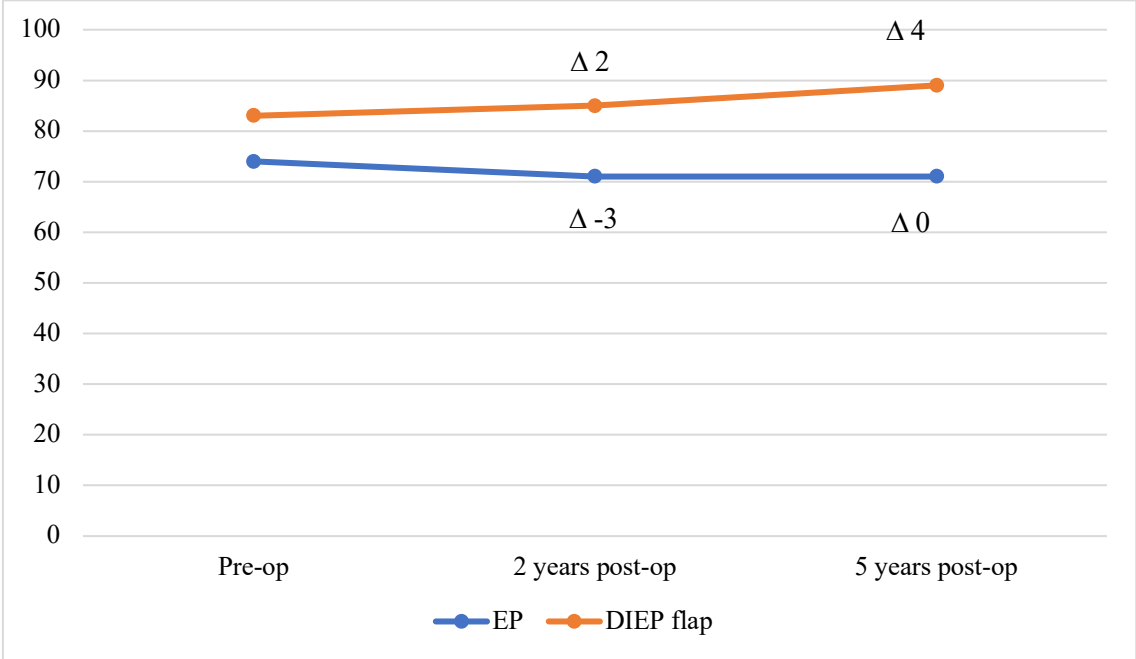


Figure 5. Changes in the BREAST-Q subscale *Physical well-being of abdomen* between the follow-up time points.

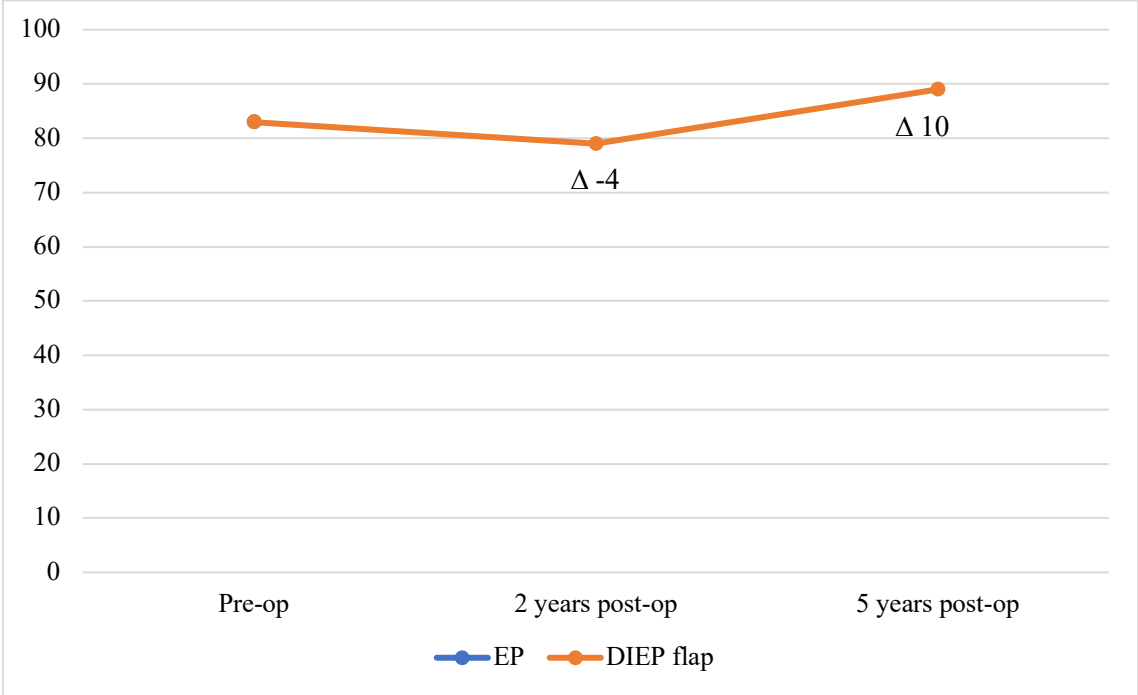


Table I. Comparison of the five-year postoperative BREAST-Q scores between the randomised and the non-randomised EP groups.

BREAST-Q subscale	Randomised to EP (n=25)	Non-randomised, EP (n=15)	p-value ^a
Satisfaction with breast	58 (49, 69)	53 (39, 58)	0.05
Satisfaction with outcome	75 (67, 100)	75 (53, 86)	0.20
Psychosocial well-being	78 (57, 100)	63 (40, 86)	0.16
Sexual well-being	65 (33, 83)	48 (30, 65)	0.18
Physical well-being of chest	71 (60, 91)	79 (68, 87)	0.55
Satisfaction with nipples	50 (45, 70)	55 (29, 71)	0.83
Satisfaction with information	64 (55, 88)	58 (45, 72)	0.16
Satisfaction with surgeon	100 (87, 100)	82 (58, 100)	0.09
Satisfaction with medical staff	100 (100, 100)	100 (81, 100)	0.39
Satisfaction with office staff	100 (100, 100)	100 (86, 100)	0.80

Presented in median (IQR).

^aMann-Whitney U test.