

Supplementary material has been published as submitted. It has not been copyedited, typeset or checked for scientific content by Acta Dermato-Venereologica

Fig. S1. Cutpoint in each cancer based on ACLY levels calculated by the cutoff algorithm.

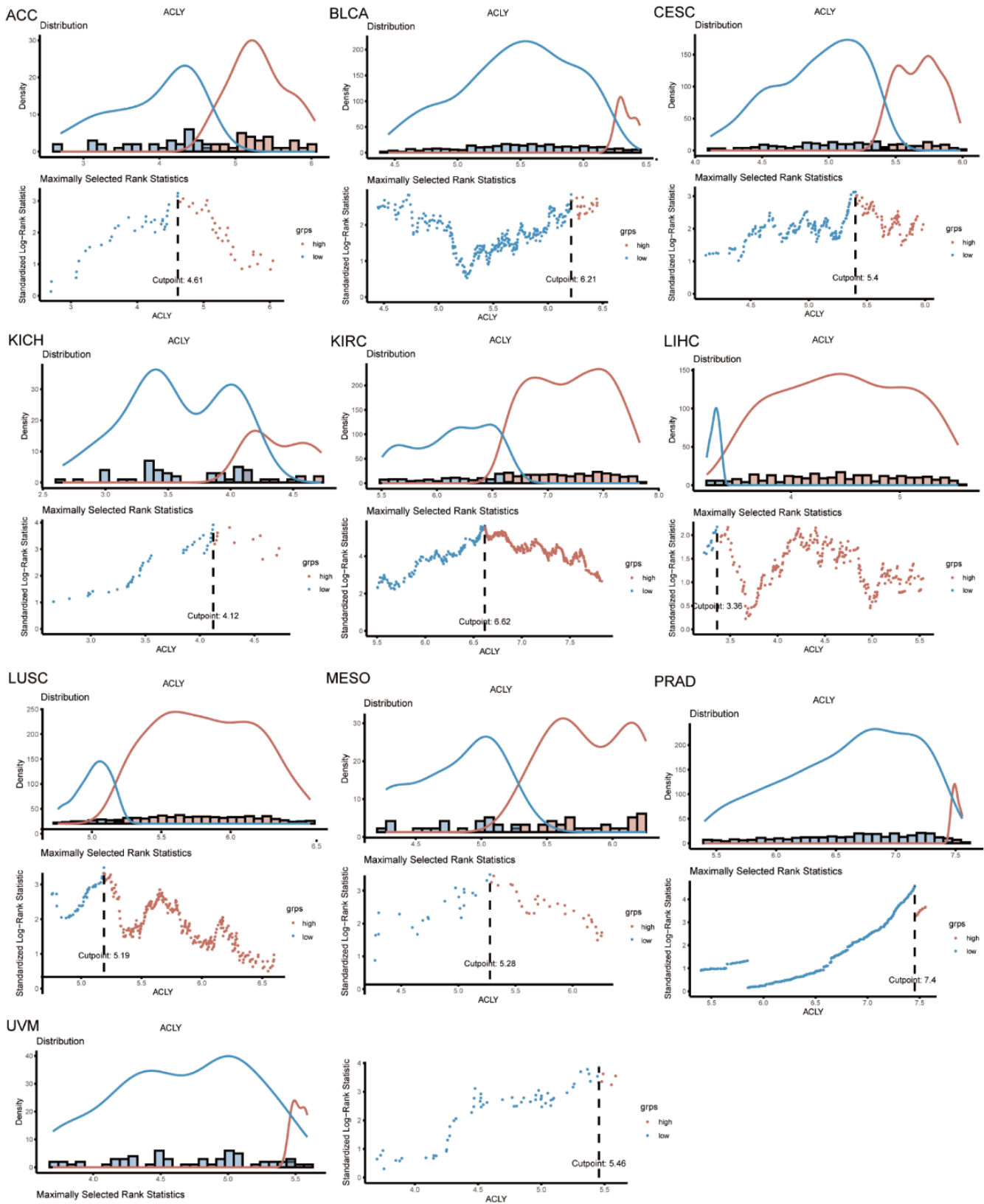


Fig. S2 (A) qRT-PCR analysis of lipid synthesis-related genes in A431 and SCL-1 cells. (B) Growth rate of subcutaneous tumor in nude mice. (C) Mass of subcutaneous tumor in nude mice on day 12(N=3). * $p < 0.05$, ** $p < 0.01$, *** $p < 0.001$, vs. normal control.

