

Fig. S1. Capillaroscopic and histopathological findings of (a–c) cases 1 and (d–f) 2. (a, b) Capillaroscopy showing blue-grey dot (magnification $\times 590$). (b) Blue-grey dots and arborizing vessels (*white arrow*) (magnification $\times 590$). (c) Various sizes and shapes of tumour lobules composed of basaloid cells (haematoxylin and eosin (HE), magnification $\times 40$). (d) Capillaroscopy showing homogeneous blue-black pigmentation (magnification $\times 145$) and tortuous and looped vessels (*white arrow*) in the area of pigmentation (magnification $\times 590$). (e) Various sizes of tumour lobules composed of basaloid cells with hyperpigmentation (HE, magnification $\times 40$).

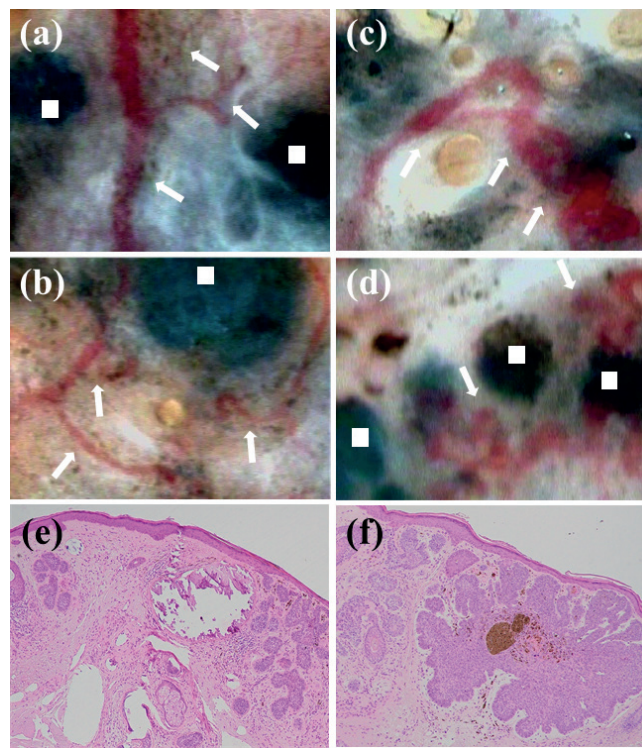


Fig. S2. Capillaroscopic and histopathological findings of case 3: (a, b) Capillaroscopy showing large blue-grey globules (*white square*) and arborizing vessels (*white arrow*) (magnification $\times 590$). (c) Capillaroscopy showing tortuous and looped vessels (*white arrow*) (magnification $\times 590$). (d) Capillaroscopy showing tortuous vessels (*white arrow*) and blue-grey globules (*white square*) (magnification $\times 590$). (e, f) Various sizes and shaped lobules composed of basaloid cells with hyperpigmentation (HE, magnification $\times 40$).

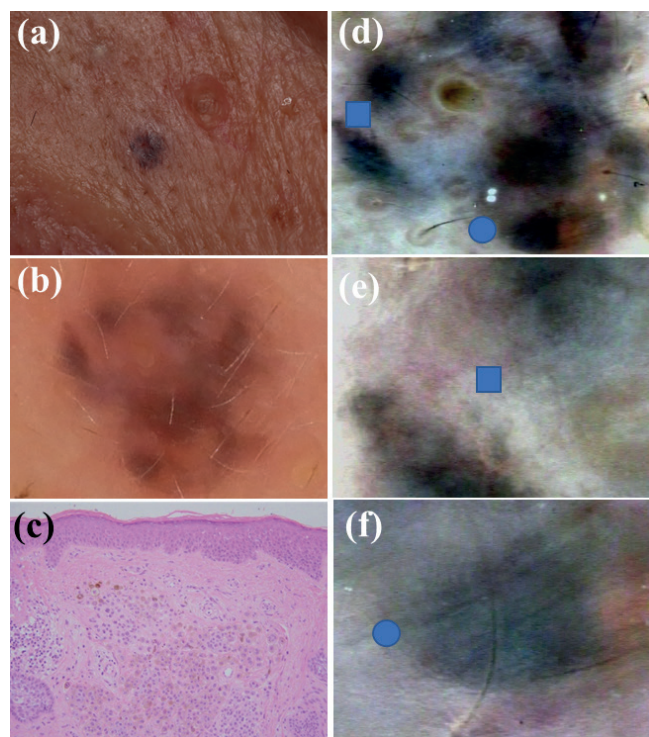


Fig. S3. Clinical, dermoscopic and capillaroscopic features of intradermal naevi. (a) An 80-year-old Japanese man presented with 2×2 mm black macule on the left cheek. (b) Dermoscopy showing pale black-brown globules (polarized, magnification ×20). (c) Naevi are seen in the dermis (HE, magnification ×200). (d) Capillaroscopy showing multiple blue-grey globules without distinct vascular structure (*blue circle, blue square*) (magnification ×145). (e-f) Capillaroscopy revealed multiple blue-grey globules of relatively uniform size and colour, without distinct vascular structures (*blue circle, blue square*) (magnification ×590).

Table SI. Dermoscopic features in small basal cell carcinoma (tumour diameter)

Dermoscopic features	Takahashi et al. (4) <i>n</i> = 6 (<3 mm)	Pampena et al. (5) <i>n</i> = 12 (<5 mm)	Sanchez-Martin et al. (6) <i>n</i> = 34 (≤3 mm)	Popadic et al. (7) <i>n</i> = 62 (≤10 mm)	Longo et al. (8) <i>n</i> = 87 (mean 3 ± 0.85 mm, range 1–4.5 mm)	Case 1 (3×2 mm)	Case 2 (1×2 mm)	Case 3 (nasal dorsum) (2×1 mm)	Case 3 (nasolabial) (2×2 mm)
Classic features									
Large blue-grey ovoid nests	67%	42%	29%	29%	44%	-	-	-	+
Multiple blue-grey globules	100%	25%	38%	27%	39%	-	-	+	-
Leaf-like areas	0%	25%	18%	21%	18%	-	-	-	-
Arborizing vessels	0%	50%	26%	26%	49%	-	-	-	-
Spoke wheel areas	0%	ND	3%	15%	6%	-	-	-	-
Ulceration	0%	ND	6%	18%	14%	-	-	-	-
Shiny white areas	0%	17%	ND	ND	ND	-	-	-	-
Non-classic features									
Short fine telangiectasia	17%	ND	ND	11%	9%	-	-	+	-
Multiple in-focus blue grey dots	50%	17%	41%	ND	22%	+	-	+	+

ND: not described.