

Supplementary material has been published as submitted. It has not been copyedited, or typeset by Acta Dermato-Venereologica

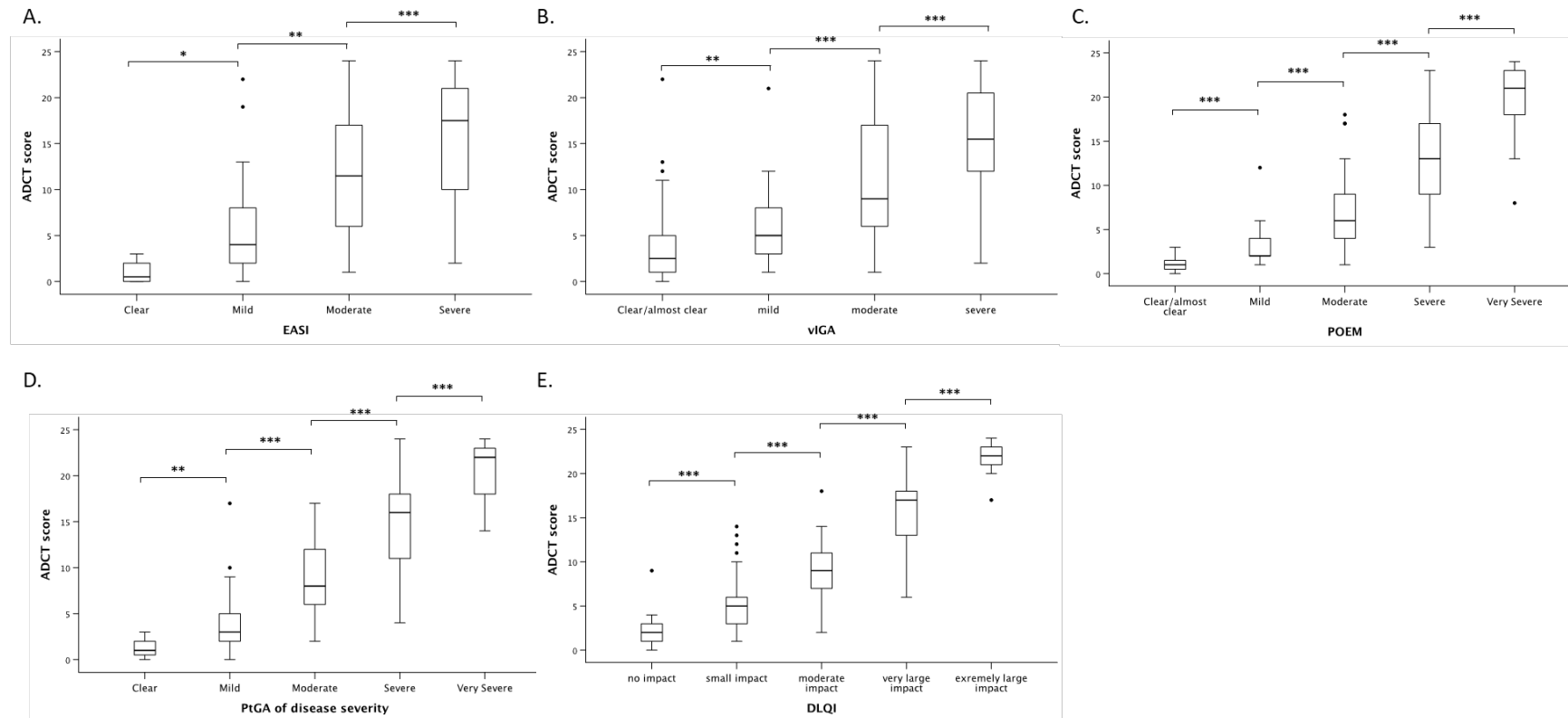


Figure S1. ADCT total scores showing comparison between different patient groups based on: A. EASI; B. vIGA; C. POEM; D. PtGA of disease severity; E. DLQI. The bold line indicates median values of ADCT total score, the box the interquartile range and error bars minimum and maximum values. ADCT, Atopic Dermatitis Control Tool; EASI, Eczema Area and Severity Index; vIGA, validated Investigator Global Assessment; POEM, Patient-Oriented Eczema Measure; PtGA, Patient-reported Global Assessment; DLQI, Dermatology Life Quality Index. Mann-Whitney U test was used to compare median values of ADCT total score between groups. *p-value<0.05, **p-value<0.01, ***p-value<0.001.

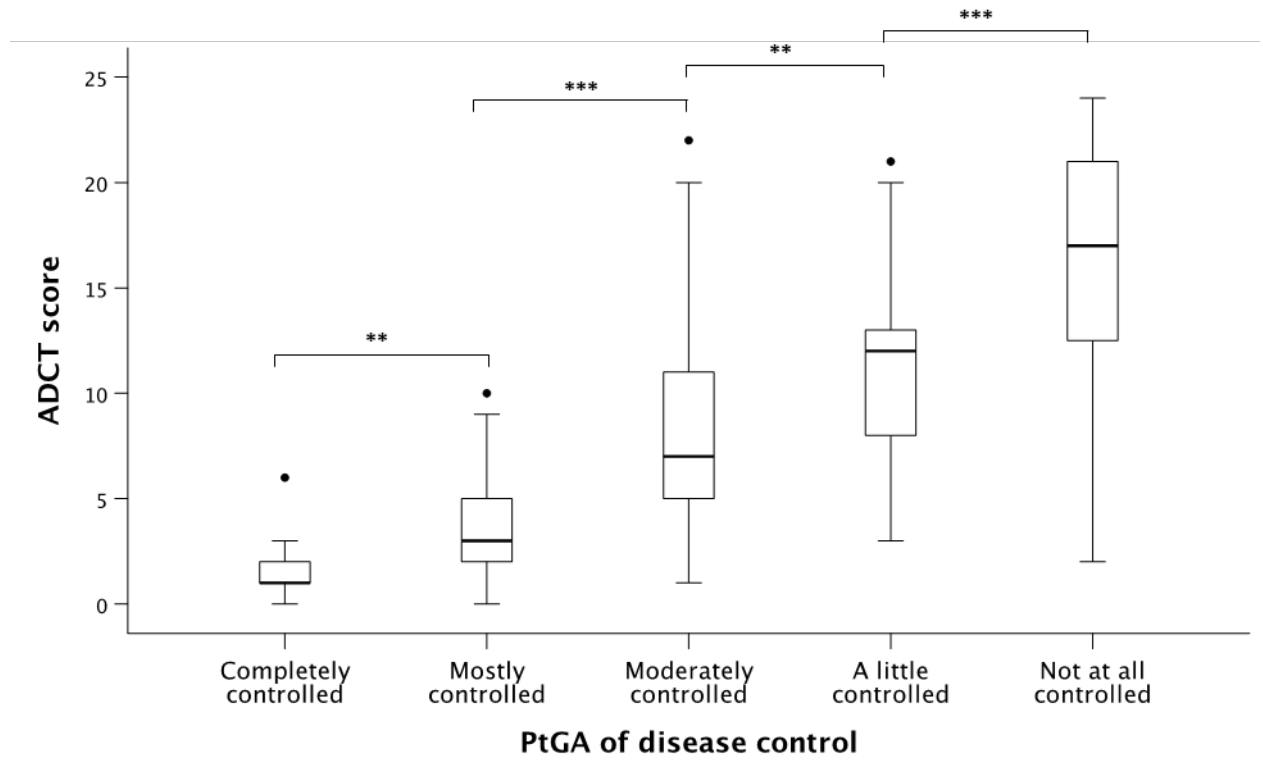


Figure S2. Distribution of ADCT total scores by PtGA of disease control. The bold line indicates the median ADCT scores, the box the interquartile range and error bars minimum and maximum values. PtGA, Patient-reported Global Assessment; ADCT, Atopic Dermatitis Control Tool. Mann-Whitney U test was used to compare median values of ADCT total score between groups. **p-value<0.01, ***p-value<0.001.

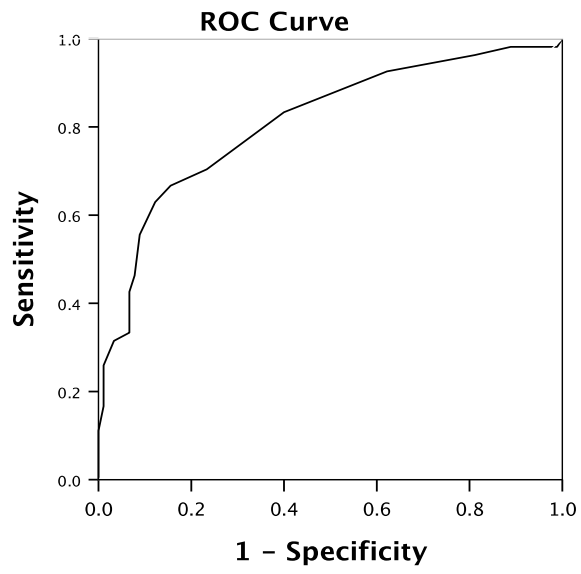
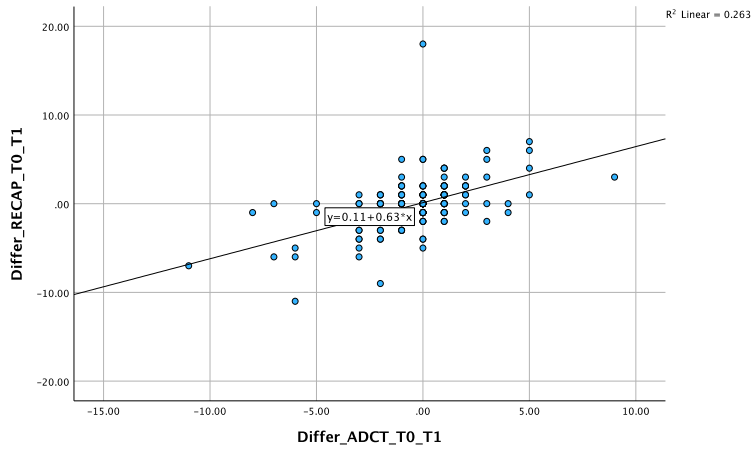
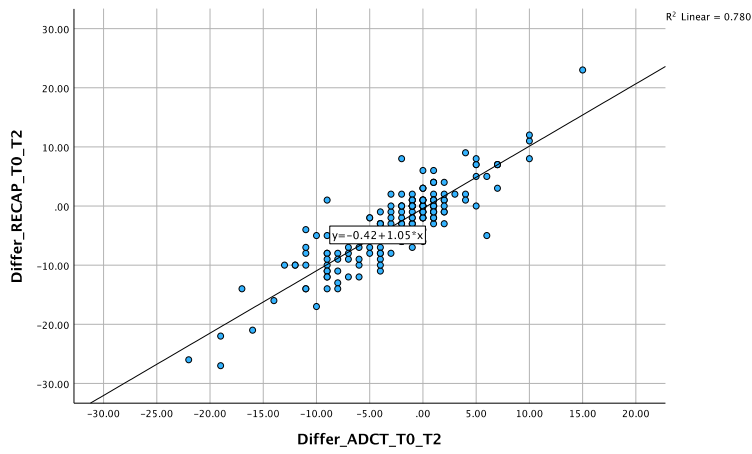


Figure S3. Receiver operating characteristics (ROC) Curve.

A.



B.



C.

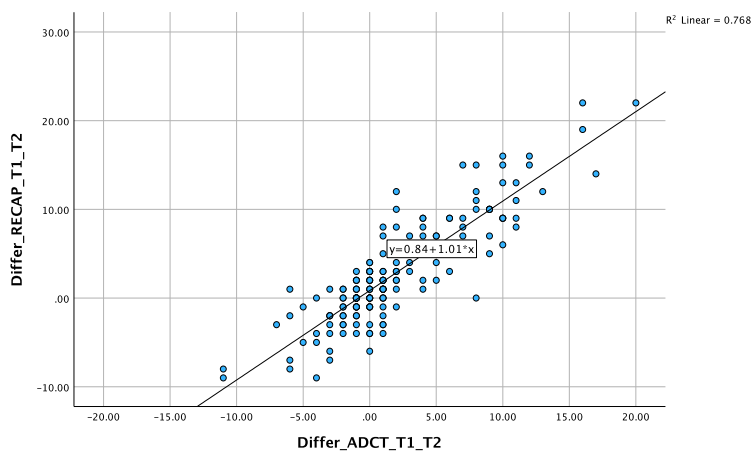
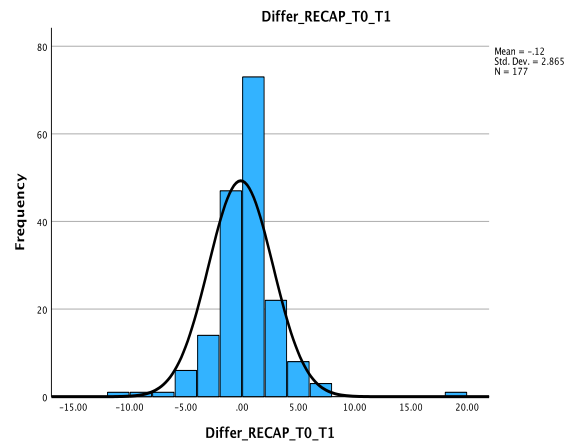
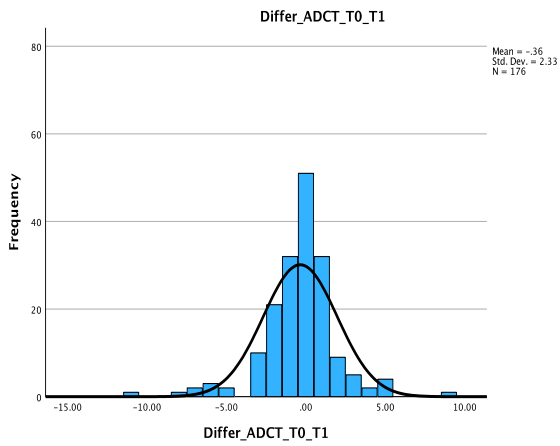
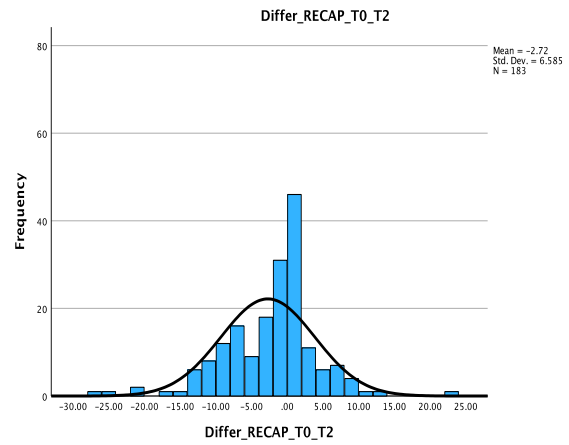
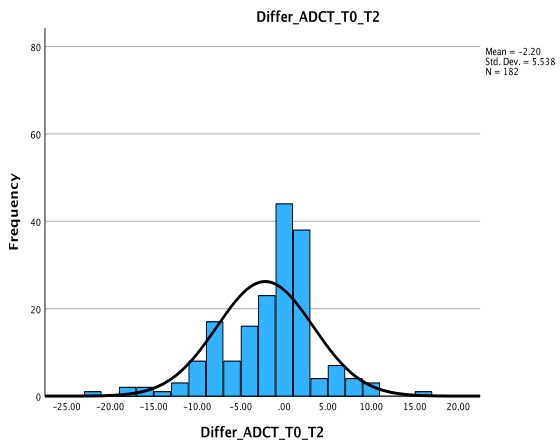


Figure S4. Correlations between the ADCT and RECAP on change scores. A. Between T_0 and T_1 ($n=176$); B. Between T_0 and T_2 ($n=181$); C. Between T_1 and T_2 ($n=173$). Abbreviation: differ, difference; ADCT, atopic dermatitis control tool; RECAP, Recap of atopic eczema.

A.



B.



C.

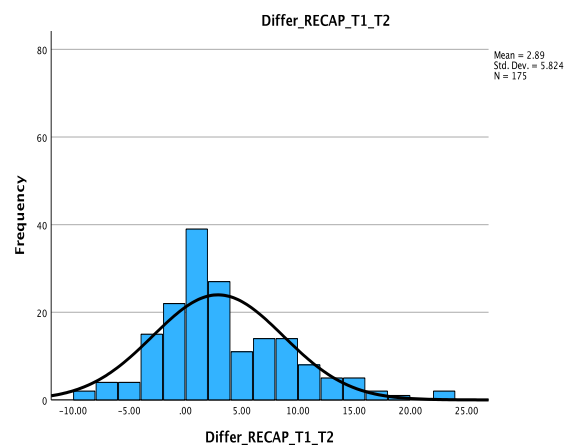
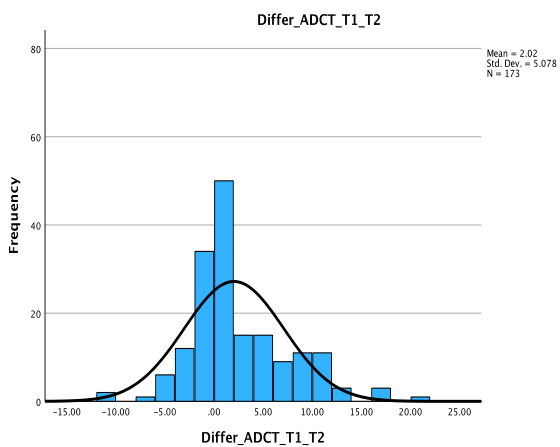


Figure S5. Frequency of change scores on the ADCT and RECAP. A. Between T_0 and T_1 ($n=176$); B. Between T_0 and T_2 ($n=181$); C. Between T_1 and T_2 ($n=173$). Abbreviation: differ, difference; ADCT, atopic dermatitis control tool; RECAP, Recap of atopic eczema.