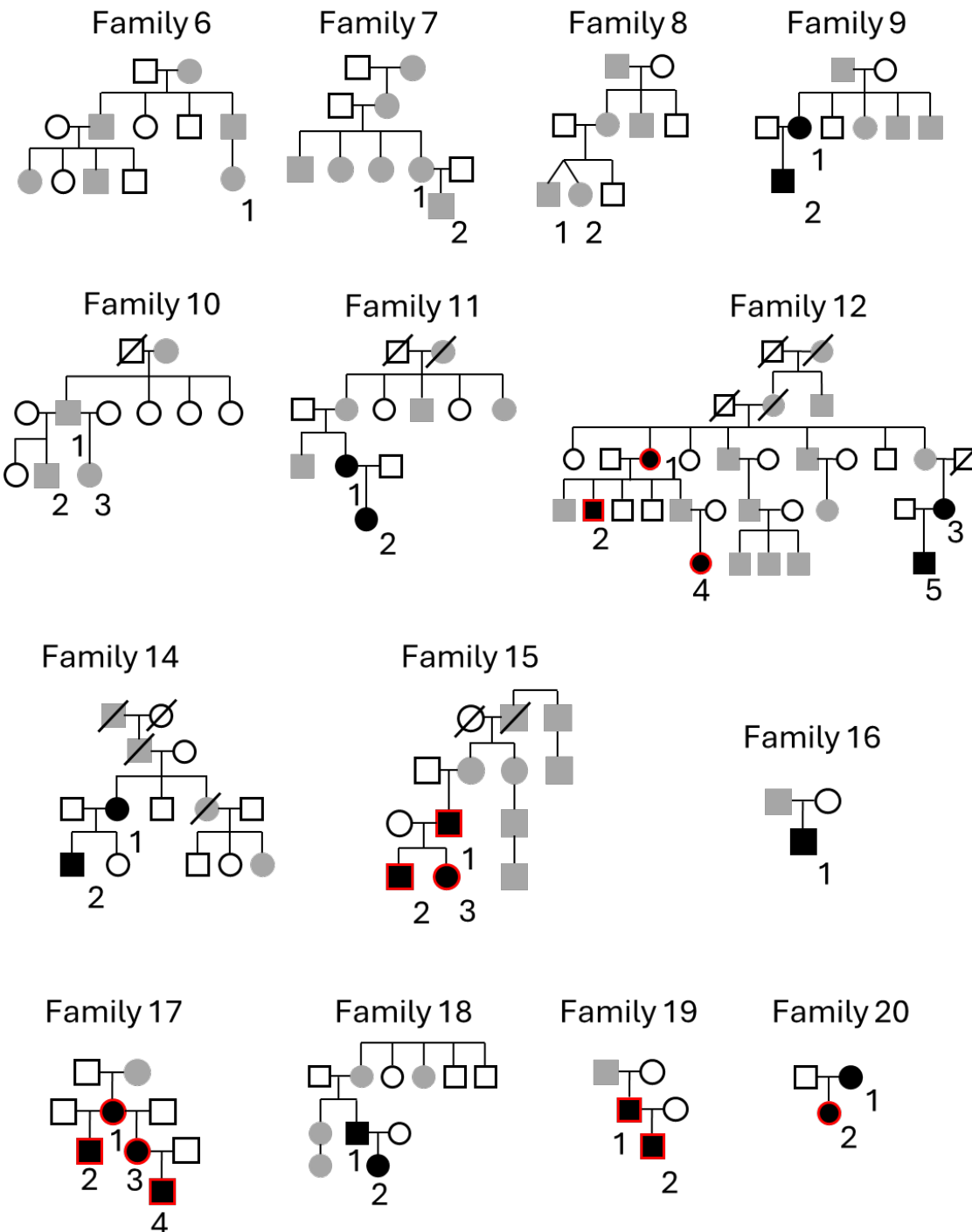


Supplementary material has been published as submitted. It has not been copyedited, or typeset by Acta Dermato-Venereologica

**Fig. S1. Pedigrees of families 6 to 20.** Unfilled symbols: unaffected individuals. Filled black symbols: affected individuals with only mottled pigmentation. Filled symbols with red border: affected individuals with both migratory circinate erythema and mottled pigmentation. Grey symbols: affected individuals with no data available regarding disease course. Patients with genetically confirmed *KRT5:c.1649del* variant are numbered.



**Fig. S2. Migratory circinate erythema at different ages.** A) Patient 20.2 at 2 months of age; B) Patient 20.2 at 2 years of age; C) Patient 20.2 at 4 years of age; D) Patient 19.2 at 3 years of age; E-F) Patient 17.4 at 3 years of age (back and front views).

