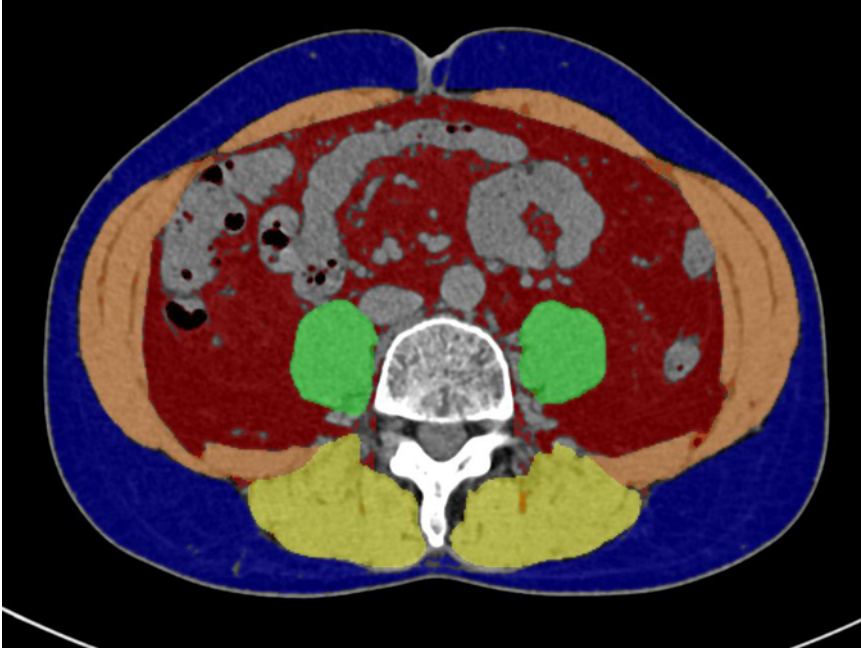


Supplementary material has been published as submitted. It has not been copyedited, or typeset by *Acta Dermato-Venereologica*

**APPENDIX S1 Body composition measurement using SYNAPSE VINCENT.**



Blue, subcutaneous adipose tissue; red, visceral adipose tissue; other, skeletal muscle.

## APPENDIX S2

This study was approved by the ethics committees of Nagoya University Hospital (approval number: 2022-0422) and was carried out under the Declaration of Helsinki. Patients were extracted based on diagnoses recorded in the Japanese Diagnosis Procedure Combination (DPC) database of Nagoya University Hospital from Jan. 2011 to Dec. 2023. 36 patients diagnosed with head and neck cutaneous angiosarcoma were enrolled. Deaths unrelated to angiosarcoma were excluded from the analysis. The following data were obtained: age, sex, height, weight, follow-up time outcome, ECOG performance status (PS), tumor size, lymph node status, distant metastasis, and treatment details. TNM staging was performed according to the Japanese Dermatological Association guidelines for angiosarcoma of the head and neck. The primary composite endpoint was event-free survival (EFS), defined as the time from the date of CT performed at the initial visit to death or transfer to best supportive care. Subcutaneous or visceral adipose tissue area at the level of the umbilicus, defined as having Hounsfield Unit values between  $-200$  and  $-50$ , was measured using SYNAPSE VINCENT software (FUJIFILM Corporation, Tokyo, Japan) according to the manufacturer's protocol. Skeletal muscle areas at the same slice were also measured by automatic extraction. These values were normalized for height in square meters ( $\text{cm}^2/\text{m}^2$ ), reported as adipose tissue index (ATI), subcutaneous ATI, visceral ATI, and skeletal muscle index (SMI). Body mass index (BMI) was calculated as  $\text{weight (kg)} / \text{height}^2 (\text{m}^2)$ . Univariate and multivariate analyses for EFS were performed using the Cox regression model. Because of the limited number of patients, multivariate analyses were performed for subcutaneous ATI, BMI, stage, and radiation therapy status. 95% confidence intervals and  $p$ -values were calculated using the Wald test. Survival curves were estimated by Kaplan–Meier methods and compared by the log-rank test. The cutoff subcutaneous ATI was defined as  $35 \text{ cm}^2/\text{m}^2$ . Statistical analyses were performed using JMP Student Edition 18 (JMP Statistical Discovery LLC, NC, USA) and were visualized by GraphPad Prism 9 (GraphPad Software, Boston, MA, USA).