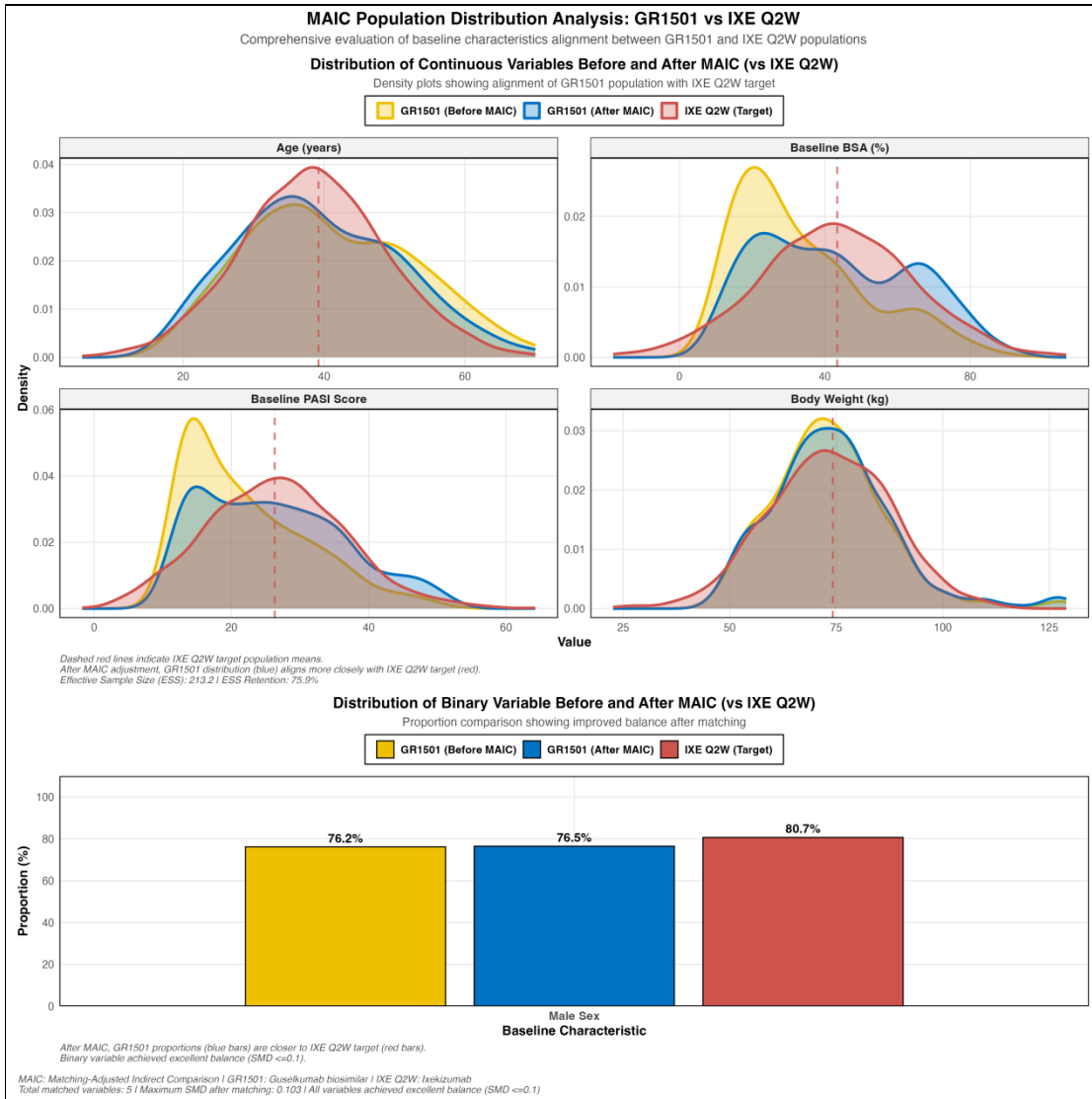


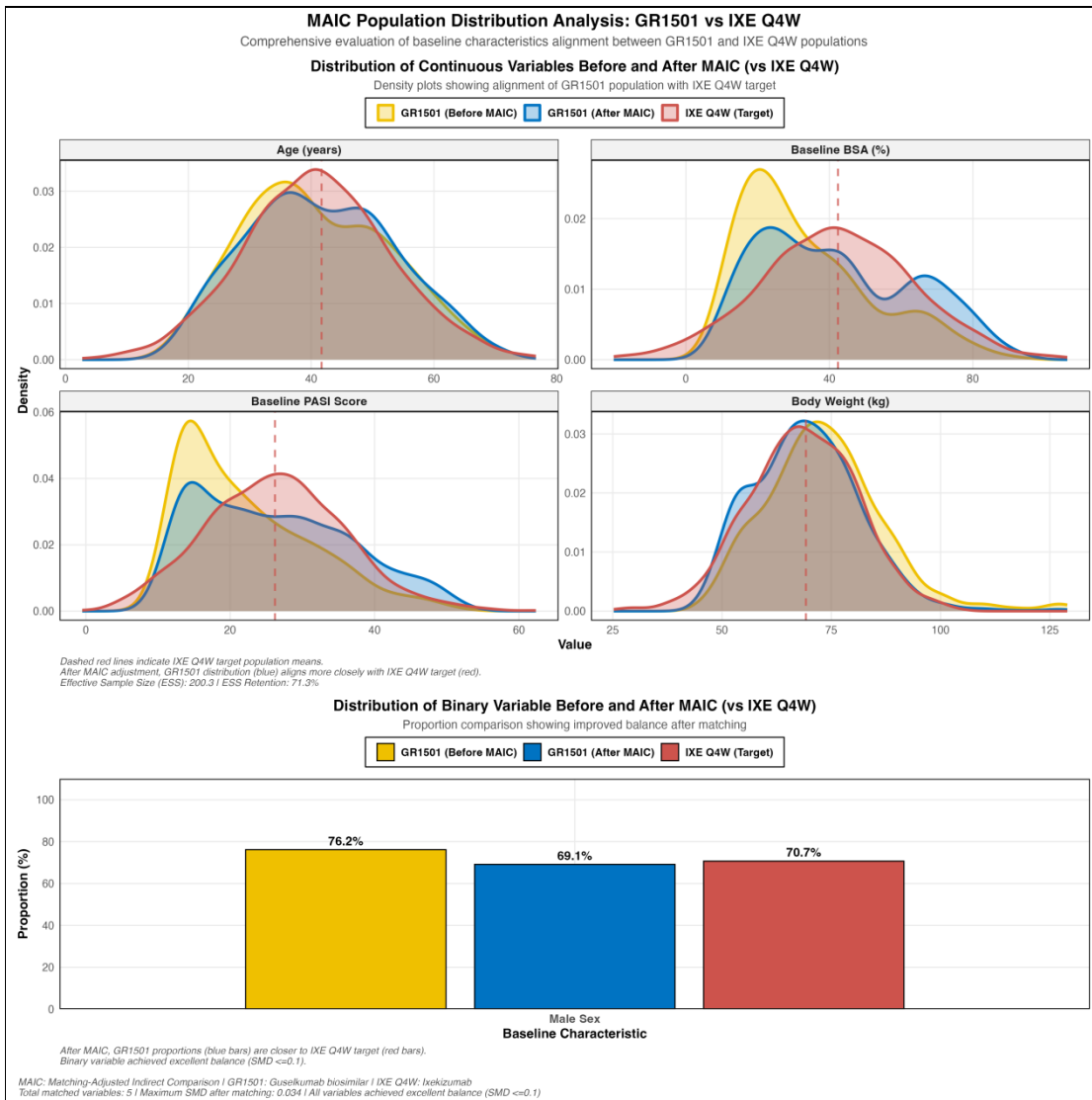
**Fig. S1. Covariate Balance Assessment: Xeligekimab versus Secukinumab**

Distribution density plots for continuous variables (age, baseline BSA, PASI score, body weight) and bar charts for categorical variables (sex, PASI >20, PGA=4) before and after MAIC weighting. Improved overlap demonstrates adequate balance achievement.



**Fig. S2. Covariate Balance Assessment: Xeligekimab versus Ixekizumab Q2W (Induction)**

Distribution density plots for continuous baseline characteristics (age, BSA, PASI score, body weight) and sex proportion before and after MAIC adjustment for the induction period comparison. Overlapping distributions indicate successful matching.



**Fig. S3. Covariate Balance Assessment: Xeligekimab versus Ixekizumab Q4W (Maintenance)**

Distribution density plots for continuous baseline characteristics (age, BSA, PASI score, body weight) and sex proportion before and after MAIC adjustment for the maintenance period comparison. Post-weighting distributions demonstrate adequate covariate balance.