

Fig. S1. (A) Placental growth factor (PIGF) and (B) vascular endothelial growth factor (VEGF)-A mRNA expression in lesional skin of cutaneous T-cell lymphoma (CTCL) classified with staging and normal skin. Values from individual patients were plotted as dots. * $p < 0.05$.

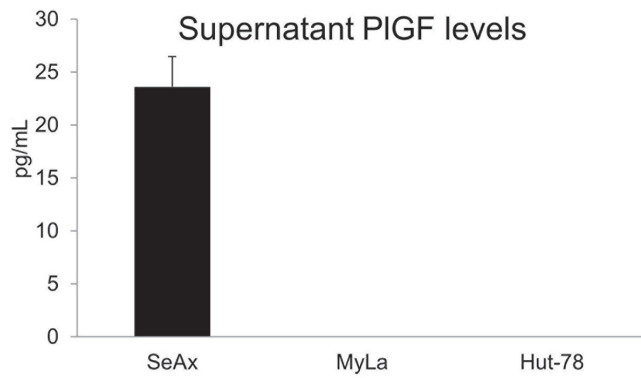


Fig S2. Placental growth factor (PIGF) expression by cutaneous T-cell lymphoma (CTCL) cell lines (SeAx, MyLA, and Hut-78). Values are means and standard deviation (SD) ($n=3$).

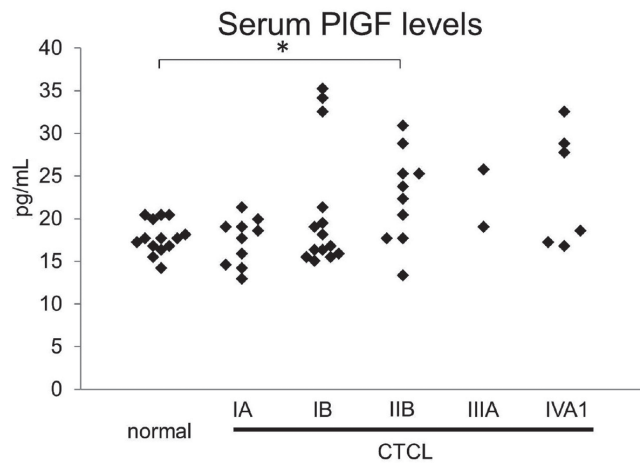


Fig. S3. Serum levels of placental growth factor (PIGF) in patients with cutaneous T-cell lymphoma (CTCL) classified with staging and normal skin. Values from individual patients were plotted as dots. * $p < 0.05$.

Table SI. Results of immunohistochemical analysis of placental growth factor (PIGF) and vascular endothelial growth factor-A (VEGF-A) in 28 patients with mycosis fungoides/Sézary syndrome (MF/SS)

Age, years	Sex	Diagnosis	Stage	PIGF			VEGF-A	
				KC	EC	TC	EC	TC
61	M	Patch MF	IA	±	+	-	±	-
56	M	Patch MF	IA	±	-	±	±	±
70	M	Patch MF	IB	±	±	-	+	-
38	M	Patch MF	IA	+	±	±	+	±
52	M	Patch MF	IA	+	-	±	+	±
59	F	Patch MF	IB	-	±	-	+	±
62	M	Plaque MF	IB	+	±	-	±	+
64	M	Plaque MF	IA	+	-	-	±	+
65	F	Plaque MF	IB	±	±	-	±	+
64	M	Plaque MF	IA	-	-	-	+	±
31	F	Plaque MF	IA	+	-	±	+	+
27	F	Plaque MF	IB	+	+	±	+	±
50	F	Plaque MF	IB	+	+	±	+	±
74	M	Plaque MF	IB	++	±	±	+	±
62	M	Plaque MF	IB	++	+	+	+	++
57	M	Tumour MF	IIB	+	+	±	+	±
45	M	Tumour MF	IIB	+	±	-	+	±
61	M	Tumour MF	IIB	+	±	±	+	±
38	F	Tumour MF	IIB	±	+	+	+	+
40	M	Tumour MF	IIB	+	+	±	+	+
40	M	Erythrodermic MF	IIIA	±	+	+	+	+
30	F	Erythrodermic MF	IIIA	++	+	±	+	+
52	M	SS	IIV1	±	-	-	+	±
58	F	SS	IIV1	+	±	-	+	±
64	F	SS	IIV1	±	±	±	+	++
42	M	SS	IIV1	+	+	±	+	+
42	F	SS	IIV1	±	±	-	+	±
67	M	SS	IIV1	+	+	+	±	+

KC: keratinocytes; EC: endothelial cells; TC: tumour cells; MF: mycosis fungoides; SS: Sézary syndrome. The following grading system was used for keratinocytes and endothelial cells: - negative; ± slight staining; + moderate staining; ++ strong staining. For tumour cells, we used the following grading system: - negative; ± > 0-25% of tumour cells stained; + > 25-50% tumour cells stained; ++ > 50% tumour cells stained.