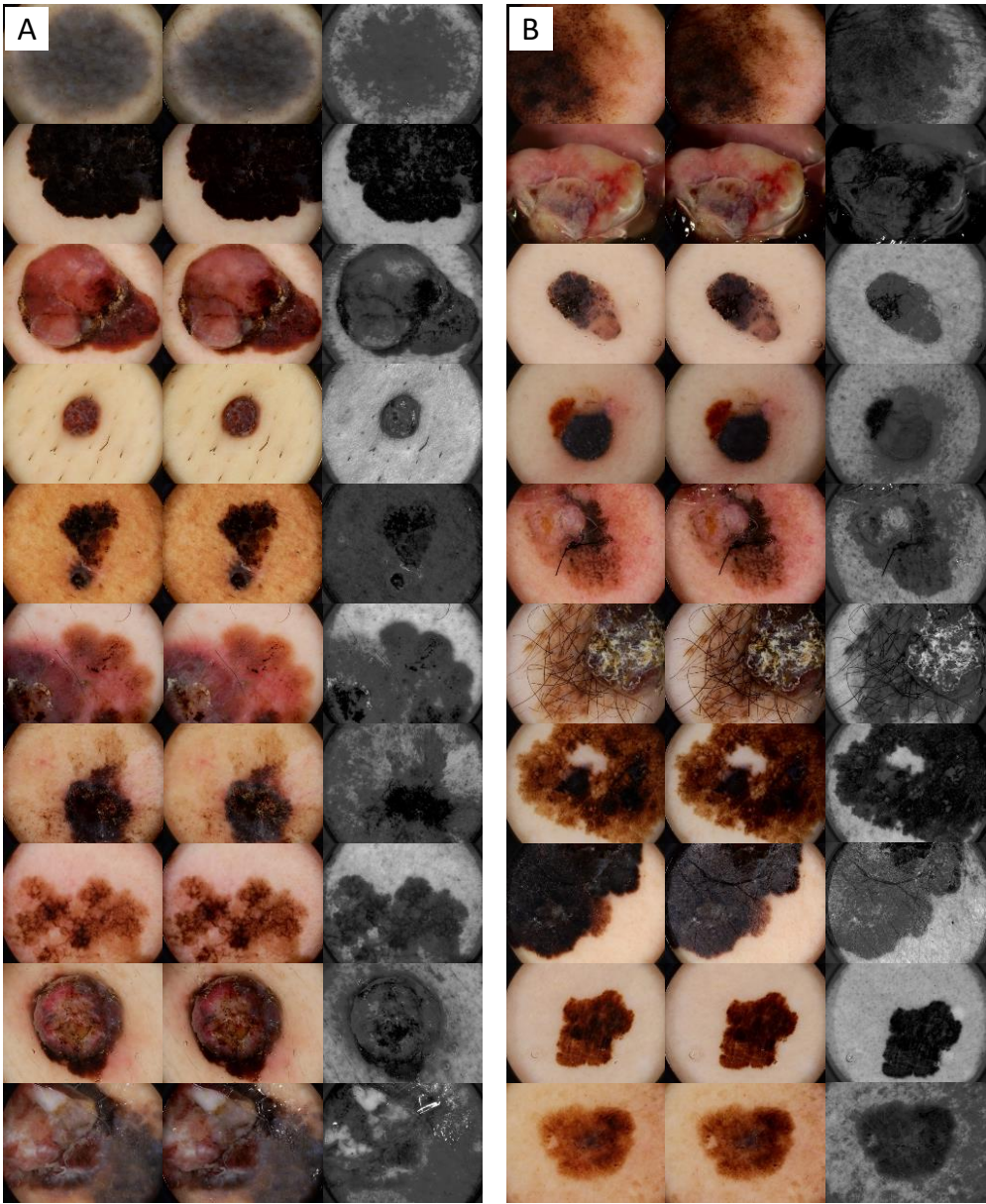
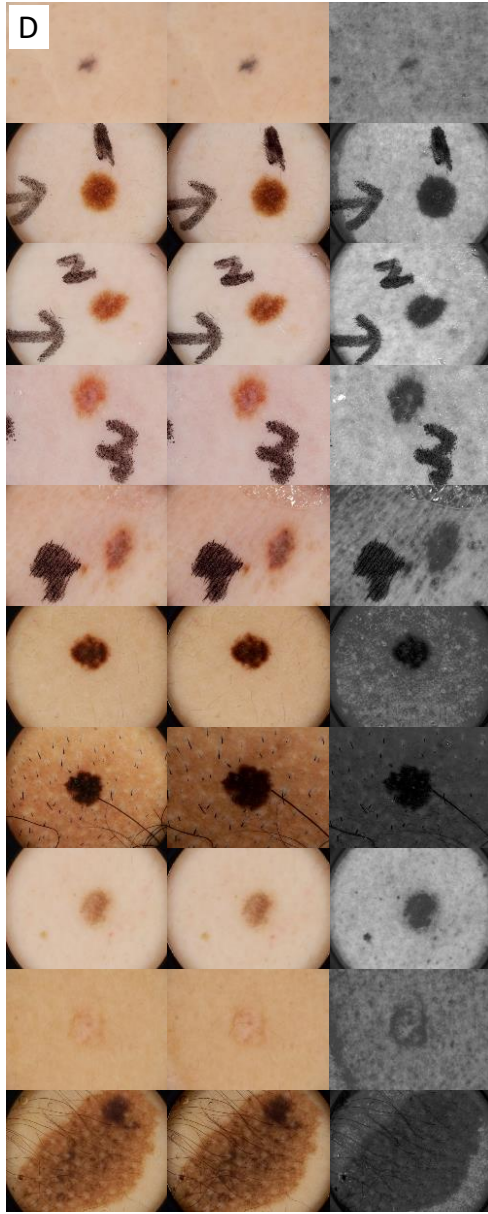
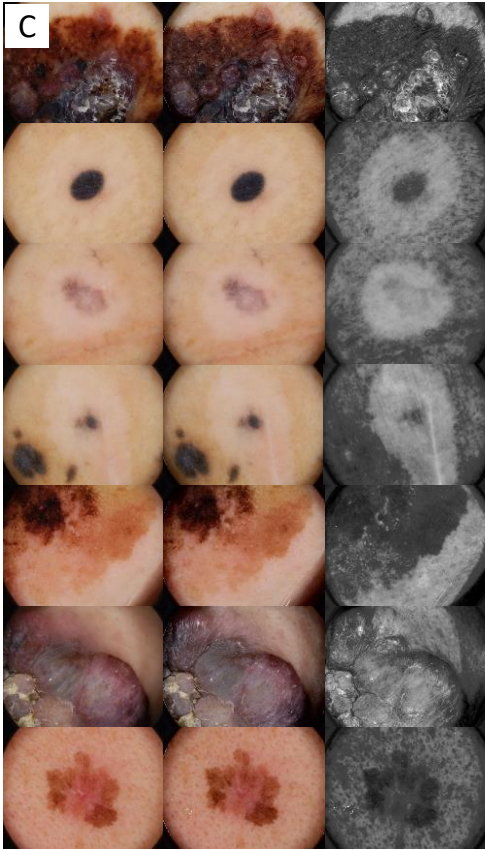
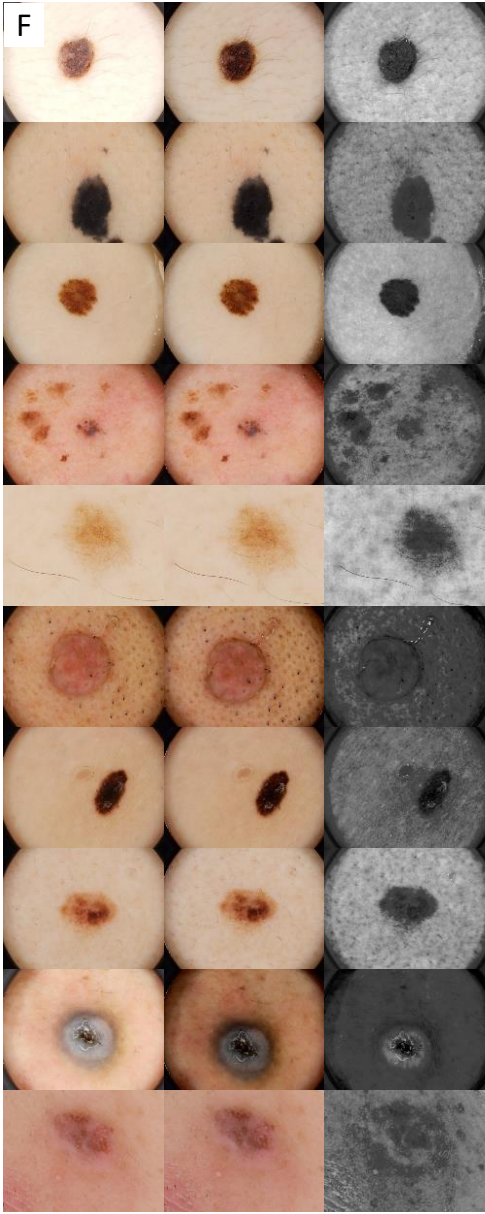
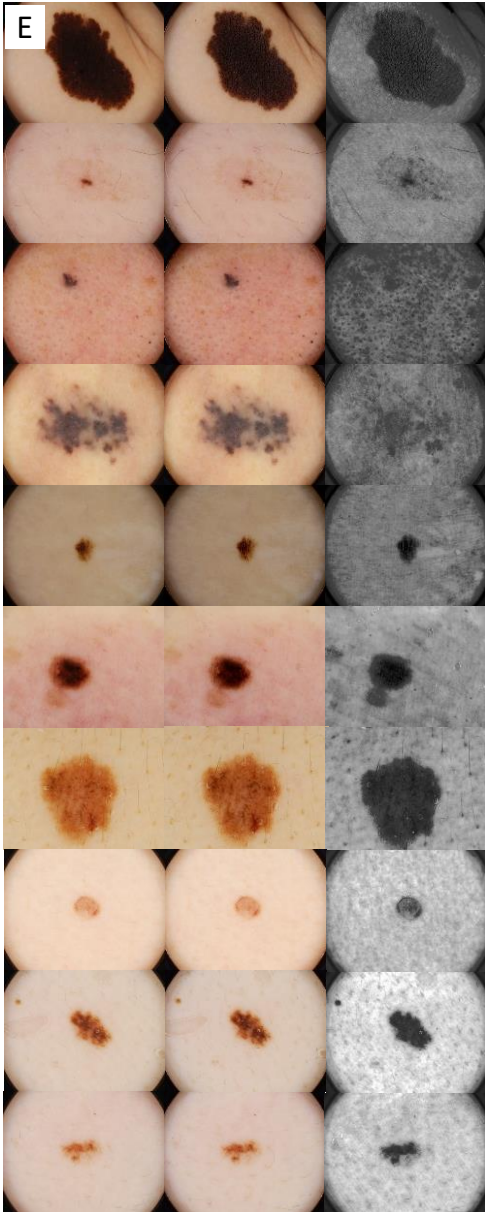
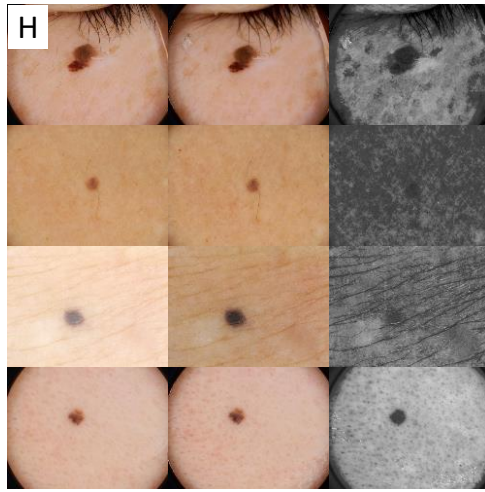
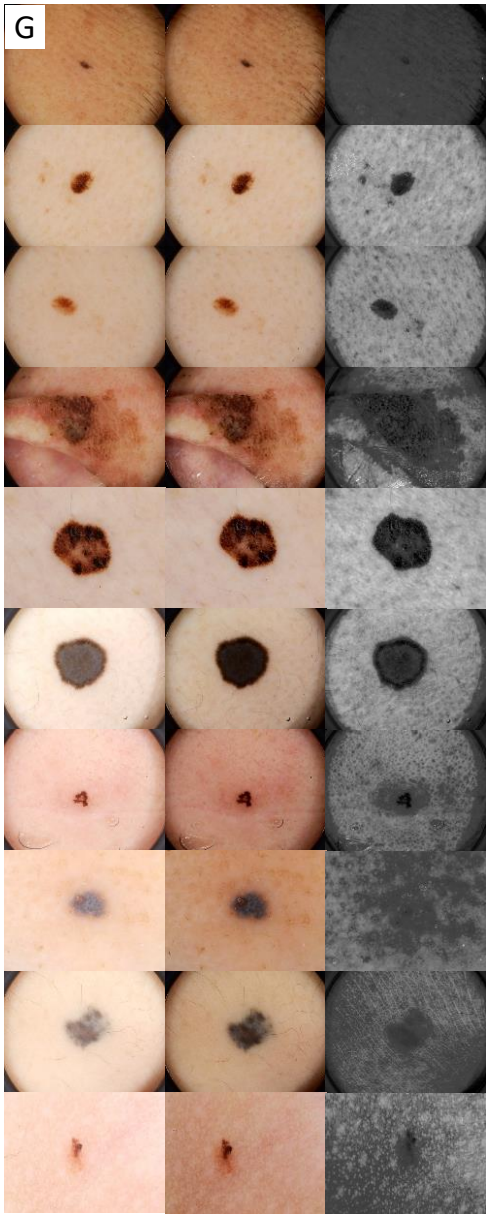


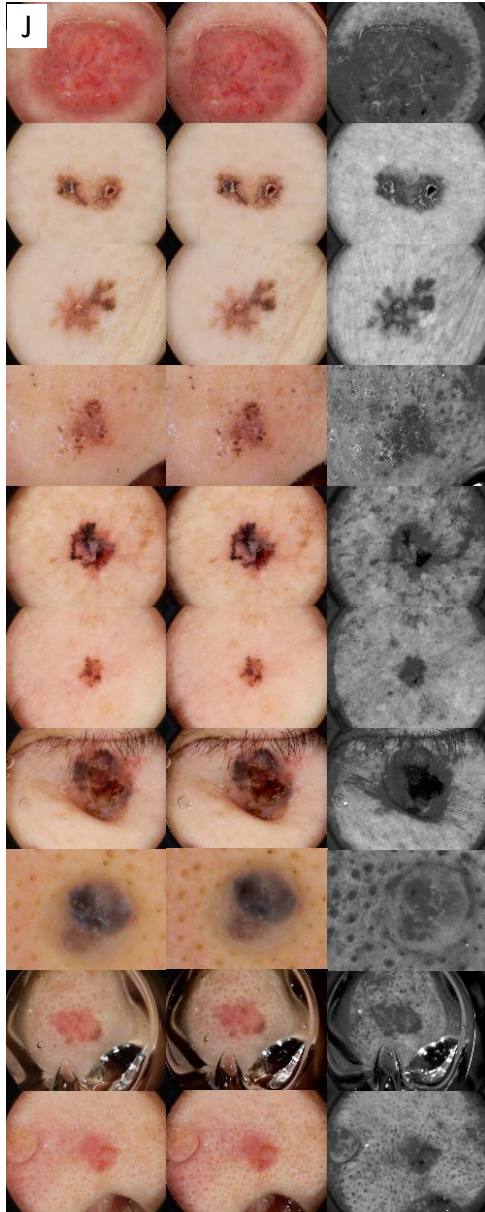
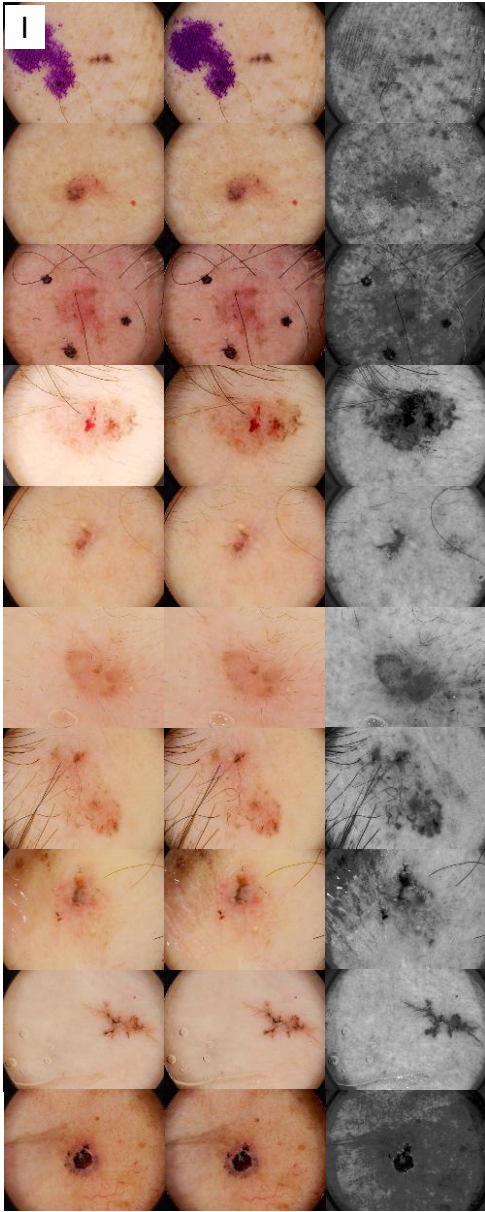
APPENDIX S1

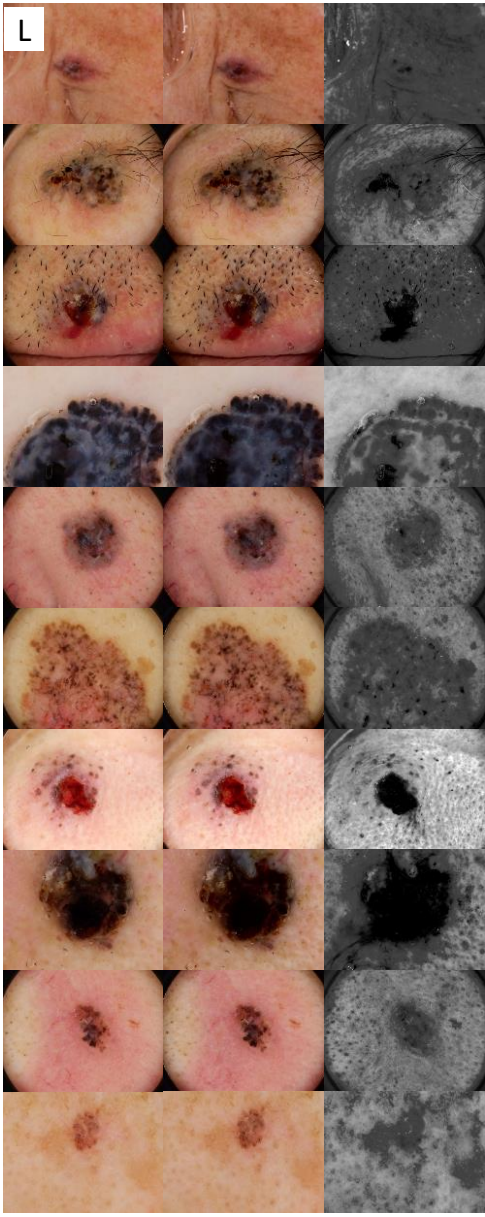
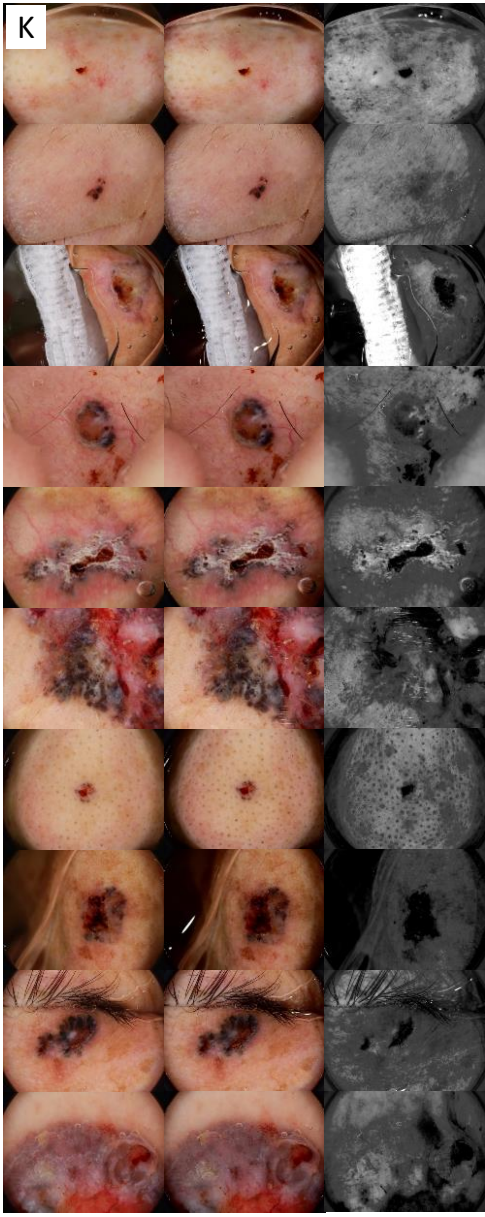


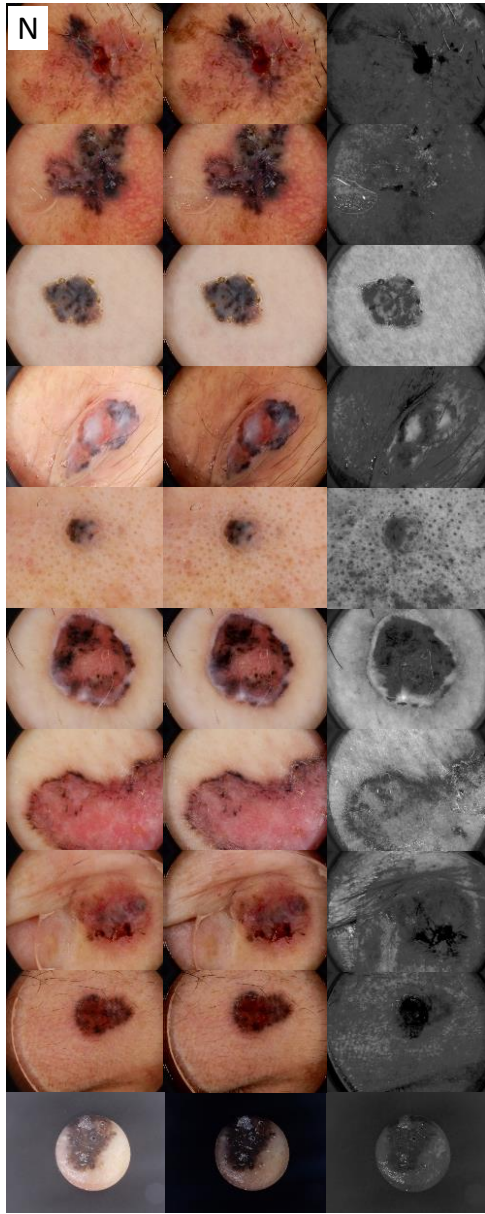
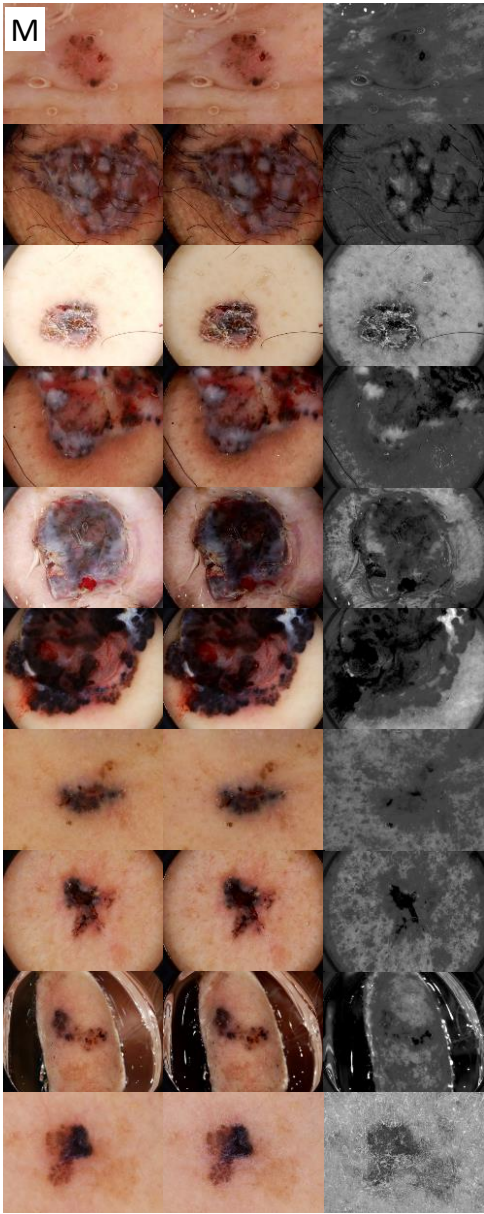


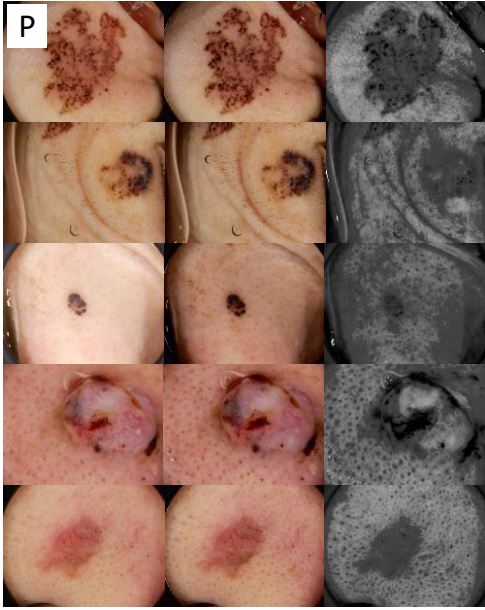
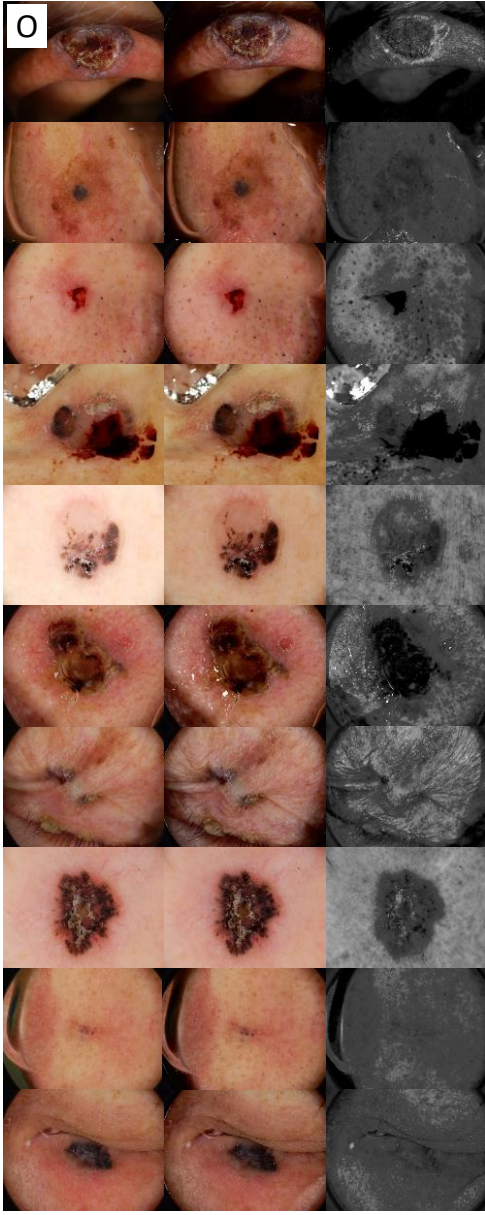


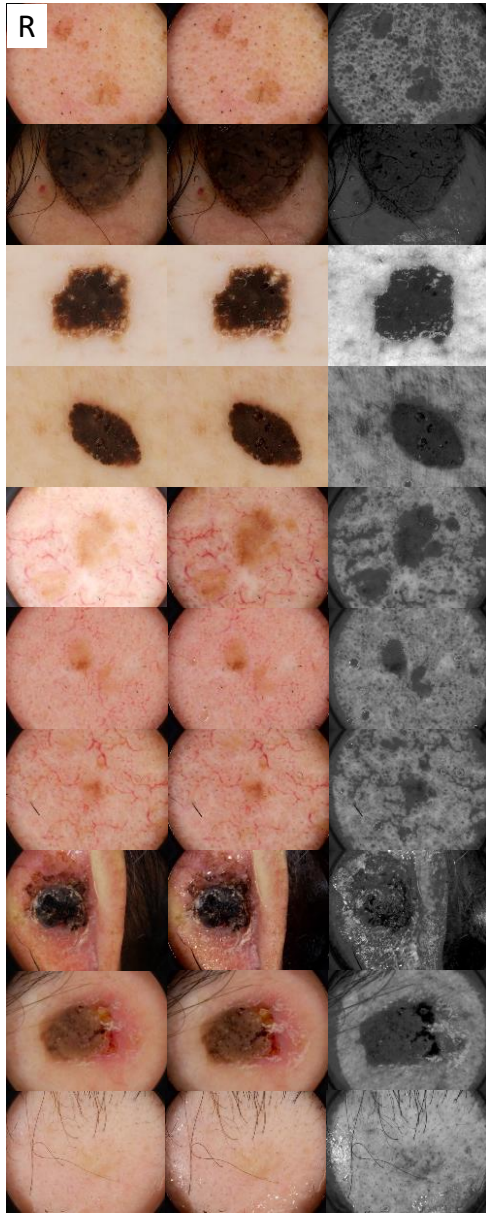
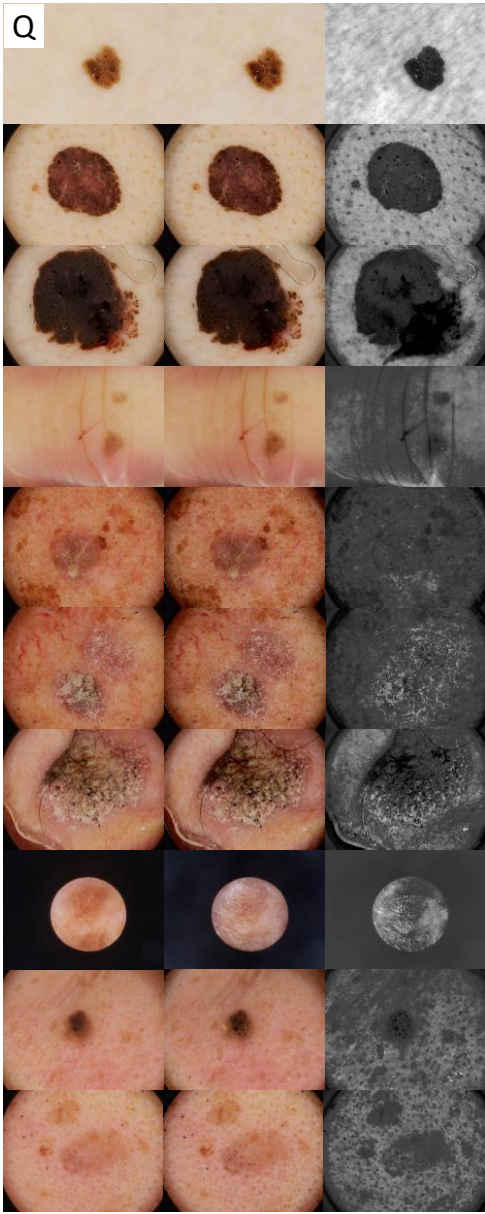


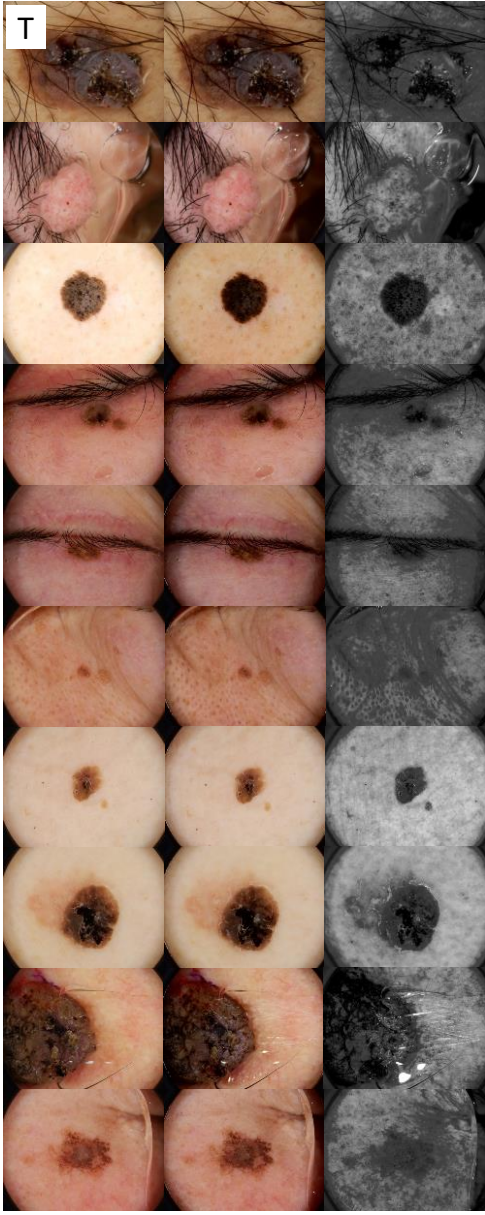
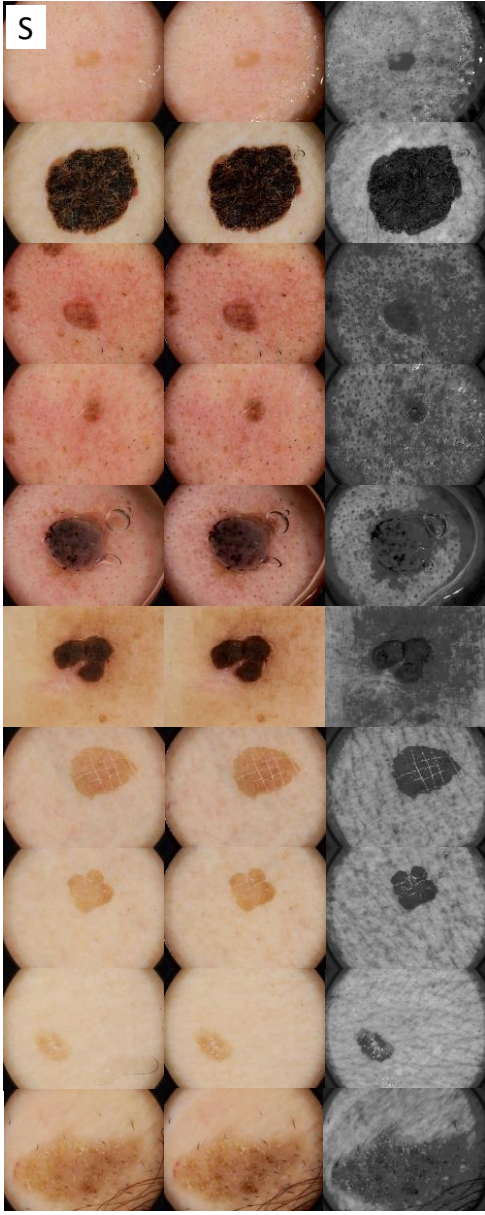












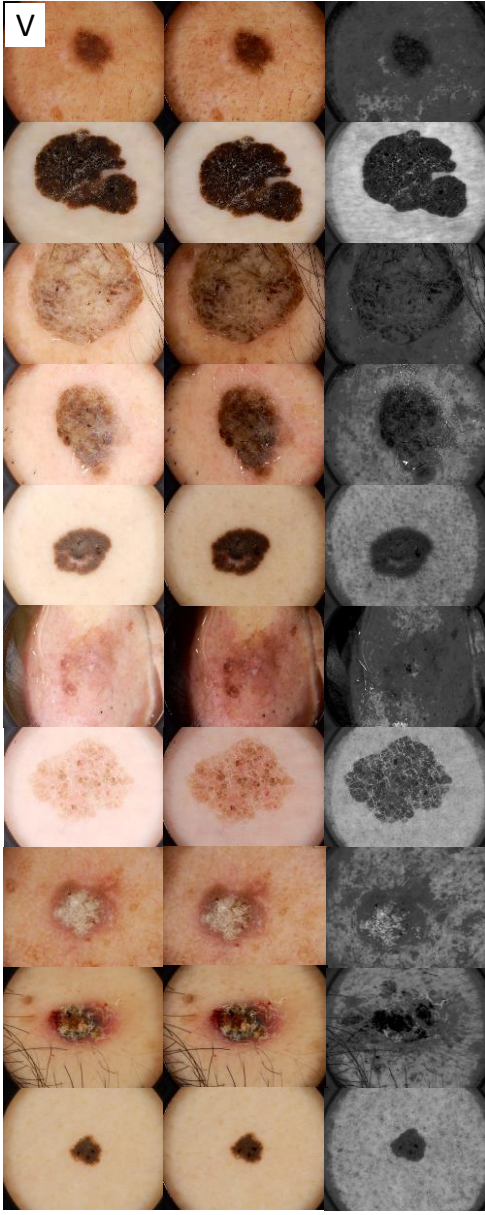
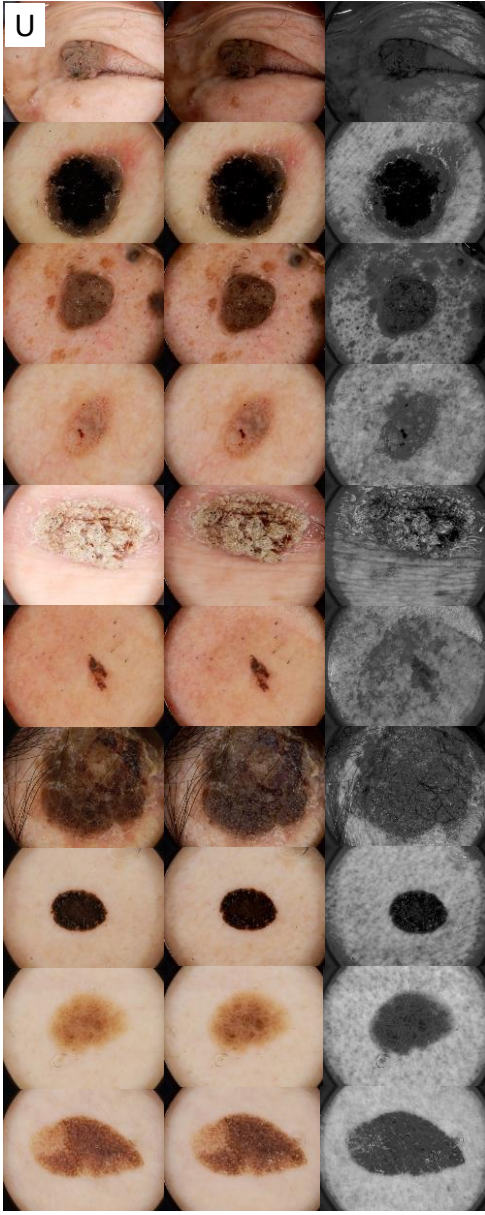




Figure S1. Dermoscopic images of 207 lesions in the present study.

A-C, 27 malignant melanoma lesions. D-H, 44 melanocytic nevus lesions. I-P, 75 basal cell carcinoma lesions. Q-W, 61 seborrheic keratosis lesions. The 3 images in each row were obtained simultaneously from the same lesion on polarized (left), non-polarized (middle), and near-ultraviolet (right) dermoscopy, respectively.