

Fig. S1 Histopathologic features of representative cases of hypopigmented mycosis fungoides.

a. Group I: small group of mononuclear cells in the basal layer; mild lymphocytes perivascular infiltration in superficial dermis (H&E, 10×).

b. Group II : mild acanthosis, more band-like mononuclear cells infiltration in basal layer and spinous layer within the epidermis forming Pautrier's microabscesses; more lymphocytes perivascular infiltration in superficial and middle dermis (H&E, 10×).

c. Group III: apparent acanthosis, intense mononuclear cells infiltration in basal layer and spinous layer within the epidermis forming Pautrier's microabscesses; numerous lymphocytes infiltration in superficial and middle dermis (H&E, 10×).

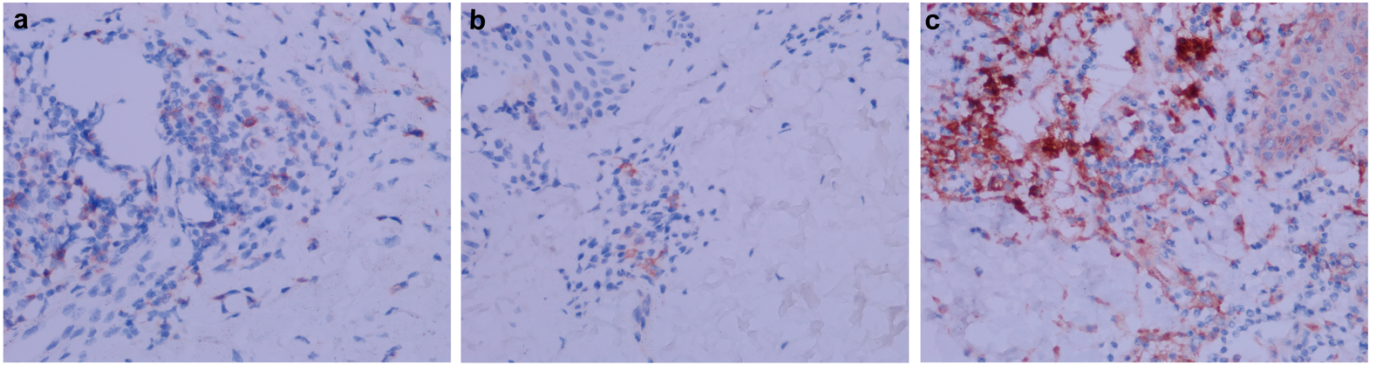


Fig. S2 Representative immunohistochemistry staining images of hypopigmented mycosis fungoides patients with rare-scattered (+) and numerous (++) programmed death-1 (PD1) /programmed cell death-ligand 1 (PD-L1) intensity. a. rare-scattered (+) expression of PD1 (100×); b. rare-scattered (+) expression of PD-L1 (100×); c. numerous (++) expression of PD-L1 (100×)