

Fig. S1. Study population and overview of core study outcomes. *N: number of patients; n: number of tumours. **No tumours were recruited for patients with at least one tumour that violated study criteria.

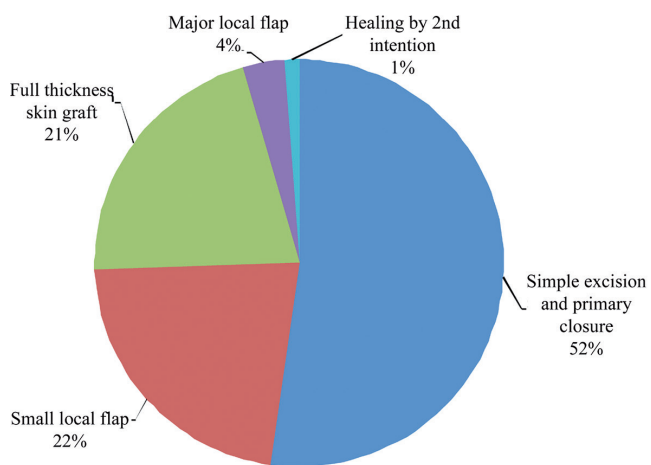


Fig. S2. Distribution (%) of surgery modalities jointly consented by 2 evaluators for the treatment of recruited tumours. "Healing by 2nd intention" denotes tumour excision followed by healing by second intention.



Fig. S3. The stages of immunocryosurgery (the same tumours as in Fig. 1, in text). Panels A–E: 12-mm diameter tumour (65-year-old male). Panels F–J: 2 tumours, 7-mm (nose) and 10-mm (nasolabial fold) diameter (74-year-old female). Panels K–O: 13-mm diameter tumours (82-year-old female). Panels A, F, K: baseline; Panels B, G, L: day 14 (prior to cryosurgery); Panels C, H, M: day 35 (end of treatment); Panels D, I, N: 1-month follow-up; Panels E, J, O: 12-month follow-up.