

Fig. S1. Light brown nests: a comparison between different magnifications. 20-fold magnified images of basal cell carcinomas (BCCs) with light brown nests (a, c, e, g, i, m). 50-fold (b, d, h, l) or 70-fold (f, l) magnified images of the same BCCs where light brown nests are more clearly visible. Homogeneous light brown nests are indicated by white arrows, whereas structured ones are shown by black arrows.

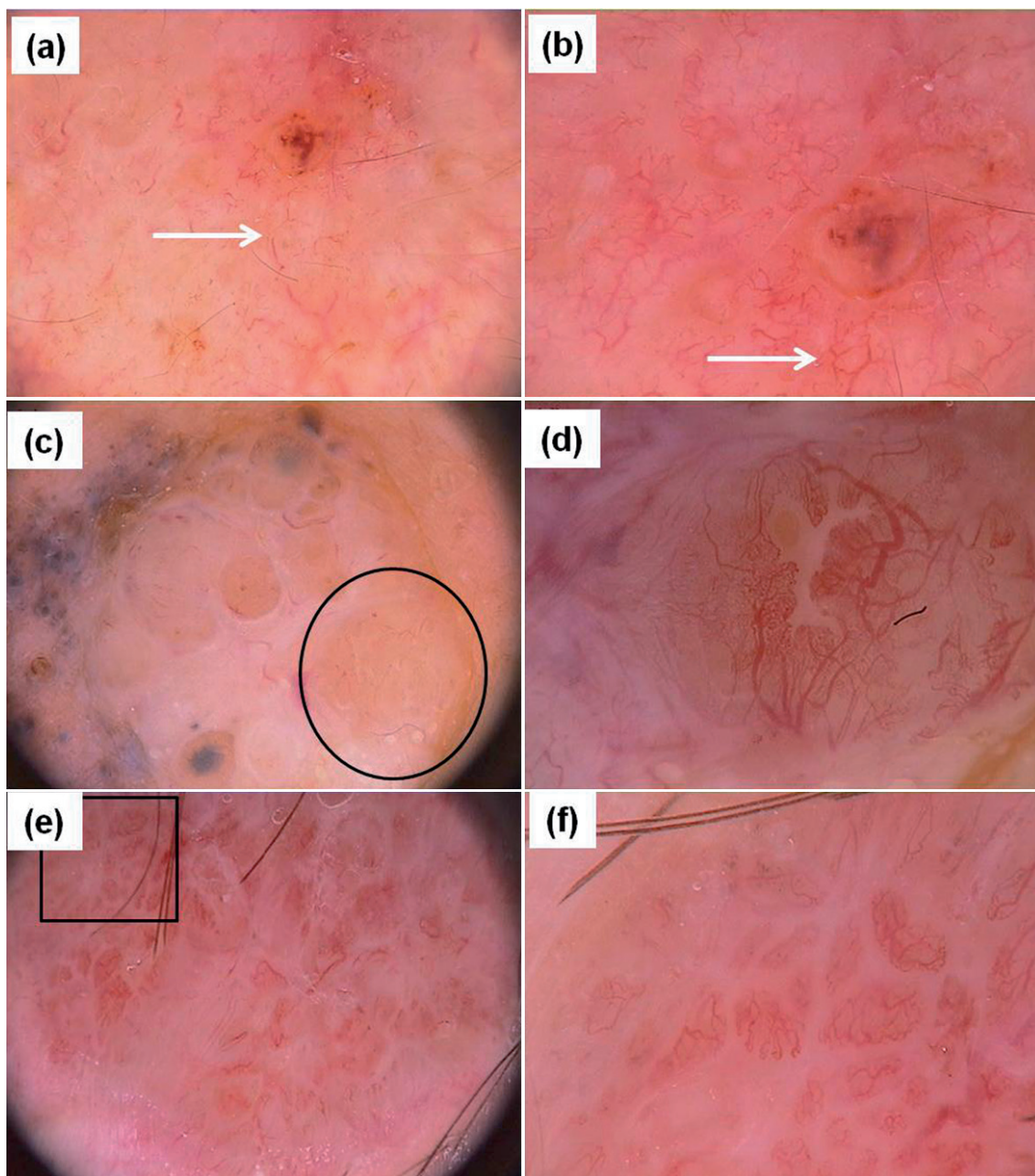


Fig. S2. Arborising and hairpin vessels in basal cell carcinoma visible at a 50–70-fold magnification. 30-fold magnification (a); 20 fold magnification (c, e); 70 fold magnification (b, d, f).

Table SI. Frequency of dermoscopic features of basal cell carcinoma according to demographic data

	<60 years (n=166) %	>61 years (n=234) %	Male (n=207) %	Female (n=193) %	Head/neck (n=152) %	Trunk (n=189) %	Limbs (n=59) %
Arborising vessels	66.27	65.38	75.36	55.44 ^b <i>p</i> =0.000	72.36	66.18	47.45 ^c <i>p</i> =0.001
Short fine telangiectasia	50.60	46.58	43.96	55.44 ^b <i>p</i> =0.028	30.92	60.31 ^c <i>p</i> =0.000	62.71 ^c <i>p</i> =0.000
Shiny white to red areas	38.53	44.07	47.33	35.75 ^b <i>p</i> =0.025	26.99	51.32 ^c <i>p</i> =0.000	49.16 ^c <i>p</i> =0.004
Multiple blue-gray globules	35.55	38.03	38.16	36.78	41.44	38.65	20.33 ^{c,d} <i>p</i> =0.007 <i>p</i> =0.015
Multiple small erosions	25.33	30.79	23.46	31.6	21.71	36.5	25.42
Large blue-gray ovoid nests	28.31	30.76	33.34	25.91	42.16	22.7 ^c <i>p</i> =0.000	15.25 ^c <i>p</i> =0.000
Ulceration	20.48	36.36 ^a <i>p</i> =0.000	37.69	21.24 ^b <i>p</i> =0.000	38.88	23.85 ^c <i>p</i> =0.004	25.44
Maple leaf-like areas	16.26	16.66	15.45	21.76	17.11	22.75	3.38 ^d <i>p</i> =0.001
Spoke wheel areas	4.23	9.41	6.77	8.29	0.05	8.48 ^c <i>p</i> =0.002	6.77 ^c <i>p</i> =0.025
Concentric structures	13.85	4.7 ^a <i>p</i> =0.002	8.69	5.12	9.86	6.34	1.61
Dots	54.40	45.92	45.89	55.68	46.05	55.02	44.06
Light brown nests	39.89	40.77	41.54	40.71	46.05	38.62	33.89
Homogeneous nests	14.45	20.08	17.39	18.13	22.36	15.87	11.86
Structured nests	33.13	32.47	32.36	33.16	34.21	32.27	30.5

Significant with respect to ^a<60; ^bmale subjects; ^chead/neck; ^dtrunk.