

Supplementary material has been published as submitted. It has not been copyedited, typeset or checked for scientific content by Acta Dermato-Venereologica

Fig. S1. IL-31 expression (green) was not detected on 2D7⁺ basophils, AAI⁺ mast cells, MBP⁺ eosinophils, and CD68⁺ macrophages (green) in itchy porokeratosis. Blue indicates nuclei.

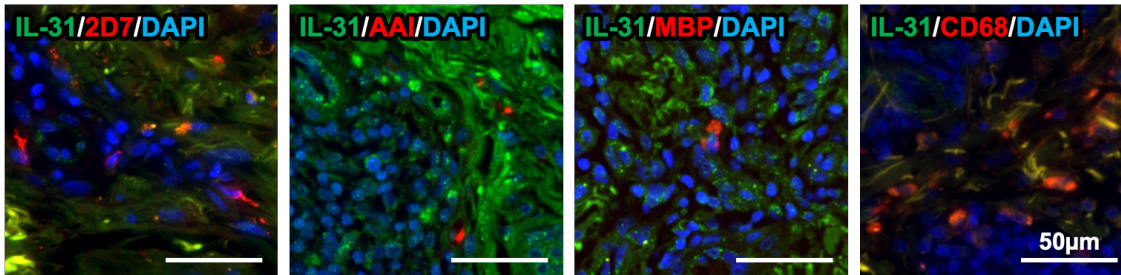


Fig. S2. Representative double staining images of TSLP (green), periostin (green), and eotaxin-3 (green) with CD3⁺ T cells (red) in itchy porokeratosis. Blue indicates nuclei. White dotted lines indicate the dermo-epidermal junctions.

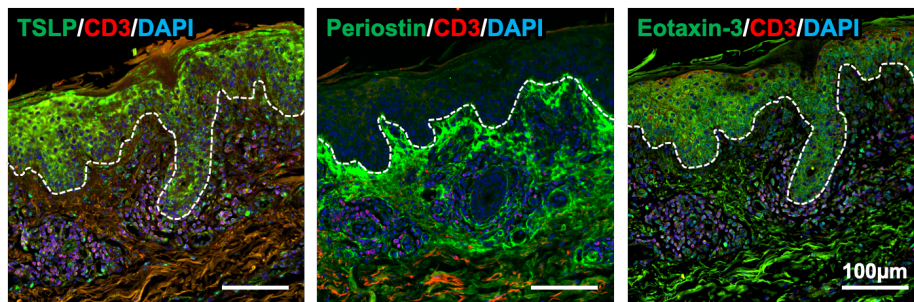


Fig. S3. 2D7⁺ basophils (red) express IL-31RA (green) in itchy porokeratosis. Blue indicates nuclei.

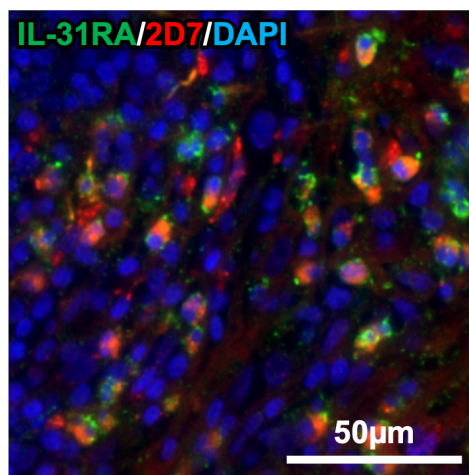


Fig. S4. Infiltration of 2D7⁺ basophils (red) in the dermis and epidermis of itchy porokeratosis. The epidermis expresses eotaxin-3 (green). Blue indicates nuclei. White dotted lines indicate the dermo-epidermal junctions.

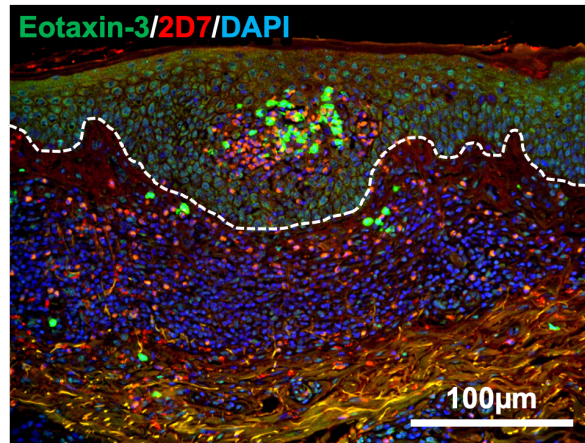


Fig. S5. Infiltrating 2D7⁺ basophils (red) in the dermis express a basophil activation marker CD203c (green) both on the cell surface and cytoplasm in itchy porokeratosis. Blue indicates nuclei.

