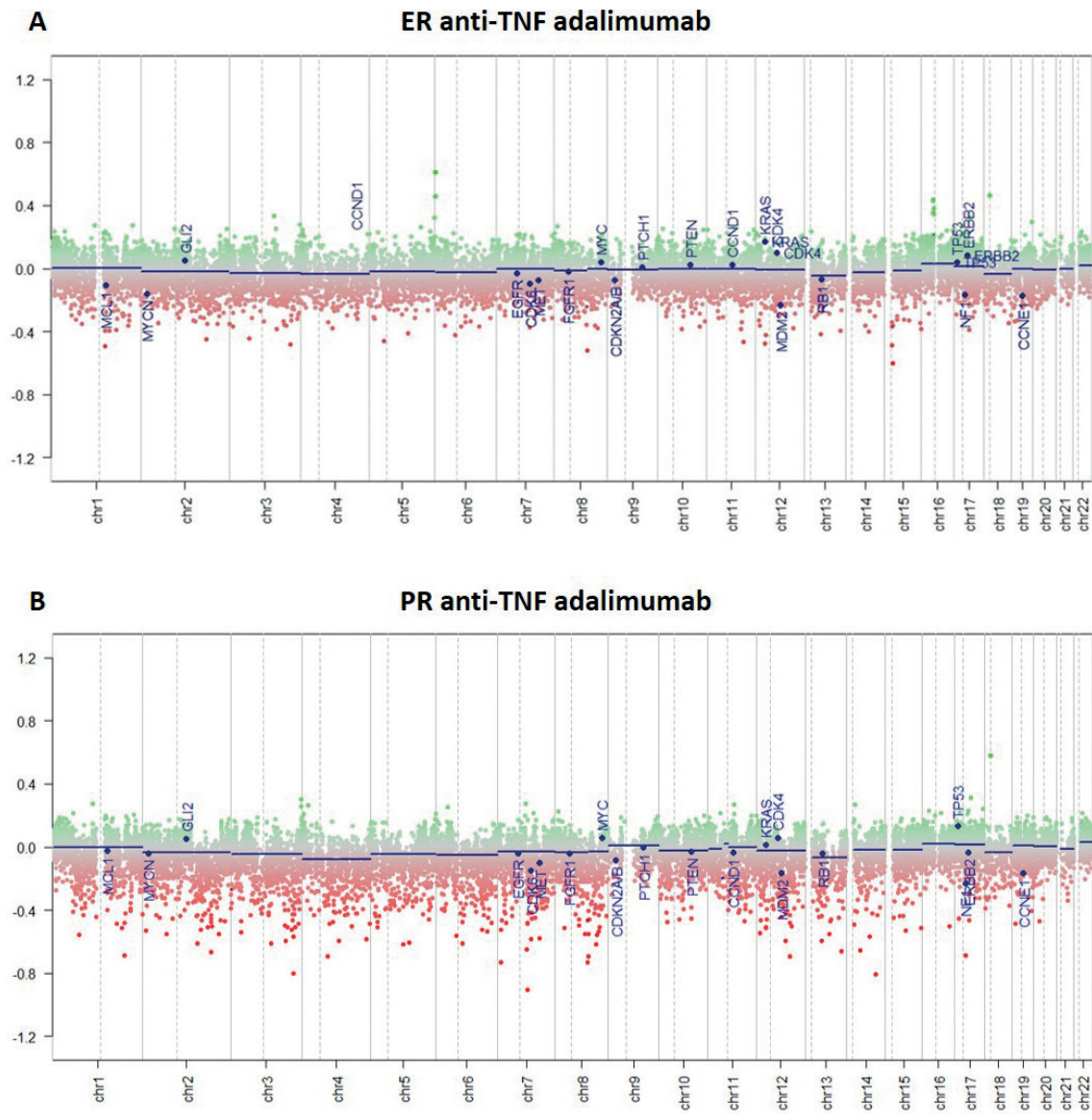
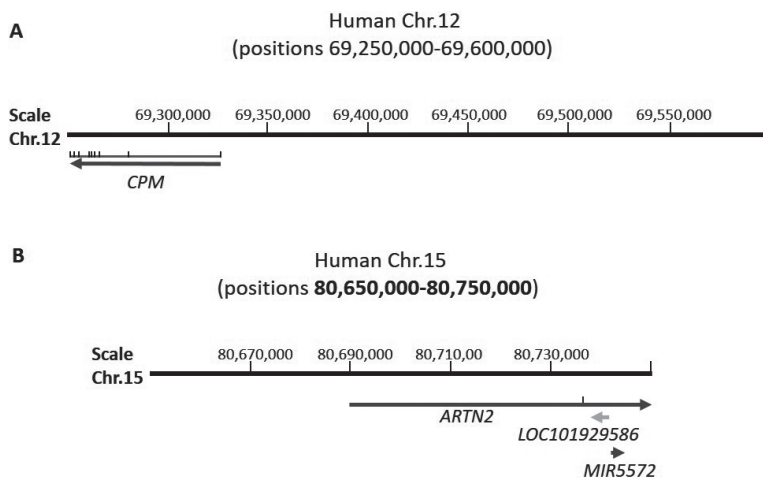


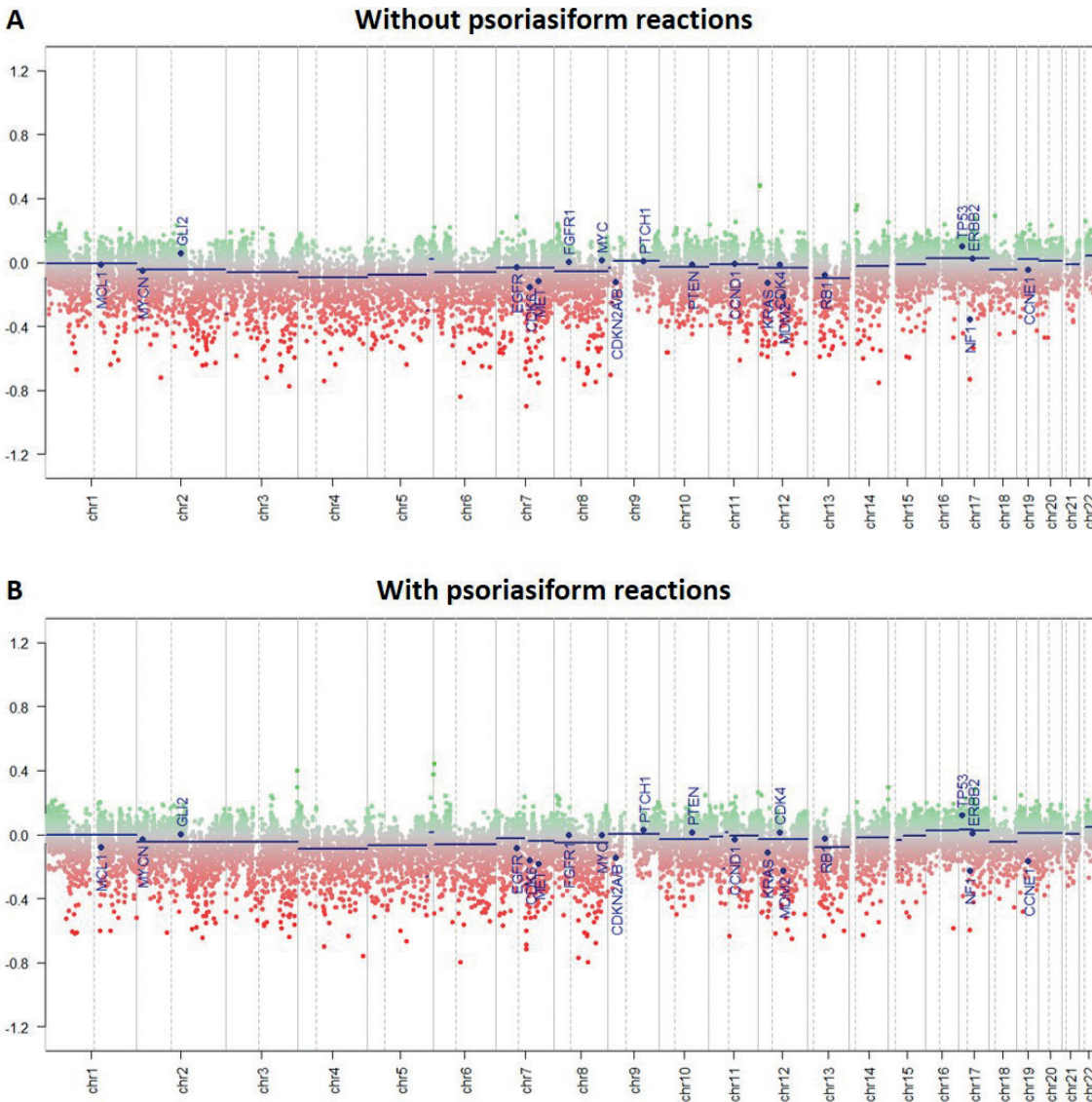
**Fig. S1. Conumee plots of copy number variations (CNVs) located along the whole genome.** Examples of conumee plots of: (A) an excellent responder (ER); and (B) a partial responder (PR) to anti-tumour necrosis factor (anti-TNF) drugs. *Blue lines* represent segments with the same CNV state, *dots* represent bins. *Green dots* represent CNV gains and *red dots* CNV losses.



**Fig. S2. Conumee plots of copy number variations (CNVs) located along the whole genome.** Examples of conumee plots of: (A) an excellent responder (ER); and or (B) a partial responder (PR) to adalimumab. *Blue lines* represent segments with the same CNV state, *dots* represent bins. *Green dots* represent CNV gains and *red dots* CNV losses. TNF: tumour necrosis factor.



**Fig. S3. Schematic representation of the genomic region containing the bins significantly associated with:** (A) adalimumab response; or (B) appearance of psoriasiform reactions.



**Fig. S4. Conumee plots of copy number variations (CNVs) located along the whole genome.** Examples of the conumee plot of a patient: (A) without; or (B) with a paradoxical psoriasiform reaction. *Blue lines* represent segments with the same CNV state, *dots* represent bins. *Green dots* represent CNV gains and *red dots* CNV losses.