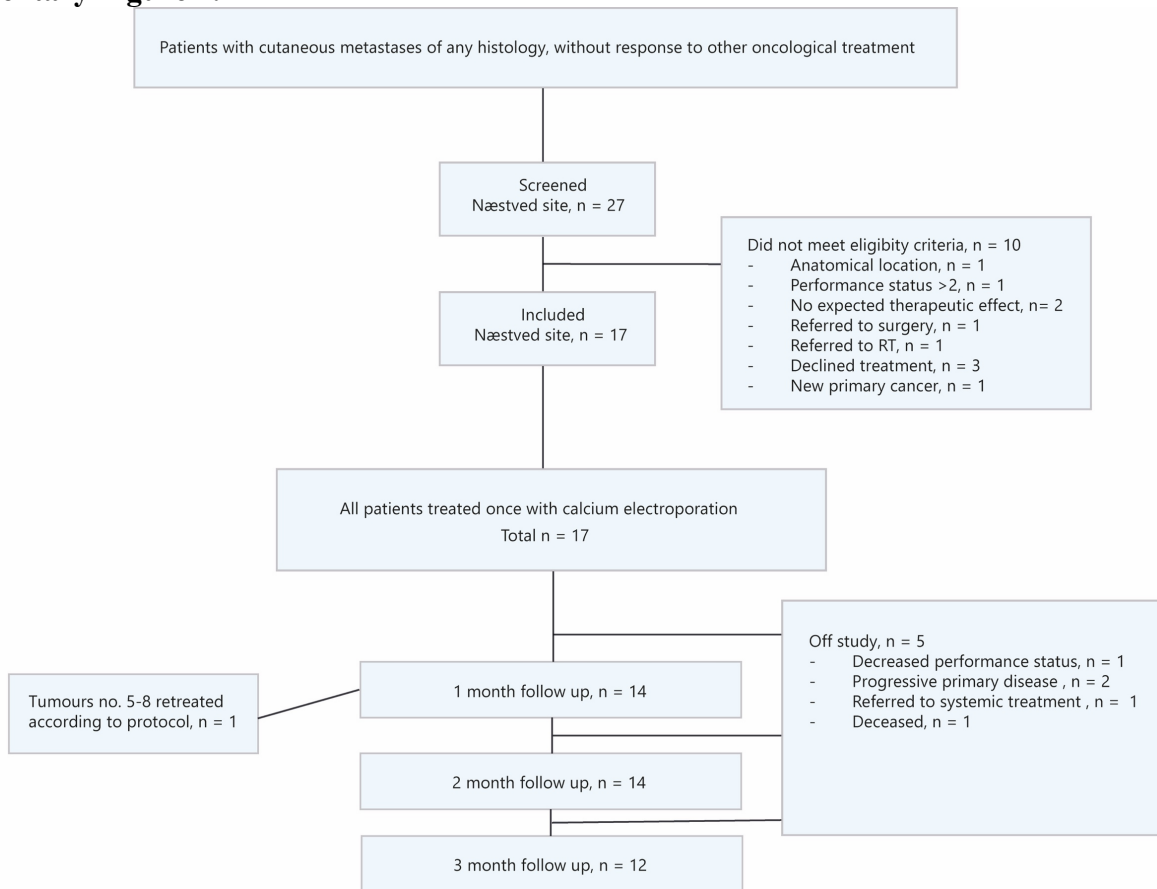
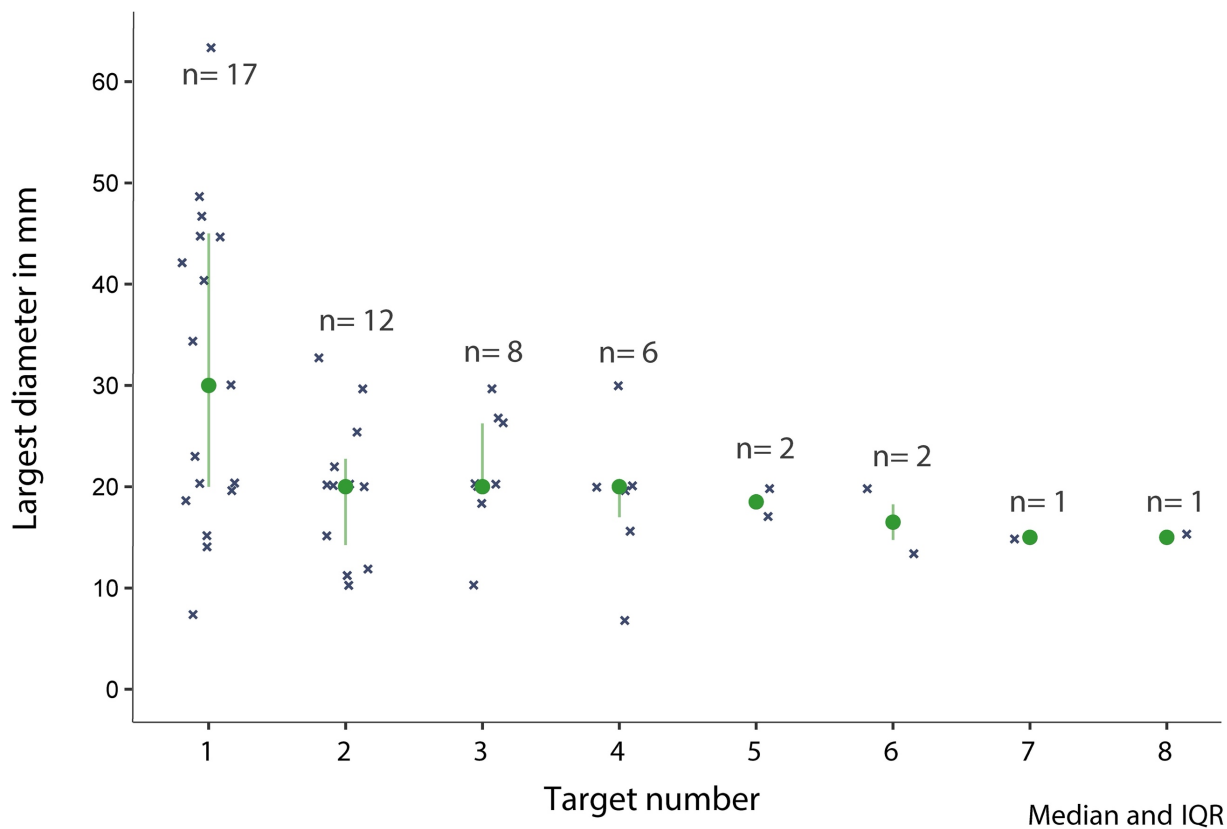


**Supplementary Figure 1.**

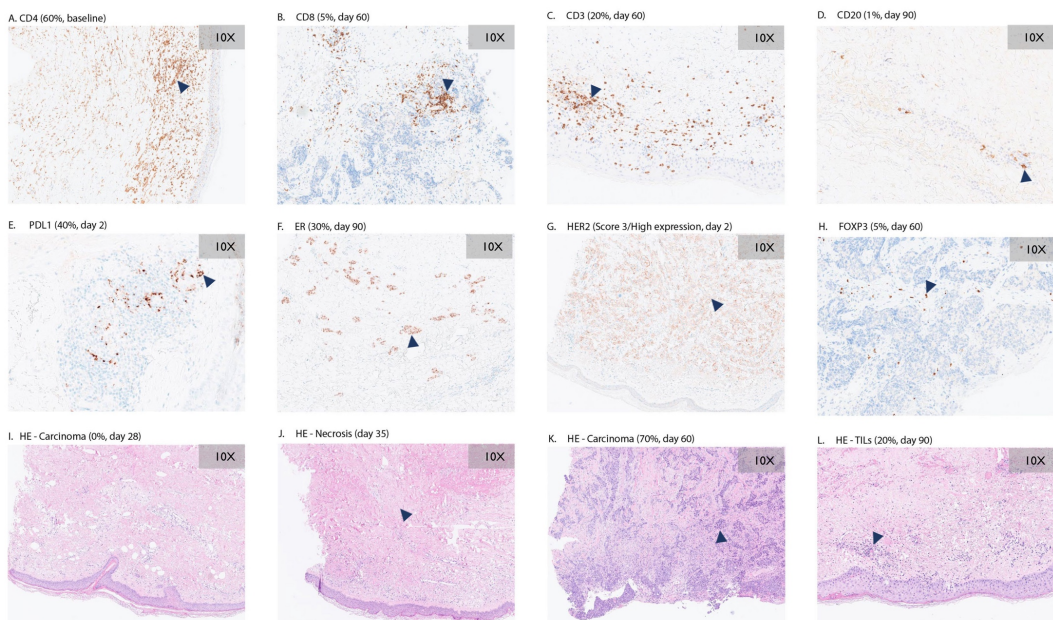


## Supplementary Figure 2. Size and number of target tumour lesions



## Supplementary Figure 3.

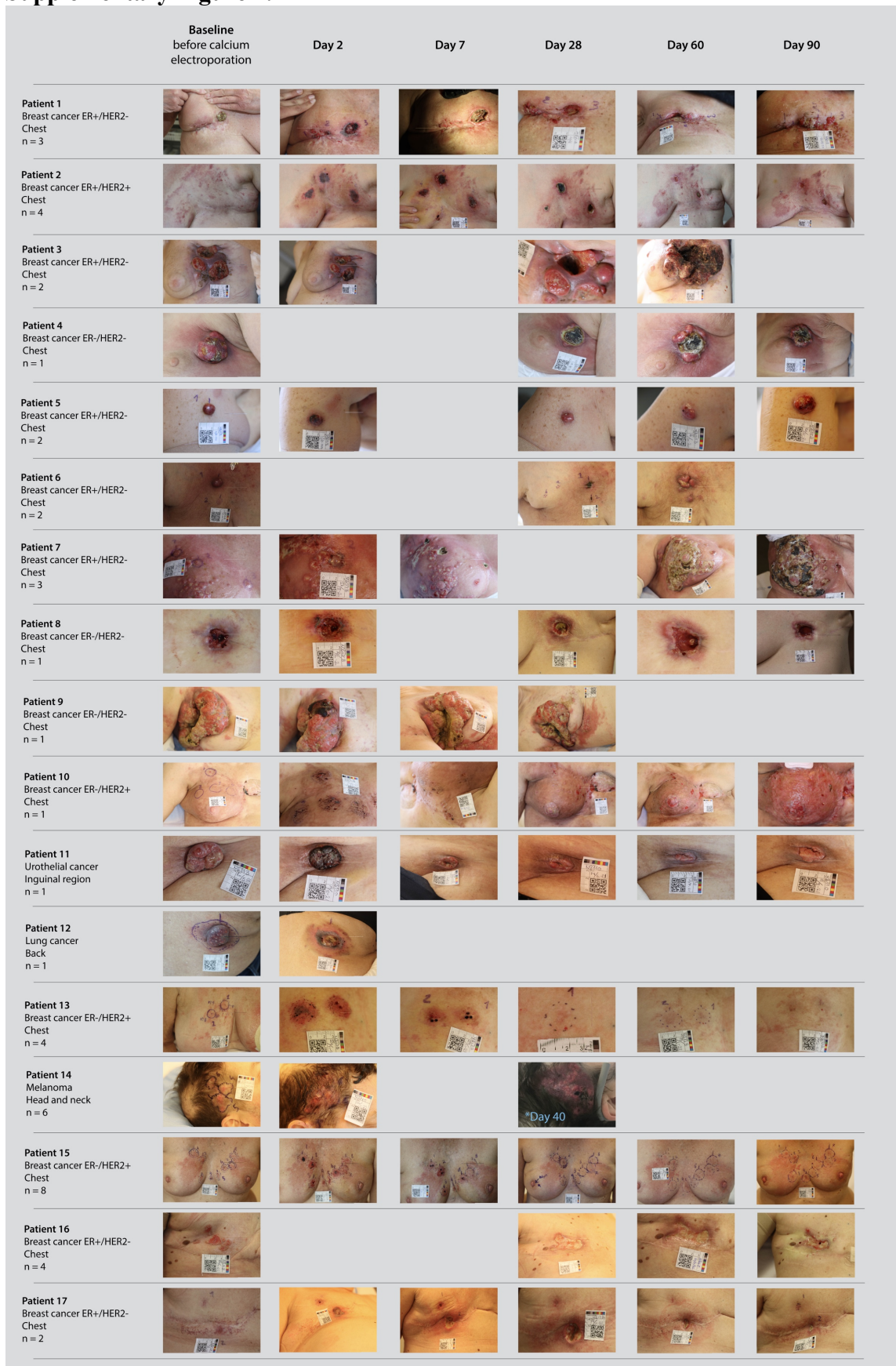
Examples of histological staining<sup>1</sup>



Marker (measure, days from calcium electroporation)

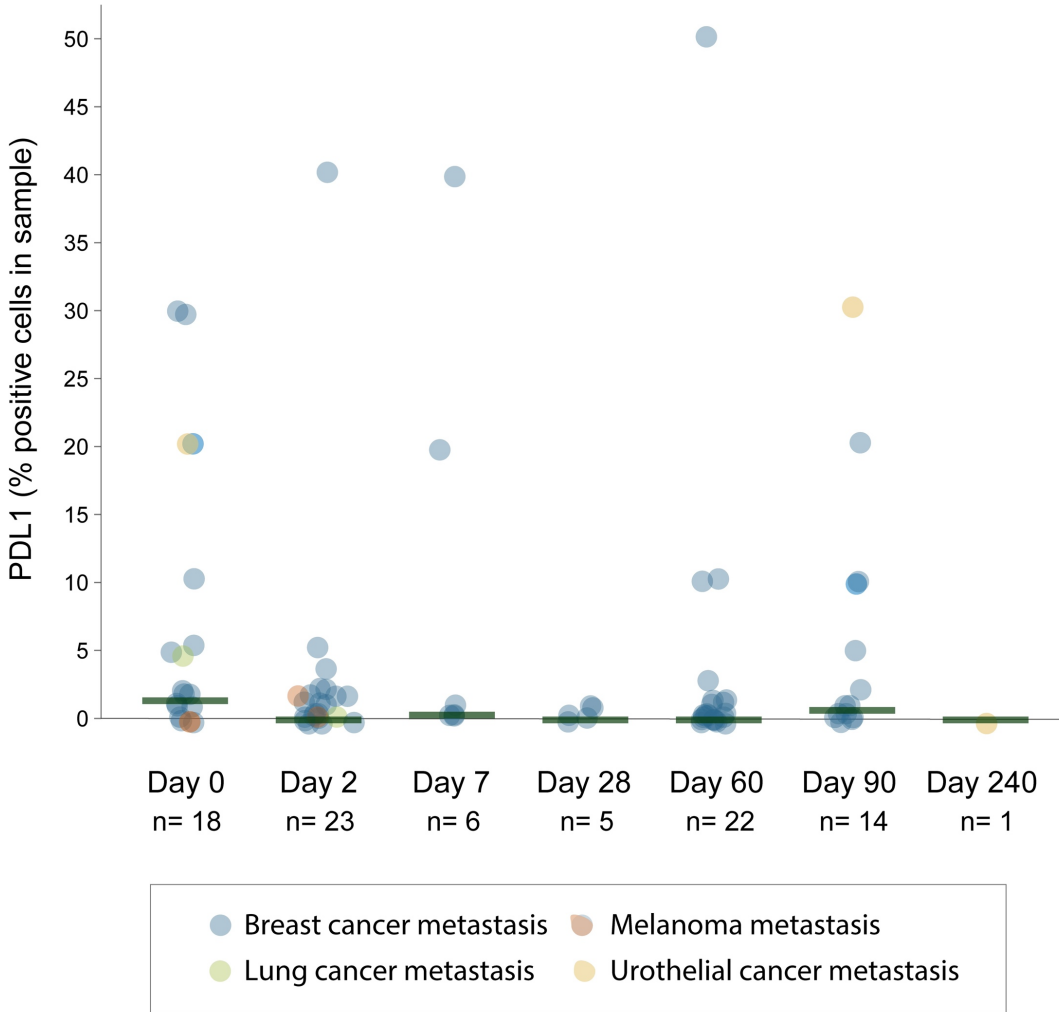
Sample specific: A. CD4 (60%, day 6, Pt 16, sample no. 101), B. CD8 (5%hotspot), Pt 15, day 60, sample no. 102, C. CD3 (20%, Pt 15, day 60, sample no. 108), D. CD20 (1%, Pt 15, day 90, sample no. 107), E. PDL1 (40%, Pt 13, day 2, sample no. 73), F. ER (30%, Pt 15, day 90, sample no. 107), G. HER2 (Score 3/High expression, Pt 15, day 2, sample no. 91), H. FOXP3 (5%, Pt 15, day 60, sample no. 102), I. HE - Carcinoma (0%, Pt 15, day 28, sample no. 96), J. HE - Necrosis (0%, Pt 15, day 35, sample no. 100), K. HE - Carcinoma (70%, Pt 15, day 60, sample no. 102), L. HE - TILs (20%, Pt 15, day 90, sample no. 108)

## Supplementary Figure 4.



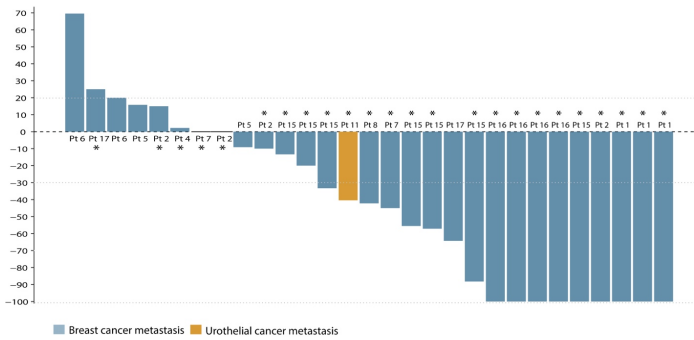
**Supplementary Figure 5.**

PDL1 expression in samples day 0-240 after calcium electroporation

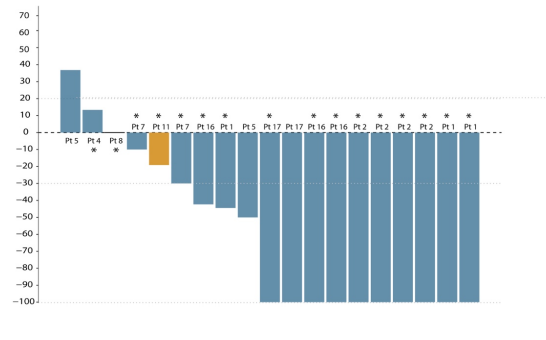


**Supplementary Figure 6.**

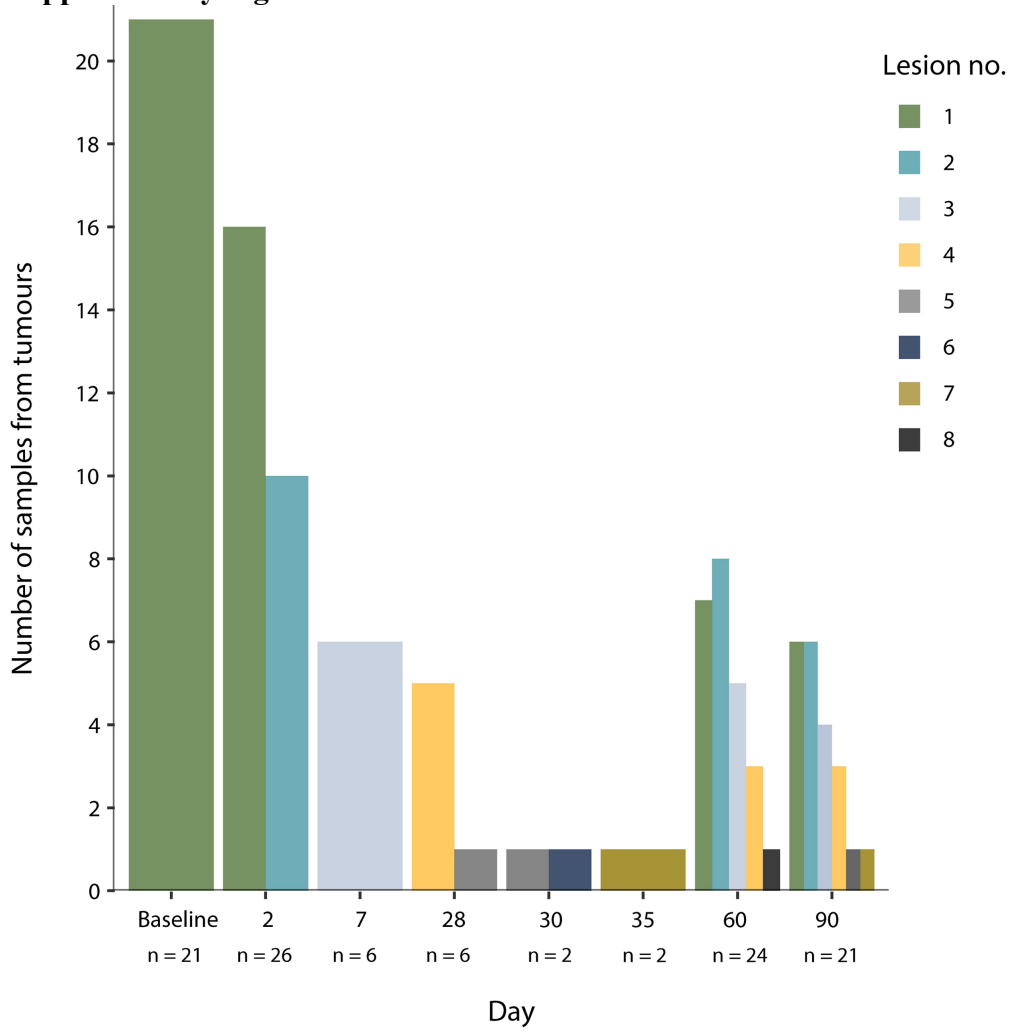
A. Response day 60 (% change in diameter from baseline, n = 29)



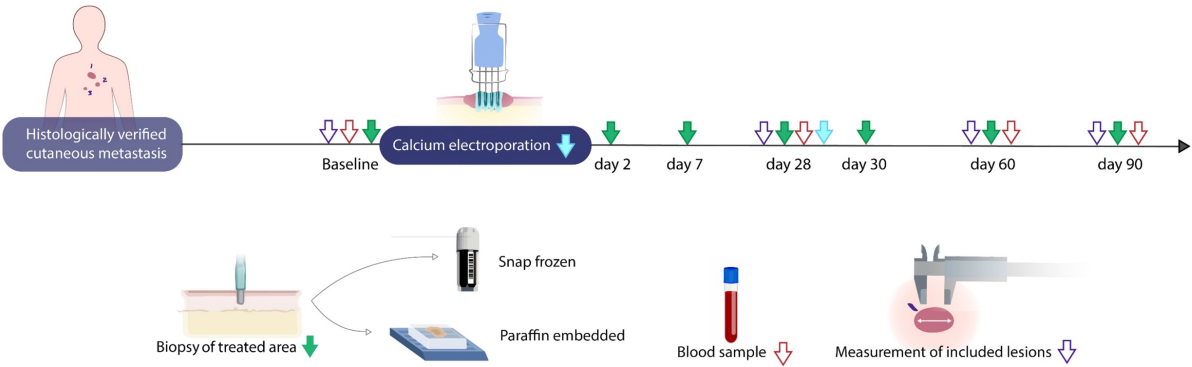
B. Response day 90 (% change in diameter from baseline, n = 19)



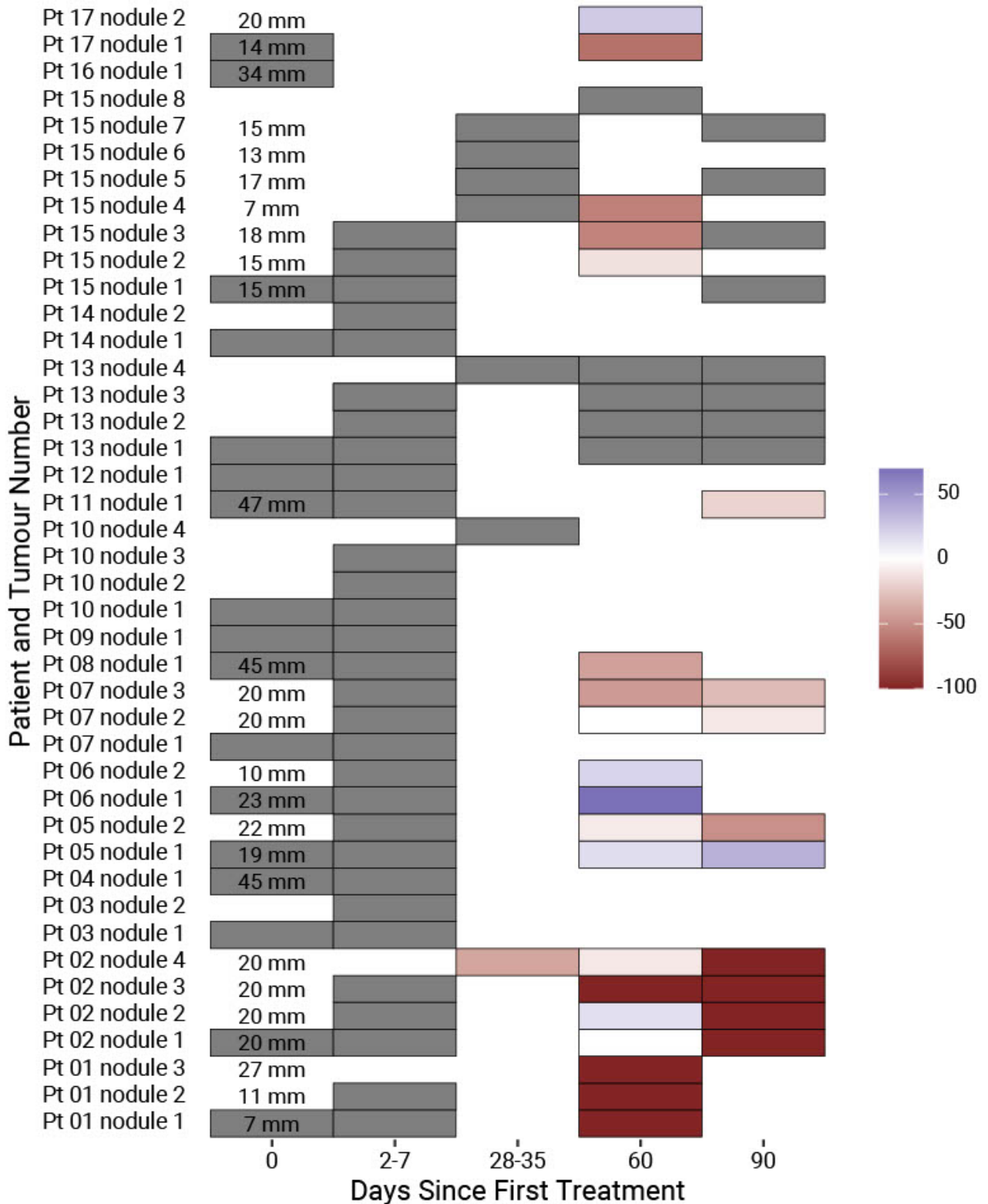
Supplementary Figure 7.



Supplementary Figure 8.



**Supplementary Figure 9.**



Grey boxes denote a tumour biopsy where data on change in size relative to baseline was not recorded.  
 Other fill colors of boxes denotes percent change in tumour size from baseline.  
 The blank area represent potential test days on which the nodule was not biopsied.  
 The text on the plot above day 0 gives the size of that specific tumour at baseline