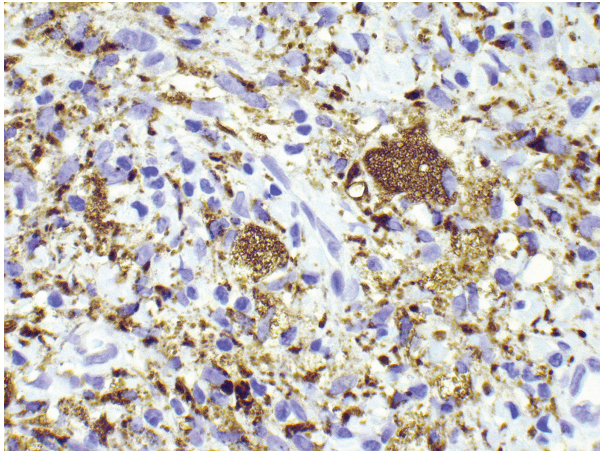
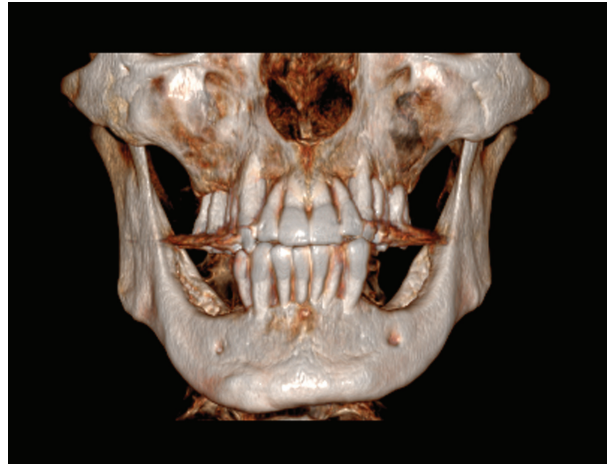


*Supplementary material for* Blomstrand L. et al. Erdheim-Chester disease presenting as periodontal disease: Experience of treatment with cladribine, interferon- $\alpha$ , local radiotherapy and anakinra. *Acta Oncol* 2015, Doi: 10.3109/0284186X.2015.1023463.



Supplementary Figure 1. CD68+ antibody incubated section (X60) identifying macrophages as brown cells (first diagnosis in 2004).



Supplementary Figure 2. Cone beam CT from 2012 in 3D illustrating the resulting loss of bone in both maxilla and mandible.