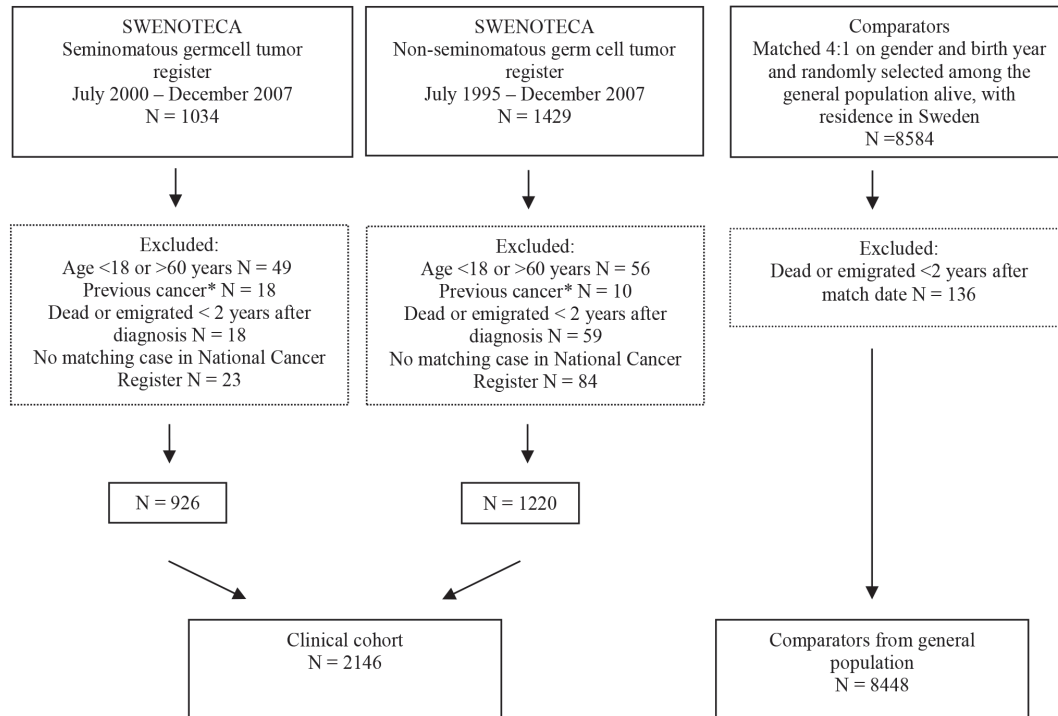
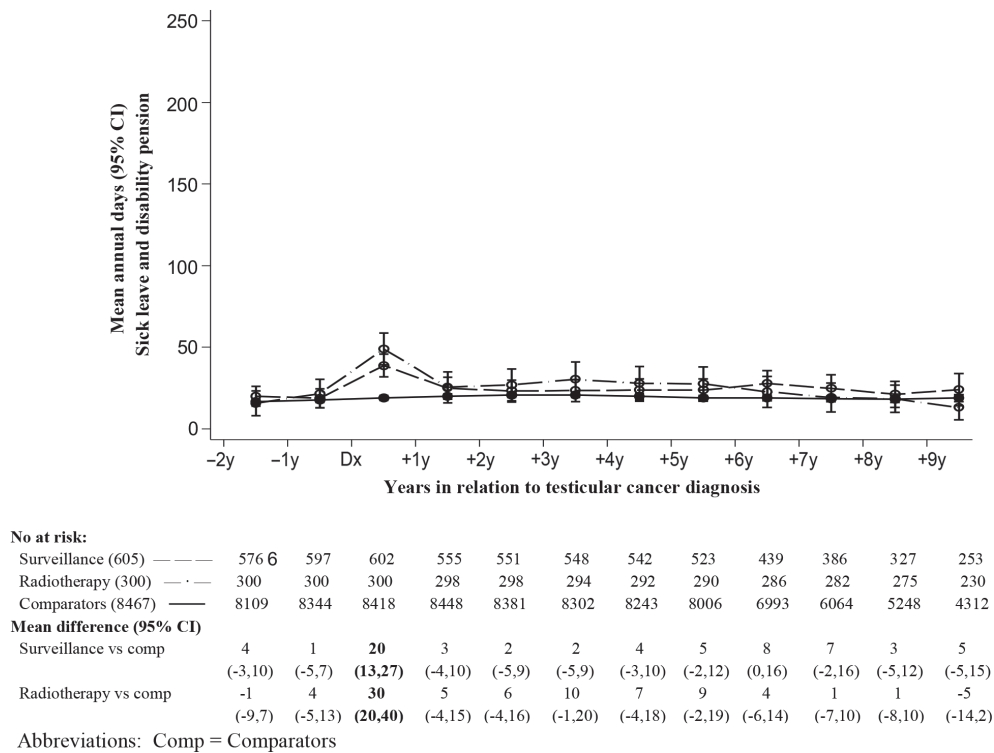


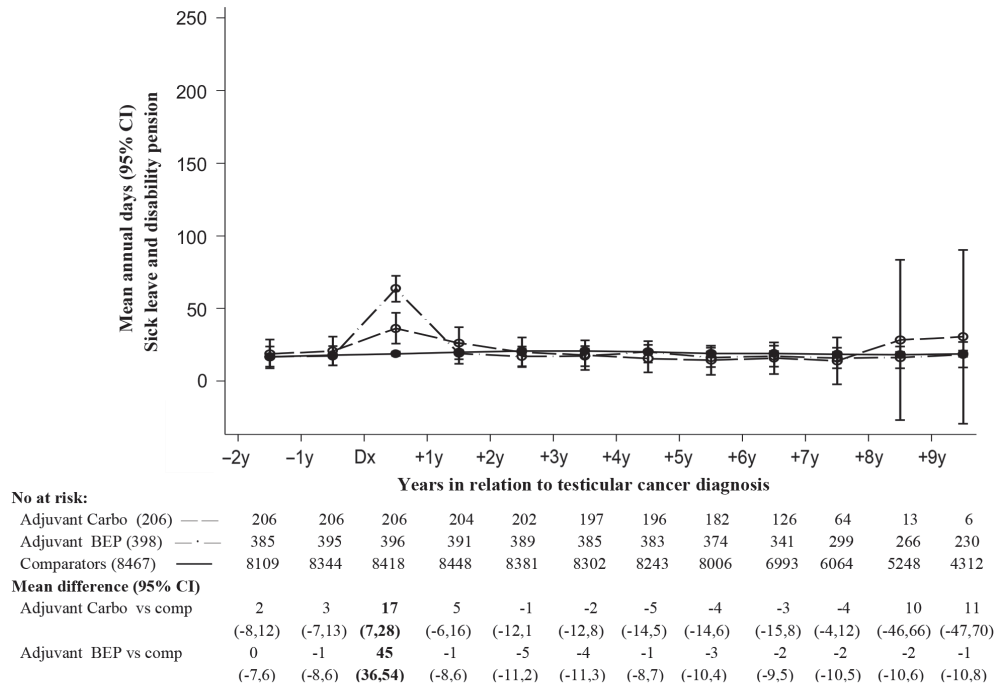
Supplementary material for Nord C. et al. Sick leave and disability pension among Swedish testicular cancer survivors according to clinical stage and treatment, Acta Oncologica, 2015. doi: 10.3109/0284186X.2015.1020967



Supplementary Figure 1. Flow chart of inclusion/exclusion of testicular cancer survivors (TCSs) and population comparators. *Previous non-melanoma skin cancer not excluded.



Supplementary Figure 2. Mean annual days of sick-leave or disability pension from 2 years before, up to maximum 10 years after diagnosis (Dx) for TCSs treated with surveillance or radiotherapy, and comparators. The numbers at risk and differences in mean annual days between TCSs and comparators, with 95% CI, are displayed below the graph.



Abbreviations: Comp, Comparators; Carbo, Carboplatin; BEP, Bleomycin, Etoposide, Cisplatin.

Supplementary Figure 3. Mean annual days of sick-leave or disability pension from 2 years before, up to maximum 10 years after diagnosis (Dx) for TCSs treated with adjuvant Carboplatin or BEP (Bleomycin, Etoposide, Cisplatin) and comparators. The numbers at risk and differences in mean annual days between TCSs and comparators, with 95% CI, are displayed below the graph.

Supplementary Table I. Specification of treatment modalities used for patients with testicular cancer in Sweden during the study period.

Regimen	Drug	Daily Dose (mg/m ²)	Day
Carboplatin adjuvant EP	Carboplatin	AUC = 7 ^c	1
	Etoposide	100	1-5
	Cisplatin	20	1-5
BEP	Bleomycin ^a	30 000IE	1,5,16
	Etoposide	100	1-5
	Cisplatin	20	1-5
BEC ^b	Bleomycin ^a	30 000IE	1,5,16
	Etoposide	100	1-5
	Carboplatin	AUC = 7 ^c	1
	Bleomycin ^a	30 000IE	1,5,16
BEP-if	Bleomycin ^a	30 000IE	1,5,16
	Etoposide	75	1-5
	Cisplatin	20	1-5
	Ifosfamide	1200	1-5
	Mesna	240	1-5
	Mesna (po)	480	1-5
PEI	Etoposide	100	1-5
	Cisplatin	20	1-5
	Ifosfamide	1200	1-5
	Mesna	240	1-5
	Mesna (po)	480	1-5
High Dose Chemotherapy cycle 1 ^d	Cyclofosfamide	1500	1-4
	Etoposide	440	1-4
	Carboplatin	AUC = 7 ^c	1-4
High Dose Chemotherapy cycle 2 ^e	Cyclofosfamide	1500	1-4
	Thiotepa	60x2	1-4
	Carboplatin	AUC = 7 ^c	1-4

^aBleomycin was omitted after a cumulative dose of 300000 IU; ^bIn case cisplatin was replaced by carboplatin; ^cAccording to Calvert's formula [29]; ^dModification of the regimen described by Ibrahim [30]; ^e Modification of the regimen described by Rodenhuis [31], given 6-7 weeks after High Dose Chemotherapy cycle 1.