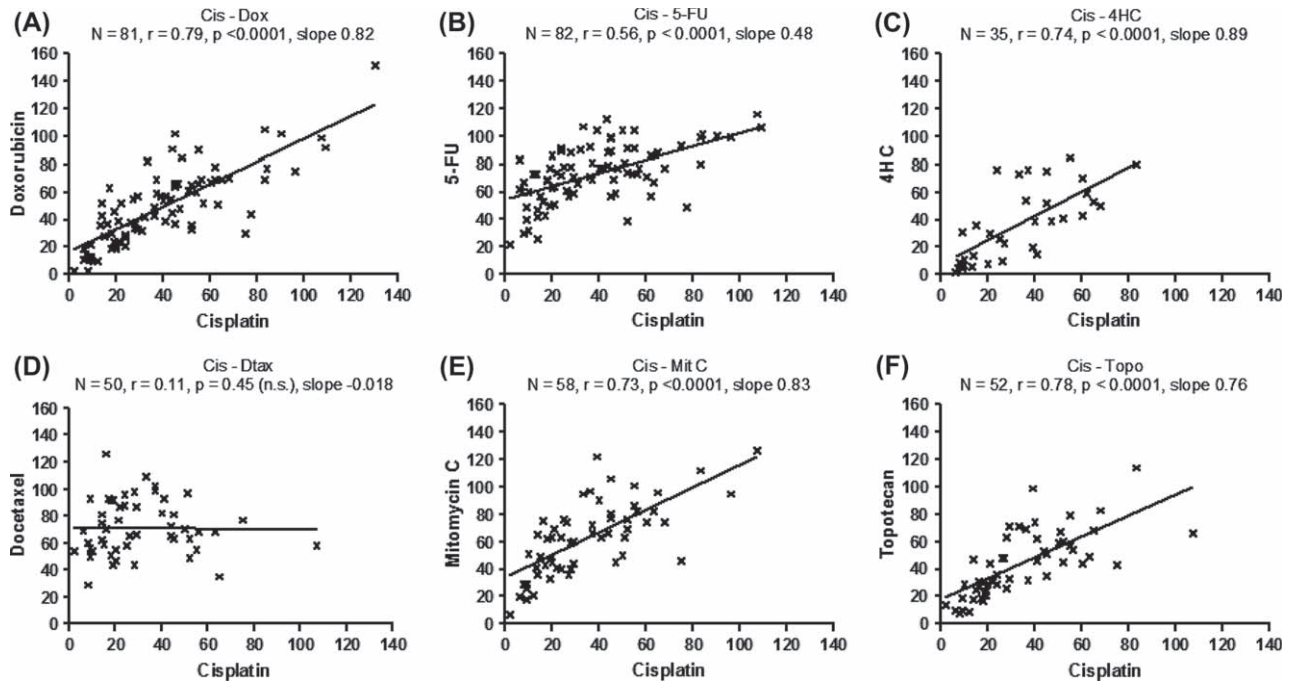
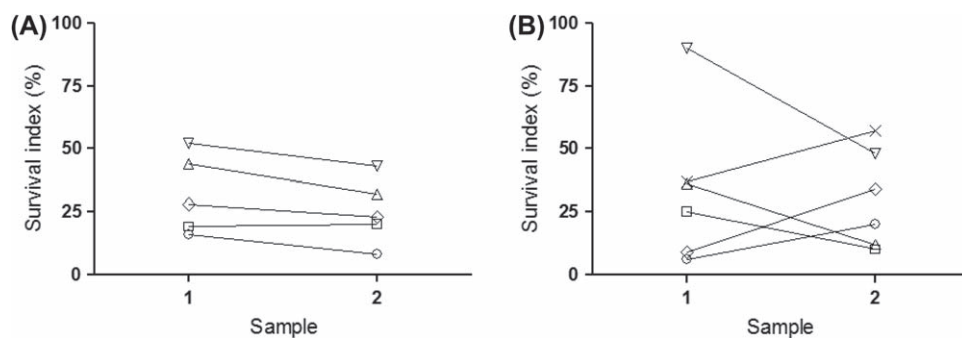


Supplementary material for Heideman AV, et al. Chemotherapeutic drug sensitivity of primary cultures of epithelial ovarian cancer cells from patients in relation to tumour characteristics and therapeutic outcome. Acta Oncol 2014;53:242–250.



Supplementary Figure 1. Correlation between survival indices for individual tumour samples investigated for both cisplatin and the drugs indicated in A-F. The number of samples (N), correlation coefficients (r) and p-values are shown together with the regression lines (slope). The data points are from the whole patient material irrespective of histological subtype, type of sample and prior treatment status. C; Topo, topotecan; Cis, cisplatin; Dox, doxorubicin; Dtax, docetaxel; 4HC, 4-hydroperoxycyclophosphamide; MitC, mitomycin.



Supplementary Figure 2. Survival index for cisplatin of two samples from the same patient taken on the same occasion (A) or on different occasions (B). C; Topo, topotecan; Cis, cisplatin; CR, complete response; Dox, doxorubicin; Dtax, docetaxel; 4HC, 4-hydroperoxycyclophosphamide; MitC, mitomycin; PR, partial response; SD/PD, stable or progressive disease.

Supplementary Table I. In vitro sensitivity versus clinical response. See text for method details. Numbers relate to number of patients in each category. Abbreviations: Sensitive in vitro: tumour cells sensitive in vitro to the drugs used, Resistant in vitro: tumour cells resistant in vitro to the drugs used, Clinical response: CR or PR, No clinical response: SD or PD.

A. 'Classic' analysis.

FMCA result	Clinical response	No clinical response	Sum
Sensitive in vitro	16	15	31
Resistant in vitro	5	11	16
Sum	21	26	Total 47

FMCA test sensitivity 76%, specificity 42%,  $p = 0.23$ .

B. 'Delimited' analysis.

FMCA result	Clinical response	No clinical response	Sum
Sensitive in vitro	15	5	20
Resistant in vitro	3	6	9
Sum	18	11	Total 29

FMCA test sensitivity 83%, specificity 55%,  $p = 0.048$ .

C. 'Confined' analysis.

FMCA result	Clinical response	No clinical response	Sum
Sensitive in vitro	12	1	13
Resistant in vitro	0	5	5
Sum	12	6	Total 18

FMCA test sensitivity 100%, specificity 83%,  $p = 0.0007$ .