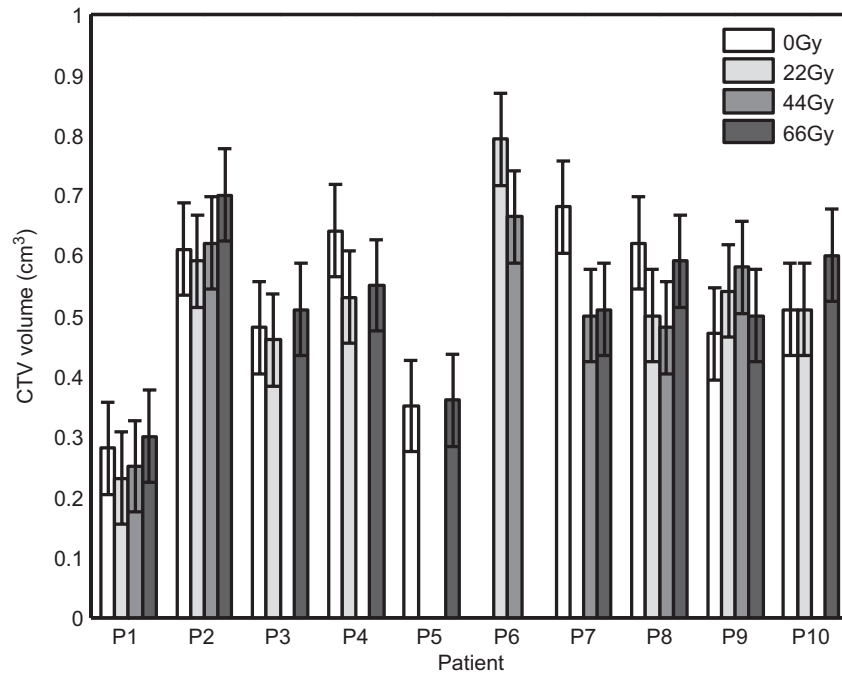
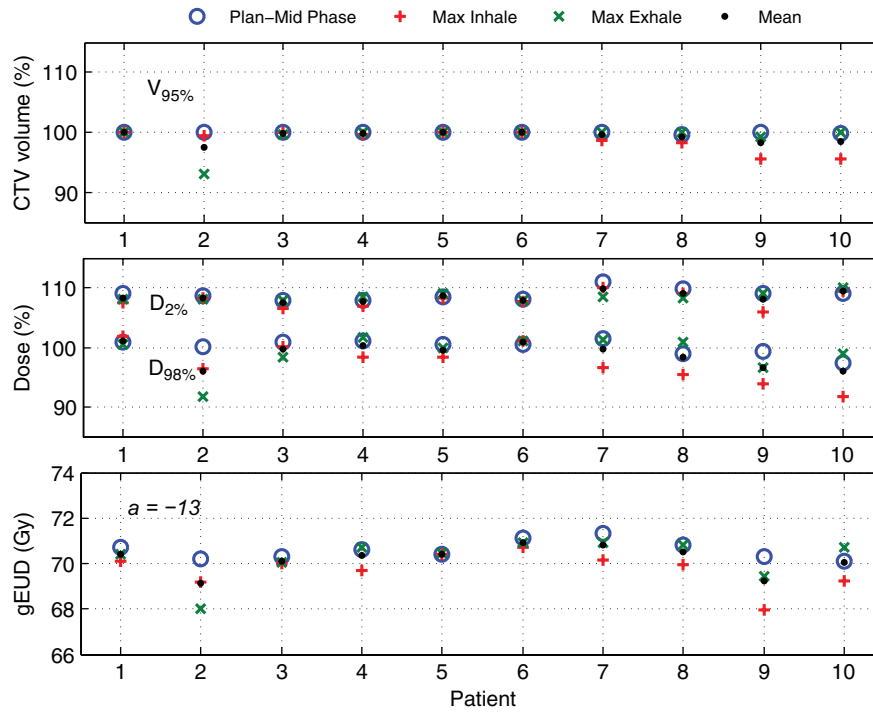


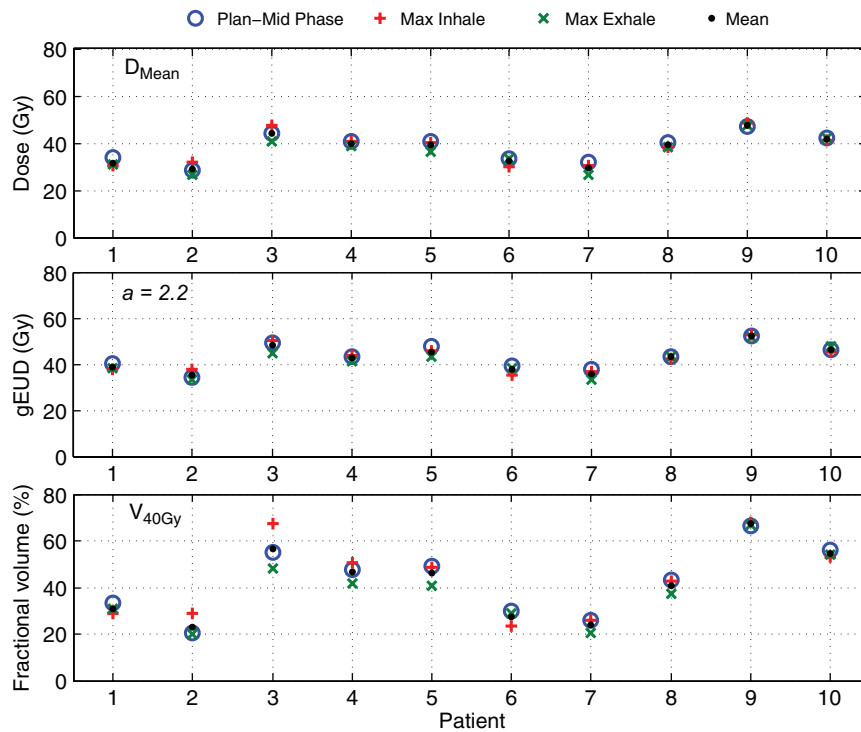
Supplementary material for Osman SOS, et al. Impact of geometric variations on delivered dose in highly focused single vocal cord IMRT. Acta Oncol, 2014;53:278–285.



Electronic Figure 1. Changes in the CTV volumes with proceeding treatment time shown for all the patients. The error bars represents the intra-observer uncertainty.



Electronic Figure 2. Variations in the CTV dose in extreme respiration phases compared to planned dose. Upper panel: percentage of the CTV receiving dose of $\geq 95\%$ of the prescribed dose. Middle: dose received by 98% of the CTV, and the dose (%) received by the hottest 2% of the CTV. Lower: CTV generalized equivalent uniform dose for each simulated situation.



Electronic Figure 3. Variations in the mean dose (D_{Mean}), (gEUD) and (V_{40Gy}) of the CL vocal cord in extreme respiration phases compared to the planned dose parameters.