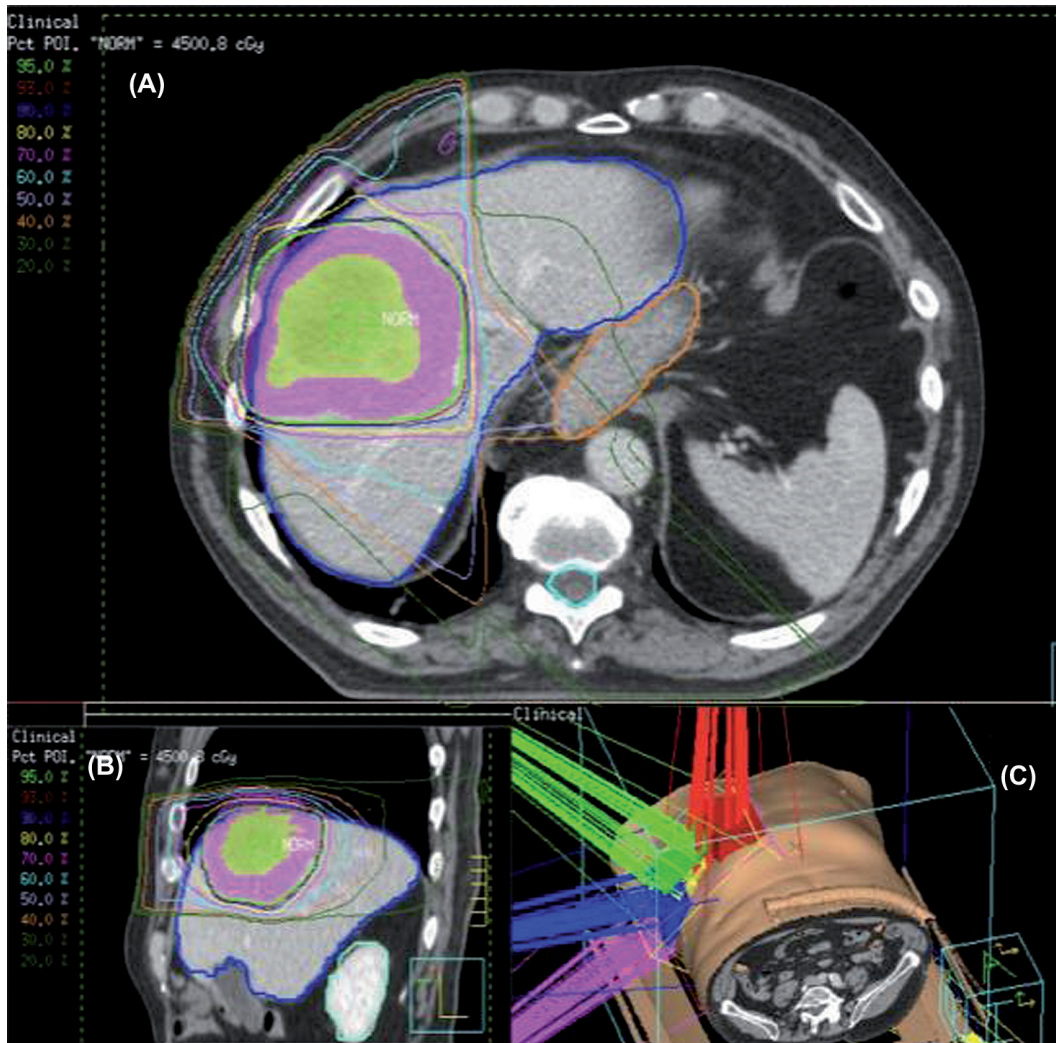
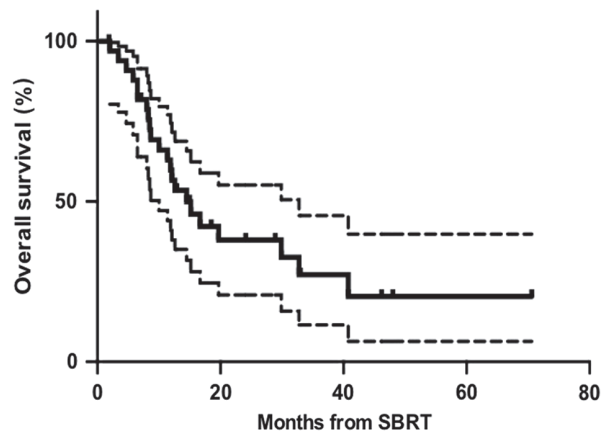


Supplementary material for Aitken et al., Risk-adapted strategy partial liver irradiation for the treatment of large volume metastatic liver disease, *Acta Oncologica*, 2014;53:702–706.



Supplementary Figure 1. Axial (A) and sagittal (B) planning CT slices to illustrate example GTV, PTV and radiotherapy plan. GTV is shown in light green, PTV in pink. (C) shows a rendered image illustrating five field beam arrangement.



Supplementary Figure 2. To demonstrate overall survival post SBRT (dotted lines show 95% confidence intervals).

Supplementary Table I. Radiotherapy normal tissue constraints.

Normal tissue	Dose constraint
Normal liver	V30 < 27 Gy V50 < 24 Gy
Kidney	33% of combined renal volume < 18 Gy
Spinal cord	Max 34 Gy
Stomach	1 cm ³ max 37 Gy
Duodenum	1 cm ³ max 37 Gy
Small bowel	1 cm ³ max 37 Gy
Oesophagus	1 cm ³ max 37 Gy
Heart	1 cm ³ max 40 Gy
Both lungs	V20 < 10%

Supplementary Table II. Baseline patient characteristics.

Patient characteristics	n	%
Total patients	34	
Total lesions	46	
Age (years)		
Median	71	
Range	44–85	
Liver lesions per patient		
1	24	70.6
2	8	23.5
3	2	5.9
Primary histology		
Colorectal	27	79.4
• K-ras wild type	26	76.5
• K-ras mutant	1	2.9
Breast	4	11.8
Sarcoma	2	5.9
Anal	1	2.9
Previous systemic therapy for metastatic disease		
Yes	27	79.4
• 1 line	8	33.3
• 2 lines	12	35.3
• 3 lines	4	11.8
• 4 lines	3	8.8
No	7	20.6
Prior biological agent	11	32.3
ECOG Performance status		
0	14	41.1
1	15	44.1
2	5	14.7
Extrahepatic disease present at time of SBRT		
Yes	12	35.3
• Lung	6	17.6
• Pelvis	4	11.8
• Bone	2	5.9
• Peritoneum	1	2.9
No	22	64.7

Supplementary Table III. Lesion characteristics.

Lesion characteristics	N = 42	%
Previous liver-directed therapy		
• Yes	16	47.0
• No	18	52.9
Surgical resection only	4	11.8
RFA only	8	23.5
Surgery and RFA	4	11.8
Portal vein embolisation	2	5.9
	Median	Range
Lesion maximum dimension (cm)	5.1	2.1–13.5
Lesion volume (ml)		
• All lesions	36.9	2.0–614.0
• Largest per patient	50.7	2.0–614.0
GTV volume per patient (ml)	73.1	2.0–614.0