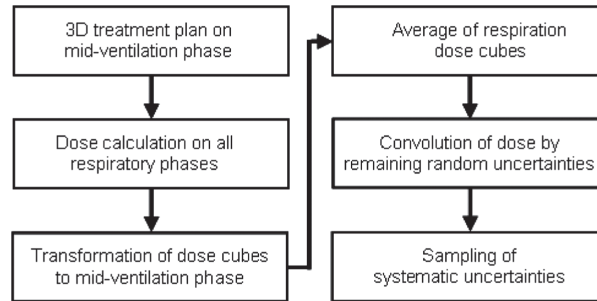
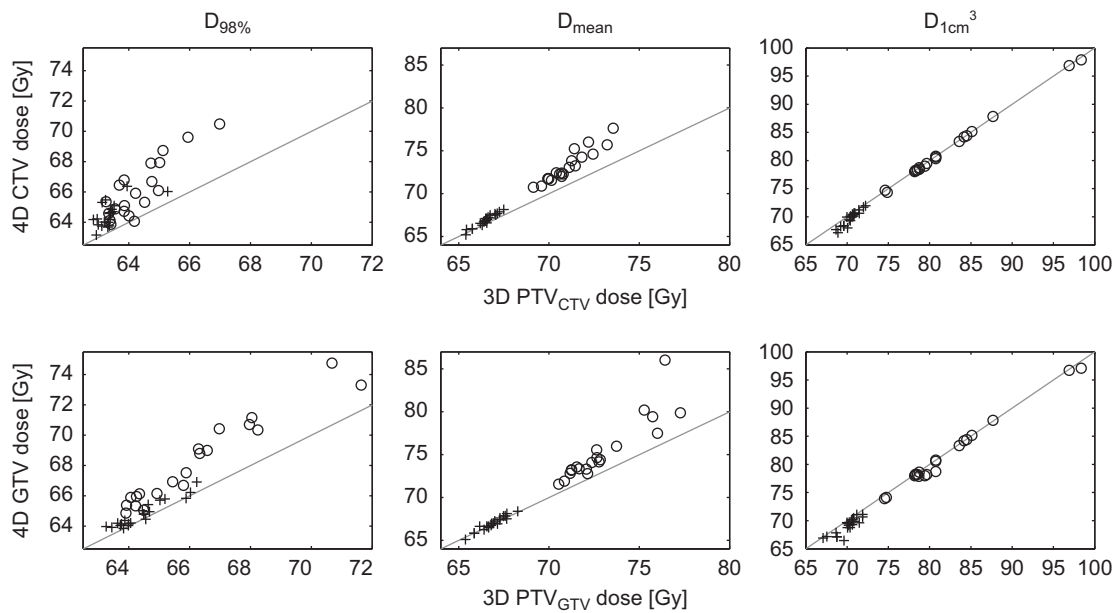


Supplementary material for Nielsen T. B. et al. Four-dimensional dose evaluation of inhomogeneous dose distributions planned for non-small cell lung cancer patients with lymph node involvement, *Acta Oncologica*, 2013;53:707–712.



Supplementary Figure 1. Schematic of 4D calculations.



Supplementary Figure 2. Comparison of dose coverage for 3D PTV and 4D calculations for moving CTV or GTV. 4D patient values are given as average of the calculated 4D values and confidence interval for 4D dose is omitted as it is on the order of the marker size. Crosses shows homogeneous distributions and circles inhomogeneous distributions for all patients. The line is $x = y$.