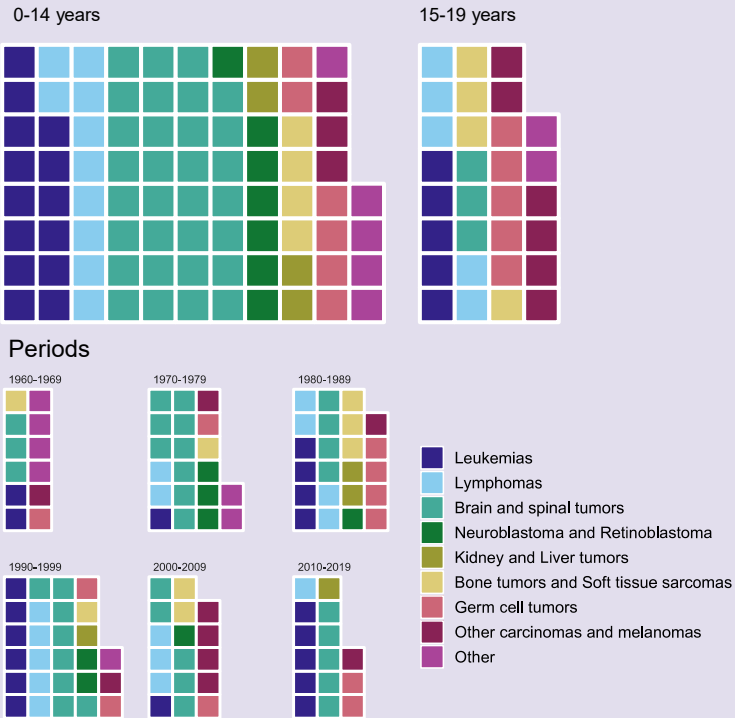


Childhood cancer incidence and survival in the Faroe Islands, 1960 to 2019

Children with cancer from 1960 to 2019



Waffle plots showing cancers in children in the Faroe Islands by type. Each square represents one cancer case.

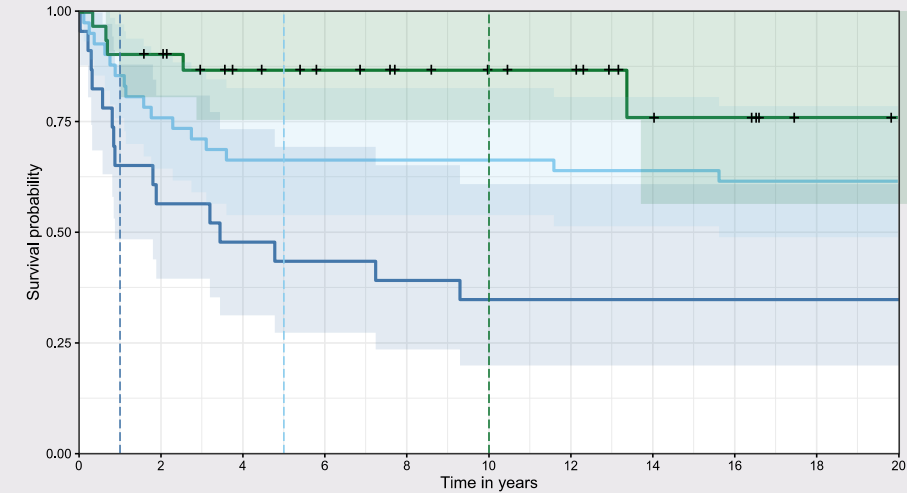
The upper panel shows the distribution of cancers aged 0-14 and 15-19 diagnosed from 1960 to 2019. The lower panel 10-year periods from 1960 to 2019.

Objective

We report the incidence and survival of childhood cancer over a 60 year period in the Faroe Islands

Findings

A total of 114 children were diagnosed with cancer. Brain cancer was the most common type. Survival has improved in the later periods



	1-year survival (95% CI)	5-year survival (95% CI)	10-year survival (95% CI)
1960 – 1979	65.2 (48.4 – 87.9)	43.5 (27.3 – 69.3)	34.8 (19.9 – 60.9)
1980 – 1999	85.7 (75.8 – 97.0)	66.7 (53.8 – 82.6)	66.7 (53.8 – 82.6)
2000 – 2019	90.3 (80.5 – 100)	86.7 (75.4 – 99.8)	86.7 (75.4 – 99.8)

Kaplan Meier plot showing all-cause survival for Faroese children diagnosed with cancer, stratified by 20-year periods for the time of diagnosis.