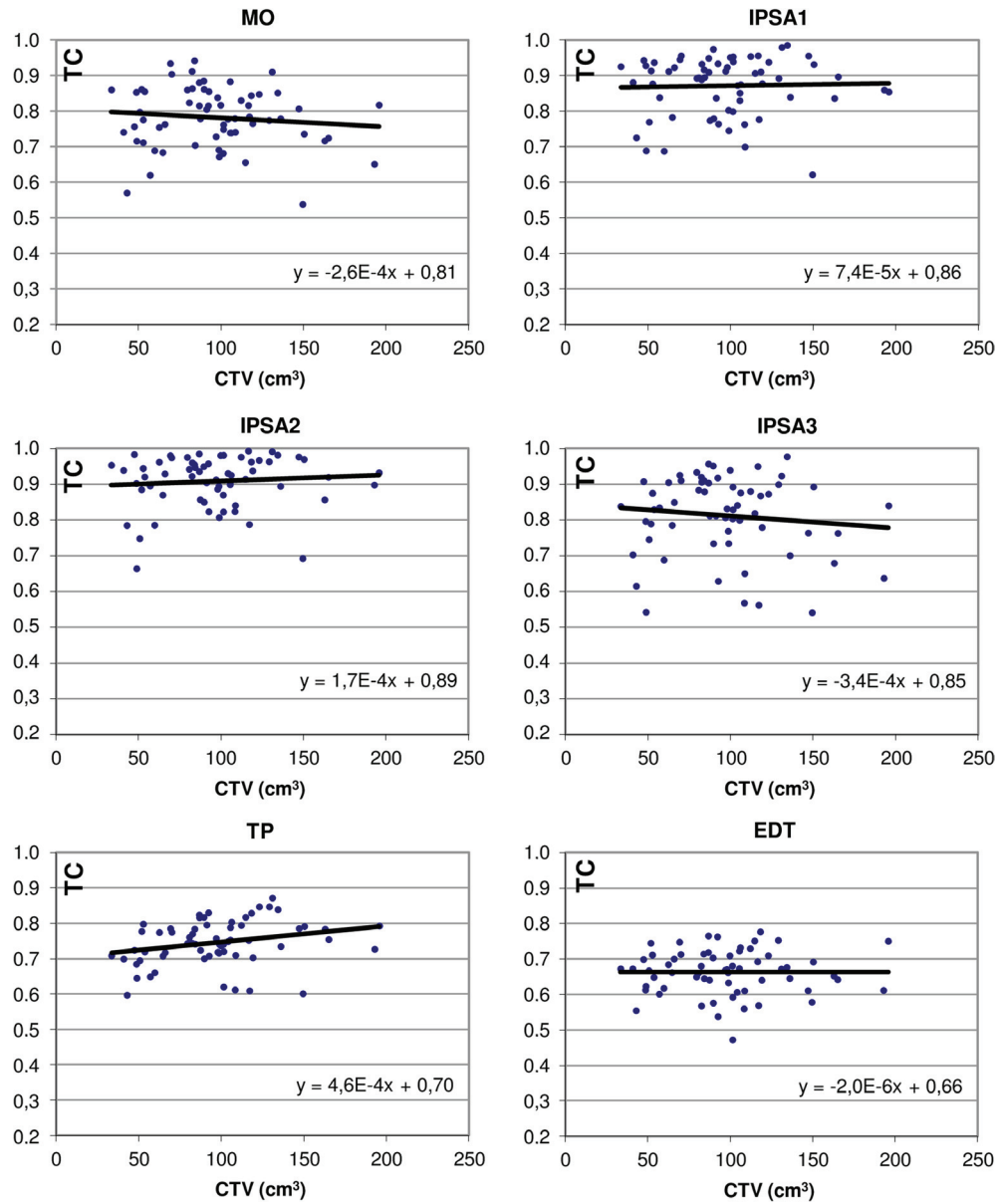
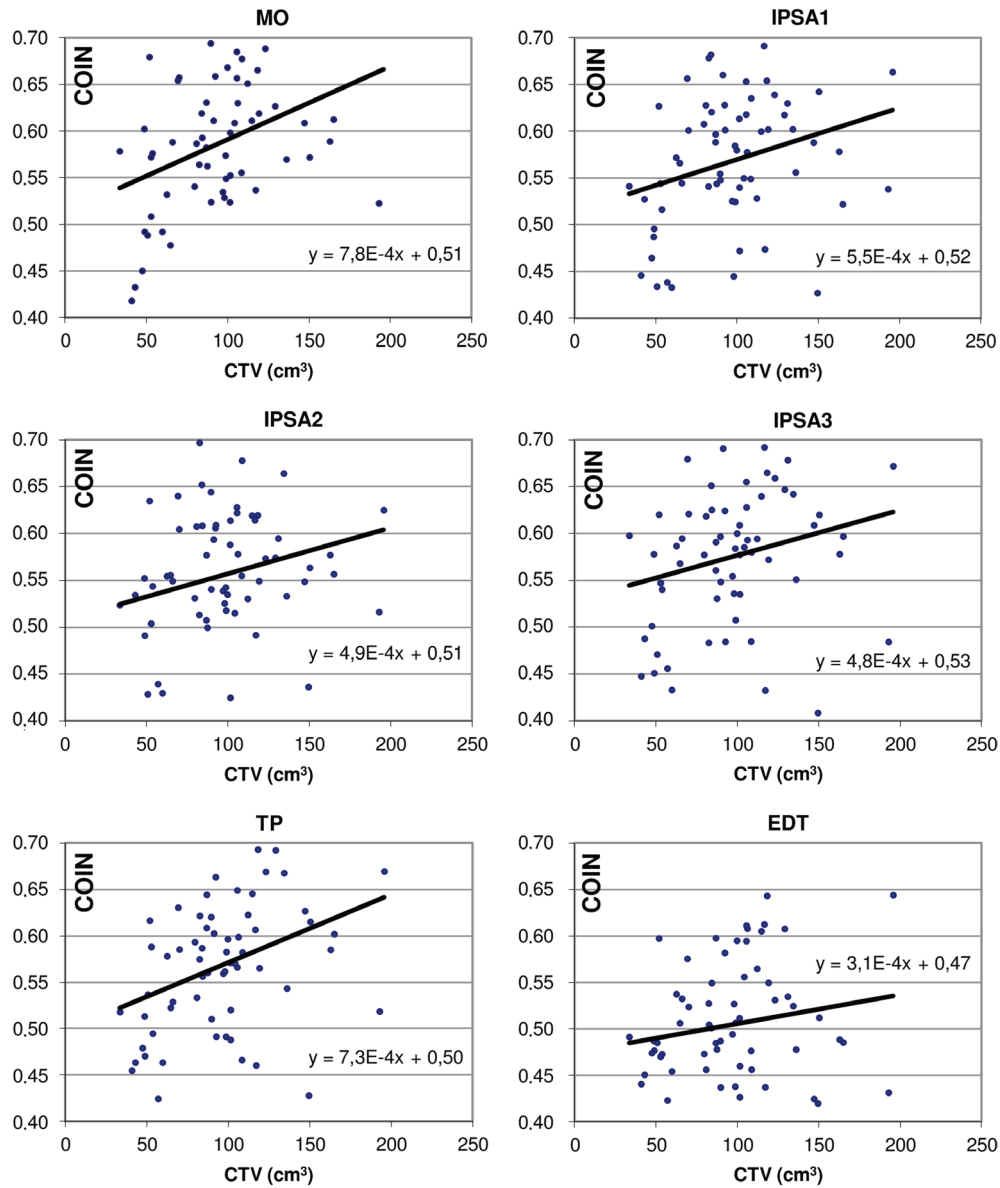


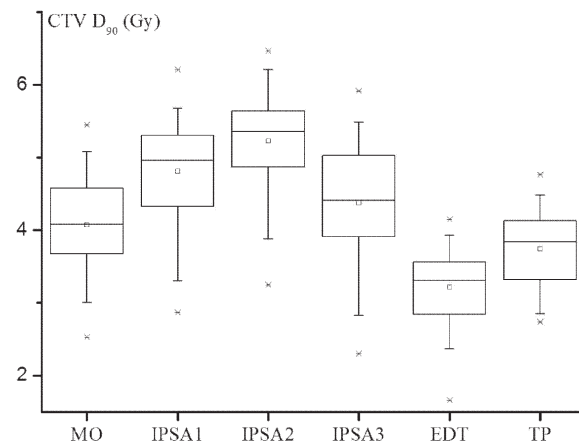
Supplementary material for Palmqvist T, et al. Dosimetric evaluation of manually and inversely optimized treatment planning for high dose rate brachytherapy of cervical cancer. Acta Oncol 2014;53:1012–8.



Supplementary Figure 1. Data set of the target coverage with linear regression curves for all treatment plan approaches.



Supplementary Figure 2. Data set of COIN with linear regression curves for all treatment plan approaches.



Supplementary Figure 3. Box plot comparison of the dosimetric parameter CTV D₉₀ used in treatment plan evaluation. The 25th and 75th percentiles are represented as a box meanwhile the whiskers are showing the 5th and 95th percentiles. The median and the mean value are showed as a horizontal line and a small square within the box, respectively. Max and min values are star-market.