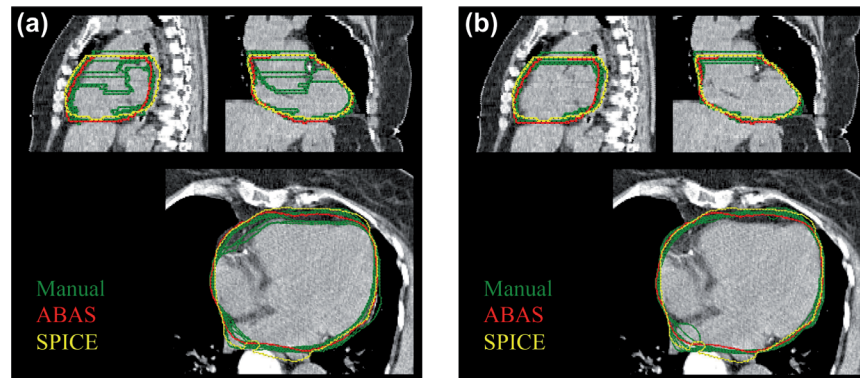


Supplementary material for Lorenzen EL, et al. Automatic segmentation of the heart in radiotherapy for breast cancer. Acta Oncol. 2014;53:1366–72.



Supplementary Figure 1. Heart delineations for one of the 15 patients. Automatic delineation compared to manual delineations performed by the nine observers without and with common guidelines is shown in (a) and (b) respectively.

Supplementary Table I. The inter-observer variation in manual estimates of volume, mean and maximum dose is shown as the overall standard deviation (RMS of the inter-observer standard deviation within each patient). The difference between each of the automatic systems and the average manual estimates is shown as the mean difference and the standard deviation of the difference.

	Units	Manual variation		ABAS		SPICE	
		SD	Mean difference	SD	Mean difference	SD	
Without guidelines							
Volume	cm ³	88.3	90.8	29.0	91.2	40.3	
Mean dose	Gy	0.19	0.045	0.13	0.065	0.18	
Maximum dose	Gy	3.7	0.70	3.2	0.92	4.8	
With guidelines							
Volume	cm ³	43.8	7.3	21.3	7.6	34.0	
Mean dose	Gy	0.10	-0.080	0.15	-0.059	0.20	
Maximum dose	Gy	1.9	-1.7	2.5	-1.5	3.8	