

Supplementary material has been published as submitted. It has not been copyedited, or typeset by Acta Oncologica

Supplementary figure 1: Standard 5-years surveillance program for CSI seminoma patients in Denmark

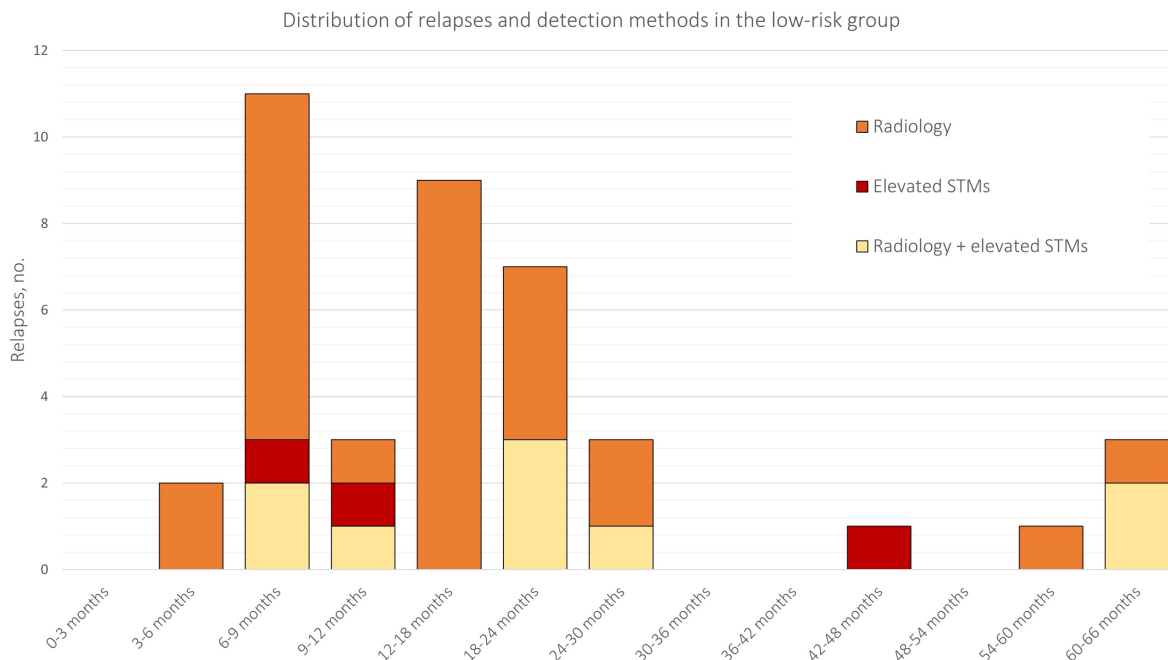
Abbreviations: CSI, clinical stage I; CT, computed tomography; MRI: magnetic resonance imaging; LDH, lactate dehydrogenase; AFP, alpha fetoprotein; β -hCG, β -human chorionic gonadotropin; LH, luteinizing hormone

	Month															
	2	4	6	8	10	12	15	18	21	24	30	36	42	48	54	60
CSI seminoma	In person visits with a physical examination	•	•	•	•	•	•	•	•	•	•	•	•	•	•	•
	Blood tests	•	•	•	•	•	•	•	•	•	•	•	•	•	•	•
	Radiology (CT or MRI of the abdomen and thorax)			•			•		•		•		•			•

Blood tests: • β -hCG, AFP and LDH, • β -hCG, AFP, LDH, total testosterone, free testosterone and LH

Supplementary figure 2: Distribution of relapses and their detection methods throughout the surveillance program in the low-risk group: 3-month intervals in the first year, followed by 6-month intervals thereafter

Abbreviation: STMs, serum tumor markers



Supplementary figure 3: Distribution of relapses and their detection methods throughout the surveillance program in the non-low-risk group: 3-month intervals in the first year, followed by 6-month intervals thereafter

Abbreviation: STMs, serum tumor markers

