

Supplementary material has been published as submitted. It has not been copyedited, or typeset by Acta Oncologica

Supplementary material

Figure S1: Pattern of rectal bleeding frequency for individual patients. Vertical line indicate median follow up.

BL: baseline, EOT: end of treatment, m: months w: weeks

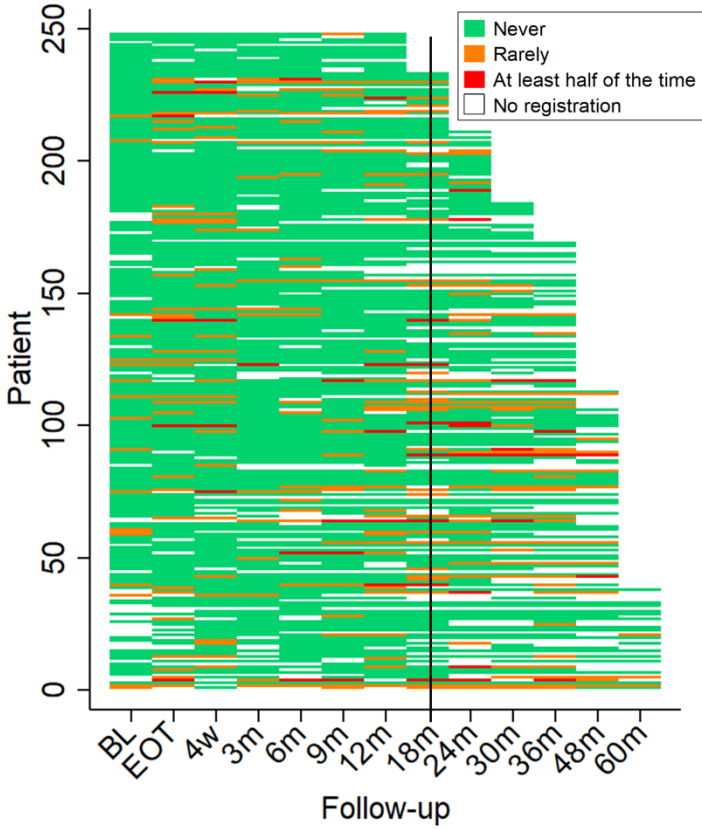


Figure S2: Findings from endoscopy (colonoscopy and sigmoidoscopy) for patients reporting rectal bleeding.

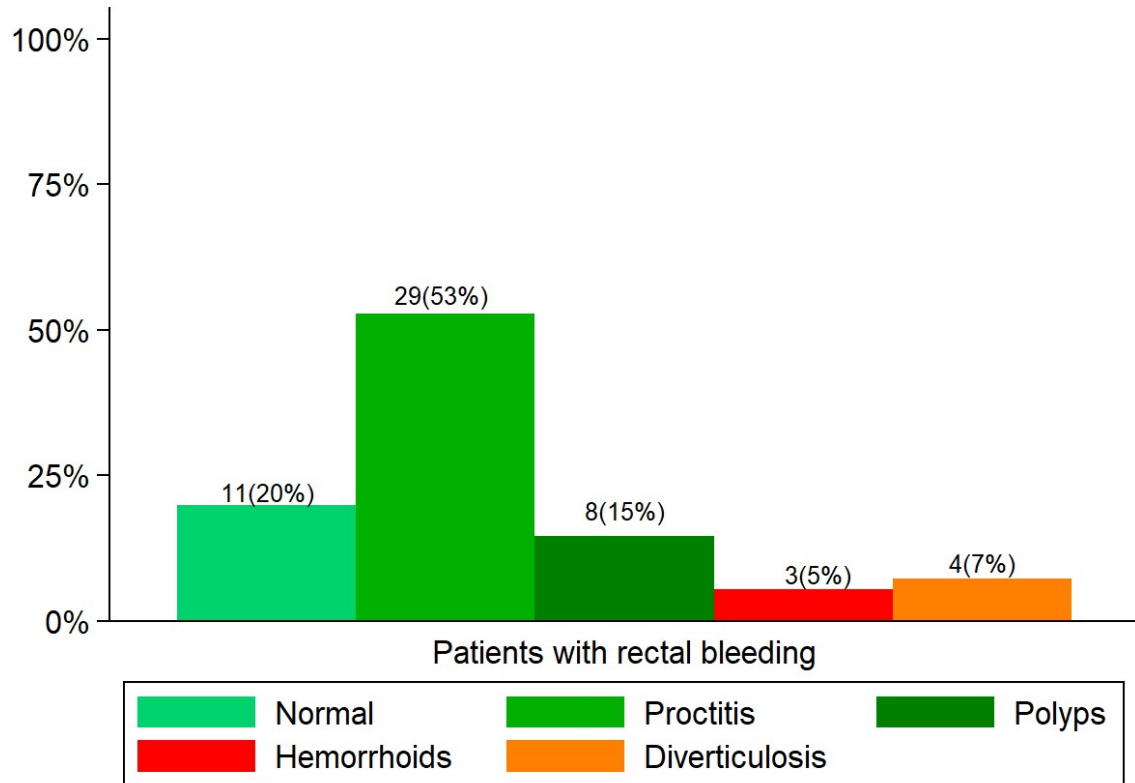


Table S1. All individual registrations of patient reported rectal bleeding with corresponding clinical bother (EPIC item 15e), i.e., patients are present >1 time.

	Problem					
	no problem	tiny	little	moderate	huge	Total
Bleeding, n(%)						
Never	N/A	N/A	N/A	N/A	N/A	N/A
Rarely	96 (38)	102 (41)	44(18)	8(3)	0	250
Half of the time	2 (4)	9(19)	13(27)	22(46)	2(4)	48
Usually	0	0	3(18)	8(47)	6(35)	17
Always	4(27)	0	0	2(18)	6(55)	11
						Pearson's $\chi^2 = 232.5$ $p < .001$