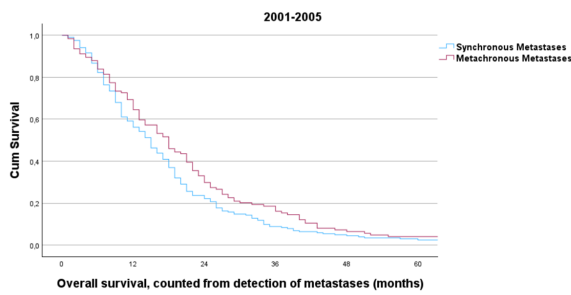


Figure S1. Overall survival for patients with synchronous or metachronous CRC metastases 2001 – 2015, receiving primary palliative chemotherapy only, stratified by 5-year periods. a) 2001-2005, log-rank  $p=0.051$ , b) 2006-2010, log-rank  $p=0.003$ , and c) 2011-2015, log-rank,  $p=0.094$ . Global log-rank,  $p<0.001$

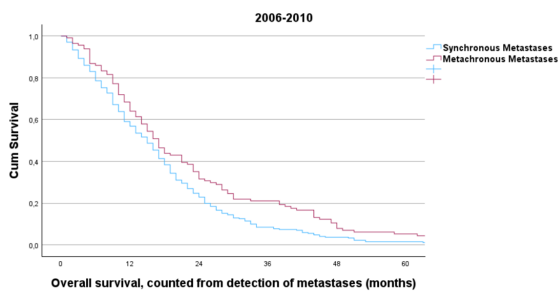
a)



Number at risk

|              |     |     |    |    |   |   |
|--------------|-----|-----|----|----|---|---|
| Synchronous  | 197 | 113 | 44 | 17 | 9 | 5 |
| Metachronous | 124 | 79  | 36 | 19 | 7 | 4 |

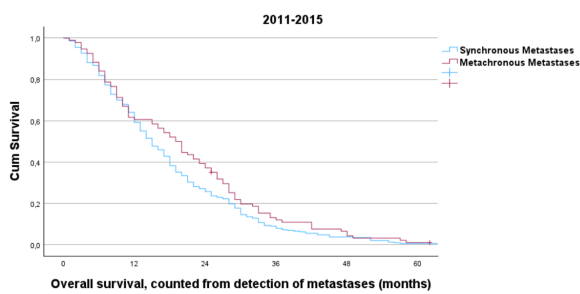
b)



Number at risk

|              |     |     |    |    |   |   |
|--------------|-----|-----|----|----|---|---|
| Synchronous  | 257 | 150 | 61 | 22 | 9 | 3 |
| Metachronous | 114 | 72  | 35 | 23 | 8 | 5 |

c)



Number at risk

|              |     |     |    |    |    |   |
|--------------|-----|-----|----|----|----|---|
| Synchronous  | 272 | 166 | 73 | 22 | 10 | 1 |
| Metachronous | 95  | 56  | 34 | 10 | 3  | 0 |