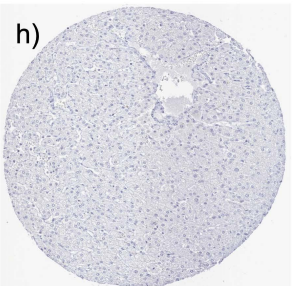
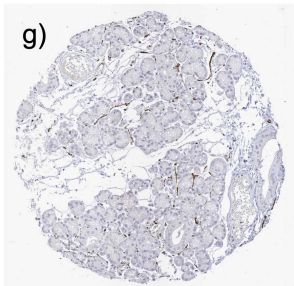
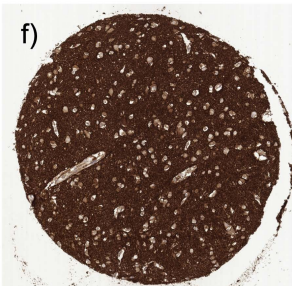
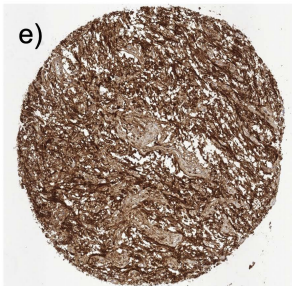
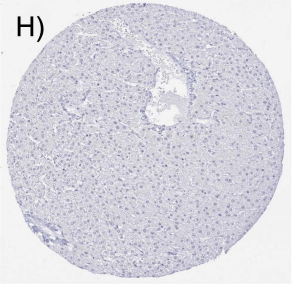
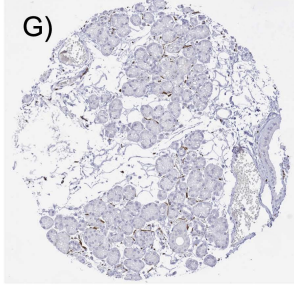
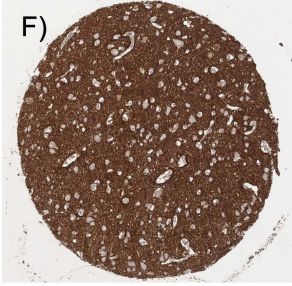
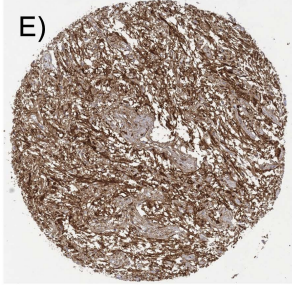
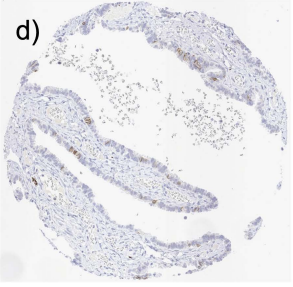
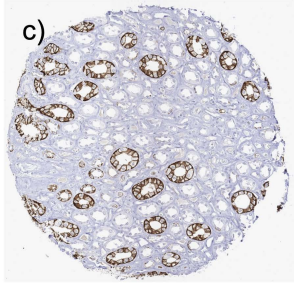
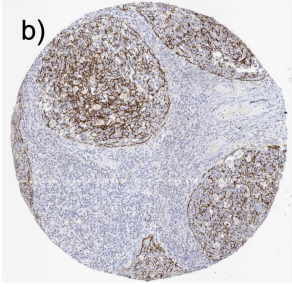
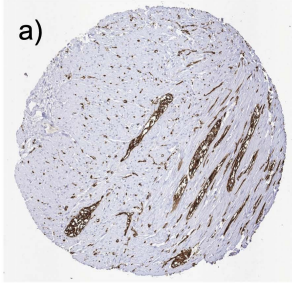
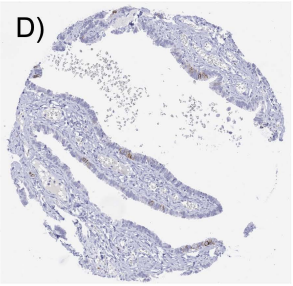
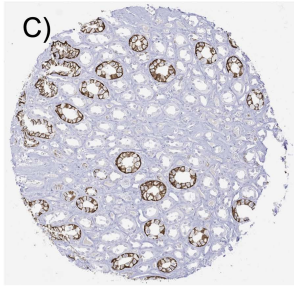
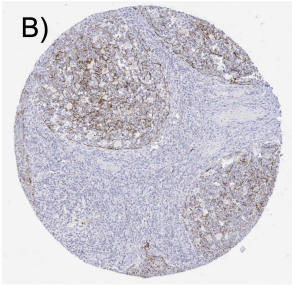
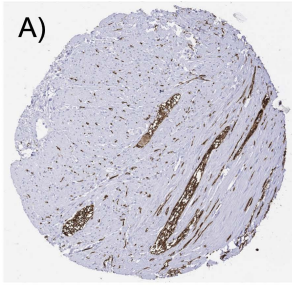


**Supplementary material has been published as submitted. It has not been copyedited, or typeset by Acta Oncologica**

*Supplementary Figure 1: Assay validation by comparison of two antibodies. The panel shows immunostaining results obtained by two independent L1CAM antibodies. Using MSVA-171R, immunostaining was seen in the nerve fibers of appendix muscular wall (A), subsets of B-cells and monocytic cells of tonsil (B), a subset of collecting duct cells of kidney medulla (C), a small subset of the epithelial cells of the fallopian tube (D), the posterior lobe of the pituitary gland (E), and the grey matter of the cerebrum (F), whereas no staining was seen in the submandibular gland (except nerve fibers) (G), and the liver (H). Using clone 14.10, a comparable staining was seen in the appendix muscular wall (a), tonsil (b), kidney (c), fallopian tube (d), pituitary gland (e), cerebrum (f), submandibular gland (g) and the liver (h). The images A-H and a-h are from consecutive tissue sections.*



Supplementary Table 3: LICAM immunostaining in previous studies

Author & Year	Pubmed ID	Tumor entity	Number of tumors	Positive
Vang 2023	3659274	Endometrial carcinoma, high grade, G3	64	27.80%
Harsany 2022	3529668	Endometrial cancer	378	27.40%
Joe 2023	3783593	Endometrial cancer	183	10.40%
Kim 2023	3723632	Endometrial endocervical carcinoma	140	9.90%
Asano 2020	3179276	Endometrial cancer	161	29.80%
Corrado 2018	2998040	Endometrial cancer	113	70.00%
Ramosova 2023	3752517	Squamous cell carcinoma of the cervix	154	15.60%
Kim 2023	3825596	Oral squamous cell carcinoma (floor of the mouth)	49	32.50%
Masale 2023	3711636	Endometrial cancer	80	28.50%
Lopes da Silva 2023	3720023	Carcinocarcinoma of the uterus	57	36.10%
Zeller 2021	3465939	Endometrial cancer	212	19.30%
Paulo M Inacora de Carvalho 2020	3236939	Adenocarcinoma of the cervix	26	50.00%
Paulo M Inacora de Carvalho 2020	3236939	Squamous cell carcinoma of the cervix	45	15.00%
Vin God 2016	2674347	Endometrial carcinoma, high grade, G3	186	44.00%
Smogół 2016	2748857	Endometrial cancer	388	9.00%
Schama 2013	2363079	Endometrial cancer	5	100.00%
Yoon 2024	3839939	Endometrial cancer	335	10.40%
Vukobratovic 2021	3435620	Endometrial cancer	249	7.20%
Vukobratovic 2022	3435621	Squamous cell carcinoma of the cervix	249	11.60%
Bergmann 2010	2081150	Ductal adenocarcinoma of the pancreas	110	92.70%
Mohoro 2016	2723307	Endometrial cancer	50	20.00%
Veršič 2018	3014098	Carcinocarcinoma of the uterus	81	65.40%
Liska 2021	3594833	Pancreas, neuroendocrine tumor (NET)	29	7.00%
Romani 2022	3542938	Endometrial carcinoma, high grade, G3	55	47.00%
Veser 2021	3441847	Endometrial endocervical carcinoma	302	4.30%
Zeman 2013	2378104	Endometrial cancer	1021	17.70%
Di S. Sallio 2023	3747875	Stromal carcinoma of the ovary	644	94.70%
Chopra 2024	3892485	Adenocarcinoma of the cervix	50	38.30%
Chopra 2025	3906749	Squamous cell carcinoma of the cervix	214	13.30%
Adam 2022	3666622	Ductal adenocarcinoma of the pancreas	62	63.00%
Rojas 2020	3241304	Endometrial cancer	763	10.40%
Yu 2019	3193496	Adenocarcinoma of the lung	72	31.94%
Yu 2020	3193497	Squamous cell carcinoma of the lung	50	40.00%
Mozzo 2022	3614266	Malignant melanoma	47	96.00%
Loikova 2024	3897263	Endometrial cancer	748	14.80%
Geels 2016	2689128	Endometrial endocervical carcinoma	92	7.60%
Soovares 2022	3471141	Endometrial carcinoma of the ovary	201	12.4%
Minkler 2007	1708572	Ductal adenocarcinoma of the pancreas	20	80.00%
Kim 2023	3779754	Papillary renal cell carcinoma	43	100.00%
Tsubomi 2011	2136071	Ductal adenocarcinoma of the pancreas	107	21.50%
Kim 2019	3059189	Endometrial cancer	312	29.80%
Bosse 2014	2512622	Endometrial cancer	895	7.00%
Sak 2014	2533793	Endometrial cancer	68	19.10%
Adam 2022	3529632	Oral squamous cell carcinoma (floor of the mouth)	100	41.00%
Soovares 2017	2825395	Endometrial endocervical carcinoma	249	15.00%
Soovares 2017	2825395	Clear cell carcinoma of the ovary	140	23.00%
Nová-Camacho 2023	36170616	Papillary renal cell carcinoma	8	100.00%
de Freitas 2018	3065739	Endometrial endocervical carcinoma	47	17.00%
Kamoz 2018	3009954	Endometrial cancer	452	21.50%
Ranaq 2022	3635884	Endometrial carcinoma, high grade, G3	94	30.00%
Yamazaki 2022	3570783	Endometrial cancer	123	18.60%
Yamazaki 2022	3570783	Endometrial carcinoma, high grade, G3	26	42.30%
Yamazaki 2022	3570783	Endometrial stromal carcinoma	9	77.7%
Yamazaki 2022	3570783	Endometrial clear cell carcinoma	1	62.50%
Máscová 2023	3685696	Stromal carcinoma of the ovary	250	24.40%
Kim 2012	2247215	Anaplastic thyroid carcinoma	9	100.00%
Kim 2020	3233170	Endometrial clear cell carcinoma	48	60.40%
Pereira 2020	3206037	Endometrial endocervical carcinoma	657	9.2%
Santos-Arroyo 2016	2764851	Invasive breast carcinoma of no special type	21	44.00%
Vrde 2021	3385877	Endometrial cancer	763	10.40%
Heath 2018	2948692	Endometrial endocervical carcinoma	305	6.60%
Al Obeidi 2019	31135486	Papillary renal cell carcinoma	18	44.44%
Ferreira 2024	3843056	Endometrial cancer	236	3.3%
Yamada 2022	3468867	Thyoma	94	0.00%
Ramaq 2005	1941434	Adenocarcinoma of the esophagus	196	16.3%
Ramaq 2009	1941434	Squamous cell carcinoma of the esophagus	141	2.1%
Ramaq 2012	2119542	Squamous cell carcinoma of the cervix	44	2.00%
Ramaq 2012	2119542	Chondrosarcoma	11	18.00%
Ramaq 2012	2119542	Adenocarcinoma of the esophagus	186	16.00%
Ramaq 2012	2119542	Squamous cell carcinoma of the esophagus	141	2.00%
Ramaq 2012	2119542	Gastrointestinal stromal tumor (GIST)	103	56.00%
Ramaq 2012	2119542	Giant cell tumor	28	93.00%
Ramaq 2012	2119542	Kaposi sarcoma	30	33.00%
Ramaq 2012	2119542	Liposarcoma	129	7.00%
Ramaq 2012	2119542	Liposarcoma	109	7.00%
Ramaq 2012	2119542	Malignant melanoma	50	24.00%
Ramaq 2012	2119542	Sarcoma	54	20.00%
Ramaq 2012	2119542	Mesothelioma, epithelial	28	4.00%
Ramaq 2012	2119542	Neurofibroma	43	2.00%
Ramaq 2012	2119542	Ductal adenocarcinoma of the pancreas	181	2.00%
Ramaq 2012	2119542	Pancreas, neuroendocrine tumor (NET)	63	8.00%
Min 2010	20501614	Cholangiosarcoma	42	57.14%
Guo 2012	2288935	Hepatocellular carcinoma	130	63.08%
Grewal 2005	15716380	Adenocarcinoma of the colon	25	0.00%
Rao 2010	2016245	Ductal adenocarcinoma of the pancreas	94	35.20%
Li 2005	1952040	Cholangiosarcoma	75	42.70%
Lee 2010	1986598	Malignant melanoma	173	62.00%
Wedalocler 2023	3882510	Melanocarcinoma of the ovary	39	51.30%
Izagoma 2016	27419370	Sarcoma	74	100.00%
Izagoma 2016	27419370	Panepithelioma	67	97.00%
Izagoma 2016	27419370	Mixed cell carcinoma	27	85.20%
Izagoma 2016	27419370	Pancreas, neuroendocrine tumor (NET)	42	83.30%
Izagoma 2016	27419370	Neurofibroma	38	73.30%
Izagoma 2016	27419370	Malignant melanoma	88	64.80%
Izagoma 2016	27419370	Malignant peripheral nerve sheath tumor (MPNST)	57	31.50%
Izagoma 2016	27419370	Malignant melanoma	65	30.80%
Izagoma 2016	27419370	Malignant melanoma	27	29.60%
Izagoma 2016	27419370	Sarcoma	38	94.70%
Izagoma 2016	27419370	Malignant melanoma	42	66.70%
Izagoma 2016	27419370	Malignant melanoma	64	57.80%
Izagoma 2016	27419370	Rhabdomyosarcoma	42	50.00%
Izagoma 2016	27419370	Angiosarcoma	97	35.10%
Izagoma 2016	27419370	Rhabdomyosarcoma	55	14.50%
Izagoma 2016	27419370	Synovial sarcoma	34	8.80%
Izagoma 2016	27419370	Kaposi sarcoma	35	0.00%
Izagoma 2016	27419370	Solitary fibrous tumor	28	0.00%
Izagoma 2016	27419370	Gastrointestinal stromal tumor (GIST)	1300	1.50%
Izagoma 2016	27419370	Liposarcoma	29	17.20%
Izagoma 2016	27419370	Liposarcoma	45	6.70%
Izagoma 2016	27419370	Stromal carcinoma of the ovary	97	86.60%
Izagoma 2016	27419370	Mesothelioma, epithelial	183	69.30%
Izagoma 2016	27419370	Embryonal carcinoma of the testis	35	60.00%
Izagoma 2016	27419370	Adenocarcinoma of the colon	210	56.20%
Izagoma 2016	27419370	Endometrial cancer	97	33.00%
Izagoma 2016	27419370	Cholangiosarcoma	20	25.00%
Izagoma 2016	27419370	Papillary renal cell carcinoma	333	21.30%
Izagoma 2016	27419370	Urothelial carcinoma, pT1-4 G3	92	18.50%
Izagoma 2016	27419370	Squamous cell carcinoma of the lung	53	15.10%
Izagoma 2016	27419370	Sarcoma	71	14.10%
Izagoma 2016	27419370	Adrenal cortical carcinoma	31	12.90%
Izagoma 2016	27419370	Adenocarcinoma of the lung	52	7.70%
Izagoma 2016	27419370	Hypospadias adenoma of the parotid gland	114	6.10%
Izagoma 2016	27419370	Papillary thyroid carcinoma	58	5.20%
Izagoma 2016	27419370	Thyoma	62	4.80%
Izagoma 2016	27419370	Hepatocellular carcinoma	92	1.10%
Izagoma 2016	27419370	Yolk sac tumor	3	0.00%
Izagoma 2016	27419370	Lobular carcinoma of the breast	6	0.00%
Slavens 2019	30171498	Mesothelioma, epithelial	9	100.00%
Kali 2005	1640030	Gastrointestinal stromal tumor (GIST)	72	74.00%
Kali 2005	1640030	Liposarcoma	18	0.00%
Kali 2005	1640030	Liposarcoma	11	0.00%
Kali 2005	1640030	Dermatofibrosarcoma protuberans	21	0.00%
Kim 2009	19239435	Lung, neuroendocrine tumor (NET)	55	61.80%
Blessmann 2012	22677742	Neurofibroma	23	100.00%
Blessmann 2012	22677742	Neurofibroma	20	100.00%
Blessmann 2012	22677742	Malignant peripheral nerve sheath tumor (MPNST)	17	41.00%
Thies 2022	12175686	Malignant melanoma	100	42.00%