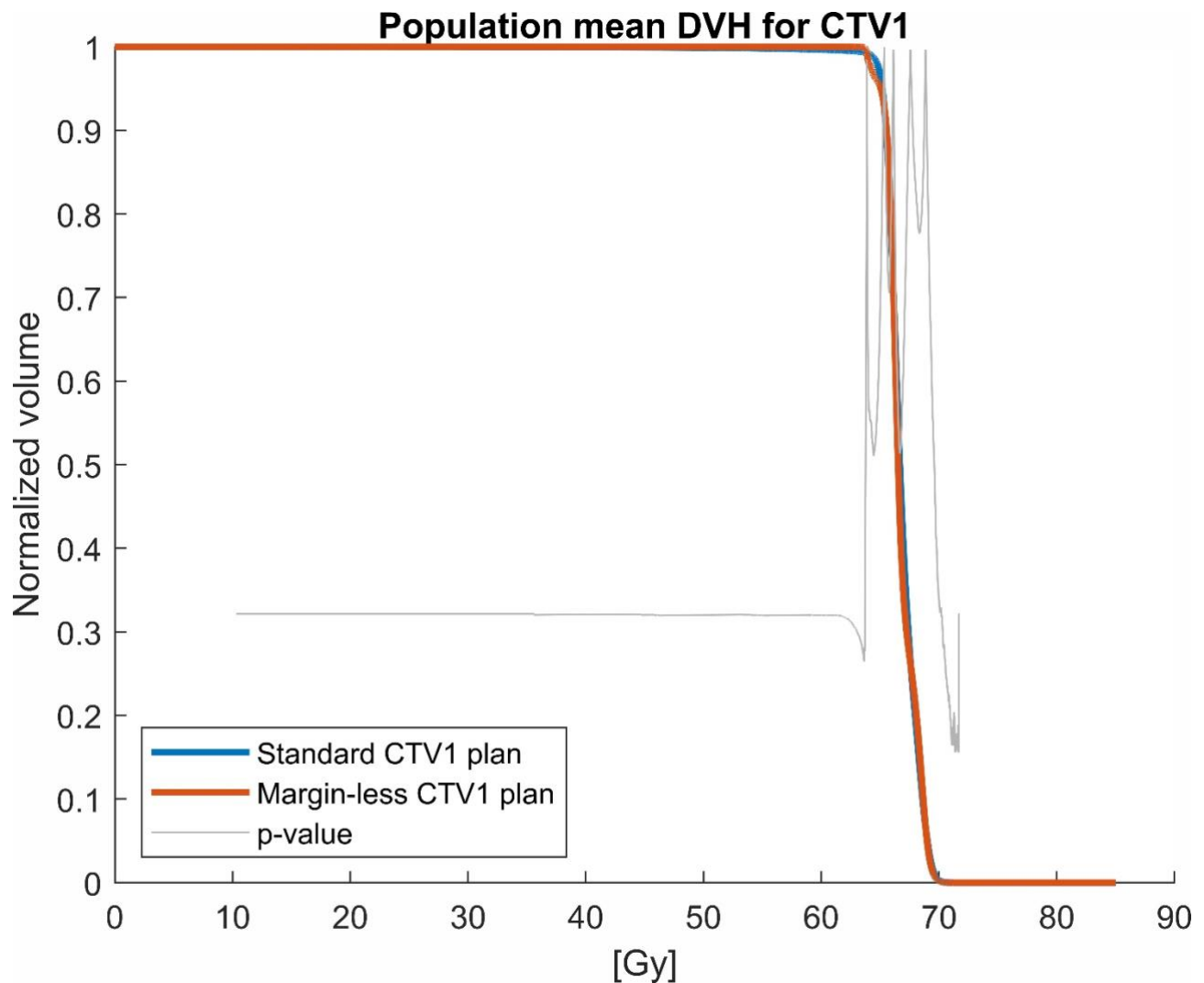


Supplementary material has been published as submitted. It has not been copyedited, or typeset by Acta Oncologica

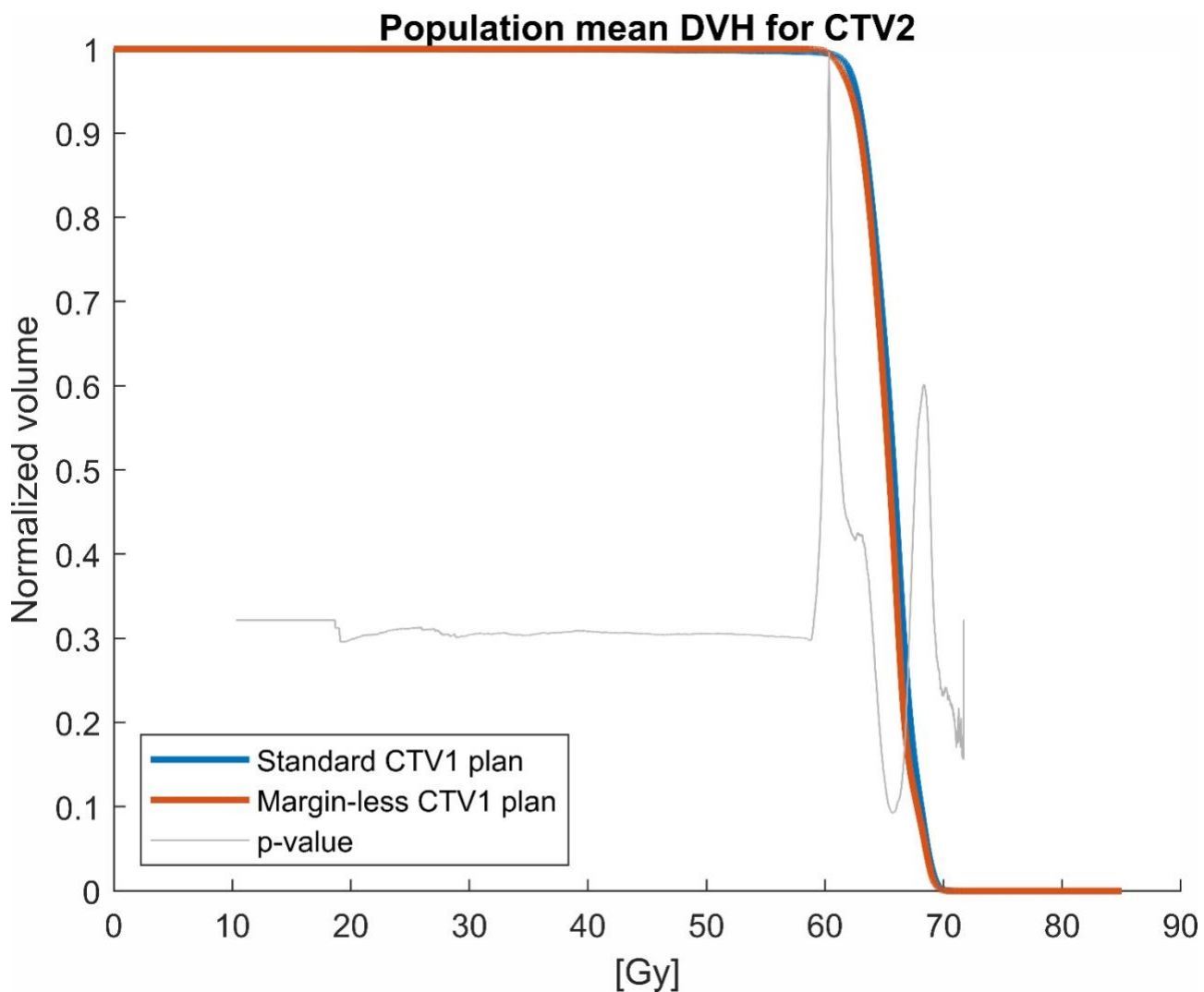
Appendix:

Figure 1



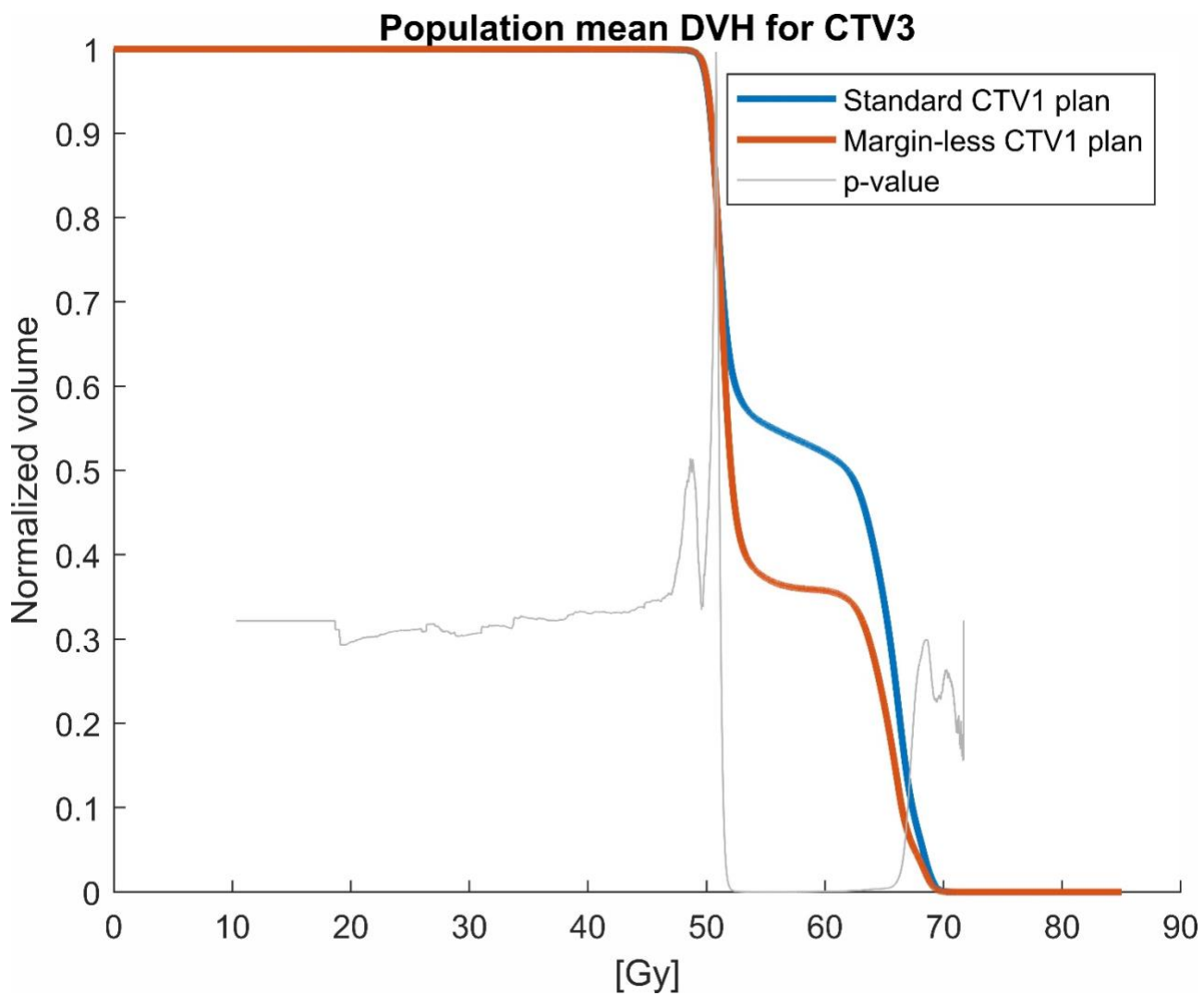
Population mean dose-volume histograms (DVHs) for selected target-adjacent structures comparing standard CTV1 plans (blue) and margin-less CTV1 plans (red). The margin-less strategy consistently reduces dose to surrounding tissues while maintaining target coverage. The gray curve represents dose-bin-wise p-values indicating statistically significant differences between the two plan types across the dose range.

Figure 2



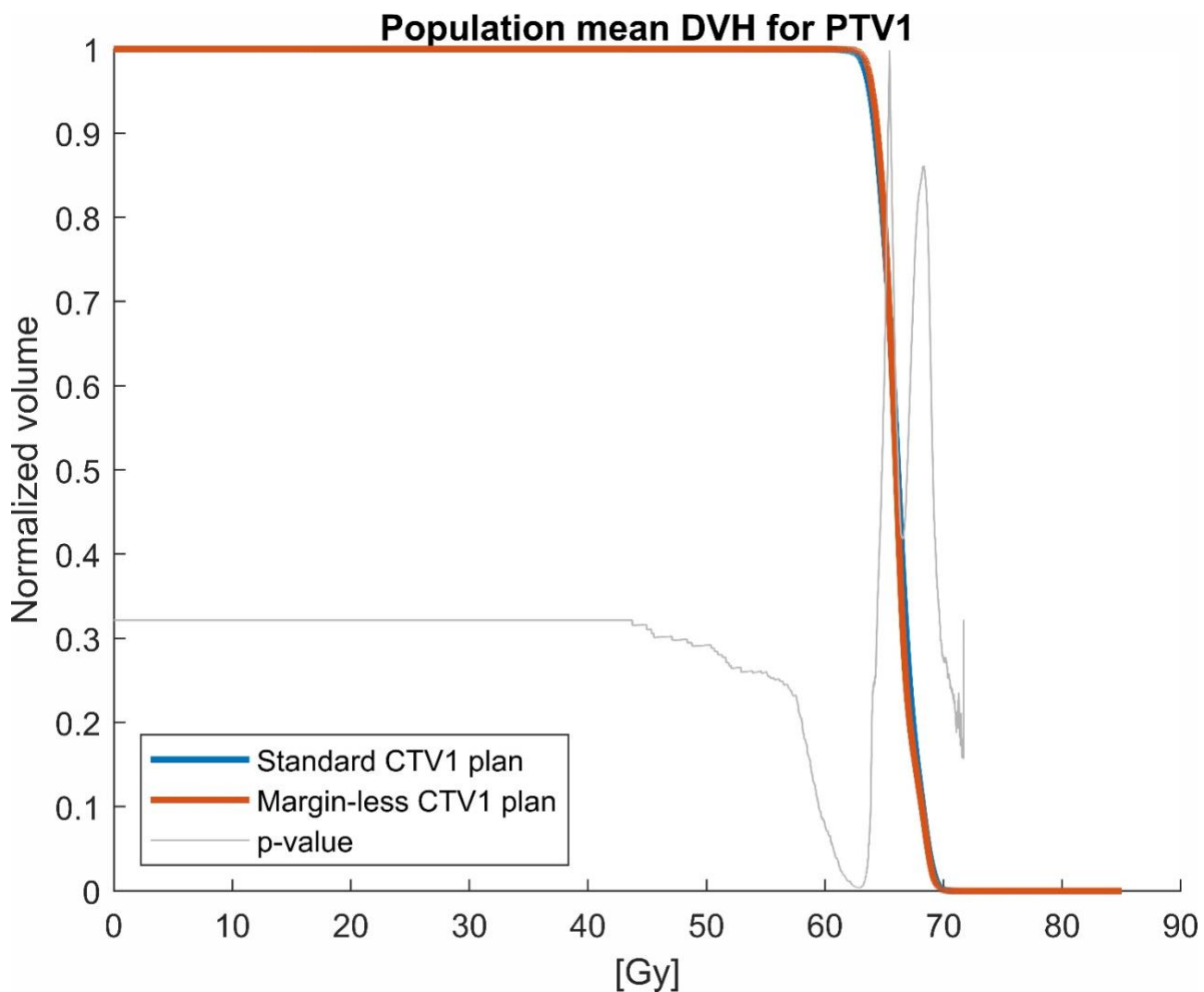
Population mean dose-volume histograms (DVHs) for selected target-adjacent structures comparing standard CTV1 plans (blue) and margin-less CTV1 plans (red). The margin-less strategy consistently reduces dose to surrounding tissues while maintaining target coverage. The gray curve represents dose-bin-wise p-values indicating statistically significant differences between the two plan types across the dose range.

Figure 3



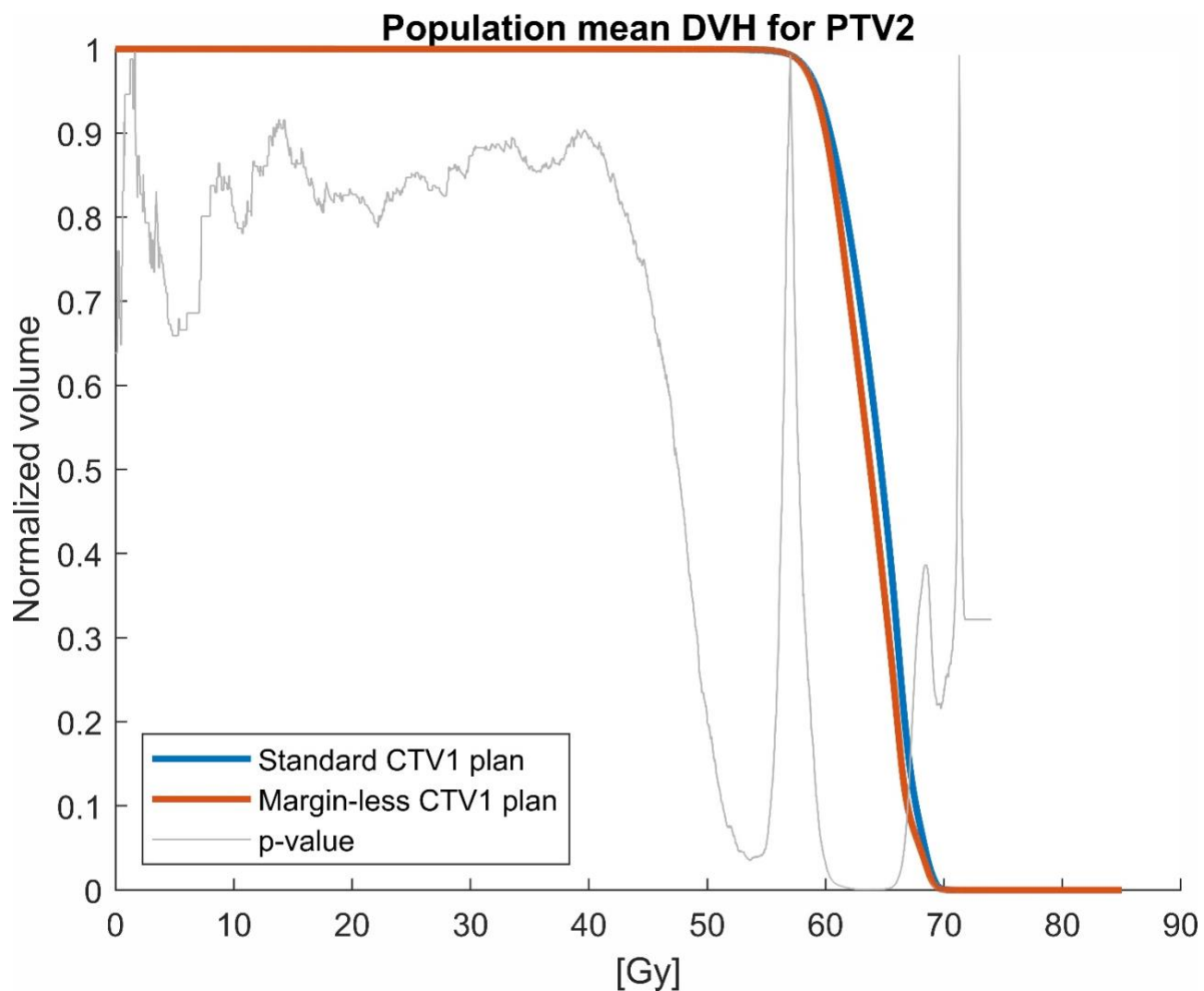
Population mean dose-volume histograms (DVHs) for selected target-adjacent structures comparing standard CTV1 plans (blue) and margin-less CTV1 plans (red). The margin-less strategy consistently reduces dose to surrounding tissues while maintaining target coverage. The gray curve represents dose-bin-wise p-values indicating statistically significant differences between the two plan types across the dose range.

Figure 4



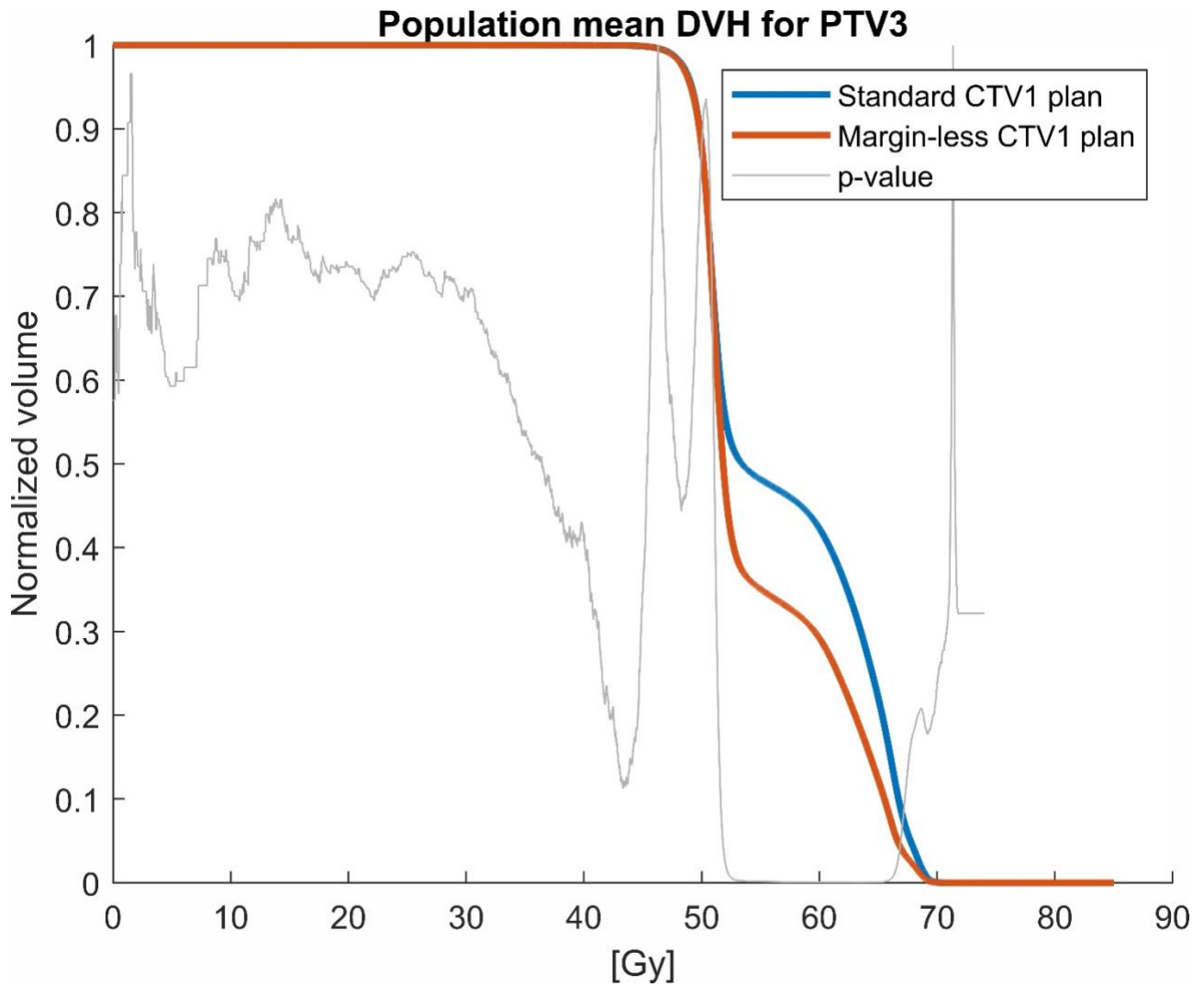
Population mean dose-volume histograms (DVHs) for selected target-adjacent structures comparing standard CTV1 plans (blue) and margin-less CTV1 plans (red). The margin-less strategy consistently reduces dose to surrounding tissues while maintaining target coverage. The gray curve represents dose-bin-wise p-values indicating statistically significant differences between the two plan types across the dose range.

Figure 5



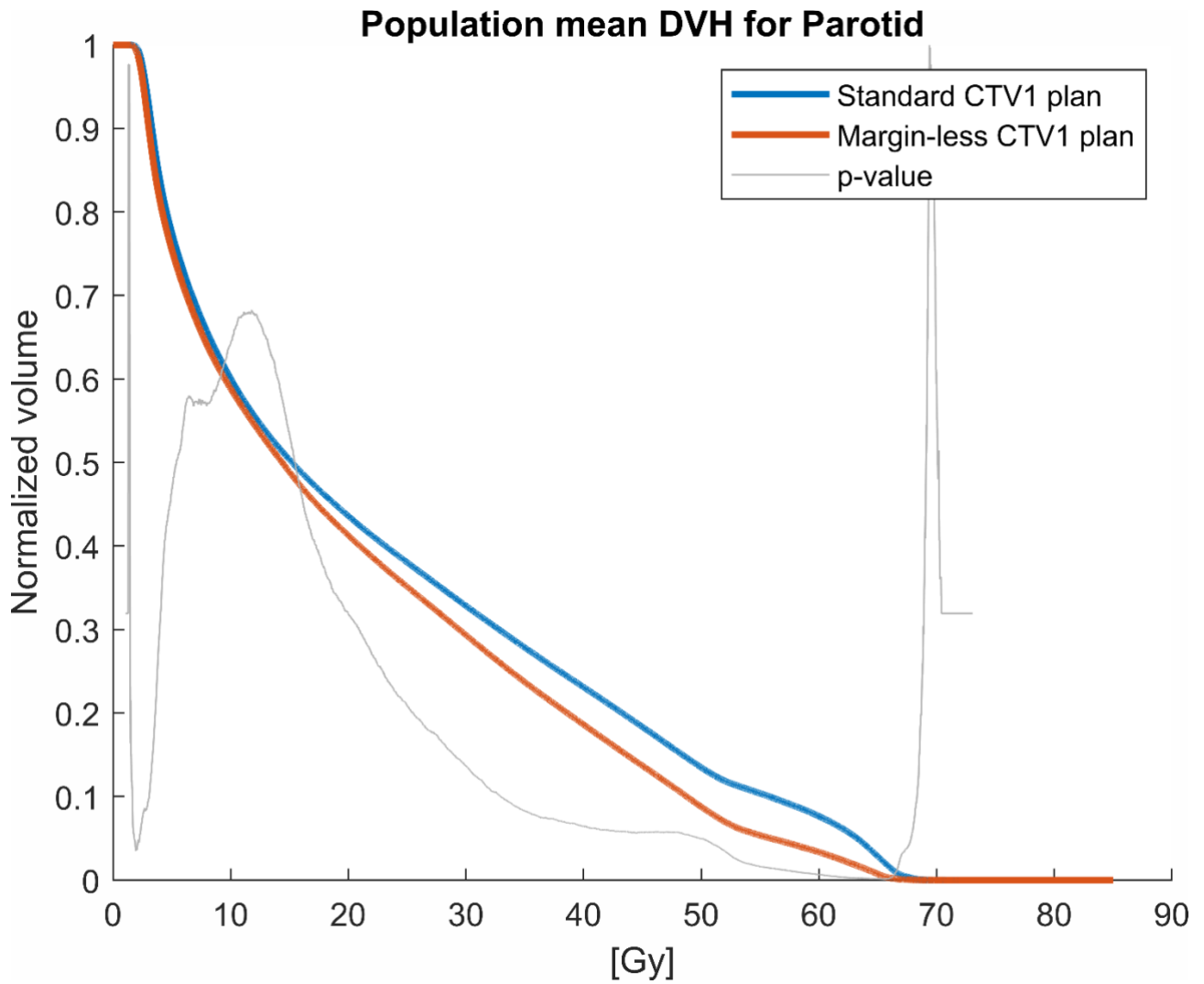
Population mean dose-volume histograms (DVHs) for selected target-adjacent structures comparing standard CTV1 plans (blue) and margin-less CTV1 plans (red). The margin-less strategy consistently reduces dose to surrounding tissues while maintaining target coverage. The gray curve represents dose-bin-wise p-values indicating statistically significant differences between the two plan types across the dose range.

Figure 6



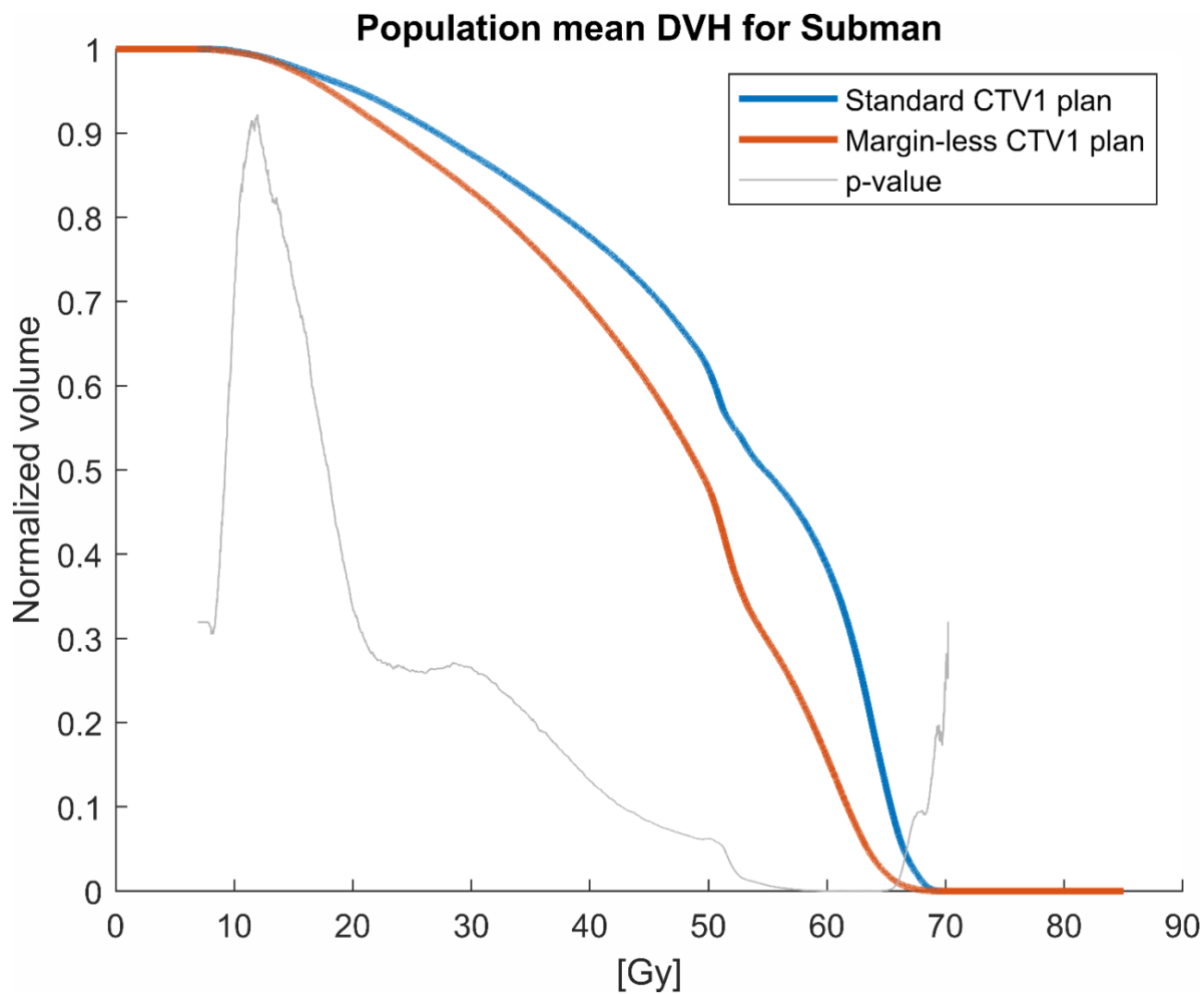
Population mean dose-volume histograms (DVHs) for selected target-adjacent structures comparing standard CTV1 plans (blue) and margin-less CTV1 plans (red). The margin-less strategy consistently reduces dose to surrounding tissues while maintaining target coverage. The gray curve represents dose-bin-wise p-values indicating statistically significant differences between the two plan types across the dose range.

Figure 7



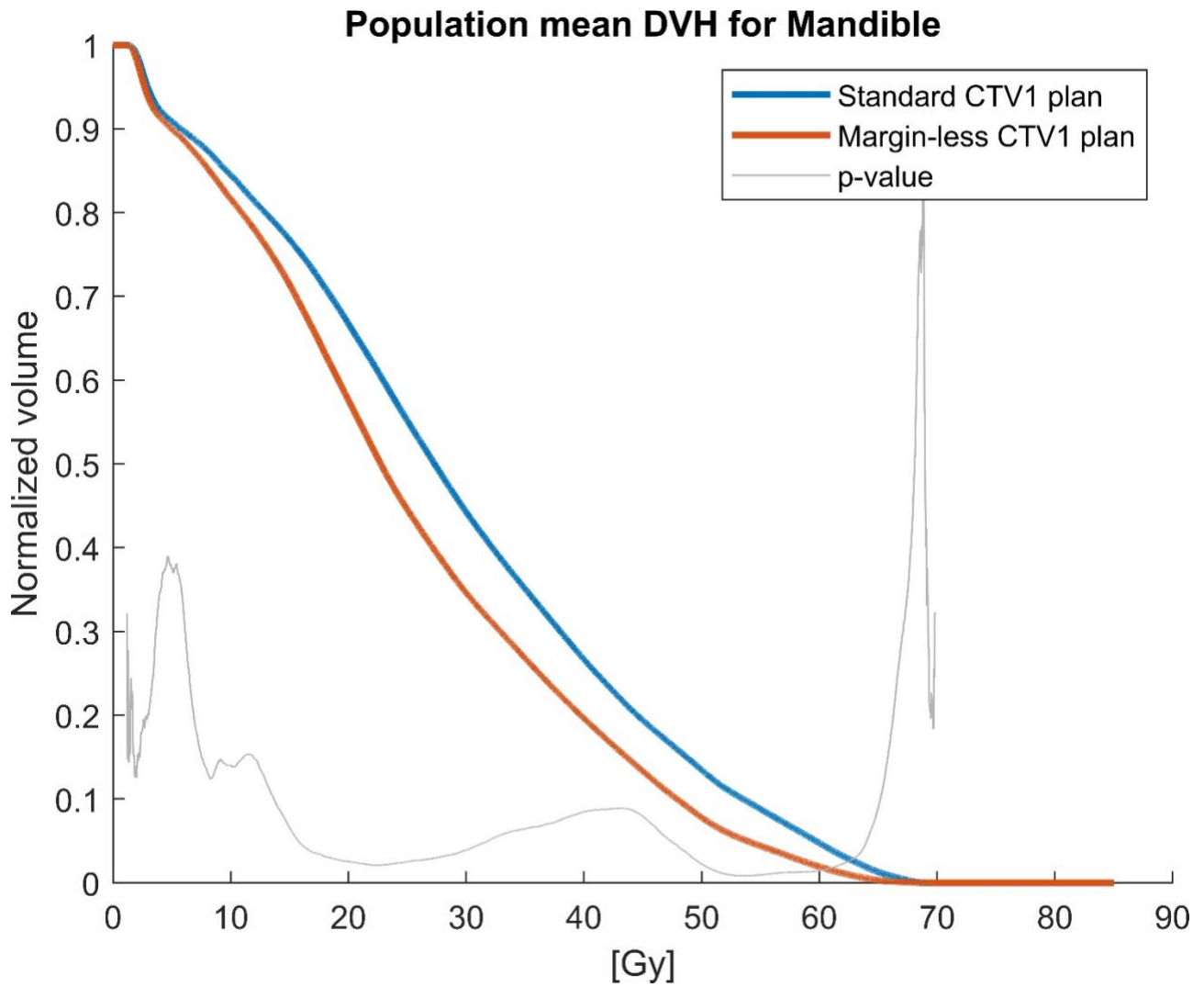
Population mean dose-volume histogram (DVH) for the [OAR name] comparing standard CTV1 plans (blue) and margin-less CTV1 plans (red). Dose-bin-wise p-values (gray) indicate statistically significant differences across relevant portions of the dose distribution.

Figure 8



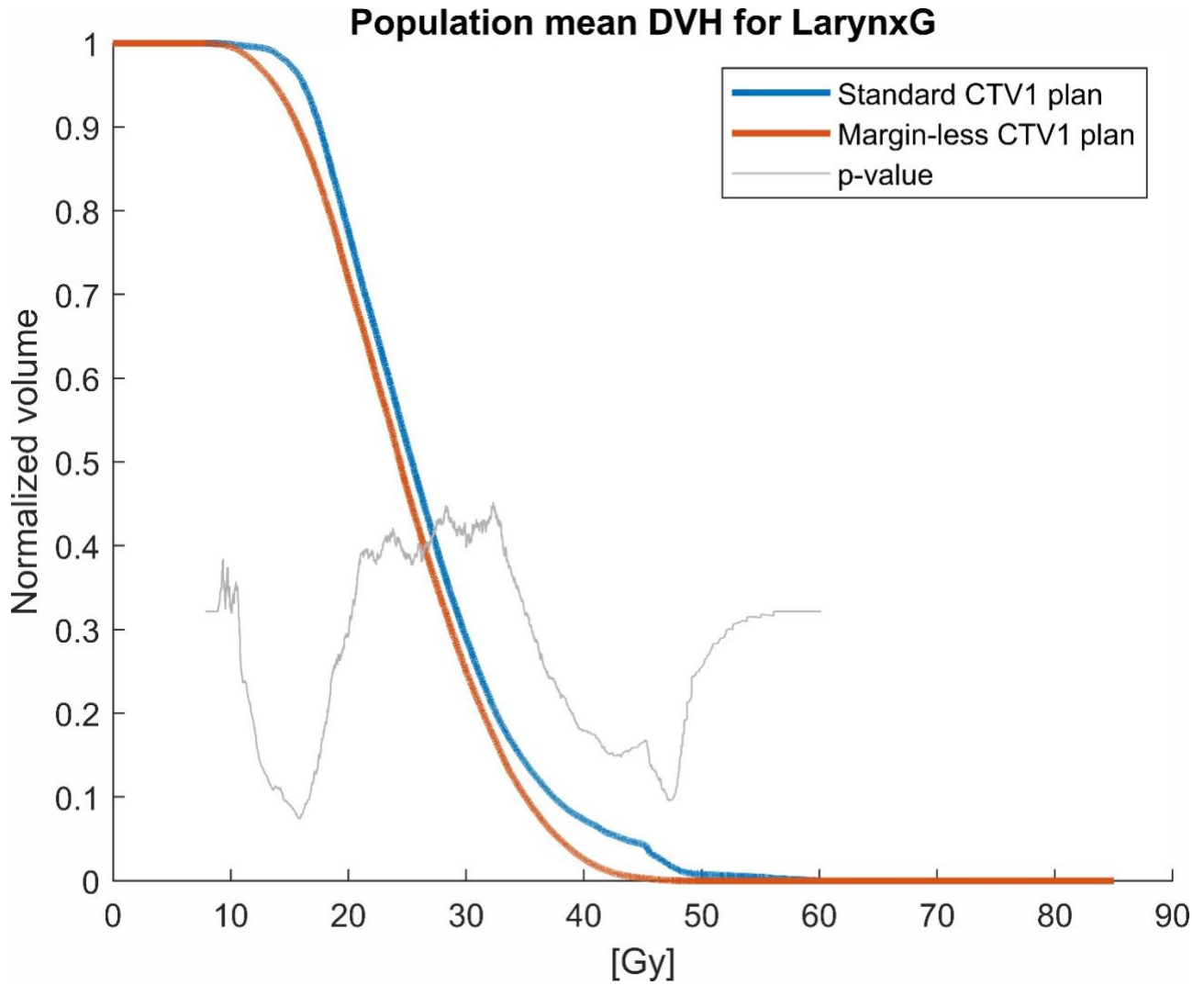
Population mean dose-volume histogram (DVH) for the [OAR name] comparing standard CTV1 plans (blue) and margin-less CTV1 plans (red). Dose-bin-wise p-values (gray) indicate statistically significant differences across relevant portions of the dose distribution.

Figure 9



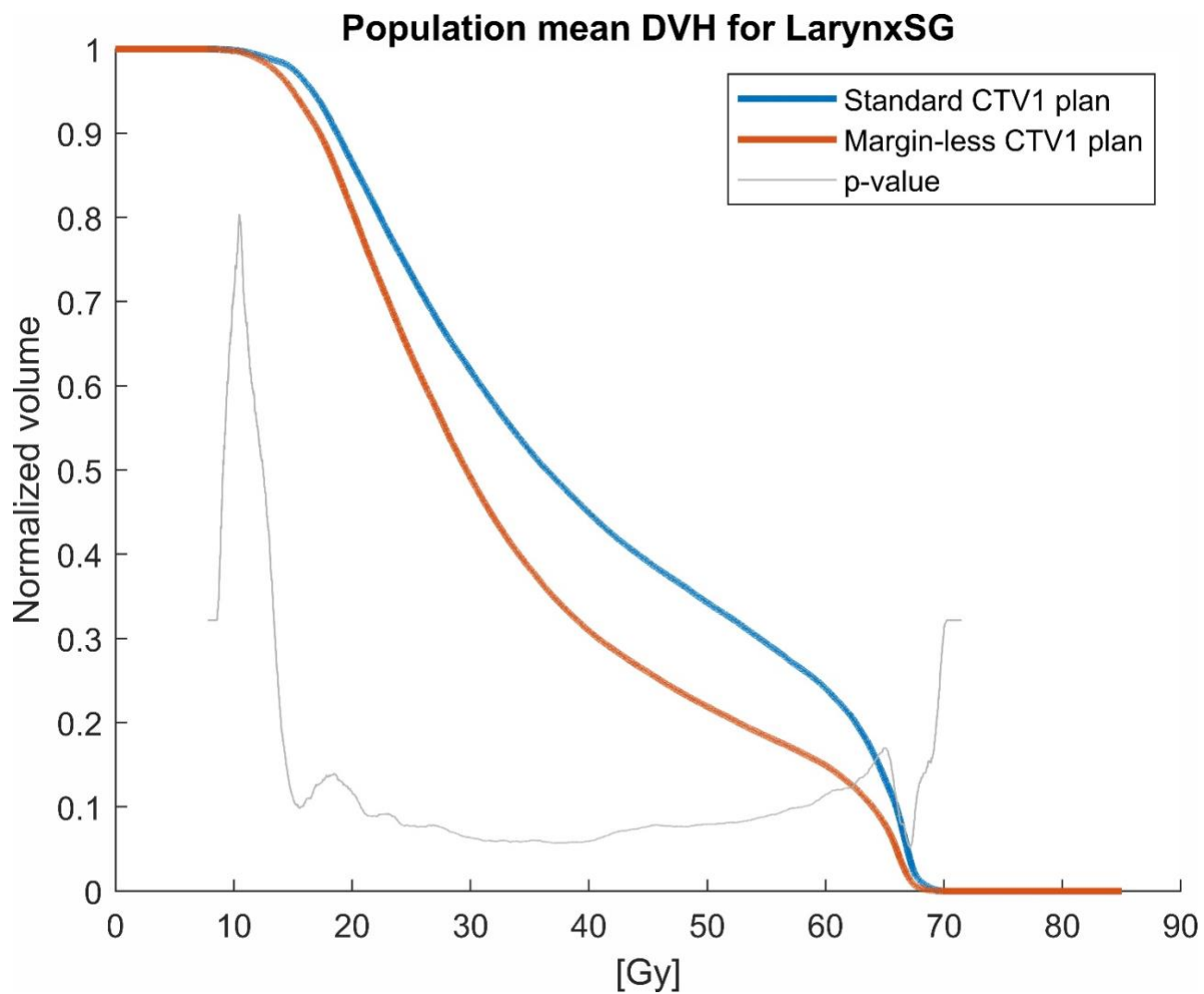
Population mean dose-volume histogram (DVH) for the [OAR name] comparing standard CTV1 plans (blue) and margin-less CTV1 plans (red). Dose-bin-wise p-values (gray) indicate statistically significant differences across relevant portions of the dose distribution.

Figure 10



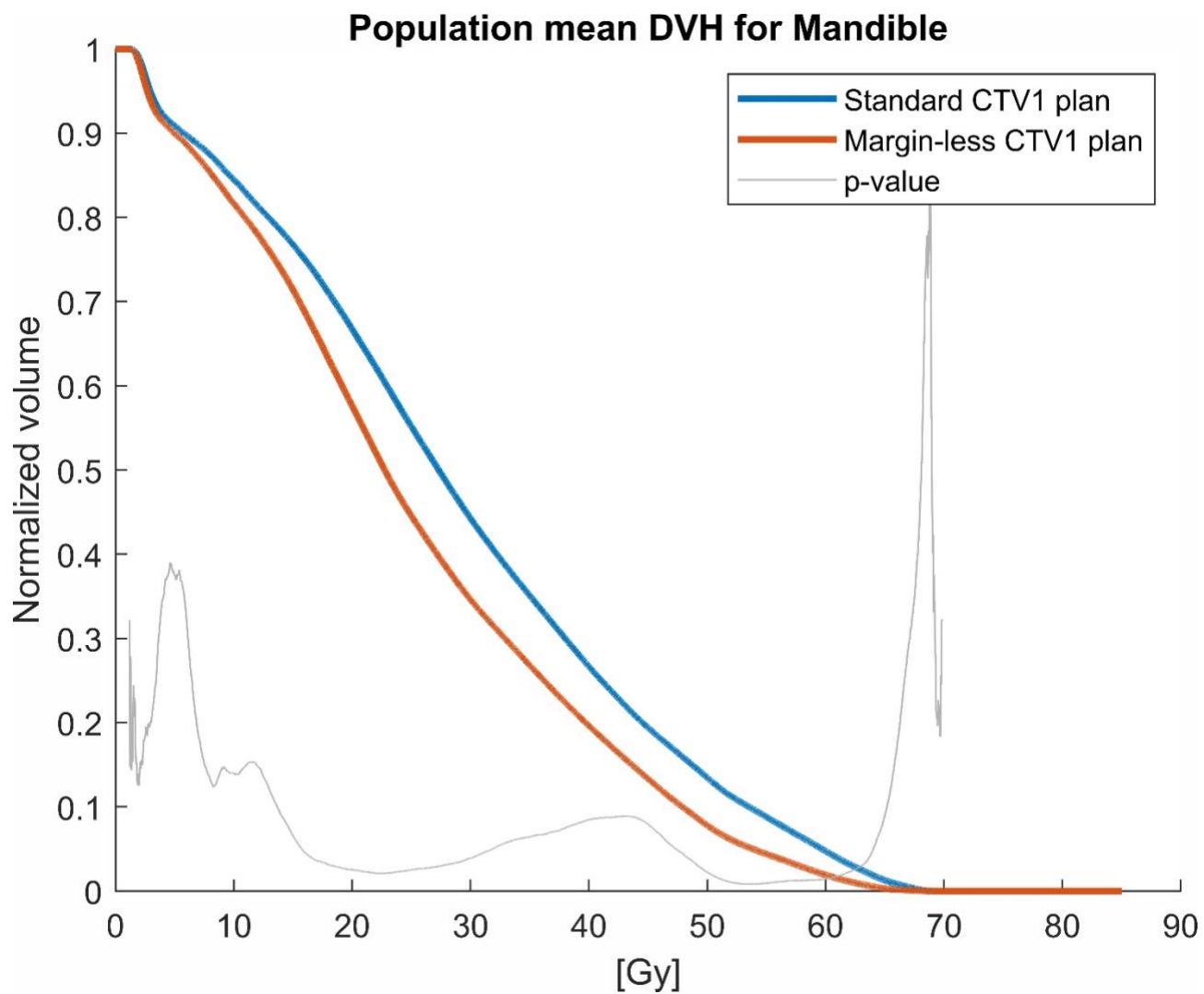
Population mean dose-volume histogram (DVH) for the [OAR name] comparing standard CTV1 plans (blue) and margin-less CTV1 plans (red). Dose-bin-wise p-values (gray) indicate statistically significant differences across relevant portions of the dose distribution.

Figure 11



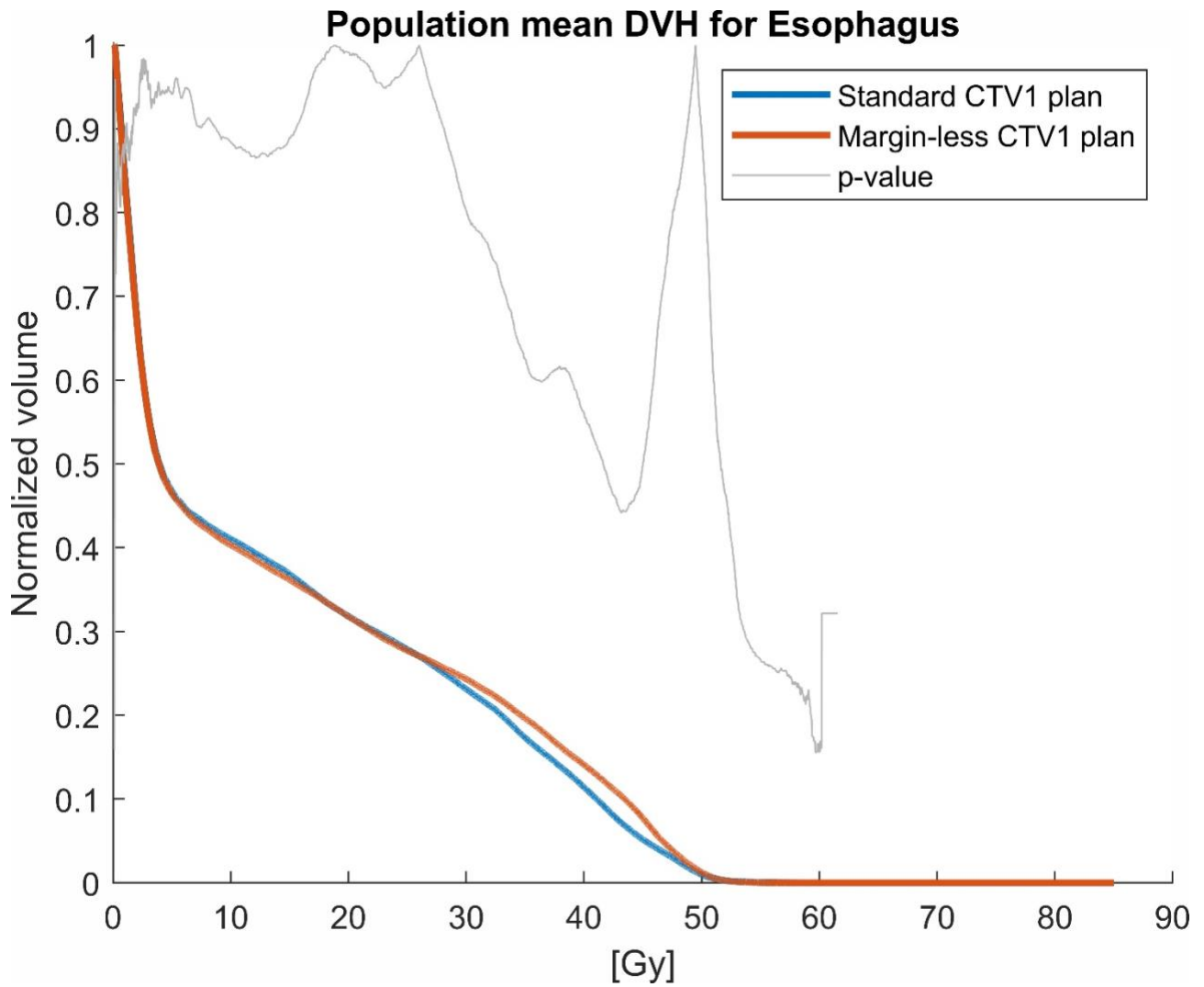
Population mean dose-volume histogram (DVH) for the [OAR name] comparing standard CTV1 plans (blue) and margin-less CTV1 plans (red). Dose-bin-wise p-values (gray) indicate statistically significant differences across relevant portions of the dose distribution.

Figure 12



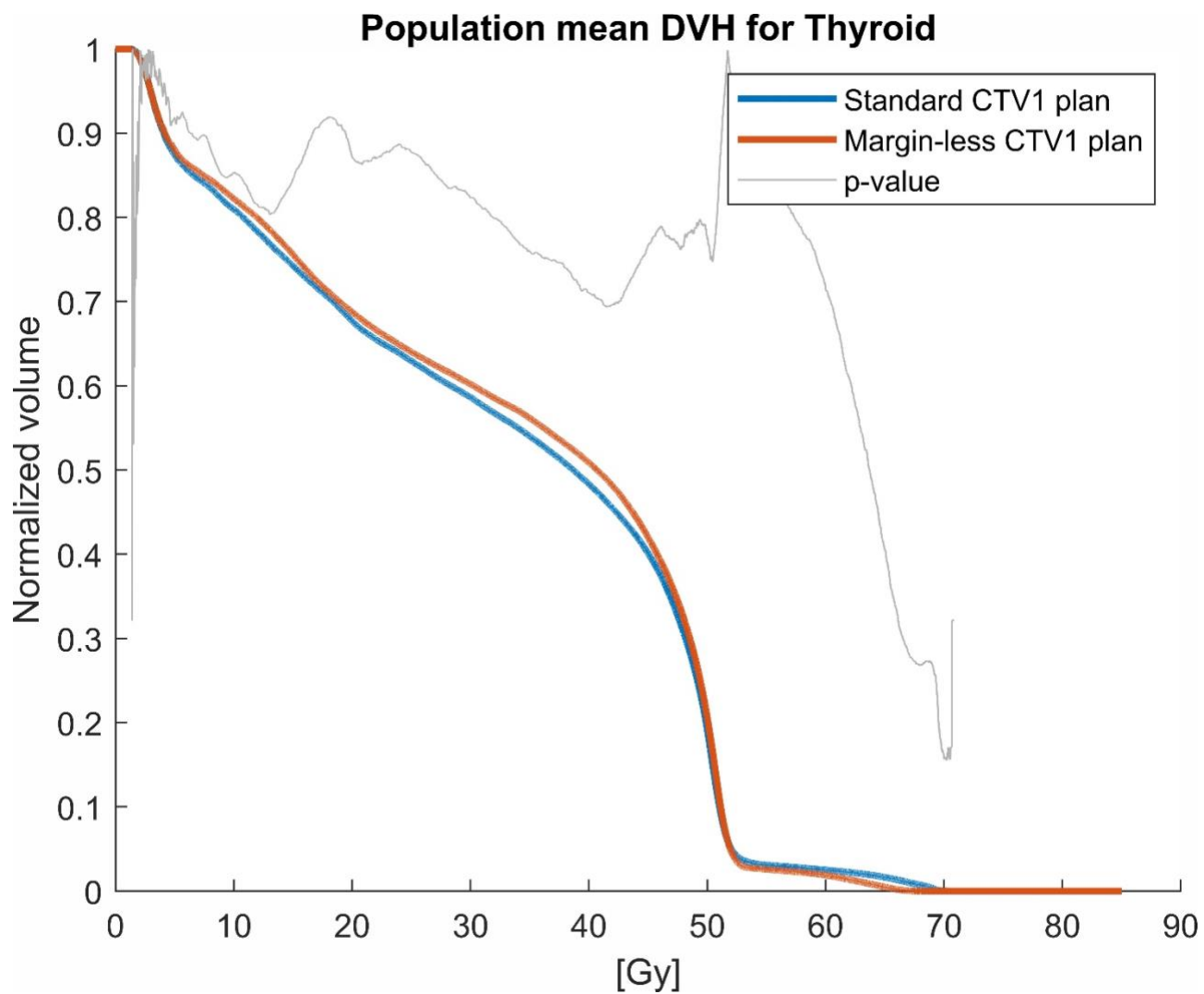
Population mean dose-volume histogram (DVH) for the [OAR name] comparing standard CTV1 plans (blue) and margin-less CTV1 plans (red). Dose-bin-wise p-values (gray) indicate statistically significant differences across relevant portions of the dose distribution.

Figure 13



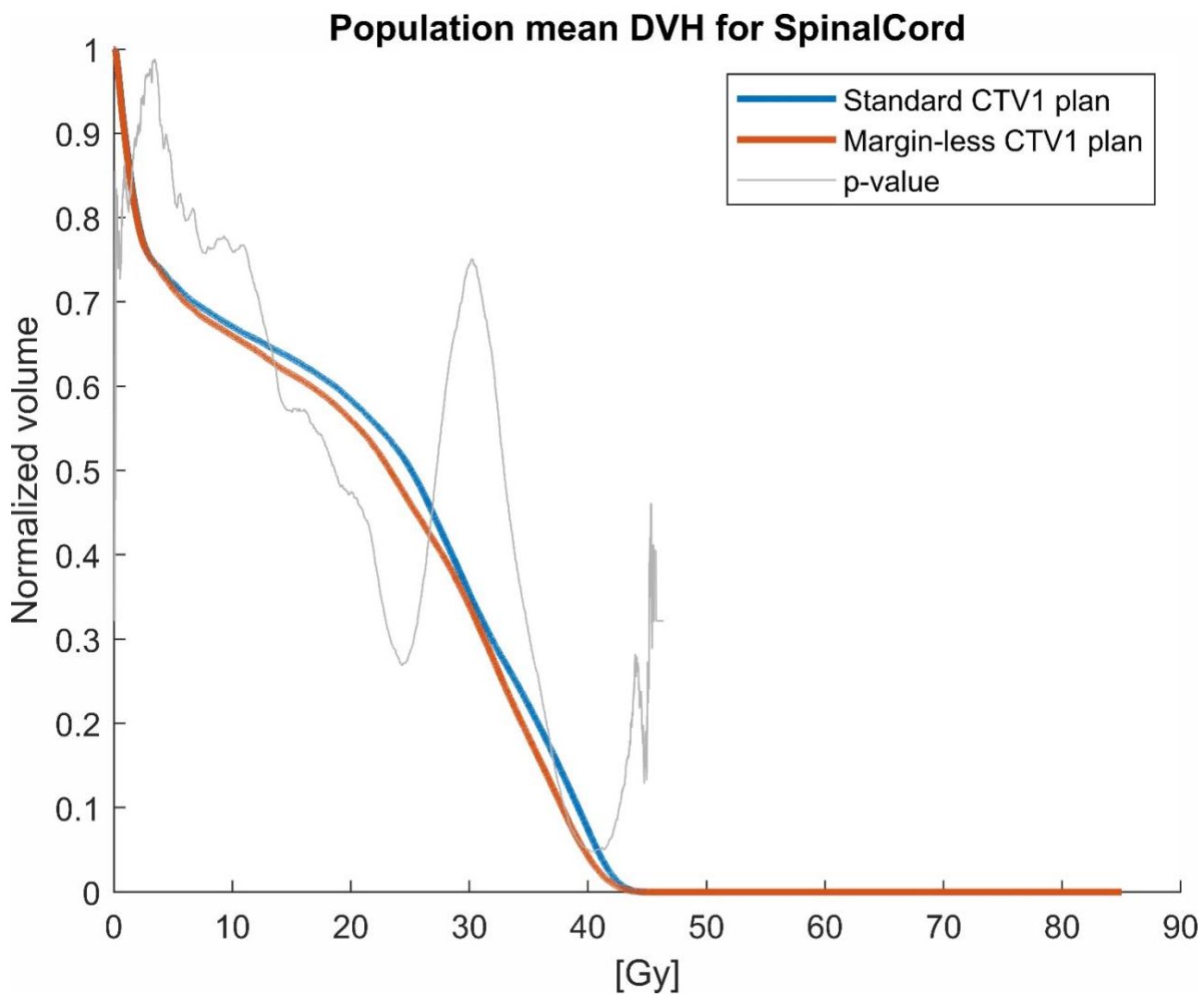
Population mean dose-volume histogram (DVH) for the [OAR name] comparing standard CTV1 plans (blue) and margin-less CTV1 plans (red). Dose-bin-wise p-values (gray) indicate statistically significant differences across relevant portions of the dose distribution.

Figure 14



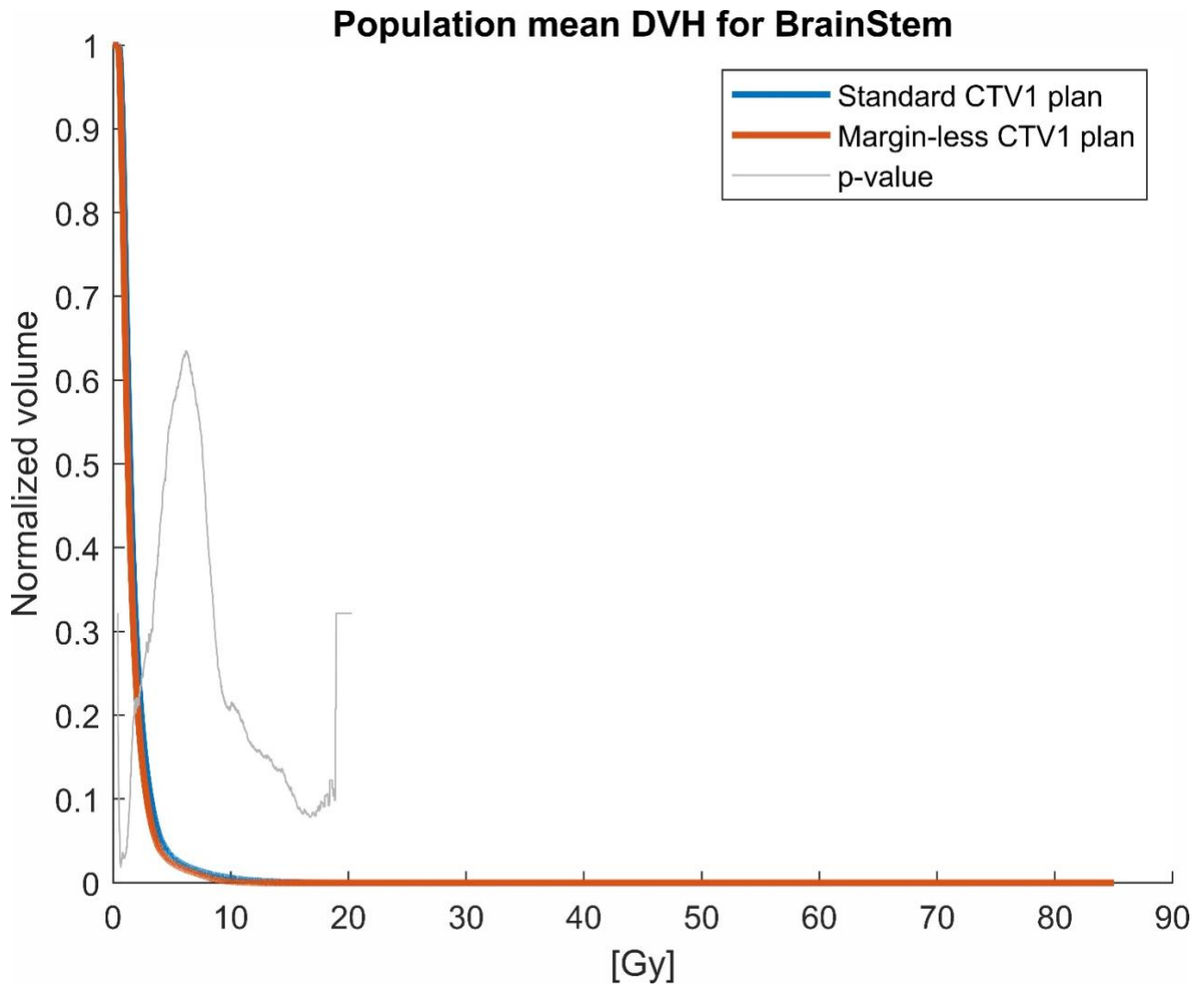
Population mean dose-volume histogram (DVH) for the [OAR name] comparing standard CTV1 plans (blue) and margin-less CTV1 plans (red). Dose-bin-wise p-values (gray) indicate statistically significant differences across relevant portions of the dose distribution.

Figure 15



Population mean dose-volume histogram (DVH) for the [OAR name] comparing standard CTV1 plans (blue) and margin-less CTV1 plans (red). Dose-bin-wise p-values (gray) indicate statistically significant differences across relevant portions of the dose distribution.

Figure 16



Population mean dose-volume histogram (DVH) for the [OAR name] comparing standard CTV1 plans (blue) and margin-less CTV1 plans (red). Dose-bin-wise p-values (gray) indicate statistically significant differences across relevant portions of the dose distribution.