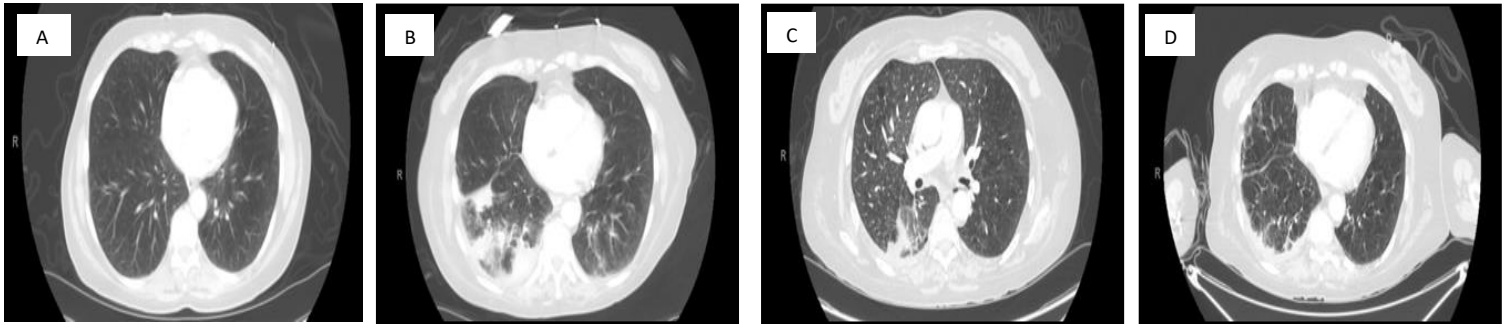


Prior to CIP Episodes

Chest CT at CIP Episodes



Supplementary Figure 1. A) prior to CIP episodes at diagnosis (primary RUL lesion not pictured). **B)** At time of first episode of CIP with patchy consolidations in the ipsilateral lower right lung field; imaging was clinically associated with grade 3 CIP. **C)** Day 108, patient presented for second CIP episode, imaging showed mild patchy inflammation in the middle right lung field; clinically associated with grade 3 CIP. **D)** Day 156, patient reported right sided pleurodynia and clinically stable respiratory status. Imaging revealed bilateral emphysematous lung fields and several regions of patchy inflammation in the lower right lung fields.