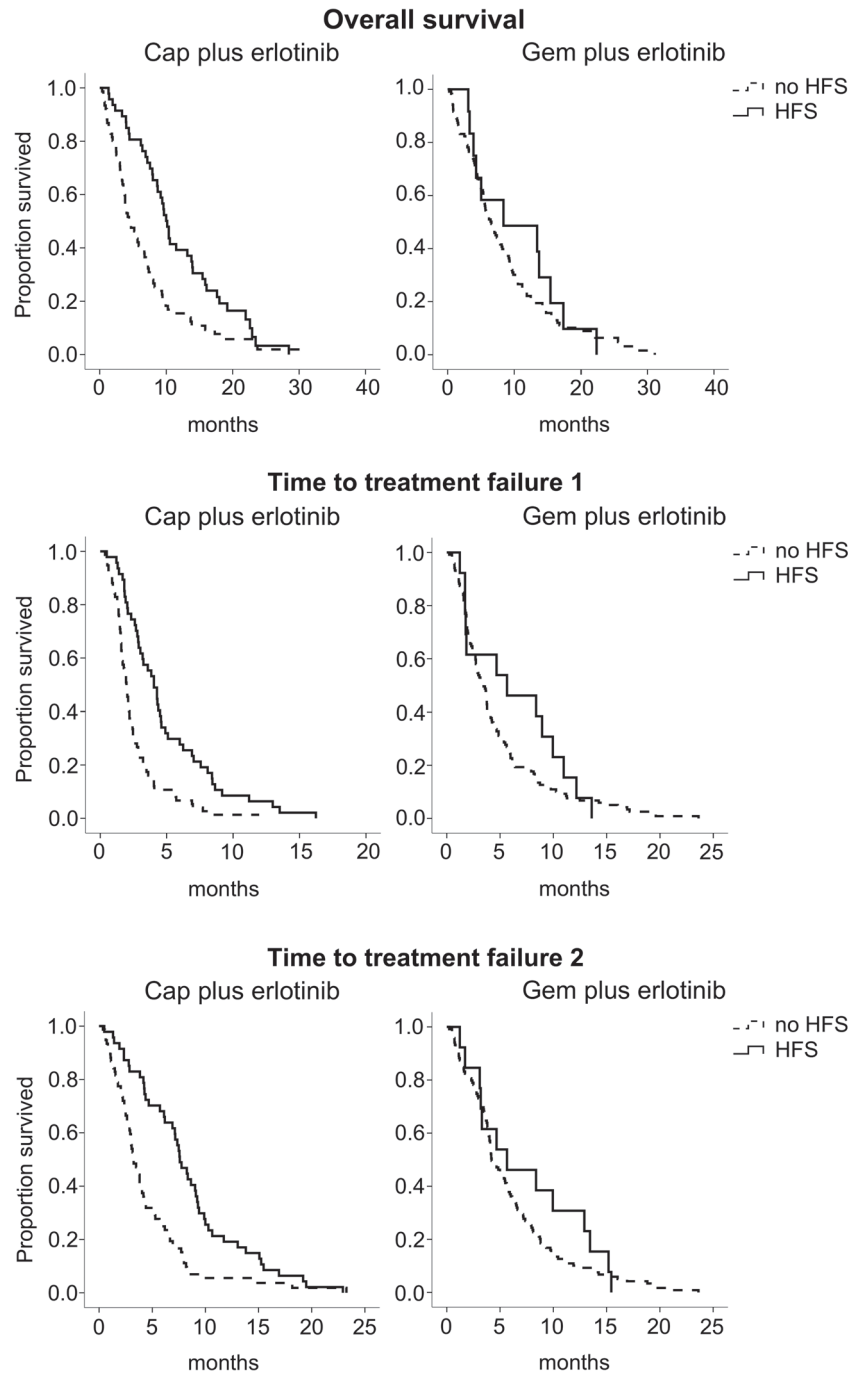


Supplementary material for Kruger S, et al. Impact of hand-foot skin reaction on treatment outcome in patients receiving capecitabine plus erlotinib for advanced pancreatic cancer: A subgroup analysis from AIO-PK0104. Acta Oncol 2015;54:993–1000.



Supplementary Figure 1. Correlation of hand-foot skin reaction (HFS) during first-line therapy with time to treatment failure after first-line therapy (TTF1), time to treatment failure after first- and second-line therapy (TTF2) and overall survival (OS) displayed separately for patients in treatment arm A receiving first-line capecitabine (Cap) plus erlotinib (n = 123) and patients in treatment arm B receiving first-line gemcitabine (Gem) plus erlotinib (n = 132).

Supplementary Table I. Correlation of hand-foot skin reaction during first-line therapy with efficacy study endpoints.

HFS grades		0	1–3	0	1–3		
Endpoint	Subgroup	No		Months		p-Value	HR (95% CI)
TTF1	Arm A: Cap+ E	76	47	2.0	4.0	< 0.001	0.42 (0.29–0.62)
	Arm B: Gem+ E	119	13	3.5	5.7	0.322	0.75 (0.42–1.33)
TTF2	Arm A: Cap+ E	76	47	3.2	7.6	< 0.001	0.46 (0.32–0.67)
	Arm B: Gem+ E	119	13	4.2	5.7	0.375	0.77 (0.43–1.37)
OS	Arm A: Cap+ E	76	47	4.4	10.2	0.001	0.52 (0.35–0.76)
	Arm B: Gem+ E	119	13	6.6	8.4	0.505	0.81 (0.44–1.51)

Cap, capecitabine; E, erlotinib; Gem, gemcitabine; HR, hazard ratio; No, number of patients; OS, overall survival; TTF1, time to treatment failure after first-line therapy, TTF2, time to treatment failure after first- and second-line therapy.

Supplementary Table II. Correlation of HFS during first-line therapy with efficacy study endpoints: patients on study for  $\geq 3$  cycles only.

Hand-foot skin reaction (grade)		0	1–3	0	1–3	p-Value	HR (95% CI)
Endpoint	Subgroup	No	Months				
TTF1	Arm A: Cap+ E	36	34	3.0	4.5	0.004	0.49 (0.30–0.80)
TTF2	Arm A: Cap+ E	36	34	4.4	8.3	0.010	0.53 (0.33–0.87)
OS	Arm A: Cap+ E	36	34	6.7	10.4	0.056	0.62 (0.37–1.01)

Cap, capecitabine; CI, confidence interval; E, erlotinib; HR, hazard ratio; No, number of patients; OS, overall survival; TTF1, time to treatment failure after first-line therapy; TTF2, time to treatment failure after first- and second-line therapy.