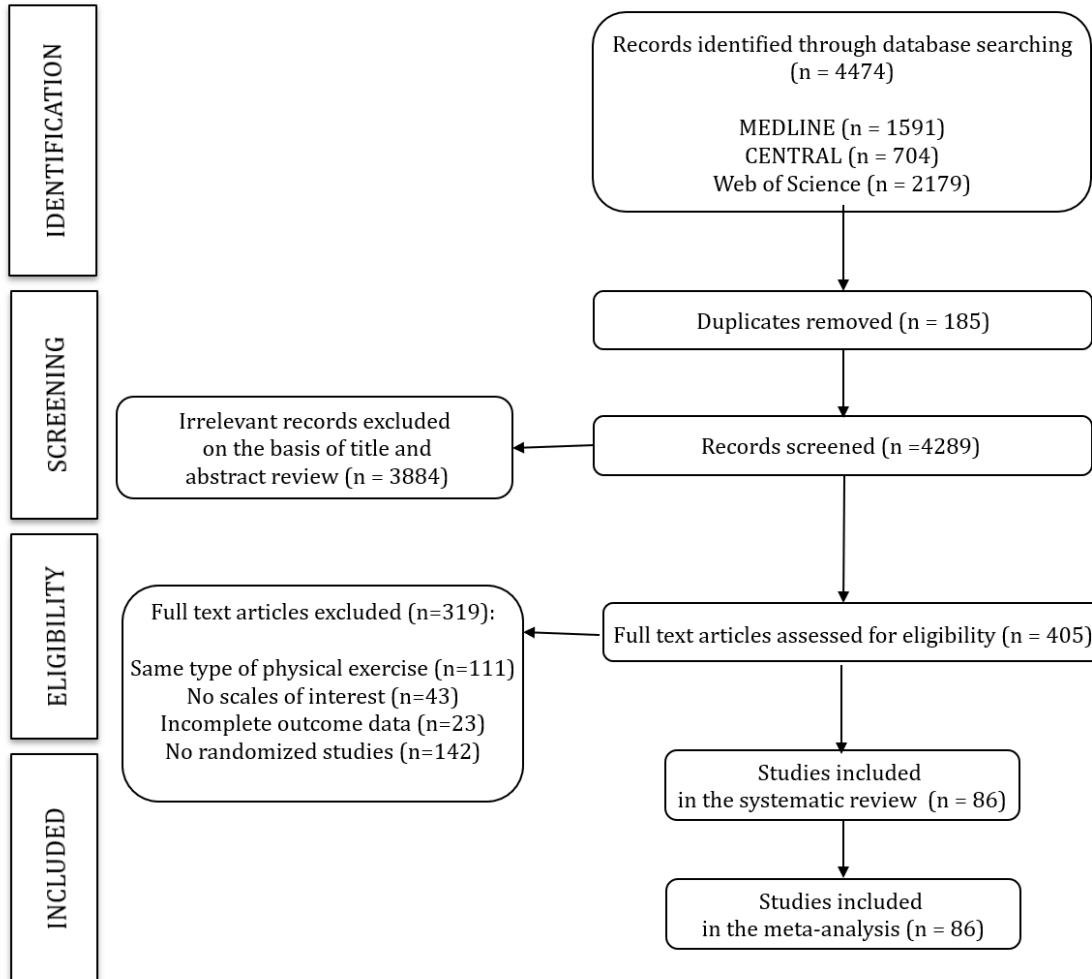
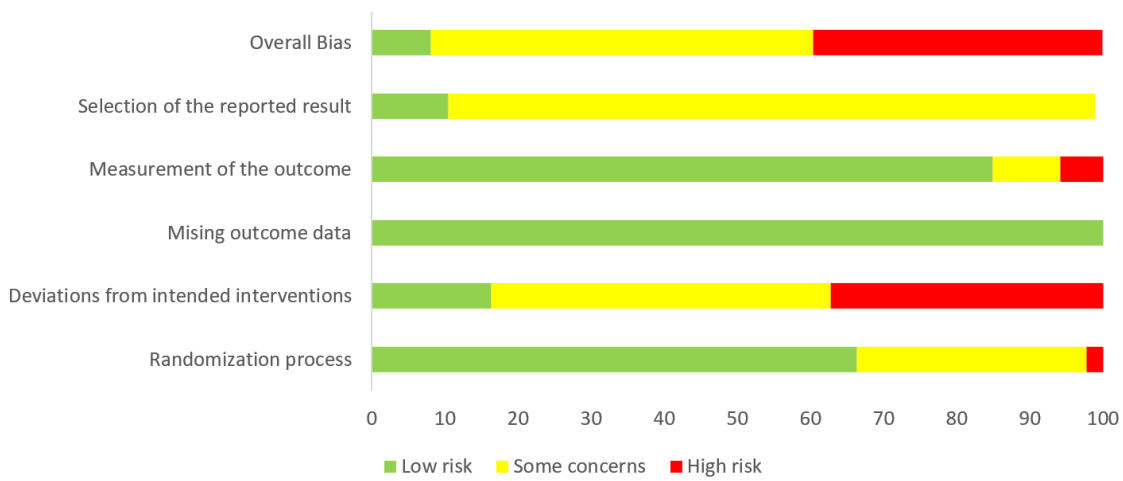


Supplementary material has been published as submitted. It has not been copyedited, typeset or checked for scientific content by Journal of Rehabilitation Medicine

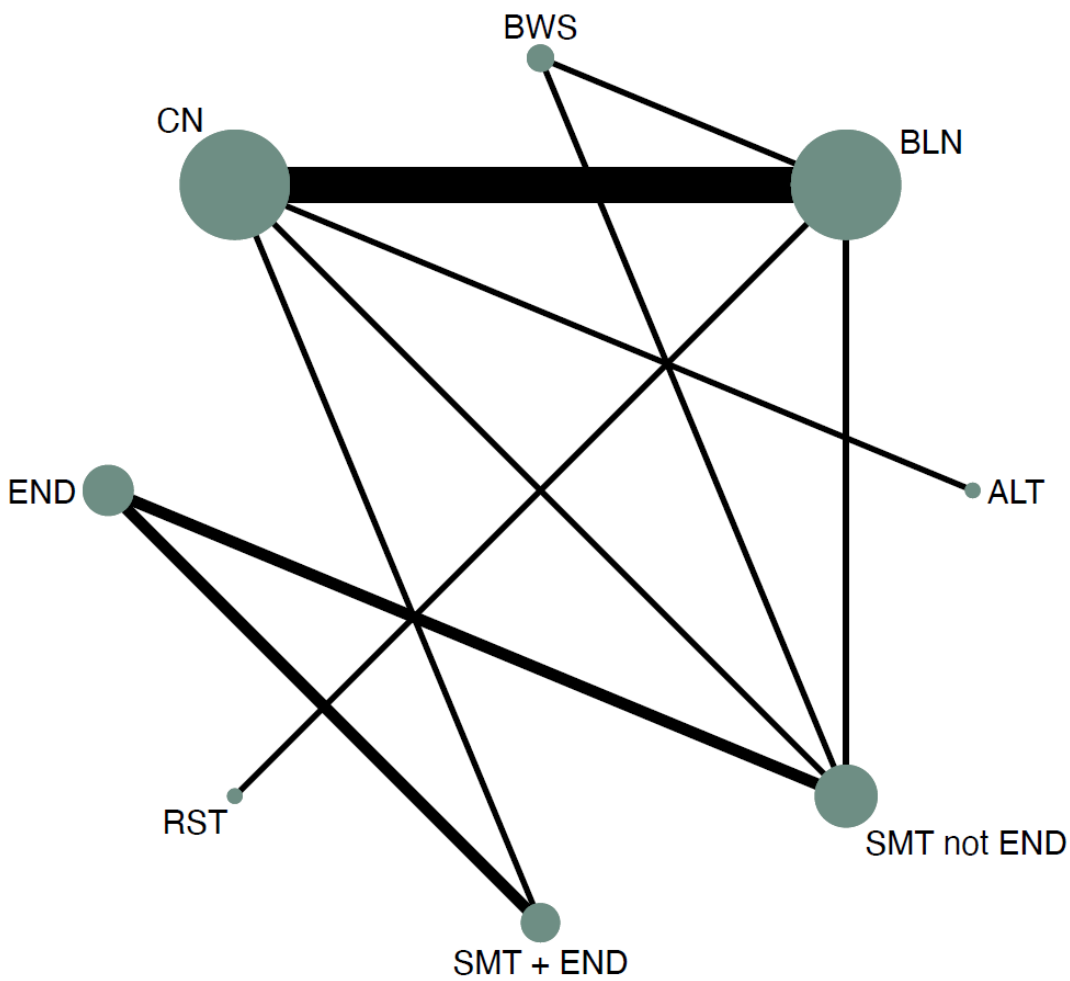
Figure S1. PRISMA Flow chart for included studies.



**Figure S2.** Risk of bias assessed with RoB2 for included randomized studies.

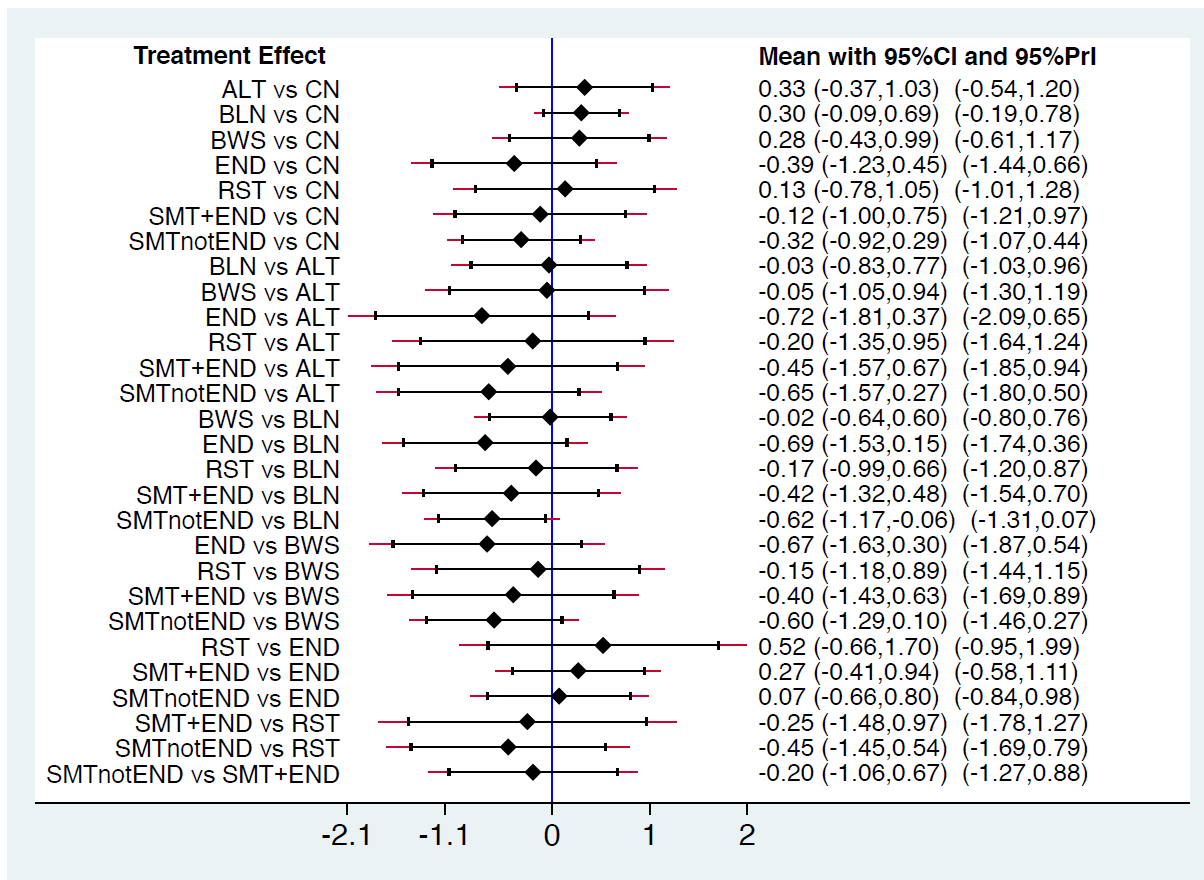


**Figure S3.** Network geometry graph for ABC scale.



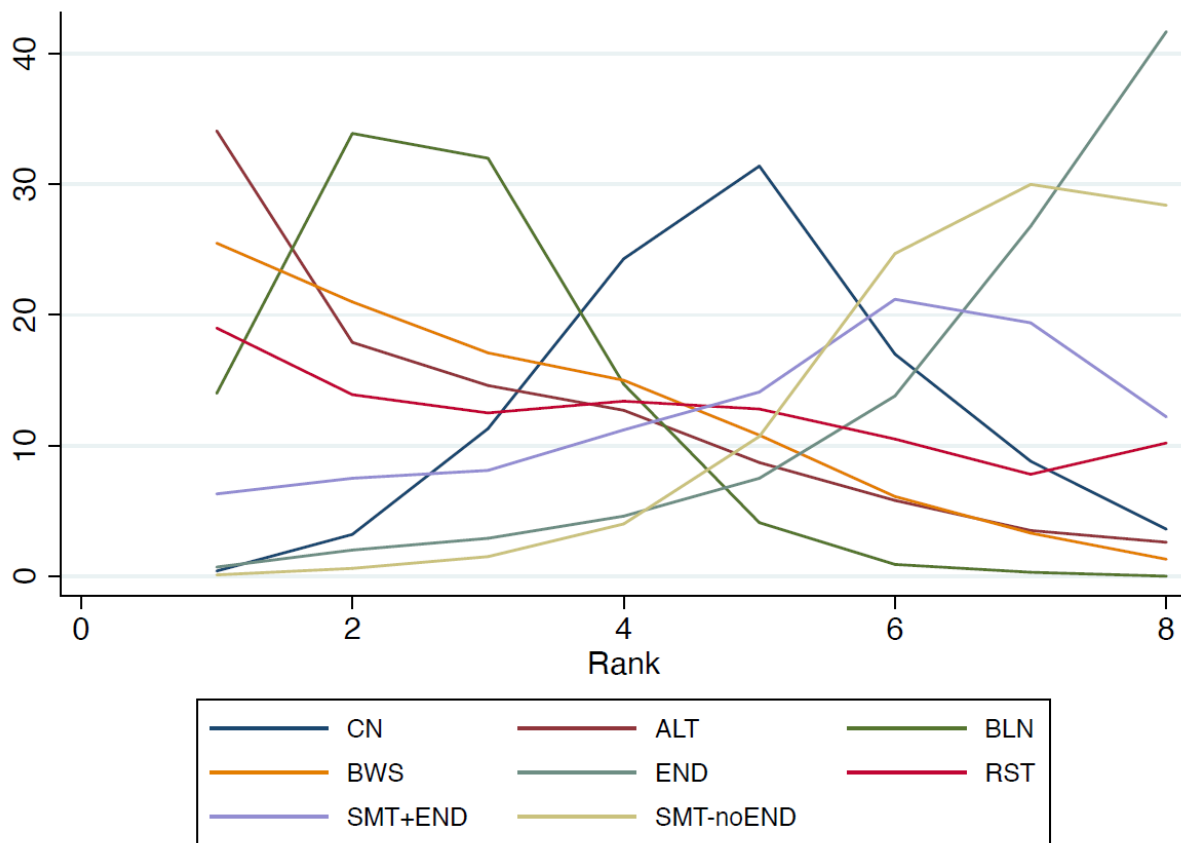
ALT: alternative exercises; BLN: balance interventions; BWS: body weight supported interventions; CN: control; END: endurance; RST: resistance; SMT + END: sensorimotor training including endurance; SMT not END: sensorimotor training not including endurance.

**Figure S4.** Forest plot for the indirect effect of physical exercise interventions in Parkinson disease patients' punctuation in ABC scale.



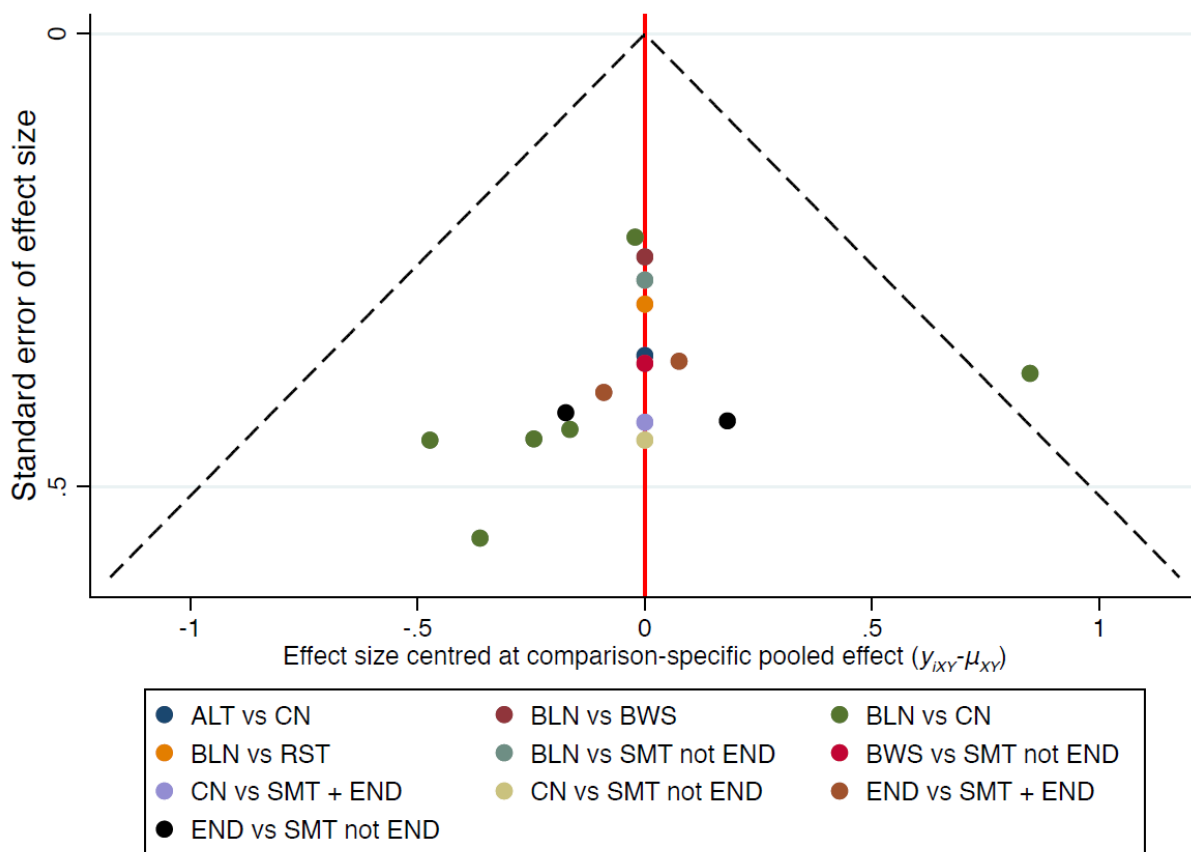
ALT: alternative exercises; BLN: balance interventions; BWS: body weight supported interventions; CN: control; END: endurance; RST: resistance; SMT + END: sensorimotor training including endurance; SMT not END: sensorimotor training not including endurance.

**Figure S5.** Rankogram for each physical exercise intervention for ABC scale.



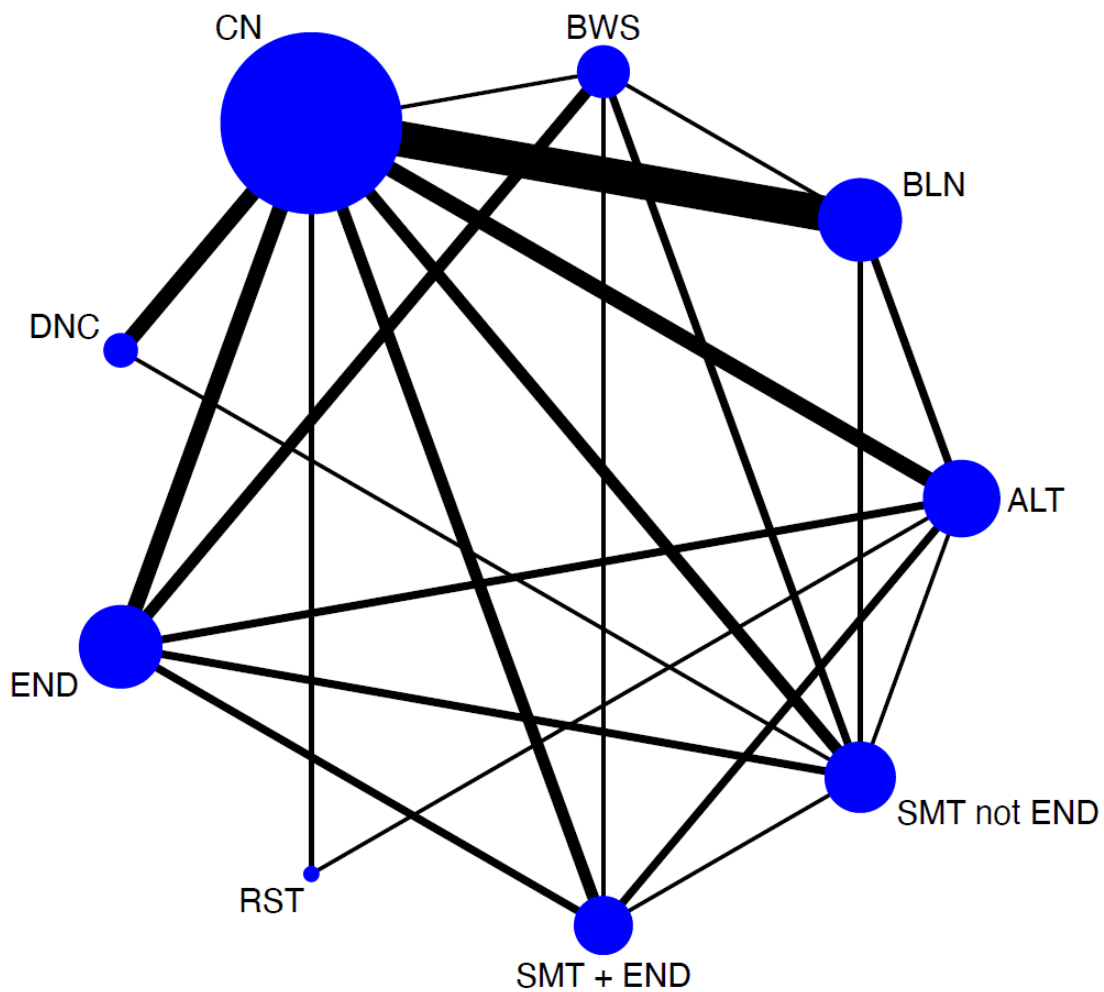
ALT: alternative exercises; BLN: balance interventions; BWS: body weight supported interventions; CN: control; END: endurance; RST: resistance; SMT + END: sensorimotor training including endurance; SMT-noEND: sensorimotor training not including endurance.

**Figure S6.** Funnel plot for comparison-specific pooled mean differences for ABC scale.



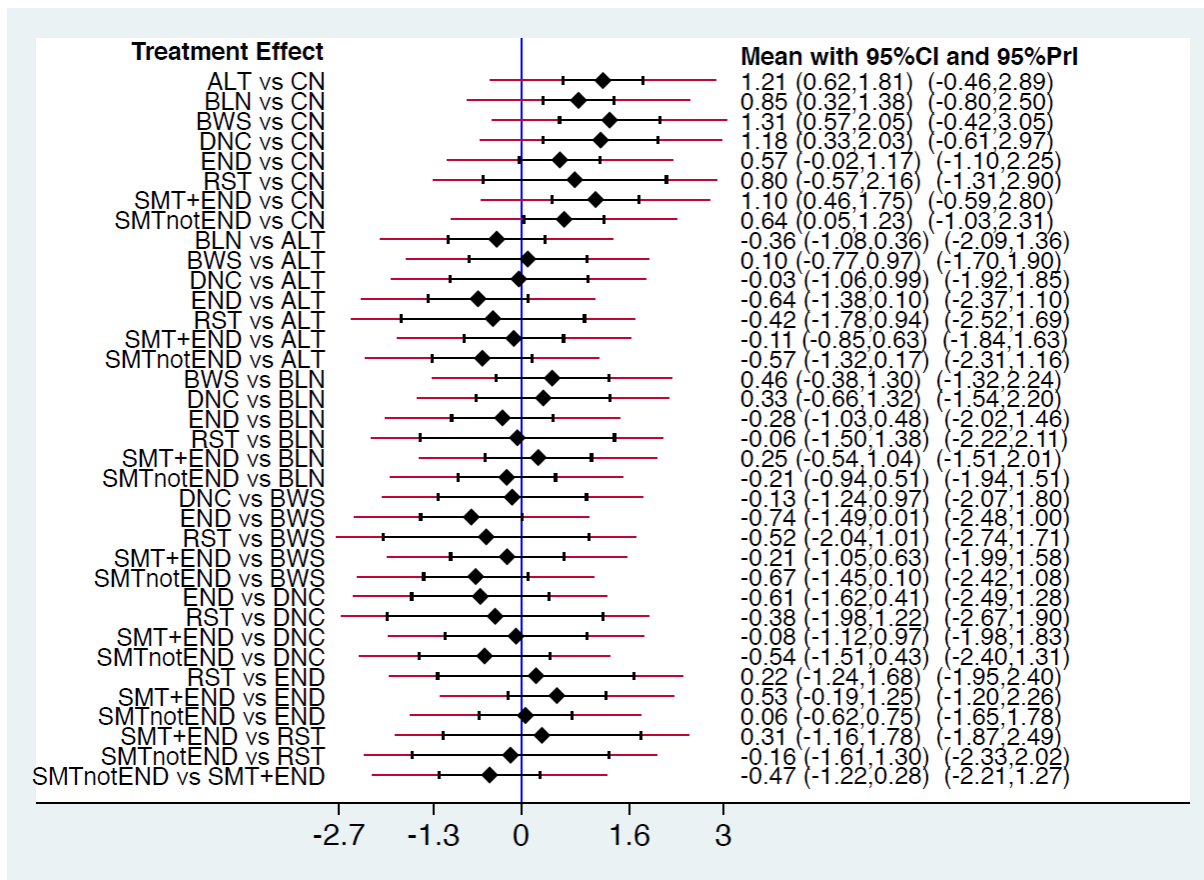
ALT: alternative exercises; BLN: balance interventions; BWS: body weight supported interventions; CN: control; END: endurance; RST: resistance; SMT + END: sensorimotor training including endurance; SMT not END: sensorimotor training not including endurance.

**Figure S7.** Network geometry graph for BBS scale.



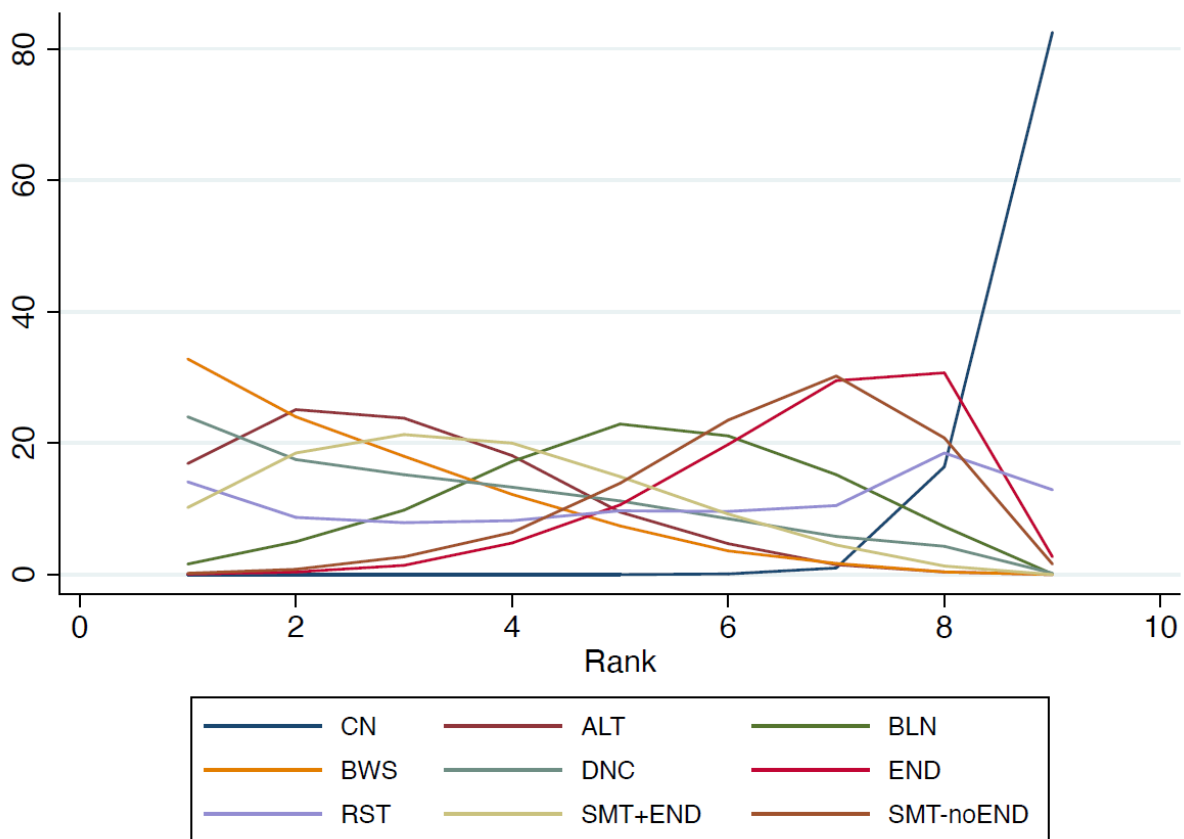
ALT: alternative exercises; BLN: balance interventions; BWS: body weight supported interventions; CN: control; DNC: dance; END: endurance; RST: resistance; SMT + END: sensorimotor training including endurance; SMT not END: sensorimotor training not including endurance.

**Figure S8.** Forest plot for the indirect effect of physical exercise interventions in Parkinson disease patients' punctuation in BBS scale.



ALT: alternative exercises; BLN: balance interventions; BWS: body weight supported interventions; CN: control; DNC: dance; END: endurance; RST: resistance; SMT + END: sensorimotor training including endurance; SMT not END: sensorimotor training not including endurance.

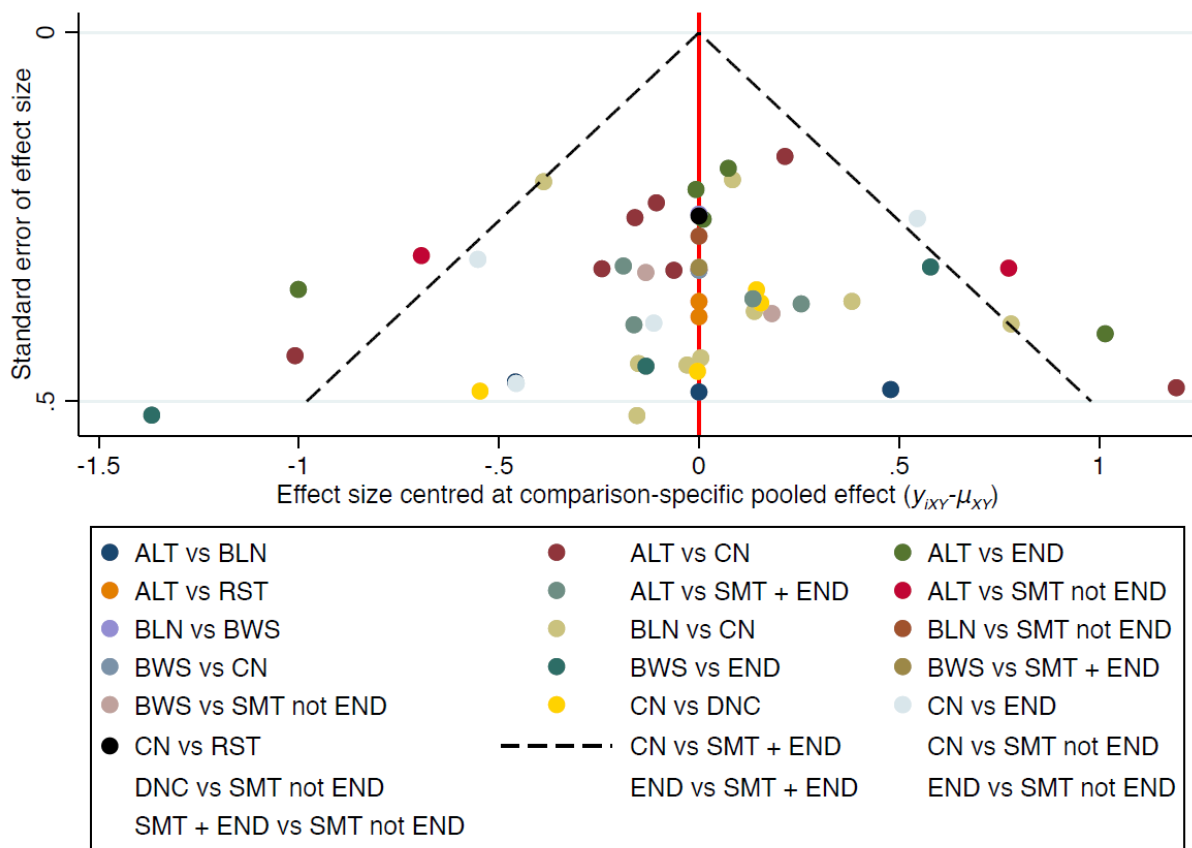
**Figure S9.** Rankogram for each physical exercise intervention for BBS scale.



ALT: alternative exercises; BLN: balance interventions; BWS: body weight supported interventions; CN: control; DNC: dance; END: endurance; RST: resistance; SMT + END: sensorimotor training including endurance; SMT-noEND: sensorimotor training not including endurance.

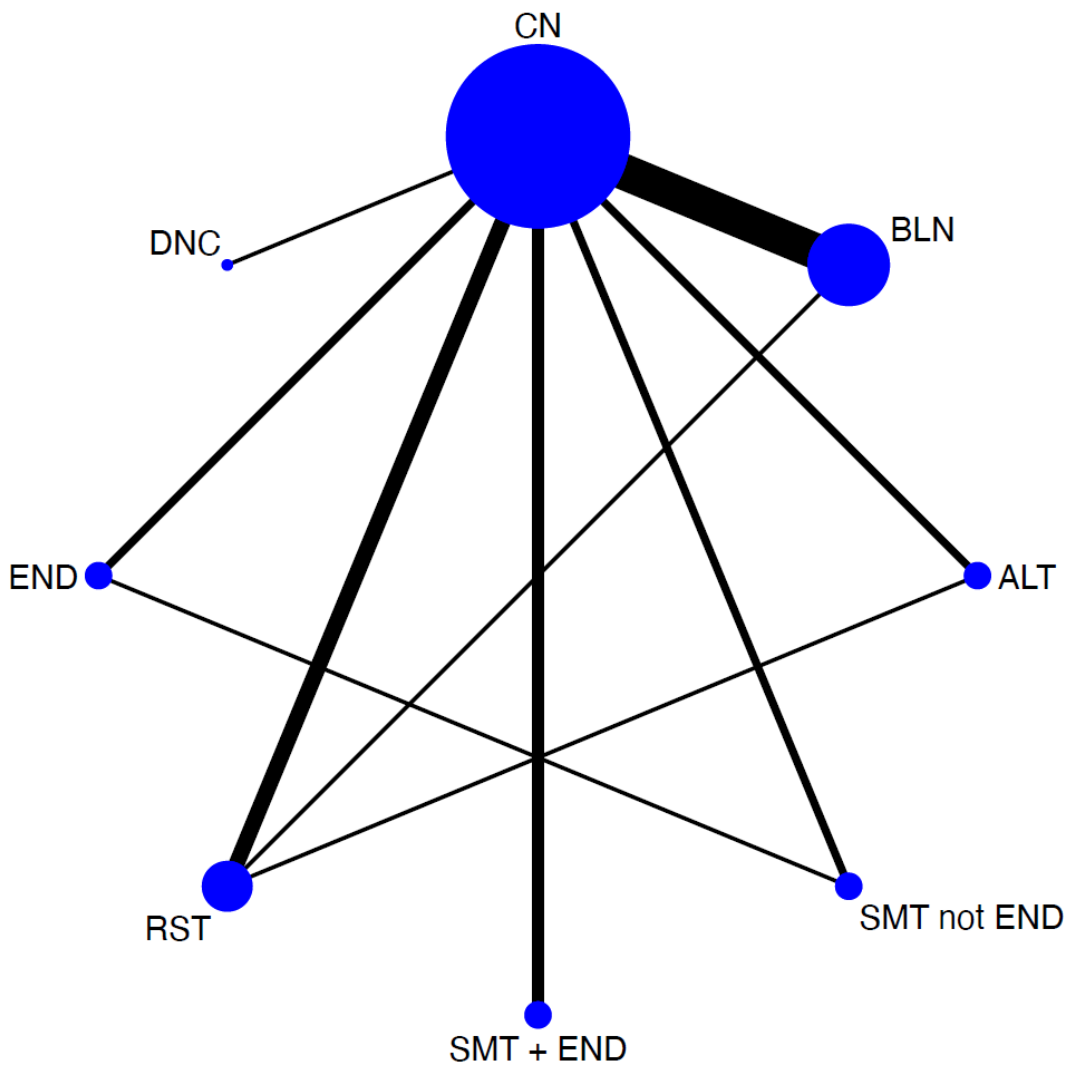


**Figure S10.** Funnel plot for comparison-specific pooled mean differences for BBS.



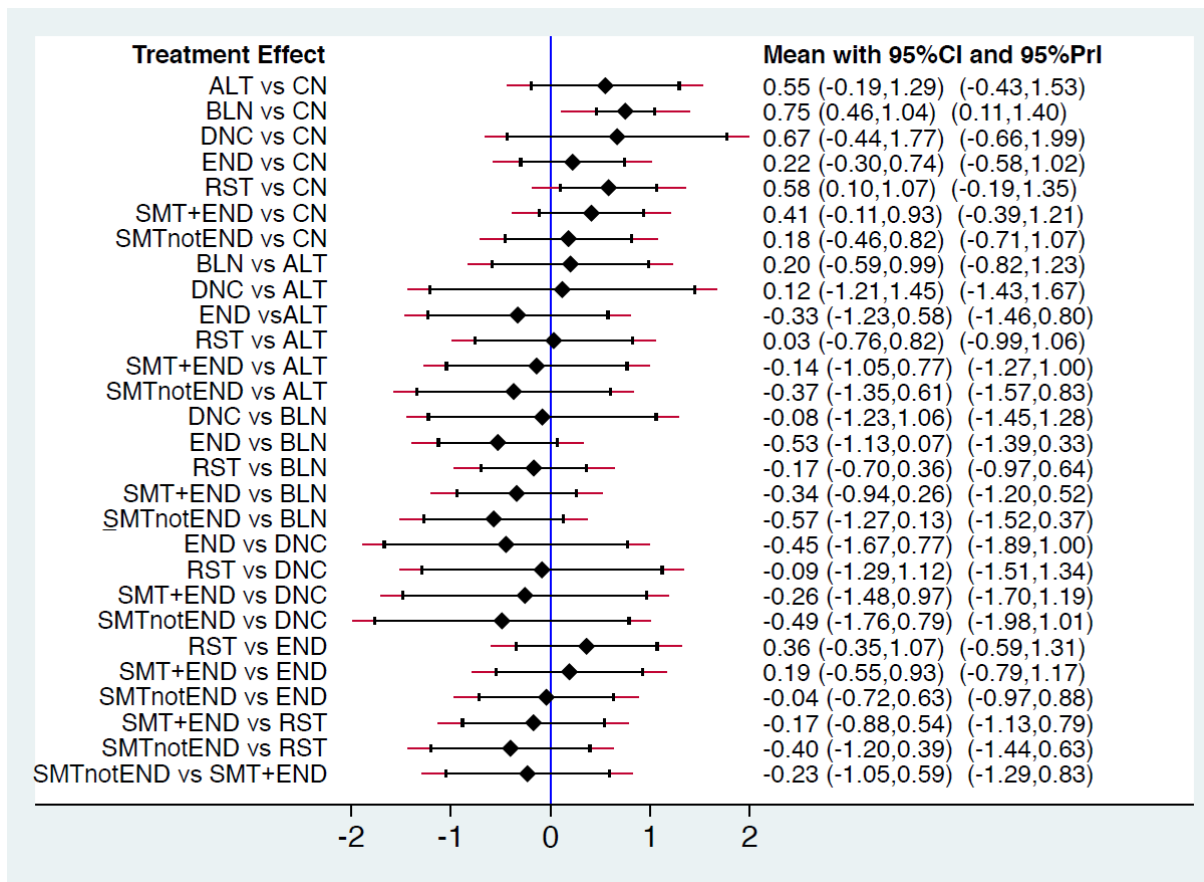
ALT: alternative exercises; BLN: balance interventions; BWS: body weight supported interventions; CN: control; DNC: dance; END: endurance; RST: resistance; SMT + END: sensorimotor training including endurance; SMT not END: sensorimotor training not including endurance.

**Figure S11.** Network geometry graph for MiniBESTest test.



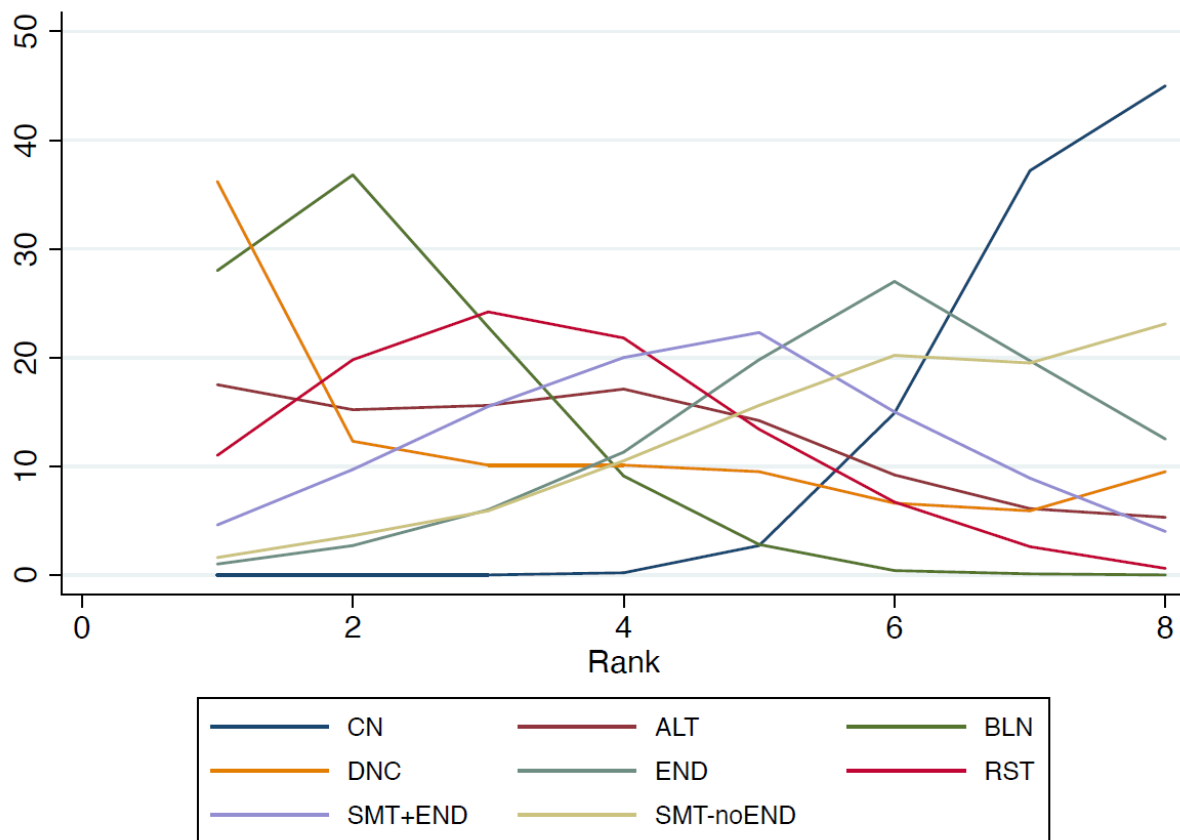
ALT: alternative exercises; BLN: balance interventions; CN: control; DNC: dance; END: endurance; RST: resistance; SMT + END: sensorimotor training including endurance; SMT not END: sensorimotor training not including endurance.

**Figure S12.** Forest plot for the indirect effect of physical exercise interventions in Parkinson disease patients' punctuation in MiniBEST Test.



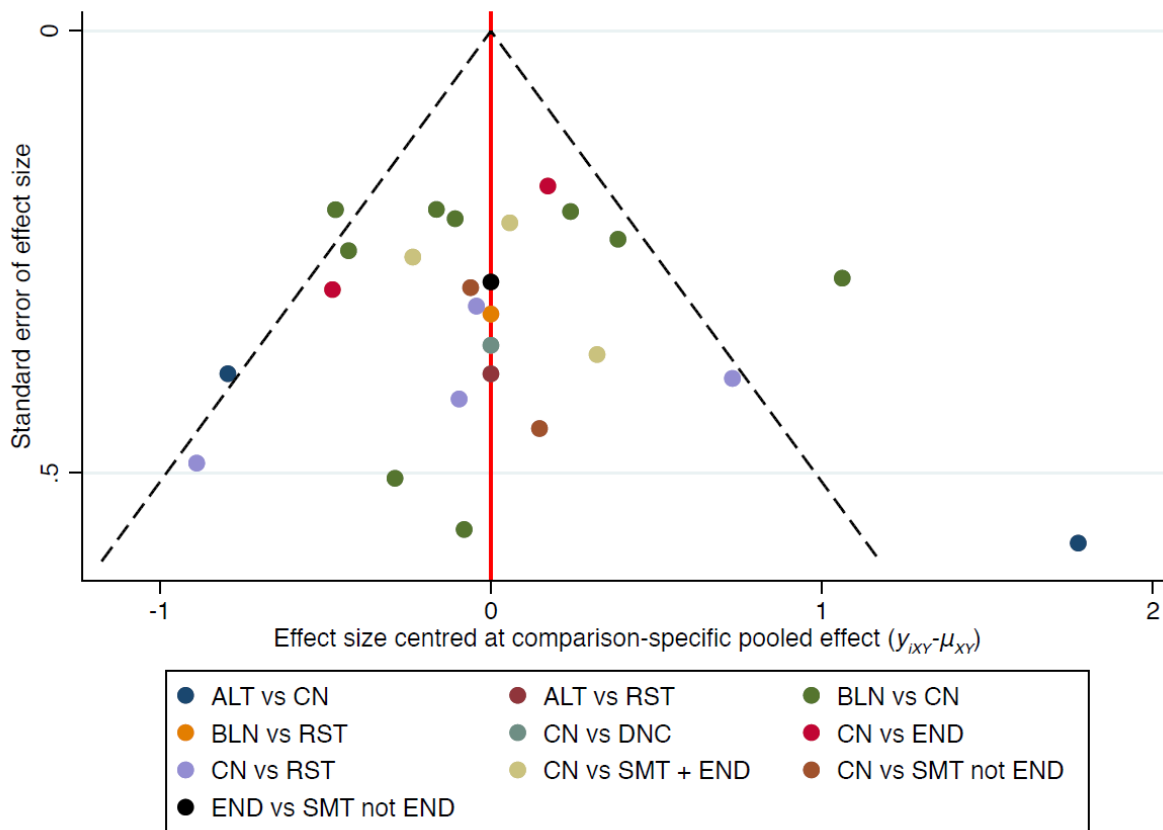
ALT: alternative exercises; BLN: balance interventions; CN: control; DNC: dance; END: endurance; RST: resistance; SMT + END: sensorimotor training including endurance; SMT not END: sensorimotor training not including endurance.

**Figure S13.** Rankogram for each physical exercise intervention for MiniBESTest test.



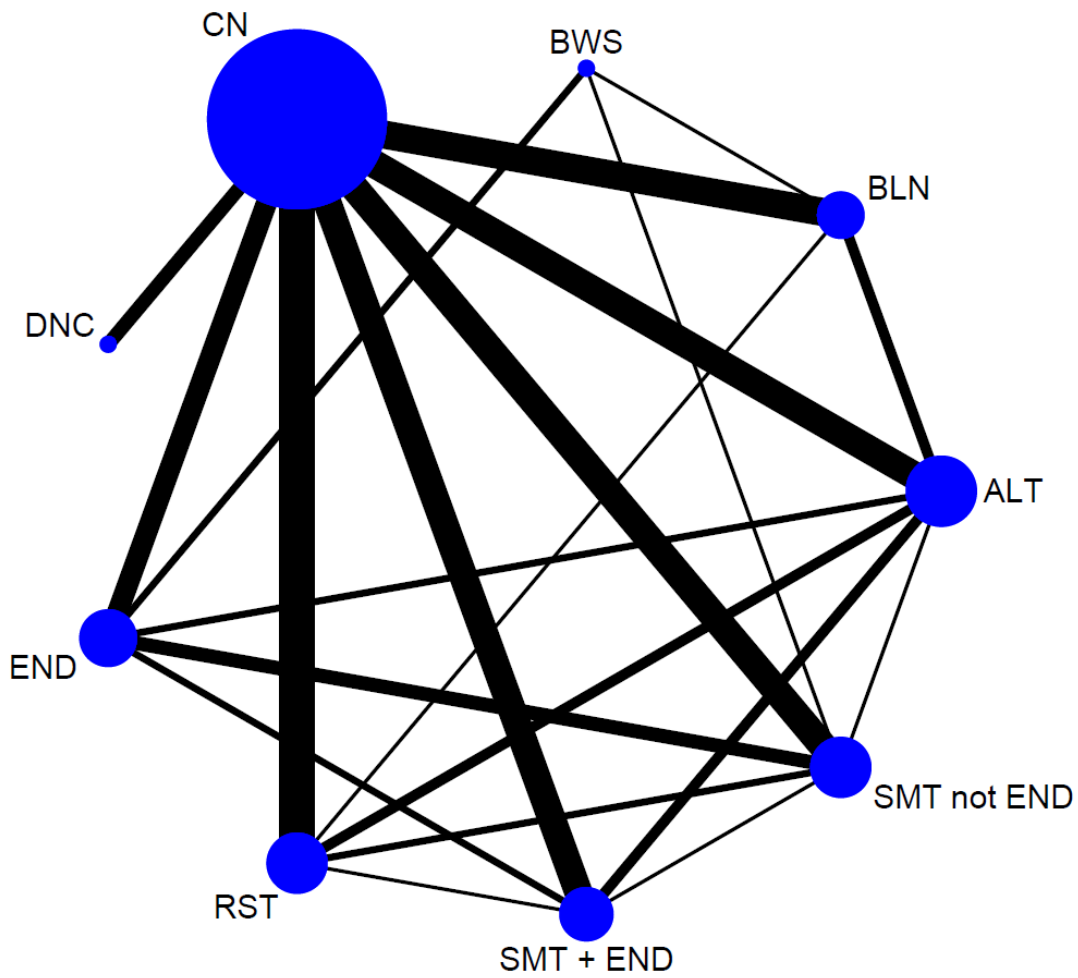
ALT: alternative exercises; BLN: balance interventions; CN: control; DNC: dance; END: endurance; RST: resistance; SMT + END: sensorimotor training including endurance; SMT-noEND: sensorimotor training not including endurance.

**Figure S14.** Funnel plot for comparison-specific pooled mean differences for MiniBESTest.



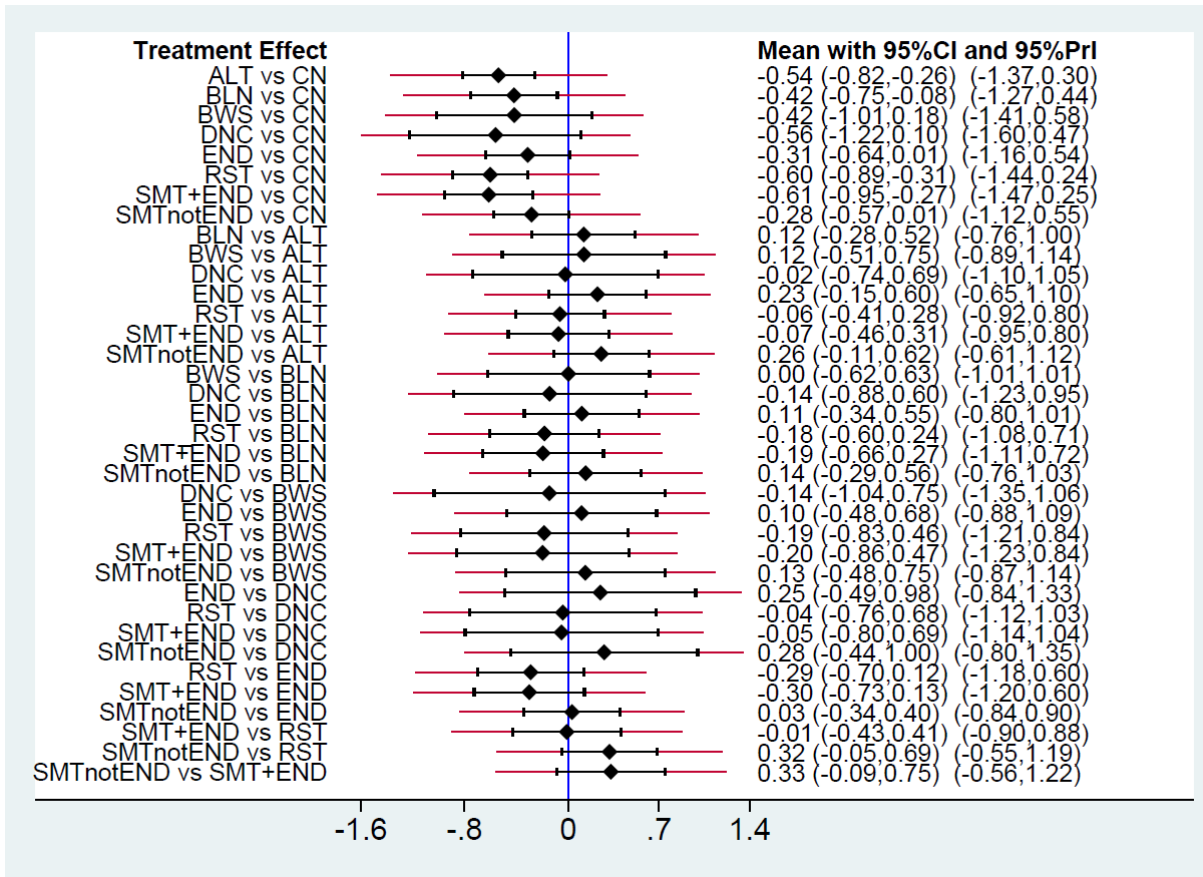
ALT: alternative exercises; BLN: balance interventions; CN: control; DNC: dance; END: endurance; RST: resistance; SMT + END: sensorimotor training including endurance; SMT not END: sensorimotor training not including endurance.

**Figure S15.** Network geometry graph for TUG test.



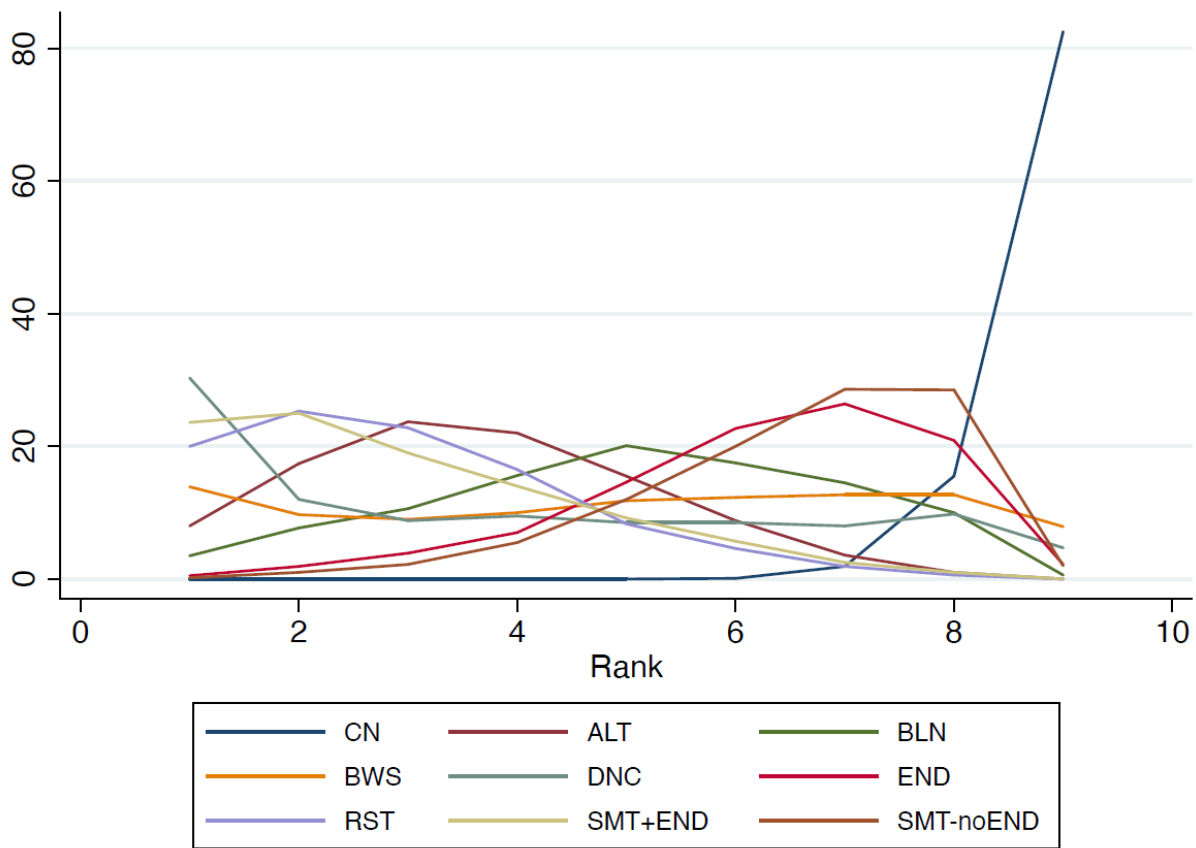
ALT: alternative exercises; BLN: balance interventions; BWS: body weight supported interventions; CN: control; DNC: dance; END: endurance; RST: resistance; SMT + END: sensorimotor training including endurance; SMT not END: sensorimotor training not including endurance.

**Figure S16.** Forest plot for the indirect effect of physical exercise interventions in Parkinson disease patients' punctuation in TUG test.



ALT: alternative exercises; BLN: balance interventions; BWS: body weight supported interventions; CN: control; DNC: dance; END: endurance; RST: resistance; SMT + END: sensorimotor training including endurance; SMT not END: sensorimotor training not including endurance.

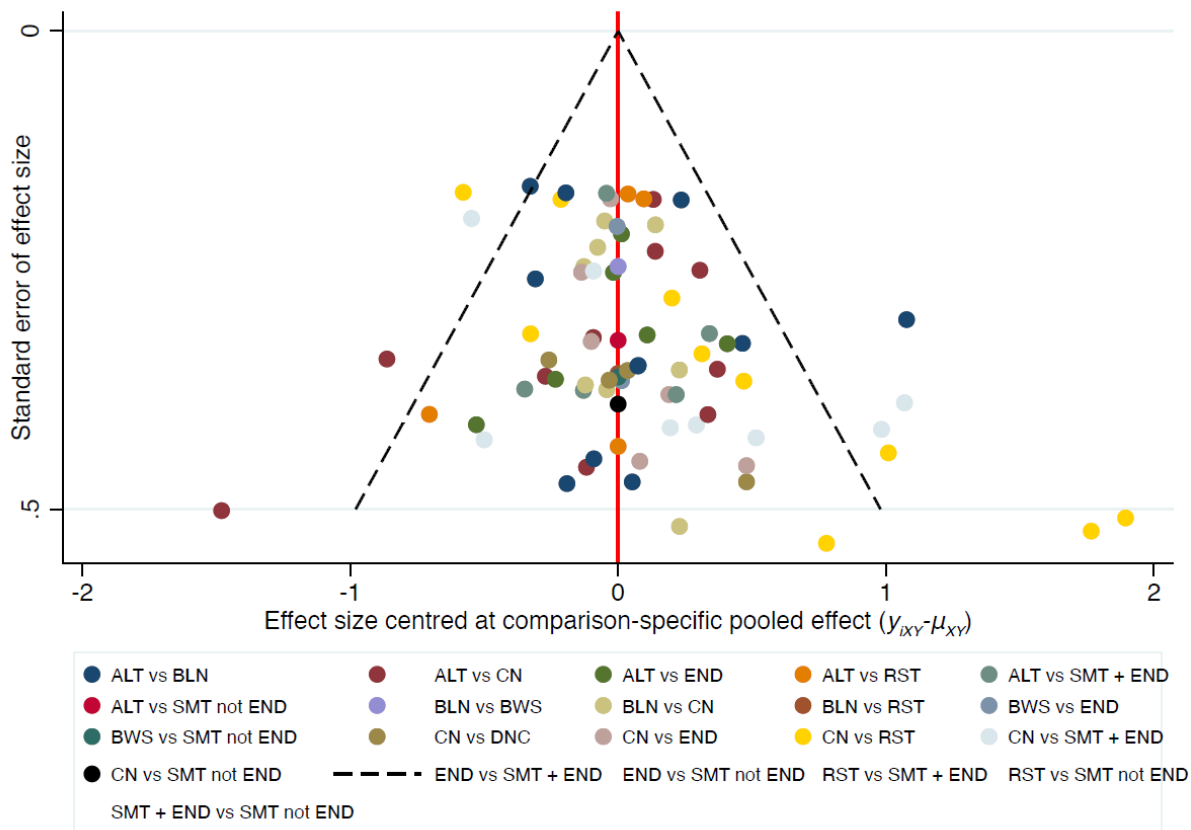
**Figure S17.** Rankogram for each physical exercise intervention for TUG test.



ALT: alternative exercises; BLN: balance interventions; BWS: body weight supported interventions; CN: control; DNC: dance; END: endurance; RST: resistance; SMT + END: sensorimotor training including endurance; SMT-noEND: sensorimotor training not including endurance.



**Figure S18.** Funnel plot for comparison-specific pooled mean differences for TUG test.



ALT: alternative exercises; BLN: balance interventions; BWS: body weight supported interventions; CN: control; DNC: dance; END: endurance; RST: resistance; SMT + END: sensorimotor training including endurance; SMT not END: sensorimotor training not including endurance.