

REVIEW ARTICLE

THE EFFECTIVENESS OF WORKING WRIST SPLINTS IN ADULTS WITH RHEUMATOID ARTHRITIS: A MIXED METHODS SYSTEMATIC REVIEW

Lucia Ramsey, BSc (Hons), OT, Robert John Winder, PhD and Joseph G. McVeigh, PhD

From the Centre for Health and Rehabilitation Technologies, University of Ulster, Ulster, Northern Ireland

Objective: To evaluate the effectiveness of working wrist splints in people with rheumatoid arthritis.

Data sources and study selection: This review adhered to the Preferred Reporting Items for Systematic reviews and Meta-Analyses guidelines. Ten databases were searched from inception until September 2012 for quantitative and qualitative studies on the effectiveness of working wrist splints in rheumatoid arthritis.

Data extraction: Data was extracted on participants, interventions, outcome measures and results. Experimental studies were evaluated using the van Tulder scale and the Cochrane Risk of Bias tool. Data was extracted by a single reviewer and all studies were reviewed by two blind reviewers.

Data synthesis: Twenty-three studies were included in the review ($n=1,492$), 13 experimental studies including 9 randomized controlled trials (RCTs) and 2 qualitative studies. Data was summarized using best evidence synthesis and a meta-ethnographical approach guided qualitative evidence synthesis. There is strong quantitative evidence (including 9 RCTs), supported by conclusions from qualitative literature, that working wrist splints reduce pain ($d=0.7-0.8$), moderate evidence that grip strength is improved ($d=0.3-0.4$) and dexterity impaired and insufficient evidence of their effect on function.

Conclusions: Working wrist splints reduce pain and improve grip in rheumatoid arthritis. The effect of splints on function is not yet clear.

Key words: working wrist splint; rheumatoid arthritis; mixed methods systematic review.

J Rehabil Med 2014; 46: 481–492

Correspondence address: Lucia Ramsey, Centre for Health and Rehabilitation Technologies (CHaRT), School of Health Sciences, University of Ulster, Shore Road BT370QB UK. E-mail: l.ramsey@ulster.ac.uk

Accepted Jan 16, 2014; Epub ahead of print Apr 8, 2014

INTRODUCTION

Rheumatoid arthritis (RA) is a chronic, systemic, inflammatory disease (1) affecting 400,000 people in the UK (2). Early intervention is emphasized in RA in order to maintain function, inhibit joint damage and improve patients' quality of life. National Institute for Health and Clinical Excellence (NICE) guidelines (1) recommend a combination of pharmacological and non-pharmacological therapy (3).

Sixty percent of patients with RA have hand and wrist problems (1) that could benefit from occupational therapy (OT) and these patients are routinely referred for splinting (4, 5, 6). Several terms are used to describe wrist splints which are thought to support the wrist, restrict movement and thereby reduce pain and allow for greater functional use of the hand. For the purpose of this review the term working wrist splint will be used to define splints which support the wrist and allow for functional use of the hand. Treatment guidelines (1, 7, 8) recommend that working wrist splints should be offered to patients with RA, however, they also highlight the lack of rigorous analysis of their effectiveness. Only one Cochrane review (9), one systematic review (10) and two narrative reviews (5, 11) have exclusively examined the evidence for splinting in patients with RA.

Egan et al. (9) examined the use of splints and orthosis in the treatment of RA and included 14 studies of which 8 were randomized controlled trials (RCTs). Five studies examined working wrist splints, and Egan et al. (9) concluded that they have no positive effect on pain. However, this review included a wide range of splint types, and overall the quality of studies was rated as 'fair'. Steultjens et al. (12) explored the evidence for a range of OT interventions used in treating patients with RA, 16 studies, including 7 RCTs, focused on a range of upper limb splints. The authors concluded that there were indicative findings that splints decrease pain, however, they rated the overall methodological quality of the studies as poor.

Previous literature reviews have not examined the full breadth of literature, most have been unsystematic in their approach and frequently have failed to adequately report results or present conflicting interpretation of the same studies. Consequently there is no clear guidance for clinicians on the effectiveness and use of working wrist splints in RA.

When attempting to answer questions of effectiveness, the statistical combination of reported data, as is common in systematic reviews, could be criticized as lacking context and explanation (13). Similarly, qualitative studies can only provide insight to develop an understanding of lived experiences. Theories generated from these insights however, can be examined for evidence of their effect in the quantitative literature and a deeper understanding of the impact of splinting can be gained through a combined synthesis of the breadth of literature available. By including evidence from diverse study types this review aimed to provide a much richer and more

meaningful answer (13) to the question: Are working wrist splints effective in the management of patients with RA? Effectiveness is defined as improvement in function, strength, pain and dexterity for the purpose of this review.

METHODS

Data sources and searches

The protocol for this study was registered with the Centre for Review and Dissemination (CRD42012001946) and the review was conducted according to the Preferred Reporting Items for Systematic reviews and Meta-Analyses (14) (PRISMA) guidelines. A systematic electronic literature search was conducted using 10 databases (Fig. 1) from their date of inception to September 2012. Key-words used to search were dependent on the database (see Fig. 2 for an example of the Embase search). Article references were hand searched and a search of relevant print and electronic journals was also conducted. Titles and abstracts of potentially eligible studies were screened by one researcher (LR) and ambiguous studies were discussed with two additional researchers (JMcV and RJW) and consensus reached.

Study selection

Qualitative and quantitative studies published in English that examined the effectiveness of working wrist splints amongst people with RA or the experiences and/or perceptions of patients and/or therapists or carers involved in the provision of working wrist splints to people with RA were included. Studies where less than 50% of participants

were diagnosed with RA and studies including children with juvenile idiopathic RA were excluded. Studies where splinting was included as part of an extensive OT treatment program were excluded as the effect of co-interventions could increase threats to internal validity. Studies where splints were used following surgery were also excluded as the primary purpose of splinting following surgery is to immobilize and facilitate healing. Studies addressing splints for the finger or thumb joints only or studies investigating pressure gloves were also excluded as these are not wrist splints. Outcomes of interest were identified as: pain, swelling, deformity, range of motion, dexterity, strength, function and quality of life with the most frequently occurring outcomes: function, strength, pain and dexterity being presented here.

Data extraction

The primary reviewer (LR) extracted data guided by the Cochrane Effective Practice and Organisation of Care Group data abstraction form (15).

Quality assessment and risk of bias

Each paper relevant for risk of bias assessment was independently assessed by two reviewers. A blinded rating of the methodological quality of the studies was carried out by the primary reviewer and then independently reviewed by a second reviewer (JMcV or JW). Any ambiguous issues were discussed and consensus reached. RCTs were analysed for methodological quality using the van Tulder Scale and risk of bias was assessed using the Cochrane Risk of Bias tool (16). Consensus was reached by discussion and the level of inter-rater agreement recorded as a Kappa coefficient.

RCTs were deemed to be of high quality if they scored at least 6/12 on the van Tulder Scale (1) and evidenced two of the following 4 cri-

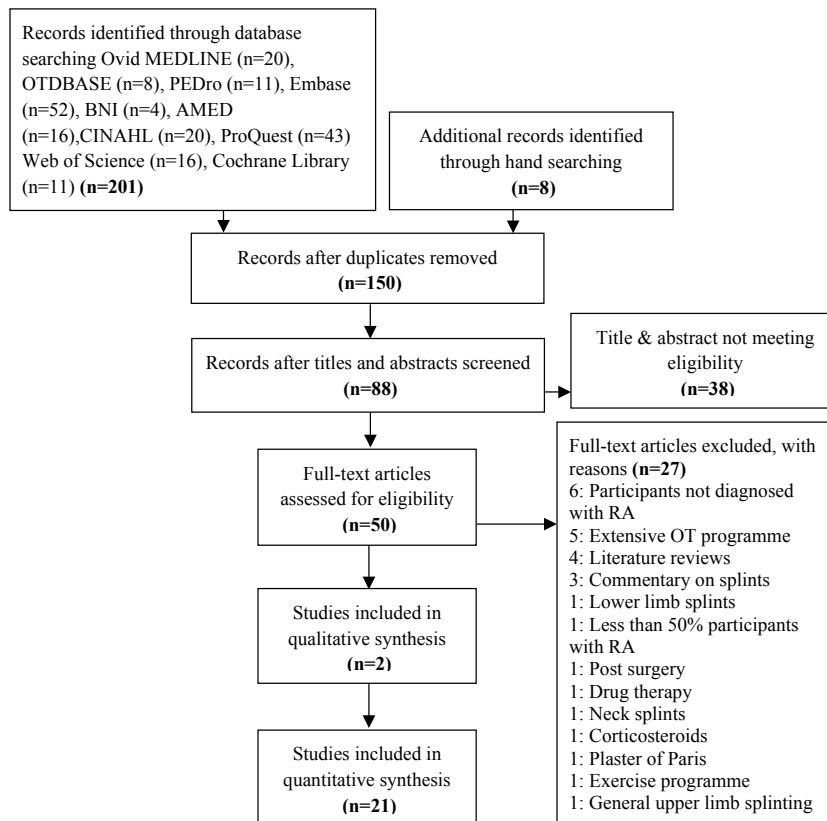


Fig. 1. Prisma flow diagram. Liberati A, Altman DG, Tetzlaff J, Mulrow C, Gøtsche PC, Ioannidis JP, et al. The PRISMA statement for reporting systematic reviews and meta-analyses of studies that evaluate health care interventions: Explanation and elaboration. PLoS Med 2009; 6: e1000100.

Database: EMBASE search strategy 1980–2012 week 39:
1 orthopedic equipment/ or brace/ or splint/ (16852)
2 orthos\$.mp. (37922)
3 orthot\$.mp. (23413)
4 exp orthotics/ (2548)
5 support.mp. (567390)
6 exp brace/ (5027)
7 strap.mp. (1011)
8 exp immobilization/ (40475)
9 1 or 2 or 3 or 4 or 5 or 6 or 7 or 8 (677801)
10 exp rheumatoid arthritis/ (109454)
11 exp ARTHRITIS/ or exp CHRONIC ARTHRITIS/ (250935)
12 systemic arthritis.mp. (86)
13 RA.mp. (46042)
14 10 or 11 or 12 or 13 (271362)
15 HAND MOVEMENT/ or HAND/ or HAND STRENGTH/ or HAND FUNCTION/ or HAND MUSCLE/ or HAND GRIP/ (35213)
16 WRIST/ or WRIST DISEASE/ (13130)
17 arm/ (26046)
18 upper extremity.mp. (11573)
19 upper limb.mp. (9928)
20 wrist joint.mp. (1055)
21 exp CARPAL JOINT/ or exp CARPAL BONE/ (5361)
22 15 or 16 or 17 or 18 or 19 or 20 or 21 (87706)
23 9 and 14 and 22 (355)
24 from 23 keep 30,34,83,85,88,97,114- 115,120,123,128-129,136-137,143,157-158,188,212,218- 219,221,223,226,230,232,235,237,240,242,246,253,257,277,281- 283,285,290,292-293,303,308,310,334,340,342,350-353,355 (52) *****

Fig. 2. Embase keyword search strategy.

teria: 1. Inadequate randomization 2. Non-blinding of assessors 3. No intention to treat analysis 4. No measurement of compliance. Medium quality studies were classified as achieving at least 6/12 on the van Tulder Scale and satisfying at least one of the 4 criteria above. Studies were deemed to be of low methodological quality if they scored less than 6/12 on the van Tulder Scale and/or satisfied one or fewer of the

4 listed risks to bias. Quality classifications were then combined with the criteria in Table I to summarize the strength of evidence for each outcome. Clinical relevance of RCTs was summarized using Guidelines from the Cochrane Collaboration Back Review Group (16) modified by Dorrestijn et al. (19) (Table I) and tailored to reflect items deemed applicable for trials involving splinting.

For studies of quasi-experimental and observational design (other design), methodological quality was assessed using the Cochrane Criteria of Methodological Quality (12). Methodological quality was judged as high if at least 4 internal validity measures, two descriptive and one statistical criterion scored affirmatively (12). Survey/questionnaire studies were assessed using the tool recommended by the Centre for Evidence Based Management (17). For qualitative studies an analysis of the research process and transparency in data analysis was guided by the Critical Appraisal Skills Programme (CASP) © Qualitative Critical Appraisal Tool (18).

Consequently, threats to bias were: inadequate randomization, non-blinding of assessors, no intention to treat analysis and no measurement of compliance. Medium quality studies were classified as achieving at least 6/12 on the van Tulder Scale and satisfying at least one of the 4 criteria above. Studies were deemed to be of low methodological quality if they scored less than 6/12 on the van Tulder Scale and/or satisfied one or fewer of the 4 listed risks to bias. Quality classifications were then combined with the criteria in Table I to summarize the strength of evidence for each outcome.

Data synthesis and analysis

Due to the heterogeneity of the studies in terms of settings, splint interventions and outcome measures it was not possible to carry out a meta-analysis. As recommended by the Centre for Reviews and Dissemination (20), a narrative approach to the synthesis of data from the quantitative studies was undertaken. A summary of the characteristics and findings of the included studies was tabulated (Table S1¹) and analysis of the relationships within and between studies was combined with overall assessment of the robustness of evidence (20). Where appropriate and possible, the magnitude of the change between groups was measured using Cohen's *d* (effect size) where *d*=0.2 was considered a small effect size, *d*=0.5 medium and *d*=0.8 large effect size.

A meta-ethnographical approach involving the selection, comparison and analysis of studies was used to synthesize qualitative evidence

¹<https://doi.org/10.2340/16501977-1804>

Table I. Best evidence synthesis guidelines

Strong evidence	Provided by consistent ^a statistically significant findings in outcome measures in at least two high quality RCTs ^b
Moderate evidence	Provided by statistically significant findings in outcome measures in at least one high quality RCT ^b OR Provided by consistent ^a , statistically significant findings in outcome measures in at least two medium quality RCTs ^b
Limited evidence	Provided by statistically significant findings in at least one medium quality RCT ^b OR Provided by consistent ^a , statistically significant findings in outcome measures in at least two low quality RCTs ^b
No or insufficient evidence	If results of eligible studies do not meet the criteria for one of the levels of evidence listed above (e.g. no statistically significant findings) OR In case of conflicting (statistically significant positive and statistically significant negative) results among RCTs OR In case of no eligible studies

^aFindings are considered consistent if they point in the same direction.

^bIf the number of studies showing evidence is lower than 50% of the total number of studies found within the same category of methodological quality, 'no evidence' is stated.

RCT: randomised controlled trial.

Dorrestijn O, Stevens M, Winter J, van der Meer K, Diercks R. Conservative or surgical management for subacromial impingement syndrome? A systematic review. *J Shoulder Elb Surg* 2009; 18: 652–660.

(21). Quantitative and qualitative syntheses were then combined to compare and contrast the interventions evaluated in the quantitative studies with the qualitative data.

RESULTS

The database and hand search resulted in 150 titles which were reduced to 88 by application of the inclusion and exclusion criteria for eligibility screening. Following screening 23 studies (1981–2009), involving 1,492 participants were eligible for inclusion (Fig. 1).

Description of studies

Studies were classified as RCTs ($n=9$) (22–30), experimental ($n=4$) (31–34), observational ($n=3$) (35–37), survey/questionnaires ($n=5$) (38–42) and qualitative studies (20) ($n=2$) (43, 44). Seventeen studies presented descriptive statistics relating to the age of the participants with a mean age of 55.5 years from 16 of these. One study (26) provided the median age, and 4 (36–39), did not state the age of the participants. Two studies did not specify participants' gender (36, 39) and the gender of the rheumatologists surveyed in the study by Spoorenberg et al. (42) was not stated. From 12 studies (22, 23, 27, 28, 30–35, 40, 42) mean disease duration was 9.3 years, median was given for one study (26) as 3 years and in 6 not stated (25–27, 32, 39, 43).

The most frequently investigated outcomes throughout all studies were hand function or perception of hand function ($n=9$ studies) (22, 23, 25–28, 20, 31, 34), grip or pinch strength ($n=9$ studies) (23, 24, 25, 29–33), pain ($n=8$ studies) (25–30, 33, 34), dexterity ($n=4$ studies) (32, 34, 35, 37).

Five cohort surveys investigated: splint compliance (41), factors affecting patient compliance (38) and usage of wrist splints (40, 41, 42). Two qualitative studies using phenomenological methodology investigated the use and preference of wrist splints (44) and the determinants of the use of wrist splints (43).

With respect to outcome measures a total of 31 outcome measures were used to measure function, grip strength, pain, dexterity, ROM and disease activity. Follow up time varied across studies from immediate checking effects of the splint (24) to checking effects one year following use (39). In cross-over trials splint use was measured after one, two or four weeks use with a one week wash out between splints (22, 25, 28, 29, 34). Table II presents a summary of the splinting parameters showing inconsistency in the duration and frequency of splint wearing regimes.

Risk of bias assessment within studies

Results of the Cochrane Risk of Bias tool and the van Tulder Scale for the included RCTs are shown in Tables III and IV. The mean score for the van Tulder Scale was 5.6/12 (range 4–7, moderate quality (45)). Using the Cochrane Risk of Bias tool 5 studies obtained a score of 6 or more, indicating a low risk of bias (22, 25, 27, 28, 30). Four studies scored less than 6, indicating substantial bias (23, 24, 26, 29).

For the van Tulder Scale, inter-rater agreement between reviewers for all items on each scale was examined and average Kappa coefficients were calculated to be 0.57 (95% confidence interval; CI 0.43–0.71). The Kappa coefficient for the Cochrane Risk of Bias tool was 0.56 (95% CI to 1.33–2.24). Both indicate moderate agreement between reviewers (46).

Three studies (31, 33, 34) of quasi-experimental and observational design had high methodological quality and 4 (32, 35, 36, 37) low methodological quality (Table V). It was unclear in these 4 low-quality studies whether the outcome assessor was involved in treatment or if the timing of the outcome assessment in all participants was comparable.

Risk of bias across studies

Fig. 3 displays the overall risk of bias across the RCTs. Common methodological shortfalls within RCTs were inadequately concealed treatment allocation ($n=9$) (22, 23, 24–30) and lack of blinding of assessors ($n=6$) (22, 23, 24, 26, 27, 30). Additional failings noted were a lack of intention to treat analysis ($n=8$) (23, 24–30) and the non-avoidance of co-interventions ($n=9$) (22, 23, 24–30) such as pharmacotherapy regimens or physiotherapy.

Within the quasi-experimental and observational studies ($n=7$) (31–37) only one study explicitly stated that the outcome assessor was not involved in treatment (33). Short and long-term follow up measurements were absent across most studies with only one (31) performing short-term follow-up measurements.

The two qualitative studies (43, 44) did not detail the relationship between the researcher and participants, it was also unclear whether ethical issues had been considered. However, the research was judged to be valuable overall, taking the findings into consideration in relation to existing knowledge and its contribution to that knowledge.

Function/perception of function

Nine studies evaluated the effectiveness of a variety of working wrist splints on a range of functional tasks (22, 23, 25–28, 30, 31, 34). Two studies reported improvement in function (23, 28) but only one reached statistical significance ($p<0.05$) with a large effect size for leather splints ($d=0.8$) and medium effect size for fabric splints ($d=0.5$) (28). One high quality RCT (28) found that both a custom made leather splint and a pre-fabricated splint improved function, with the leather splint being superior to the pre-fabricated splint ($p=0.008$, $d=0.8$). A low quality RCT (23) comparing 3 pre-fabricated splints found no significant difference between the splints with respect to measures of function. However, there was a patient reported improvement in the ability to perform some tasks such as carrying heavy items and driving with the use of all 3 splints. Six studies reported no change in function with use of splints (25–27, 30–32), 4 of these were RCTs, 3 of high (25, 27, 30) and one of low methodological quality (26). Two quasi-experimental studies, one of high (31) and one of low methodological quality (34) reported both no change

Table II. Frequency and duration of splint use

Frequency and duration (reference)	(Reference) splint type(s) studied
Frequency of splint wear (How often)	(22, 23, 44) Smith & Nephew, Roylan® D-ring & Kendall-Future #33 pre-fabricated wrist splints
Tested at Immediate wear (29, 33, 34, 36, 40)	(37, 38) Lightcast fibreglass splint
Daily (24, 28, 37, 38, 43)	(24) Rehband™ elastic wrist orthosis
At least 4 h/day (22, 23, 44)	(25) Futuro™ and Spenser wrist splints
As much as possible, day and night (42)	(26) Custom made thermoplastic and custom made two-way stretch elastic fabric splints
As much as possible day only (31)	(27) Futuro™ cock-up splint, Orhoplast/Plaster of Paris wrist immobilisation splint
At own discretion (32, 39)	(28) Roylan® wrist splint, Custom made leather splint, Anatomical technologies ©elastic wrist splint
While performing everyday activities in accordance with therapists advice (26, 27)	(29) Futuro™, Roylan®-D, Medical specialties wrist splints
While resting (27)	(30) Futuro™ splint
Not stated (25, 33, 35)	(31) Roylan® D-ring, GM005H, GM008 or GM009 (GM Medical bracing) wrist splints
Duration of each splint wearing period (For how long each time)	(32) Custom made polyethylene gauntlet wrist splint
For outcome measurement only (29, 33, 34, 36, 40)	(33) Liberty™ D ring, Dynamic hinged wrist resist, Dynamic spiral custom made
During pain or discomfort inducing activities (24, 28)	(34) Camp soft volar wrist splint, Rehband™ soft volar wrist splint
Intermittent use (22, 23, 44)	(35) Futuro™ Kendall #33
At least 2 h a day (31)	(36) Leather carpometacarpal band, Transverse arch felt pad
Average of between 3–6 h with 1 subject wearing all night (32)	(39) Functional wrist splint
On a daily basis (35)	(40) Dorsal sans splint XR, Palmar sans splint pink, Gauntlet plastazote®, pre-fabricated cotton elastic wrist splint
Range from 24h/day to never (25–27, 37–39, 43)	(41) Leather gauntlet, elastic commercial gauntlet, custom made dorsal thermoplastic, Custom made volar thermoplastic
Not stated (30, 42)	(42) Synthetic thermolyn® wrist orthosis, Futuro™ wrist splint
Duration of overall splinting period (How long overall)	(43) Pre-fabricated fabric working wrist splint
For outcome measurement only (33, 34, 36, 40)	
6 months (24, 28)	
12 weeks (22, 23, 39, 44)	
5 weeks (30, 42)	
4 weeks (27, 31)	
4 months (32)	
1 week (35)	
Approximately 9 months (37)	
12 months (40)	
Between 1 and 12 months (43)	
Not stated/insufficient detail (29 ^a , 25, 38)	

^aGiven a splint anything up to 24 months earlier, measurement with and without splint.

(coin manipulation, shears task) and a decrease (ability to write, screwdriver task) in function with the use of splints. The remaining high quality RCT (22), reported statistically significant findings between splinted and un-splinted hands in favour of the un-splinted hand on a range of functional tasks (e.g. writing, $p < 0.001$, $d = 0.1$) card turning, $p < 0.001$, $d = 0.3$).

Grip strength

Nine studies evaluated grip and/or pinch strength (23, 24, 26, 28–33). One low quality RCT (26) and one low quality quasi-

experimental study (32) reported improved pinch strength with the use of a variety of pre-fabricated splint and custom made splints, with the magnitude of the effect of splinting on pinch ranging from $d = 0.3$ to $d = 0.9$ in one study (32). Five studies (26, 28, 30, 31, 33) reported an improvement in grip with the use of a splint, however, only in one of these studies was that difference statistically significant ($p < 0.001$, $d = 0.3$ and $d = 0.4$) (28). Conversely, one low quality RCT (23) and low quality quasi-experimental study (32) reported significant decrease in grip strength with the use of splints. One study (23) found grip

Table III. Cochrane Risk of Bias for randomised controlled trials

Authors, year (ref)	Random Sequence generation	Concealed allocation	Blinding of key personnel	Incomplete outcome data addressed	Free of selective outcome reporting	Free of other bias
Anderson & Maas, 1987 (24)	Yes	Unclear	No	No	No	No
Haskett et al., 2004 (25)	Yes	No	No	Yes	Yes	Yes
Kjeken et al., 1995 (26)	Yes	Unclear	No	Yes	Unclear	Yes
Pagnotta et al., 2005 (27)	Yes	Unclear	No	Yes	Unclear	No
Stern et al., 1996 (22)	Yes	Unclear	No	No	No	Yes
Stern et al., 1996 (23)	Yes	Unclear	No	Yes	No	Yes
Thiele et al., 2009 (28)	Yes	Yes	Yes	Yes	Yes	Yes
Tijhuis et al., 1998 (29)	Yes	Unclear	Yes	Yes	Yes	Yes
Veehof et al., 2008 (30)	Yes	Yes	No	Yes	Yes	Yes

Table IV. The van Tulder Scale for randomised controlled trials

Authors, year (ref)	1 Adequate randomisation	2 Concealed allocation	3 Patient blinded	4 Therapist blinded	5 Assessor blinded	6 Drop out accounted	7 ITT	8 Free of selective outcome report	9 Similar baseline	10 Co-interventions avoided	11 Compliance acceptable	12 Outcome timing similar	Total
Anderson & Maas, 1987 (24)	Yes	Unclear	No	No	No	Yes	Unclear	No	Yes	Unclear	Unclear	Yes	4
Haskett et al., 2004 (25)	Yes	Unclear	No	No	Yes	Yes	Unclear	Yes	Yes	Unclear	Yes	Yes	7
Kjeken et al., 1995 (26)	Yes	Unclear	No	No	No	Yes	Unclear	Yes	Yes	No	Unclear	Yes	5
Pagnotta et al., 2005 (27)	Yes	Unclear	No	No	No	Yes	Unclear	Yes	Yes	No	Yes	Yes	6
Stern et al., 1996 (22)	Yes	Unclear	No	No	No	Yes	Yes	Yes	Yes	Unclear	Yes	Yes	7
Stern et al., 1996 (23)	Yes	Unclear	No	No	Unclear	Yes	Unclear	Yes	Yes	Unclear	Unclear	Yes	5
Thiele et al., 2009 (28)	Yes	Unclear	No	No	Yes	Yes	Unclear	Yes	Yes	Unclear	Unclear	Yes	6
Tijhuis et al., 1998 (29)	Unclear	Unclear	No	No	Yes	Yes	Unclear	Yes	Yes	Unclear	Unclear	Unclear	4
Veehof et al., 2008 (30)	Yes	Unclear	No	Unclear	No	Yes	Unclear	Yes	Yes	No	Yes	Yes	6

ITT: intention to treat.

Table V. Cochrane criteria of methodological quality for quantitative studies of other design

Authors, year (ref)	a	b	c	d	e	f	g	h	i (a)	i (b)	j	k	l	m	Score	Methodological quality
Backman & Deitz, 1988 (31)	Yes	Yes	No	No	Unclear	Yes	Yes	Yes	Yes	No	Yes	Yes	No	Yes	4, 4, 2	High
Burtner et al., 2003 (32)	Yes	Yes	Unclear	Yes	Unclear	Yes	Yes	Yes	No	No	Unclear	Yes	No	Yes	3, 3, 2	Low
Nordenskiöld, 1990 (33)	Yes	Unclear	Yes	Yes	Yes	Yes	Yes	Yes	No	No	Unclear	Yes	No	Yes	5, 2, 2	High
Cytowitz-Kapilowska et al., 1999 (35)	Yes	Yes	Yes	Unclear	Unclear	Yes	No	Unclear	No	No	Unclear	Yes	No	Yes	2, 2, 2	Low
Gumpel & Cannon, 1981 (36)	Yes	Yes	Unclear	Yes	Unclear	Yes	Yes	Yes	No	No	Unclear	Yes	No	No	2, 3, 1	Low
Nicholas et al., 1982 (37)	No	Yes	Unclear	Unclear	Unclear	Yes	Yes	No	No	No	Unclear	Yes	No	No	1, 2, 1	Low
Pagnotta et al., 1998 (34)	Yes	Yes	Yes	Yes	No	Yes	Yes	Yes	No	No	Yes	Yes	No	Yes	5, 3, 2	High

Patient selection

a) were the eligibility criteria specified?

Interventions

b) was the intervention explicitly described?

c) were co-interventions avoided?

d) was the compliance acceptable?

Outcome measurement

e) Was the outcome assessor not involved in the treatment?

f) were the outcome measures relevant?

g) were adverse effects described?

h) was the withdrawal/drop out rate described and acceptable?

i) timing follow-up measurements:

a) was a short-term follow-up measurement performed?

b) was a long-term follow-up measurement performed?

j) was the timing of the outcome assessment in all patients comparable? Statistics

k) was the sample size of the patient group described?

l) did the analysis include an intention-to-treat analysis?

m) were point estimates and measures of variability presented for the primary outcome measures?

Internal validity – c, d, e, f, h, j. Descriptive criteria – a, b, g, i. Statistical criteria – k, m. Occupational therapy for rheumatoid arthritis (13).

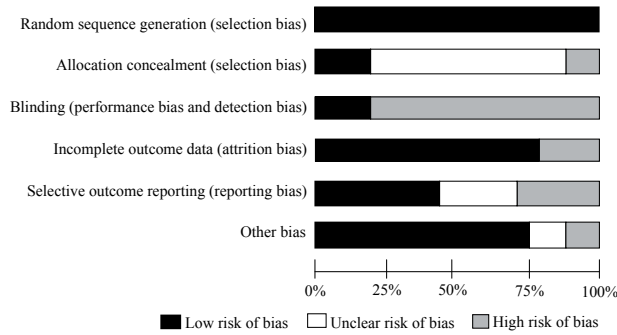


Fig. 3. Risk of bias across randomized controlled trials (n=9).

significantly reduced with the use of 3 different splint types compared to no splint ($p=0.001$); another (32) reported similar findings with the use of a hinged splint ($p=0.03$).

Effect of working wrist splints on pain

The effects of the most commonly investigated outcomes are summarized in Table VI. Of the 8 studies that evaluated pain, 4 were high (25, 27, 28, 30) and two were low quality RCTs (26, 29). High quality RCTs reported statistically significant between group, short-term (2–4 weeks) reductions in pain using a range of pre-fabricated and custom made splints. Two studies (25, 28) compared custom made leather with various pre-fabricated splints, although all reduced pain, the custom made leather splints in both studies were significantly more effective, ($p=0.001$, $d=0.79$). One high quality quasi-experimental study (33) reported an immediate reduction in pain of 39% ($d=0.7$), 42% ($d=0.7$) and 52% ($d=0.8$) when carrying out 3 activities of daily living (ADL). One high quality RCT (27) reported a statistically significant reduction in pain ($p<0.05$) with the use of a pre-fabricated splint in 5/13 functional tasks. The remaining low quality RCTs and quasi-experimental

Table VI. Summary of findings for: impact of splinting on most common outcome measures

Outcomes	Authors, year (Ref)	Direction of finding	Statistically significant	Measures
Function/ perception of function	Backman & Deitz, 1988 (31)	–	N/R	Ability to write
		=	N/R	Coin manipulation
	Haskett et al., 2004 (25)	=	N/R	Arthritis Hand Function Test
	Kjeken et al., 1995 (26)	=	Yes	Health Assessment Questionnaire
	Pagnotta et al., 2005 (27)	=	Yes	BTE work simulator
	Stern et al., 1996 (22)	–	Yes	Jebsen-Taylor Test
	Stern et al., 1996 (23)	+	No	Farm chores, yard work & some housework
		–	No	Some self care tasks, writing & typing
	Thiele et al., 2009 (28)	+	Yes	COPM
	Veehof et al., 2008 (30)	=	No	DASH & SODA-S
Grip/pinch strength	Pagnotta et al., 1998 (34)	–	Yes	Screwdriver task (BTE work simulator)
		=	Yes	Shears task (BTE work simulator)
	Anderson & Maas, 1987 (39)	–	No	Sphygmamometer (grip)
	Kjeken et al., 1995 (26)	+	N/R	Sphygmamometer, Mannerfelt Intrinsicmeter (Tripod)
	Stern et al., 1996 (23)	–	Yes	Jamar Dynamometer (grip)
	Thiele et al., 2009 (28)	+	Yes	Jamar Dynamometer (grip)
	Tijhuis et al., 1998 (29)	=	No	Martin Vigorimeter (grip)
	Veehof et al., 2008 (30)	+	No	Martin Vigorimeter (grip)
	Backman & Deitz, 1988 (31)	+	No	Martin Vigorimeter (grip, tip & tripod)
	Burtner et al., 2003 (32)	(Hinged) –	Yes	Jamar Dynamometer (Grip)
Pain	Nordenskiold, 1990 (33)	(Spiral) +	Yes	Jamar Dynamometer (2-point pinch)
		+	N/R	Grippit (grip)
	Haskett et al., 2004 (25)	+	Yes	Visual Analogue Scale
	Kjeken et al., 1995 (26)	+	N/R	Visual Analogue Scale
	Pagnotta et al., 2005 (27)	+	Yes 5/13 tasks	Visual Analogue Scale
	Veehof et al., 2008 (30)	+	Yes	Visual Analogue Scale
	Nordenskiold, 1990 (33)	+	N/R	Visual Analogue Scale
	Pagnotta et al., 1998 (34)	+	No	Visual Analogue Scale
	Thiele et al., 2009 (28)	+	Yes	AUSCAN
	Tijhuis et al., 1998 (29)	+	No	Visual Analogue Scale
Dexterity	Stern et al., 1996 (22)	–	Yes	The Purdue Test
	Backman & Deitz, 1988 (31)	–	No	Writing speed, coin manipulation
	Burtner et al., 2003 (32)	(Spiral) +	Yes	Nine hole peg test
	Pagnotta et al., 1998 (34)	=	No	Nine hole peg test (hinged, static and no splint)
		–	Yes	Jebsen Hand Function Test

+: positive effect on outcome; -: negative effect on outcome; =: no effect on outcome; N/R: not recorded; BTE: Baltimore Therapeutic Equipment Co.; COPM; Canadian Occupational Performance Measure; AUSCAN: Australian/Canadian osteoarthritis Hand Index; DASH: Disabilities of the Arm, Shoulder and Hand; SODA-S: Sequential Occupational Dexterity Assessment (short version); ESR: erythrocyte sedimentation rate.

studies (26, 29, 34) all reported a decrease in pain with the use of various splints. Kjekken et al. (27) was the only study to assess pain with or without splinting at long-term follow up (6 months).

Dexterity

Four studies measured dexterity (22, 31, 32, 34), two of which found a statistically significant decrease in dexterity with the use of a splint (22, 34). One study (34) reported that the average time to complete all 7 tasks on the Jebsen Hand Function Test was longer (4.4 s) when wearing a pre-fabricated splint when compared to no splint ($p=0.0086$, $d=0.2$). Although Stern et al. (22) found no difference between 3 pre-fabricated splints, all 3 reduced finger dexterity ($p<0.001$). There was no difference in dexterity in an alternating treatment design study (31), with and without a custom made splint on coin manipulation. However, conversely these authors found writing dexterity reduced with the use of the splint. Only one specific splint (spiral splint) within the study by Burtner et al. (33) was found to significantly improve dexterity ($p=0.03$) measured using the 9-hole peg test.

Summary of strength of evidence

To construct best evidence synthesis for quantitative studies 5 RCTs were rated as high quality (22, 25, 27, 28, 30) and four as low quality (23, 24, 26, 29). There is strong evidence that working wrist splints reduce wrist pain, and the magnitude of this reduction was found to be medium. This is supported by consistent, statistically significant differences in three high quality RCTs (25, 28, 30), further supported by one high quality quasi-experimental study (33). There is moderate evidence that grip strength was improved and dexterity impaired with the use of a working wrist splints (22, 36). There is insufficient evidence in relation to the effect of working wrist splints on function due to conflicting results (27, 28, 30).

Meta-ethnographical analysis of qualitative studies

Two qualitative studies using a phenomenological design investigated the use and preference of wrist splints (44) and the determinants of wrist splint use (43). Additionally 5 cohort studies investigated wrist splint compliance (38, 39) and usage of wrist splints (40, 41, 42). Several experimental studies (23, 25, 30, 36, 37) provided additional qualitative data by reporting questionnaire results in addition to the primary outcomes measured.

Related themes and concepts from study participants and researchers within the studies were extracted, compared and interpreted to build key translations (Table VII).

Themes

Prescription, knowledge and splint use. Spoorenberg et al. (43) found that 93% of rheumatologists advised patients to use their splints often or almost always during activity and 11% advised patients to use it at night. Another study (43) found that most participants were aware of the purpose of their splints, although those who had inaccurate knowledge tended not to return to the prescriber for further advice. Several studies found that

splint use was explicitly linked to patients' perceptions of the seriousness of their symptoms (38, 40, 41, 43, 44). Non-use was also evident in observational studies (37, 38). The most commonly cited reason for use of the splint was for the reduction of pain and swelling (25, 33, 40, 42, 43, 30, 38, 44).

The reported effect of splinting on function varied. In one study (43), the majority of participants experienced a decrease in function with use of the splint, however, others cited improved functional ability with splint use (39–44). Common functional tasks for which the splint was removed were 'wet' and 'dirty' tasks (43) with two studies reporting the inability to fit gloves over the splint a reason for non-use (23, 43). Contrary to this Agnew & Maas (39) found a high percentage (71.4%) of their respondents ($n=130$) used their splint when washing dishes. One study (44) reported splint use for performing heavy tasks such as farm chores, mowing lawns and raking leaves, and another (41) found differences between the type of splint prescribed as a deciding factor for attempting to carry out tasks such as gardening or hanging out clothes.

The negative effect of working wrist splints on dexterity was commonly reported (38) where participants wore their splints for activities which required greater strength and less dexterity. Three studies reported increased strength (38, 43, 44). In another study no perceived change in grip strength was also reported (43).

Adherence and social factors. A survey of rheumatologists and RA patients (42) found that 16/21 participants advised to wear their splint when physically active adhered to this advice. Six participants were advised to wear at night with none complying. Another survey (39) found that over 70% of 265 Australian patients wore their splint as advised. However, non-adherence is common; 19.4% (7/36) of participants in one (38) and 42% (54/128) in another survey (40) did not wear their splint at all. Decreased functional ability (43), difficulty with using and having no symptoms (40), were cited as reasons for non-use.

The social environment was also a consideration (43, 44). The splint was felt to prevent people shaking hands, often attracted unwanted attention, staring and questions (44). Family and partners were also reported as influencing wear in some situations (44). Characteristics which deemed certain splints to be unsuitable for males were reported as appearance and poor suitability to 'male' tasks.

Splint attributes. Splint appearance was deemed to be largely irrelevant in some studies with participants more concerned with their effectiveness (39, 43, 44). However, 14 of 32 participants found their splint unwieldy and 9 thought it ugly (42). When participants in an RCT (28) ($n=47$) comparing three splint types were questioned on satisfaction with splint appearance, 91%, 75% and 72% of participants were satisfied with the appearance of three different splints.

Combined synthesis. The use of working wrist splints was reported to be explicitly linked to the seriousness of symptoms such as pain. This appears to support the findings of the quantitative literature. The inconclusive effect of working

Table VII. *Meta-ethnographical analysis of qualitative studies. Reciprocal translation*

	Primary themes (views of participants)	Secondary themes (interpretations of authors)	Key translations
Prescription & knowledge	Purpose of splint (satisfied with information given, not enough information given, not returning to clinic to clarify information). Incorrect information about splint use and care. Choice of splint on prescription (no choice, choice of two types)	Clinical study results emphasise importance of informing patients the time taken to become accustomed to splint, benefits and drawbacks, effects on function. Health professionals should consider specific attributes when assessing different brands. No single style of splint suits all; single style decrease operating costs but limits the likelihood of optimally matching patient to splint. Should try on and perform functional tasks in clinic before deciding on a splint. Using an independently purchased splint may aggravate symptoms as each splint needs adjustment. Patients know their preferred splint within a few minutes	More time spent on initial prescription • Choice of splint on prescription • Functional assessment with splint • Detailed written and verbal information
Splint use	Linked to: perception of seriousness of symptoms (pain, swelling, tingling), perception of usefulness of splint (increase function, ability to decrease symptoms, immobilisation of wrist allows greater use of whole upper limb, increased strength, not enough range of motion allowed for dressing, how comfortable splint is). Balance between benefits and drawbacks	Splint use dependent on seriousness of symptoms (use splint to primarily reduce symptoms). Other reasons for use (support and or immobilise wrist). Use related to intentional decisions. Detrimental and beneficial effects reported for functional ability largely in accordance with other studies. Conflicting results may be attributed to differences in daily activities and time between fitting splint and measurement. Perceived functional ability likely to be task dependent. Hierarchy of subjective attributes used to determine splint choice when choice of 3 given	Primary use of splint is to decrease symptoms of pain and swelling • Task dependent use • Patients seek varying degrees of mobilisation/immobilisation
Compliance	Daily use, nocturnal use, non-use. Linked to splint decreasing functional ability, performing dirty and or wet tasks, unable to fit gloves or long sleeved tops over splint, unable to wear a watch, decreased dexterity with use. Decreased driving ability. Perceived need for wrist support versus irritation of immobilisation. Do not wear all the time as afraid of wrist becoming stiff	Non-compliance related to perceived disadvantages of splint (decreased functional ability, dirty/wet activities, concerns with comfort and or fit). Knowing the determinants of splint use allows measures to be taken to increase compliance. Educational and behavioural strategies should include: shared outcome expectations, verbal and written instructions, monitoring adherent behaviour, evaluation of the regime. Compliance less likely if only one choice of splint	Wide variance in amount of time used • Patient choice will affect compliance • Patient knowledge will affect compliance • Monitoring patients will affect compliance
Splint attributes	Gets wet and dirty easily, light colour dirties more easily, long drying time if wet, velcro sticks to and frayed clothing, stitching unravelled. Appearance (neutral on appearance as long as it works). Different opinions on different designs of splint (positive and negative, like and dislike padded material, heat increase with padding). Fit and comfort variable (positive about fit and comfort, hard metal bar uncomfortable, sweaty, loose or uncomfortable tight, cannot tighten at wrist, paresthesia after wearing). Metal bar (stay hems to deep or narrow to firmly fix metal strap or allow removal). Web space (too wide, chaffing 1 st web space)	Disadvantages (long drying time, unpleasant physical contact with the splint because of hard metal stay). Design elements evoked strong responses: contact with dorsal MCP's, overcast finishing, wide adjustable web space. Critical of lack of material to allow closure at proximal forearm. Temperature less important to most but warmer splints rejected when heat was a critical issue. Appearance and ability to keep clean not a major concern and rarely cited for accepting or rejecting a splint. Patients are likely to take but not use an uncomfortable splint	Choice and will allow patient examination of individual attributes and less likely to lead to rejection of a splint • Patients more concerned with utility than appearance but will reject a splint on comfort • Design aspects could be improved (stay hems, length of forearm, width of web space, length of dorsum, straps)
Social factors	Prevents people squeezing hand when shaking hands. People offer to help when splint on. Attracts unwanted attention (staring, asking what is wrong). Reactions of society did not influence use. Able to lift grand/children without pain. Perceived by partners to wear/not wear in some situations. Do not wear going to parties or visiting people. Skin bulging between straps (indication they were overweight)	Social cognitive theory and theory of planned behaviour suggest social environment an important determinant – not a major influence in decision to wear/not wear in this study (Stern). Other people trying to prevent wrist overburdening (Less hand squeezing, opening doors). Overweight people did not bring up the fact that straps bulged – perhaps embarrassed or assumed unique to someone of their size	Splint used as a warning to others of pain Social environment not a major influence on use

Table VII. *Contd.*

	Primary themes (views of participants)	Secondary themes (interpretations of authors)	Key translations
Ease of use	Difficulty don/doffing for some. Need support to put on (table to support arm, use teeth to undo straps, cannot remove independently). Difference in straps (d-rings difficult to re-thread with morning stiffness, difficulty lining straps up for correct tension d-rings easier). Choose not wear rather than continual on/off	Questions the notion that additional forearm length and wide adjustable straps improve comfort and fit	<ul style="list-style-type: none"> Design aspects could be improved to affect compliance Choice and assessment at prescription will clarify ease of use
Side effects/additional effects	Improved sleep (resting pain decreased), prevents wrist overloading, increased security, feeling of protection, decreased palmar sensation impairing grip, fatigue at shoulder and elbow due to immobilised wrist, distracting tactile stimulation on dorsum of MCP's, distal edge constricting MCP's	Fear of weakening/stiffening the wrist. Advantages (rest resulting from immobilisation)	<ul style="list-style-type: none"> Day time use can decrease resting pain, in turn improving sleep Clear written and verbal instructions needed Design aspects could be improved
Expectations	Positive and negative expectations for splint reducing symptoms	Importance of promoting realistic expectations to increase adherence. Check expectations are reasonable	Expectations discussed at initial assessment and prescription

wrist splints on function was also evident with patients giving variable accounts of use and non-use for particular functional activities. The impact of splint use on dexterity and strength was also highlighted in the qualitative literature and again supports findings from the quantitative literature that dexterity is impaired with splint use. Additional factors such as ease of use, cosmesis and the social environment appear to be linked to splint use, however, this requires further exploration in order to reach definitive conclusions.

DISCUSSION

The aim of this mixed methods systematic review was to determine the effectiveness of working wrist splints in adults with RA. The results of the analysis of the 23 studies in this review suggest that working wrist splints reduce pain in patients with RA. In addition, the synthesis of the qualitative studies confirmed that the primary use of splints by people with RA is to decrease pain and swelling. This finding is accepted with the caveat that results are based on relatively few studies which are of variable quality. The results also suggest that there is moderate improvement in grip but an inconclusive effect on function with splint use, and it appears that dexterity can be negatively affected. The synthesis of qualitative data suggests that splint use is task dependent. This may reflect the effect of splint use on dexterity and therefore use or non-use becomes a personal decision based on experience of use for individual functional tasks.

The wide variety of splint types and variability in disease duration coupled with often inadequate detail on precise wearing regimes, including immediate versus longer term wear, prevent definitive conclusions about which splint types and wearing regimes are associated with better outcomes.

Working wrist splints impact on function appears to be task specific. Tasks for which function was improved with splint use across studies were tasks where strength was required (lifting, pushing, and pulling) such as vacuuming, yard sweeping, lifting heavy objects. It can be argued that this is strongly linked to the studies which found that splints increase grip strength. The link between decreased dexterity and ability and reported use of splints for functional tasks which require finer manipulation is also apparent. Patients tended not to wear their splints for tasks where dexterous manipulation was required.

Of particular note, this review has identified that the terminology used to describe functional activity of the hand or upper limb as a whole is inconsistent across studies. Common terms included: hand related activities, dexterity, upper limb function, applied dexterity, applied strength, fine motor tasks, hand and upper extremity functions, and functional activities. Further, the subtle interconnection between hand function and upper limb function is not made explicit across studies and a gap in the literature with respect to the definition of upper limb function and its measurement is apparent. Stern et al. (22) differentiated between dexterity and hand function based on the size of objects being manipulated. Assessments using objects smaller than 2.5 cm are considered finger dexterity tests. Those using objects larger than 2.5 cm are considered manual dex-

terity and hand function tests and measure the speed of hand use across object sizes, often simulating functional activities including upper limb function. It could be argued the latter translates to primarily upper limb function rather than solely hand function. Difficulty in extracting the detail of working wrist splints' impact on function and in particular upper limb function is further complicated by the intricate link between pain and ability to carry out functional activities.

There was a diverse range of outcome measures used, including both standardised and non-standardised measures, which, to some extent, hampered meaningful comparisons to be made.

The range in disease duration within and between the investigated studies does not allow definitive conclusions to be drawn about the optimum time for splint prescription. Treatment guidelines (2, 8, 9) highlight the need for early intervention and as evident in the qualitative synthesis improved education and prescription protocols.

This is the first mixed methods systematic review to evaluate the effectiveness of working wrist splints in the treatment of people with RA. Previous reviews evaluating a range of upper and lower limb splints have concluded that working wrist splints have no positive effect on pain relief (10), that splints in general can decrease pain (12, 13, 49) and improve strength (13, 49), but that they may decrease hand movements (13). In agreement with the current review, previous systematic reviews (11, 12, 47–49) highlight the limited evidence for the effectiveness of working wrist splints in improving range of motion, grip strength or slowing down of deformity. Methodological weaknesses such as small sample sizes, large variations in duration of disease within studies and inconsistencies in reporting are reinforced.

Strength and limitations of current review

Restricting the search to English language articles, and excluding conference proceedings may have resulted in the omission of relevant research. Further no formal mechanisms, such as funnel plots, were used to identify if publication biases affected results. A narrative approach to the synthesis of quantitative studies provides an auditable process to address potential bias in relation to the identification and synthesis of studies. This has been argued as producing reliable and generalizable conclusions (50) and highlights key messages from the literature. However, over-interpretation of the data is recognized as a limitation of this approach. Also of note is the inclusion of cross-over studies which may lead to inconclusive or biased results if the methodology is not carefully analyzed or the number of participants is very few (29), since it does not truly compare interventions between groups but within subjects.

There are a wide range of splints used with patients with RA. However, the focus of this literature review is on working wrist splints and therefore other splint types were excluded. Studies investigating splints used following surgical procedures were excluded as the use of this splint following surgery is primarily to allow for healing of anatomical structures. Splints used as part of extensive OT treatment programmes were also excluded as the inherent effect of co-interventions would increase the likelihood of threats to internal validity.

While there have been previously published reviews on this topic (10, 11, 12, 13, 18, 48, 49), this current review has systematically examined the full breadth of the literature, allowing for additional studies, of all methodologies to be included, which give a richer, more contextualized interpretation of the data. Also included are studies which have been carried out since the completion of previous reviews (28, 30, 40, 43).

Implications for future research

Future studies should meet basic requirements that minimize selection and detection bias (adequate randomization and assessor blinding). Studies should be adequately powered with a combination of validated outcome measures in order to accurately capture effect. Objective measures of global upper limb functional activity should be considered and combined with subjective measures of pain and functional activity. There is also a need for more studies examining the human dimensions and experiences of both the consumers and providers of working wrist splints.

Conclusion

This review has demonstrated that working wrist splints reduce pain in patients with RA. In addition, the synthesis of the qualitative studies confirmed that the primary use of splints by people with RA is to decrease pain and swelling. Results also suggest that there is moderate improvement in grip, inconclusive effect on function and a negative impact on dexterity. However, there have been few rigorously conducted clinical trials, and many with methodological shortcomings, and little homogeneity between studies in relation to splints. Outcome measures and the population studied prove problematic in providing definitive answers for clinicians on which to base clinical practice.

REFERENCES

1. Furlan AD, Peenick V, Bombardier C, van Tulder M. Updated method guidelines for systematic reviews in the Cochrane back review group. *Spine* 2009; 34: 1929–1941.
2. National Institute for Health and Clinical Excellence [NICE] Rheumatoid arthritis. The management of rheumatoid arthritis in adults. London: NICE; 2009.
3. Symmons D, Turner G, Webb R, Asten P, Barrett E, Lunt M. et al. The prevalence of rheumatoid arthritis in the United Kingdom: new estimates for a new century. *Rheumatology* 2002; 41: 793–800.
4. Hammond A. What is the role of the occupational therapist? *Best Pract and Best Pract Res Clin Rheumatol* 2004; 18: 491–505.
5. Henderson SE, McMillan IR. Pain and function: occupational therapists' use of orthotics in rheumatoid arthritis. *BJOT* 2002; 65: 165–171.
6. Spoorenberg A, Boers M, van der Linden S. Wrist splints in rheumatoid arthritis: what do we know about efficacy? *Arthritis Care Res* 1994; 7: 55–57.
7. Vliet Vlieland TPM. Rehabilitation of people with rheumatoid arthritis. *Best Pract Res Clin Rheumatol* 2003; 17: 847–861.
8. Luqmani R, Hennell S, Estrach C, Birrell F, Bosworth A, Davenport G, et al. British Society for Rheumatology and British Health Professionals in rheumatology standards, guideline for the management of rheumatoid arthritis (the first 2 years). *Rheumatology*

- 2006; 45: 1167–1169.
9. British Association of Occupational Therapists. Occupational therapy clinical guidelines for rheumatology [Internet]. 2003 [cited 2012 Feb 14]. Available from: http://www.cot.co.uk/MainWebSite/Resources/Document/rheumatology_guidelines.pdf.
 10. Egan M, Brosseau L, Farmer M, Ouimet MA, Rees S, Tugwell P, et al. Splints and orthosis for treating rheumatoid arthritis. *Cochrane systematic review* 2001; 1: CD004018.
 11. Muggli EE. Splints/orthotics for upper extremities in rheumatoid arthritis [Internet]. 2002 [cited 2011 Sep 6]. Available from: <http://www.med.monash.edu.au/healthservices/ece>.
 12. Adams J, Hammond A, Burrige J, Cooper C. Static orthoses in the prevention of hand dysfunction in rheumatoid arthritis: a literature review. *Musculoskeletal care* 2005; 3: 85–101.
 13. Steultjens EMJ, Dekker J, Bouter LM, van Schaardenbur D, van Kuyk, MAH, van den Ende CHM. Occupational therapy for rheumatoid arthritis. *Cochrane database of systematic reviews* 2004 (Online); (1): CD003114.
 14. Harden A, Thomas J. Methodological issues in combining diverse study types in systematic reviews. *Int J Soc Res Meth* 2005; 8: 257–271.
 15. Liberati A, Altman D, Tetzlaff J, Mulrow C, GÅ, Tzsche P, Loannidis J, et al. The PRISMA statement for reporting systematic reviews and meta-analyses of studies that evaluate health care interventions: Explanation and elaboration. *PLoS Med* 2009; 6: e1000100.
 16. Cochrane effective practice and organisation of care review group. Data collection checklist [Internet]. 2002 [cited 2011 Nov 16]. Available from: <http://epoc.cochrane.org/sites/epoc.cochrane.org/files/uploads/datacollectionchecklist.pdf>.
 17. Centre for evidence based management. Critical appraisal of a survey tool. [Internet]. 2012 [cited 2012 Jan 27]. Available from: <http://www.cebm.org/wp-content/uploads/Critical-Appraisal-Questions-for-a-Survey.pdf>.
 18. Public Health Resources Unit. Critical Appraisal Skills Programme (CASP) [Internet]. 2004 [cited 2011 Aug 23]. Available from: http://www.phru.nhs.uk/Doc_Links/Qualitative%20Appraisal%20Tool.pdf.
 19. Dorrestijn O, Stevens M, Winter J, van der Meer K, Diercks R. Conservative or surgical management for subacromial impingement syndrome? A systematic review. *J Shoulder Elbow Surg* 2009; 18: 652–660.
 20. Centre for Reviews and Dissemination. *Systematic Reviews, Centre for Reviews and Dissemination guidance for undertaking reviews in health care*. York; University of York: 2008 p. 48.
 21. Nobit W, Hare RD. *Meta-ethnography: synthesising qualitative studies*. California: SAGE; 1988.
 22. Stern EB, Ytterberg SR, Krug HE, Mahowald ML. Finger dexterity and hand function: effect of three commercial wrist extensor orthoses on patients with rheumatoid arthritis. *Arthritis Care Res* 1996; 9: 197–205.
 23. Stern EB, Ytterberg SR, Krug HE, Mullin GT, Mahowald ML. Immediate and short-term effects of three commercial wrist extensor orthoses on grip strength and function in patients with rheumatoid arthritis. *Arthritis Care Res* 1996; 9: 42–50.
 24. Anderson K, Maas F. Immediate effect of working splints on grip strength of arthritic patients. *Aust Occup Ther J* 1987; 34: 26–31.
 25. Haskett S, Backman C, Porter B, Goyert J, Palejko G. A cross-over trial of commercial and custom-made wrist splints in managing inflammatory arthritis. *Arthritis Rheum* 2014; 46: S556–S557.
 26. Kjekken I, Moller G, Kvien TK. Use of commercially produced elastic wrist orthoses in chronic arthritis: a controlled study. *Arthritis Care Res* 1995; 8: 108–113.
 27. Pagnotta A, Korner-Bitensky N, Mazer B, Baron M, Wood-Dauphinee S. Static wrist splint use in the performance of daily activities by individuals with rheumatoid arthritis. *J Rheumatol* 2005; 32: 2136–2143.
 28. Thiele J, Nimmo R, Rowell W, Quinn S, Jones G. A randomized single blind crossover trial comparing leather and commercial wrist splints for treating chronic wrist pain in adults. *BMC Musculoskelet Disord* 2009; 10: 129.
 29. Tijhuis GJ, Vlieland T, Zwinderman AH, Hazes J. A comparison of the Futuro™ wrist orthosis with a synthetic Thermolyn® orthosis: utility and clinical effectiveness. *Arthritis Care Res* 1998; 11: 217–222.
 30. Veehof MM, Taal E, Heijnsdijk-Rouwenhorst LM, van de Laar MA. Efficacy of wrist working splints in patients with rheumatoid arthritis: a randomized controlled study. *Arthritis Rheum* 2008; 59: 1698–1704.
 31. Backman CL, Deitz JC. Static wrist splint: Its effect on hand function in three women with rheumatoid arthritis. *Arthritis Care Res* 1988; 1: 151–160.
 32. Burtner PA, Anderson JB, Marcum ML, Poole JL. A comparison of static and dynamic wrist splints using electromyography in individuals with rheumatoid arthritis. *J Hand Ther* 2003; 16: 320–325.
 33. Nordenskiöld U. Elastic wrist orthoses: Reduction of pain and increase in grip force for women with rheumatoid arthritis. *Arthritis Care Res* 1990; 3: 158–162.
 34. Pagnotta A, Baron M, Korner-Bitensky N. The effect of a static wrist orthosis on hand function in individuals with rheumatoid arthritis. *J Rheumatol* 1998; 25: 879–885.
 35. Cytowicz-Karpilowska W, Karpilowski B, Seyfried A. The influence of a joint orthosis on the grip force of the rheumatoid hand. *Clin Rheumatol* 1999; 18: 373–384.
 36. Gumpel JM, Cannon S. A cross-over comparison of ready-made fabric wrist-splints in rheumatoid arthritis. *Rheumatol Rehabil* 1981; 20: 113–115.
 37. Nicholas JJ, Gruen H, Weiner G, Crawshaw C, Taylor F. Splinting in rheumatoid arthritis: II. Evaluation of lightcast II fibreglass polymer splints. *Arch Phys Med Rehab* 1982; 63: 95–96.
 38. Nicholas JJ, Gruen H, Weiner G, Crawshaw C, Taylor F. Splinting in rheumatoid arthritis: I. Factors affecting patient compliance. *Arch Phys Med Rehab* 1982; 63: 92–94.
 39. Agnew PJ, Maas F. Compliance in wearing wrist working splints in rheumatoid-arthritis. *OTJR* 1995; 15: 165–180.
 40. De Boer IG, Peeters AJ, Ronday HK., Mertens BJA., Breedveld FC, VlietVlieland TPMV. The usage of functional wrist orthoses in patients with rheumatoid arthritis. *Disabil Rehabil* 2008; 30: 286–295.
 41. Stewart D, Maas F. Splint suitability of four wrist splints for arthritis. *Aust Occup Ther J* 1990; 37: 15–24.
 42. Spoorenberg A, Boers MS. Wrist splints in rheumatoid arthritis: what do we know about efficacy and compliance? *Arthritis Care Res* 1994; 7: 55–57.
 43. Veehof MM, Taal E, Willems MJ, van de Laar MA. Determinants of the use of wrist working splints in rheumatoid arthritis. *Arthritis Rheum* 2008; 59: 531–536.
 44. Stern EB, Ytterberg SR, Krug HE, Larson LM, Portoghese CP, Kratz WN et al. Commercial wrist extensor orthoses: a descriptive study of use and preference in patients with rheumatoid arthritis. *Arthritis Care Res* 1997; 10: 27–35.
 45. Langhorst J, Musial F, Klose P, Hauser W. Efficacy of hydrotherapy in fibromyalgia syndrome: a meta-analysis of randomized controlled clinical trials. *Rheumatology* 2009; 48: 1155–1159.
 46. Landis JR, Koch GG. The measurement of observer agreement for categorical data. *Biometrics* 1977; 33: 159–174.
 47. Hammond A. Rehabilitation in musculoskeletal diseases. *Best Pract Res Clin Rheumatol* 2008; 22: 435–449.
 48. Hammond A. Rehabilitation in rheumatoid arthritis: a critical review. *Musculoskeletal Care* 2004; 2: 135–151.
 49. Vliet Vlieland T. Rehabilitation of people with rheumatoid arthritis. *Best Pract Res Clin Rheumatol* 2003; 17: 847–861.
 50. Pope C, Mays N, Popay J. *Synthesizing qualitative and quantitative health evidence. A guide to methods*. New York: Open University Press; 2007.