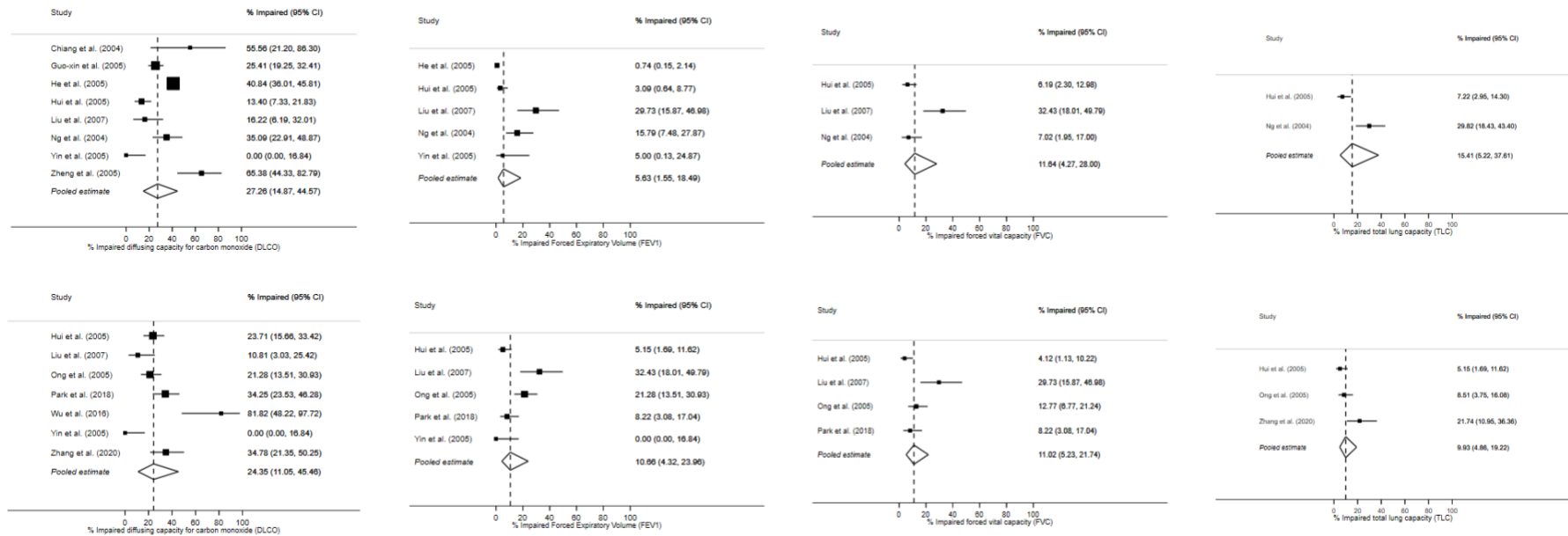


# Long-term clinical outcomes in SARS and MERS survivors

## Supplementary Materials

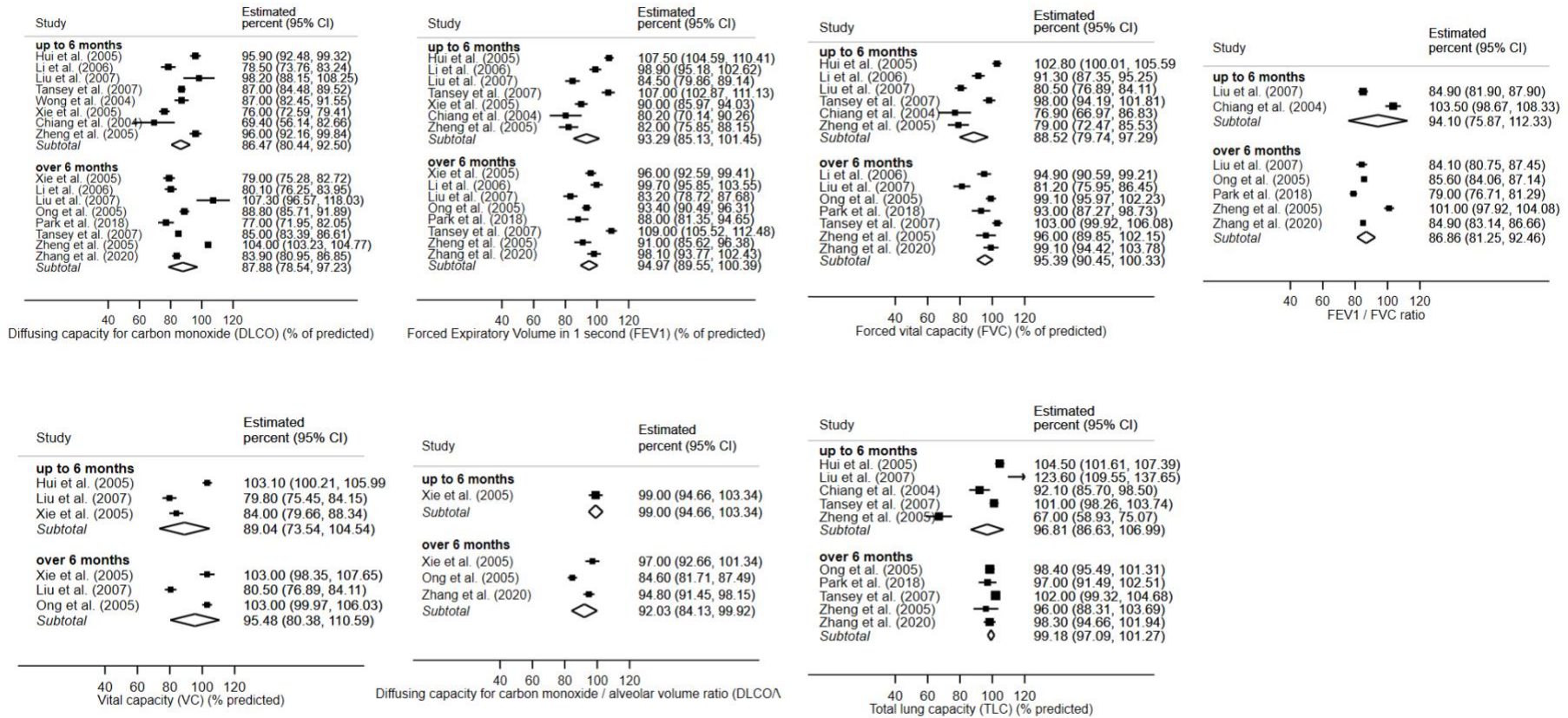
Since this is a very extensive supplemental material, the format and content have not been edited by JRM

**Fig. S1.** Forest plot showing pooled estimate of prevalence of different lung function abnormalities in coronavirus survivors up to 6 months (top) and over 6 months (bottom)

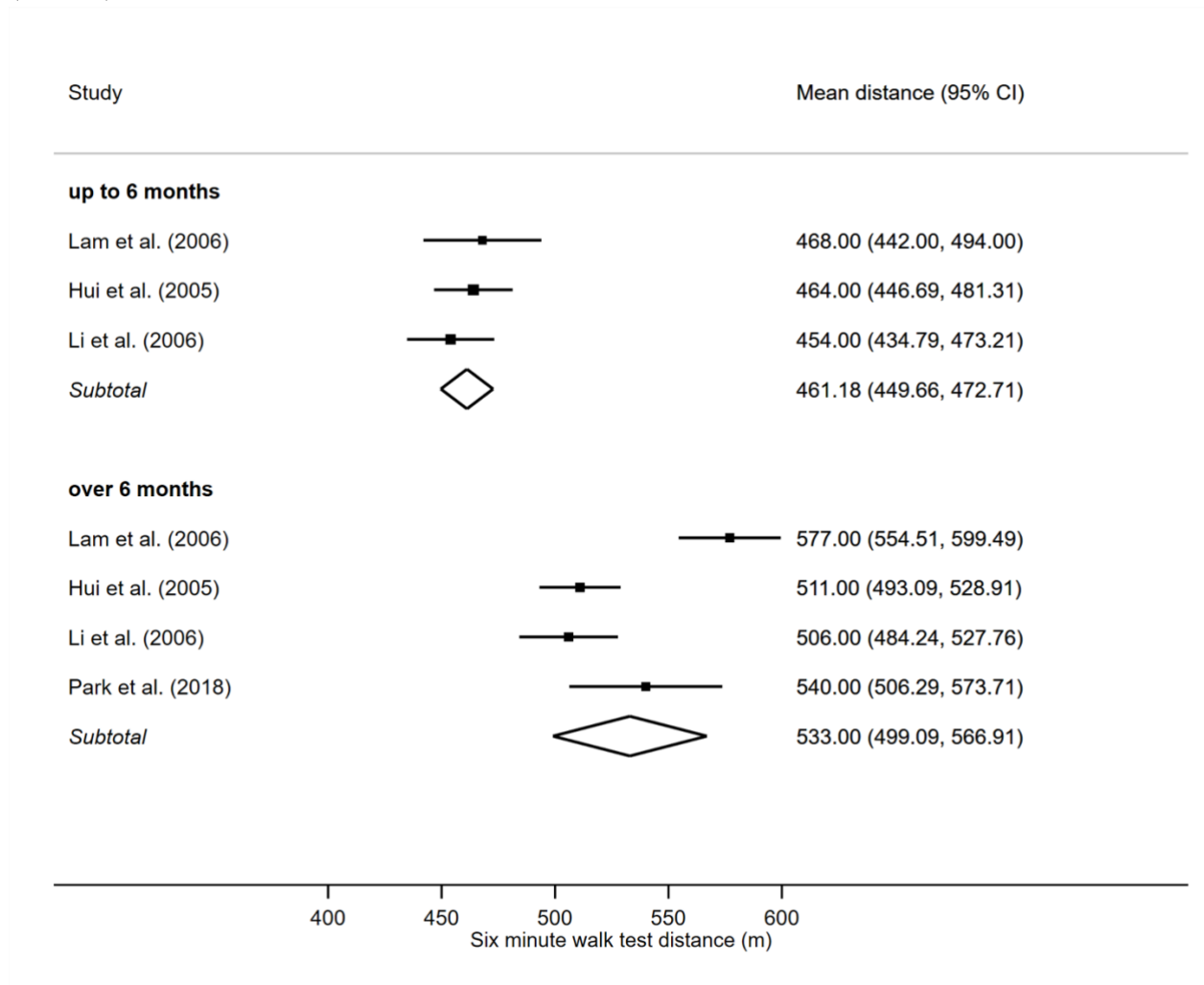


Long-term clinical outcomes in SARS and MERS survivors

**Fig. S2.** Forest plot showing pooled estimate of mean values of different lung function abnormalities in CoV survivors up to 6 months (top) and over 6 months (bottom).

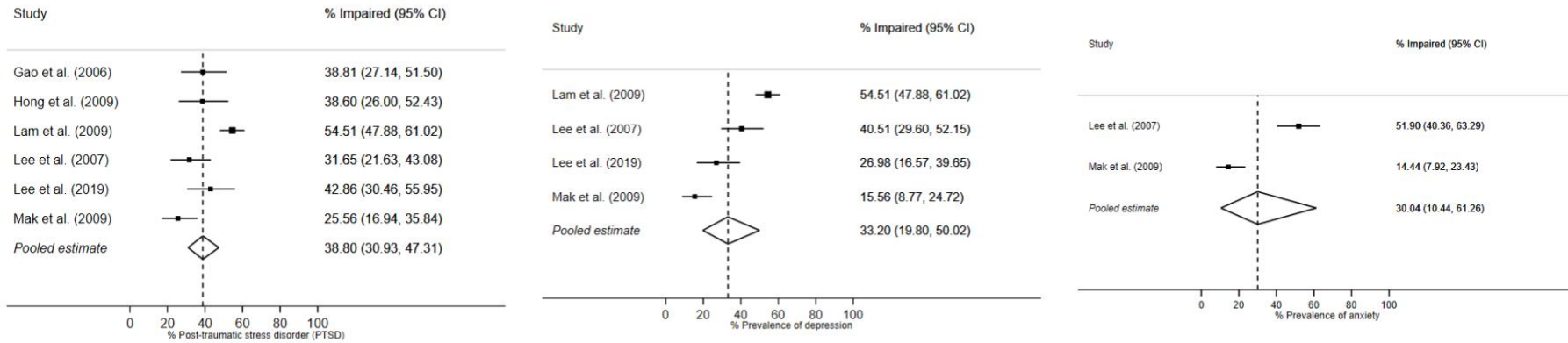


**Fig. S3.** Summary plot showing pooled estimate of 6-minute walking distance in CoV survivors up to 6 months (top) and over 6 months (bottom)



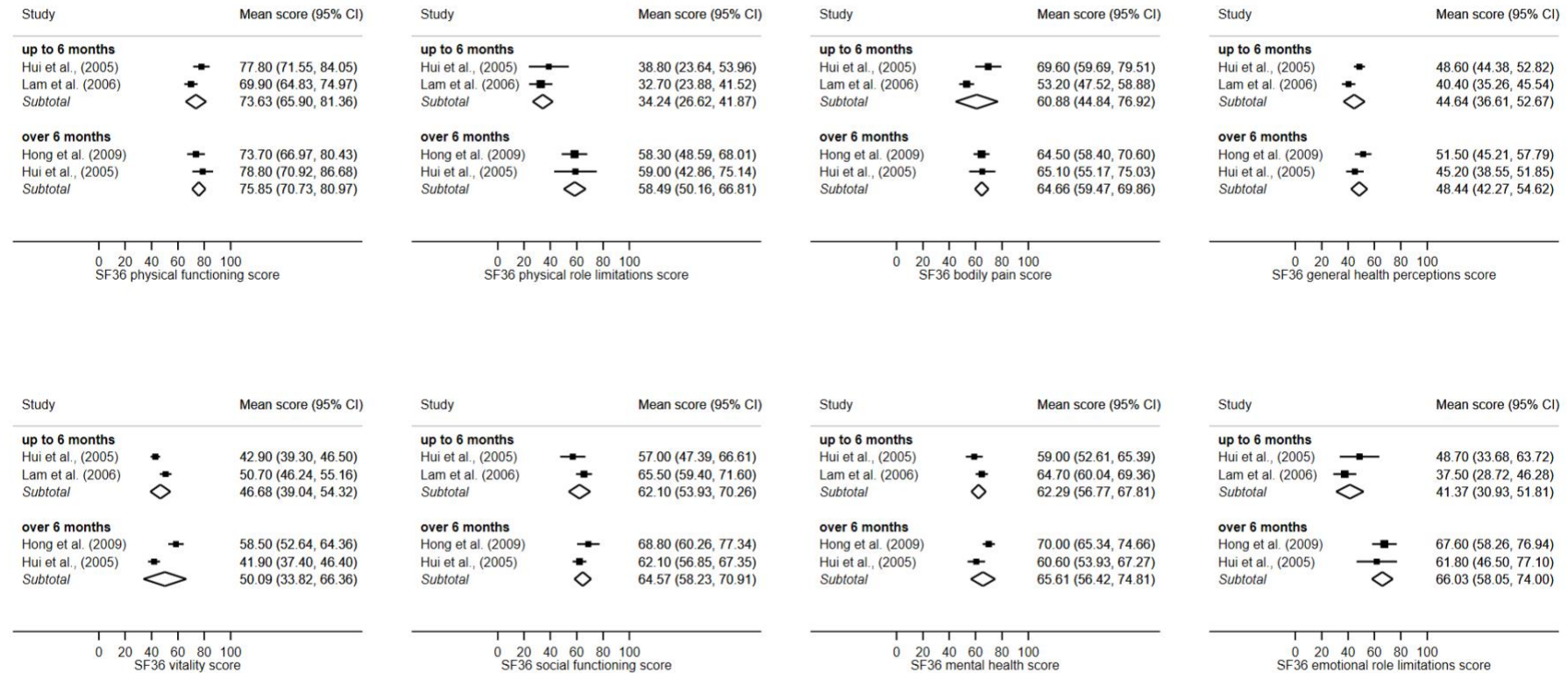
Long-term clinical outcomes in SARS and MERS survivors

**Fig. S4.** Forest plot showing pooled estimate of prevalence of different psychological conditions in coronavirus survivors over 6 months

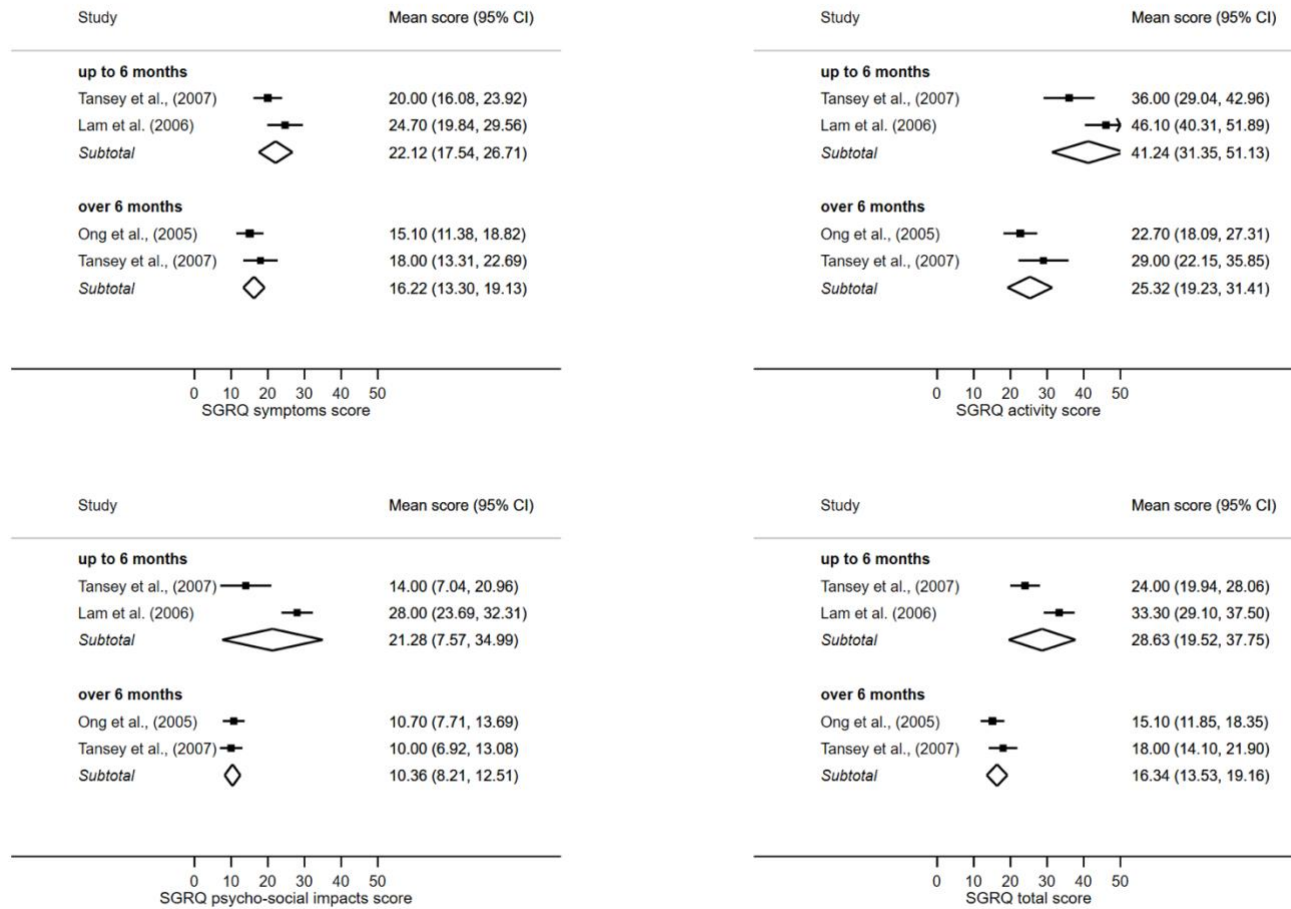


Long-term clinical outcomes in SARS and MERS survivors

**Fig. S5.** Forest plot showing pooled estimate of mean score for different domains of SF-36 in CoV survivors up to 6 months (top) and over 6 months (bottom)



**Fig. S6.** Forest plot showing pooled estimate of mean score for different domains of SGRQ in CoV survivors up to 6 months (top) and over 6 months (bottom)



**Table SI.** OCEBM Levels of Evidence

<b>Level of Evidence</b>	<b>Type of Study</b>
Level 1a	Systematic review of prospective cohort studies
Level 1b	Prospective cohort study with good follow-up (>80%)
Level 1c	All or none case-series
Level 2a	Systematic review of retrospective cohort study
Level 2b	Prospective cohort study with follow-up (<80%) or Retrospective cohort study
Level 2c	Ecological studies
Level 3a	Systematic Review of Non-consecutive cohort study or very limited population
Level 3b	Non-consecutive cohort study
Level 4	Case-series
Level 5	Expert opinion without explicit critical appraisal, or based on physiology, bench research or “first principles”

**Table SII: Lung function outcomes in coronavirus survivors.**

**SUPPLEMENTARY TABLE 2 - LUNG FUNCTION OUTCOMES**

Study (Year)	Coronavirus outbreak	Country	PATIENT DEMOGRAPHICS			Follow-up Period	PA or PD	Patients followed-up % (n/total)	PREVALENCE OF LUNG FUNCTION ABNORMALITIES										MEAN MEASUREMENTS OF LUNG FUNCTION PARAMETERS						Symptoms [n(%)]							
			Level of Evidence	Sample Size [n]	Setting				Prevalence of <math>\leq</math>DLCO [% (n/total)]	Prevalence of <math>\leq</math>FEV<sub>1</sub> [% (n/total)]	Prevalence of <math>\leq</math>FVC [% (n/total)]	Prevalence of Abnormal TLC [% (n/total)]	Prevalence of Abnormal FEV<sub>1</sub>/FVC [% (n/total)]	Prevalence of Abnormal VC [% (n/total)]	Prevalence of Obstructive [% (n/total)]	Prevalence of Restrictive [% (n/total)]	Air lung abnormality [% (n/total)]	DLCO [Mean % predicted (SD)]	FEV<sub>1</sub> [Mean % predicted (SD)]	FVC [Mean % predicted (SD)]	FEV<sub>1</sub>/FVC [Mean % predicted (SD)]	VC [Mean % predicted (SD)]	DLCOVA [Mean % predicted (SD)]	TLC [Mean % predicted (SD)]		FEF<sub>25-75</sub> [Mean % predicted (SD)]						
He et al. (2005) <sup>1</sup>	SARS	Beijing	1b	406	Hospital	6 mon	PD	99 (494/406)	41 (165 / 404)	1 (3 / 406)	--	--	7 (28 / 406)	(1 / 406)	(28 / 406)	--	--	--	--	--	--	--	--	--	--	--	--	--	Chest Rightness & Dyspnoea - 28, palpitations - 12, fatigue - 19, arthralgia - 35			
Dong et al. (2006) <sup>2</sup>	SARS	Beijing	1b	124	Hospital	3 mon	PD	89 (111/124)	--	--	--	--	--	--	--	--	--	--	--	--	--	--	--	--	--	--	--	--	Chest Rightness & Dyspnoea - 13, palpitations - 8, fatigue - 10, arthralgia - 25			
						18 mon	PD	89 (111/124)	--	--	--	--	--	--	--	--	--	--	--	--	--	--	--	--	--	--	--	--	--	--	--	--
Tansley et al. (2007) <sup>3</sup>	SARS	Toronto	1b	117	Hospital	3 mon	PD	100 (84/84)	--	--	--	--	--	--	--	--	--	87 (11-8)	107 (19-3)	98 (17-8)	--	--	--	--	98 (25)	--	--	--	--	--		
						6 mon	PD	100 (100/100)	--	--	--	--	--	--	--	--	--	--	--	--	86 (9-6)	110 (16-3)	103 (17-8)	--	--	--	--	101 (14-0)	--	--	--	--
						12 mon	PD	100 (117/117)	--	--	--	--	--	--	--	--	--	--	--	--	85 (8-9)	109 (19-2)	103 (17-6)	--	--	--	--	102 (14-8)	--	--	--	--
Hui et al. (2005) <sup>4</sup>	SARS	Hong Kong	1b	110	Hospital and ICU	3 mon	PA	88 (97/110)	13.5 (13 / 97)	3 (3 / 97)	6 (6 / 97)	7 (7 / 97)	--	6 (6 / 97)	--	--	95.9 (17.2)	107.5 (14.6)	102.8 (14.0)	--	103.1 (14.5)	--	--	104.5 (18.0)	96.0 (25.6)	--	--	--	--			
						6 mon	PA	88 (97/110)	16 (15 / 97)	4 (4 / 97)	4 (4 / 97)	8 (8 / 97)	--	5 (5 / 97)	--	--	95.5 (19.4)	106.8 (14.9)	103.6 (14.5)	--	103.5 (14.9)	--	--	106.0 (16.7)	90.0 (27.7)	--	--	--	--			
						12 mon	PA	88 (97/110)	24 (23 / 97)	5 (5 / 97)	4 (4 / 97)	5 (5 / 97)	--	5 (5 / 97)	--	--	91.8 (17.7)	106.5 (14.7)	104.1 (14.7)	--	103.7 (15.3)	--	--	108.8 (16.1)	87.5 (26.4)	--	--	--	--			
Zheng-Yu et al. (2005) <sup>5</sup>	SARS	Beijing	1b	100	Hospital	2 mon	PD	91 (91 / 100)	--	--	--	--	--	--	--	80	93	96	83	--	--	--	--	--	--	--	--	--				
Ong et al. (2005) <sup>6</sup>	SARS	Singapore	1b	94	Hospital and ICU	12 mon	PD	100 (94/94)	21.3 (20 / 94)	21.3 (20 / 94)	12.8 (12 / 94)	8.5 (8 / 94)	6.4 (6.4 / 94)	--	--	37.2 (15 / 94)	88.8 (15.3)	93.4 (14.4)	99.1 (15.5)	85.6 (7.6)	103.0 (15.0)	84.6 (14.3)	98.4 (14.4)	--	--	--	--	Cough - 28 (30), increased sputum - 15(20), dyspnoea - 28 (30), wheeze - 7 (7)				
Park et al. (2018) <sup>7</sup>	MERS	Korea	1b	73	Nation-wide	12 mon	PD	100 (73/73)	34 (25 / 73)	8 (6 / 73)	8 (6 / 73)	--	--	--	--	--	77 (22)	88 (29)	93 (25)	79 (10)	--	--	--	97 (24)	--	--	--	--				
Li et al. (2006) <sup>8</sup>	SARS	Hong Kong	1b	45	ICU	3 mon	PA	80 (36/45)	--	--	--	--	--	--	--	--	--	78.5 (14.5)	98.9 (11.4)	91.3 (12.1)	--	--	--	--	92.6 (13.8)	--	--	--	--			
						6 mon	PA	80 (36/45)	--	--	--	--	--	--	--	--	--	--	--	84.3 (18.3)	100.2 (14.8)	95.8 (14.0)	--	--	--	--	108.1 (17.3)	--	--	--		
						12 mon	PA	80 (36/45)	--	--	--	--	--	--	--	--	--	--	--	80.1 (17.5)	99.7 (11.8)	94.9 (13.2)	--	--	--	--	87.8 (13.9)	--	--	--		
Liu et al. (2007) <sup>9</sup>	SARS	Beijing	1b	37	Hospital	1 mon	PD	100 (37/37)	32.4 (12 / 37)	24.3 (9 / 37)	27 (12 / 37)	--	8.1 (3 / 37)	--	--	80.9 (37.5)	81.5 (15.7)	78.2 (13.7)	84.7 (11.5)	78.4 (6.1)	--	120.1 (51.4)	60.7 (25.3)	--	--	--	--					
						3 mon	PD	100 (37/37)	16.2 (6 / 37)	29.7 (11 / 37)	32.4 (12 / 37)	5.4 (2 / 37)	--	--	98.2 (31.2)	84.5 (14.4)	90.5 (11.2)	84.9 (9.3)	79.8 (13.5)	--	126.4 (43.6)	64.5 (21.4)	--	--	--	--						
						12 mon	PD	100 (37/37)	10.8 (4 / 37)	32.4 (12 / 37)	29.7 (11 / 37)	5.4 (2 / 37)	--	--	107.3 (33.3)	83.2 (13.9)	81.2 (16.3)	84.1 (10.4)	80.5 (11.2)	--	120.8 (40.3)	63.8 (24.9)	--	--	--	--						
						3 yrs	PD	100 (37/37)	5.4 (2 / 37)	32.4 (12 / 37)	32.4 (12 / 37)	5.4 (2 / 37)	--	--	122.4 (32.9)	85.1 (15.8)	83.1 (15.4)	86.0 (6.8)	81.1 (15.6)	--	130.5 (38.8)	65.6 (25.9)	--	--	--	--						
Ng et al. (2006) <sup>10</sup> Zheng et al. (2005) <sup>11</sup>	SARS	Guangzhou (China)	2b	80	Hospital	6 mon	PD	33 (26 / 80)	65 (17 / 26)	--	--	--	--	--	--	--	96 (10)	82 (16)	79 (17)	103 (10)	--	69 (15)	67 (21)	93 (27)	--	--	--	--				
						9 mon	PD	33 (26 / 80)	--	--	--	--	--	--	--	--	--	--	--	96 (16)	91 (12)	92 (13)	105 (6)	--	85 (9)	86 (15)	83 (17)	--	--	--		
						9-12 mon	PD	33 (26 / 80)	--	--	--	--	--	--	--	--	--	--	--	104 (2)	91 (14)	96 (16)	101 (8)	--	102 (18)	96 (20)	76 (23)	--	--	--		
						12-15 mon	PD	33 (26 / 80)	--	--	--	--	--	--	--	--	--	--	--	93 (21)	94 (18)	93 (17)	106 (4)	--	81 (20)	97 (20)	86 (22)	--	--	--		
						15-18 mon	PD	33 (26 / 80)	--	--	--	--	--	--	--	--	--	--	--	111 (7)	104 (1)	106 (10)	103 (9)	--	118 (21)	114 (33)	83 (33)	--	--	--		
Zhang et al. (2020) <sup>12</sup>	SARS	Beijing	2b	71	Hospital	2 yrs	PD	65 (46/71)	35 (16 / 46)	--	--	22 (10 / 46)	2 (1 / 52)	--	22 (10 / 46)	83.9 (10.2)	98.1 (15)	99.1 (16.2)	84.9 (6.1)	--	94.8 (11.6)	98.3 (12.6)	85.3 (21.5)	--	--	--	--					
						15 yrs	PD	73 (52/71)	38 (18 / 52)	--	--	0 (0 / 52)	--	2 (1 / 52)	0 (0 / 52)	88.4 (14.9)	100.2 (13.4)	103.3 (14.8)	81.8 (5.0)	--	92.4 (16.6)	102.6 (12.6)	79.2 (22.8)	--	--	--	--					
Chiang et al. (2004) <sup>13</sup>	SARS	Taiwan	2b	14	Hospital	6 mon	PA	64 (9/14)	50 (5 / 9)	--	--	--	--	--	69.4 (20.3)	80.2 (15.6)	76.9 (15.2)	103.5 (7.4)	--	--	--	92.1 (9.8)	--	--	--	--						
Xie et al. (2005) <sup>14</sup>	SARS	Beijing	3b	311	Hospital	2 mon	PD	13 (40/311)	--	--	--	--	--	--	--	--	69 (9)	83 (13)	--	--	87 (15)	95 (14)	--	--	--	--						
						4 mon	PD	13 (40/311)	--	--	--	--	--	--	--	--	--	--	76 (11)	90 (13)	--	--	94 (14)	99 (14)	--	--	--					
						6 mon	PD	13 (40/311)	--	--	--	--	--	--	--	--	--	--	76 (11)	93 (12)	--	--	100 (15)	97 (14)	--	--	--					
						11 mon	PD	13 (40/311)	--	--	--	--	--	--	--	23.7 (85 / 311)	79 (12)	96 (11)	--	--	103 (15)	97 (14)	--	--	--							
Guo-xin et al. (2005) <sup>15</sup>	SARS	Beijing	3b	181	Hospital	6 mon	PD	100 (181/181)	25 (46 / 181)	--	--	--	--	--	--	--	--	--	--	--	--	--	--	--	--	--						
						3 mon	PA	54 (53/99)	--	--	--	--	--	--	--	--	--	--	87.0 (16.9)	--	--	--	--	--	--	--	--					
Wong et al. (2004) <sup>16</sup>	SARS	Hong Kong	3b	99	Hospital	3 mon	PA	37 (37/99)	--	--	--	--	--	--	--	--	--	--	--	--	--	--	--	--	--	--	--					
						6 mon	PA	37 (37/99)	--	--	--	--	--	--	--	--	--	--	88.0 (20.9)	--	--	--	--	--	--	--	--	--				
						1 mon	PD	20	5 (1 / 20)	15 (3 / 20)	--	--	--	--	--	--	--	--	83.9 (0.0)	61.3 (4.1)	--	--	--	--	--	--	--					
						3 mon	PD	21	0 (0 / 20)	5 (1 / 20)	--	--	--	--	--	--	--	--	0.0 (0.0)	67.0 (0.0)	--	--	--	--	--	--						
Yin et al. (2005) <sup>17</sup>	SARS	Beijing	4	--	Hospital	6 mon	PD	22	0 (0 / 20)	5 (1 / 20)	--	--	--	--	--	--	0.0 (0.0)	72 (0.0)	--	--	--	--	--	--	--							
						12 mon	PD	23	0 (0 / 20)	0 (0 / 20)	--	--	--	--	--	--	--	0.0 (0.0)	0.0 (0.0)	--	--	--	--	--	--							
						7 years	PD	11	82 (9 / 11)	--	--	--	--	--	--	--	--	82 (9 / 11)	--	--	--	--	--	--	--							

DLCO = Diffusing capacity for carbon monoxide; FEV1 = Forced Expiratory Volume in 1 second; FVC = Forced Vital Capacity; TLC = Total Lung Capacity; SARS = Severe acute respiratory syndrome; MERS = Middle east respiratory syndrome; PA/D = post-admission/discharge;



**Table SIII. Mental health outcomes in coronavirus survivors.****SUPPLEMENTARY TABLE 3- MENTAL HEALTH OUTCOMES**

PATIENT DEMOGRAPHICS										PREVALENCE OF MENTAL HEALTH OUTCOMES					MEAN SCORES FOR MENTAL HEALTH OUTCOMES				
Study (Year)	Coronavirus outbreak	Country	Level of Evidence	Sample Size [n]	Age [Mean(SD)]	Sex [% male (n/total)]	Setting	Follow-up Period	PA or PD	Patients followed-up [% (n/total)]	Prevalence of PTSD [%(n/total)]	Prevalence of Depression [%(n/total)]	Prevalence of Anxiety [%(n/total)]	Prevalence of Chronic Fatigue [%(n/total)]	Prevalence of Pain Disorder [%(n)]	Mean PTSD score [Mean (SD)]	Mean Depression Score [mean (SD)]	Mean Anxiety Score [mean (SD)]	Mean Fatigue Score [mean (SD)]
Lee et al. (2007) <sup>20</sup>	SARS	Hong Kong	1b	120	..	36 (35/96)	Hospital	12 mon	PD	80% (96/120)	32-2 (25 / 79) (IES-R)	40-7 (32 / 79) (DASS)	51-5 (41 / 79) (DASS)	..	..	1-4 (0-9) IES-R	11-1 (9-1) DASS	10-4 (8-0) DASS	..
Mak et al. (2009) <sup>21</sup>	SARS	Hong Kong	1b	93	41 (12)	38 (34/90)	Hospital	2-5 yrs	PA	96-8(90 / 93)	25-6 (23 / 90) (IES-R)	15-6 (14 / 90) (HADS)	15-2 (13 / 90) (HADS)	..	..	..	..	..	..
Gao et al. (2006) <sup>22</sup>	SARS	Beijing	1b	76	25 (9)	31 (21/67)	Hospital	3 mon 12 mon	PD PD	88 (67 / 76) 88 (67 / 76)	46-2 (31 / 67) 38-8 (26 / 67) (PTSD-SS)	.. ..	.. ..	.. ..	.. ..	.. ..	.. ..	.. ..	.. ..
Hong et al. (2009) <sup>23</sup>	SARS	Beijing	1b	70	39 (12)	33 (23/70)	Hospital	2 mon 7 mon 10 mon 20 mon 4 yrs	PD PD PD PD PD	100 (70 / 70) 86 (60 / 70) 81 (57 / 70) 83 (58 / 70) 83 (57 / 70)	40-0 (28 / 70) 41-0 (25 / 60) 38-6 (22 / 57) 39-7 (23 / 58) 42-1 (24 / 58) (CCMD-III)	.. .. .. .. ..	.. .. .. .. ..	.. .. .. .. ..	.. 25-5 (16-5) 27-9 (19-9) 22-3 (20-1) 22-1 (21-2) IES-R	32-0 (18-3) 38-9 (13-0) 37-5 (13-1) 33-1 (12-8) 32-4 (15-0) SDS	33-3(15-9) 30-5 (12-9) 30-1 (12-6) 29-0 (13-4) 28-8 (16-3) SAS	.. .. .. .. ..	
Lee et al. (2019) <sup>24</sup>	MERS	Korea	1b	72	50 (12)	62 (32/52)	Hospital	12 mon 18 mon	PD PD	88 (63 / 72) 75 (54 / 72)	42-3 (27 / 63) 26-9 (15 / 54) (IES-R)	26-9 (17 / 63) 17-3 (9 / 54) (PHQ-9)	.. .. ..	48-1 (30 / 63) 32-7 (18 / 54) (FSS)	.. .. ..	25-8 (20-0) 19-3 (21-0) IES-R	6-5 (5-7) 5-4 (5-7) PHQ-9	.. .. ..	3-5 (1-9) 2-8 (1-9) FSS
Lam et al. (2009) <sup>25</sup>	SARS	Hong Kong	2b	233	43 (14)	30 (69/233)	Hospital	3-5 yrs	PD	78 (181 / 233)	54-5 (127/233) (IES-R)	39 (91/233) (HADS)	.. ..	40-3 (94 / 233) (CFQ)	36-4 (85 / 233)	1-6 (1-0) IES-R	7-4 (4-5) HADS	7-6 (4-4) HADS	..

PTSD = Post-traumatic stress disorder; DASS = Depression and Anxiety Stress Scale; IES-R = Impact of Events- Revised; HADS = Hospital Anxiety and Depression Scale; PTSD-SS = PTSD self-rating scale; CCMD-III = Chinese classification of mental disorders; CFQ = Chalder Fatigue Questionnaire; PHQ = Patient Health Questionnaire; FSS = Fatigue Severity Scale; CDC = Centres for Disease Control; SARS = Severe acute respiratory syndrome; MERS = Middle east respiratory syndrome; PA/D = post-admission/discharge;

**Table SIV.** Quality of life outcomes in coronavirus survivors.

**SUPPLEMENTARY TABLE 4: QUALITY OF LIFE OUTCOMES**

Study (Year)	Coronavirus outbreak	Country	Level	PATIENT DEMOGRAPHICS					SF-36 DOMAIN SCORES										SGRQ DOMAINS			
				Sample Size [n]	Age [Mean (SD)]	Sex [% male (n/total)]	Setting	Follow-up Period	PA or PD	Patients followed-up [% (n/total)]	Physical Functioning [Mean (SD)]	Role limitations (Physical) [Mean (SD)]	Body Pain [Mean (SD)]	General Health [Mean (SD)]	Vitality [Mean (SD)]	Social Functioning [Mean (SD)]	Mental Health [Mean (SD)]	Role limitation (Emotional) [Mean (SD)]	Symptoms [Mean (SD)]	Activity [Mean (SD)]	Impacts [Mean (SD)]	Total [Mean (SD)]
Tansey et al. (2007) <sup>a</sup>	SARS	Toronto	1b	117	42 (13)	33 (39/117)	Hospital	3 mon	PD	72 (84/117)	35.8	42	45.2	42.2	38.8	35.4	43.2	40.2	20 (20)	36 (35.5)	14 (35.5)	24 (20.7)
								6 mon	PD	85 (100/117)	42	45.6	46.6	42.2	41.6	46	43.2	15 (23.7)	31 (40)	9 (17)	17 (20.7)	
								12 mon	PD	100 (117/117)	41	45.4	47	42.8	42.8	42	47.8	43.2	18 (25.9)	29 (37.8)	10 (17.0)	18 (21.5)
Hui et al. (2005) <sup>b</sup>	SARS	Hong Kong	1b	110	37 (10)	40 (39 / 97)	Hospital	3 mon	PA	88 (97/110)	77.8 (31.4)	38.8 (76.2)	69.6 (49.8)	48.6 (21.2)	42.9 (18.1)	57.0 (48.3)	59.0 (32.1)	48.7 (75.5)	..	..	..	..
								6 mon	PA	88 (97/110)	79.6 (36.1)	61.7 (80.7)	68.0 (50.3)	47.5 (32.4)	43.9 (19.8)	65.0 (39.3)	60.1 (29.7)	64.1 (67.4)	..	..	..	..
								12 mon	PA	88 (97/110)	78.8 (39.6)	59.0 (81.1)	65.1 (49.9)	45.2 (33.4)	41.9 (22.6)	62.1 (26.4)	60.6 (33.5)	61.8 (76.9)	..	..	..	..
Ong et al. (2005) <sup>c</sup>	SARS	Singapore	1b	94	37 (12)	26 (24/94)	Hospital	12 mon	PD	100 (94/94)	..	..	..	..	..	..	..	15.1 (18.4)	22.7 (22.8)	10.7 (14.8)	15.1 (16.1)	
Hong et al. (2009) <sup>d</sup>	SARS	Beijing	1b	70	39 (12)	33 (23/70)	Hospital	10 mon	PD	81 (57/70)	73.7 (30.9)	58.3 (44.6)	64.5 (28.0)	51.5 (28.9)	58.5 (26.9)	68.8 (31.2)	70.0 (21.4)	67.6 (42.9)	..	..	..	..
Lam et al. (2006) <sup>d</sup>	SARS	Hong Kong	2b	116	46 (15)	44 (51 / 81)	Hospital	6 mon	PA	70 (81 / 116)	69.9 (23.3)	32.7 (40.5)	53.2 (26.1)	40.4 (23.6)	50.7 (20.5)	65.5 (28.0)	64.7 (21.4)	37.5 (40.3)	24.7 (22.3)	46.1 (26.6)	28.0 (19.8)	33.3 (19.3)

SF-36 = Short form 36 health survey; SGRQ = St George’s Respiratory Questionnaire; SARS = Severe acute respiratory syndrome; MERS = Middle east respiratory syndrome;

PA/D = post-admission/discharge