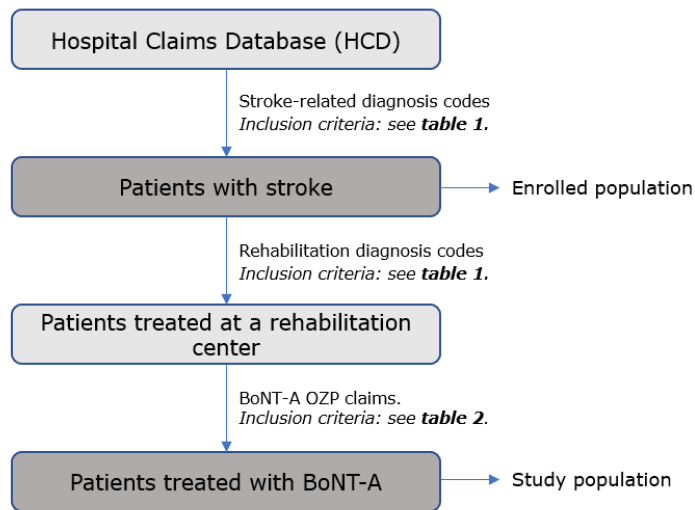
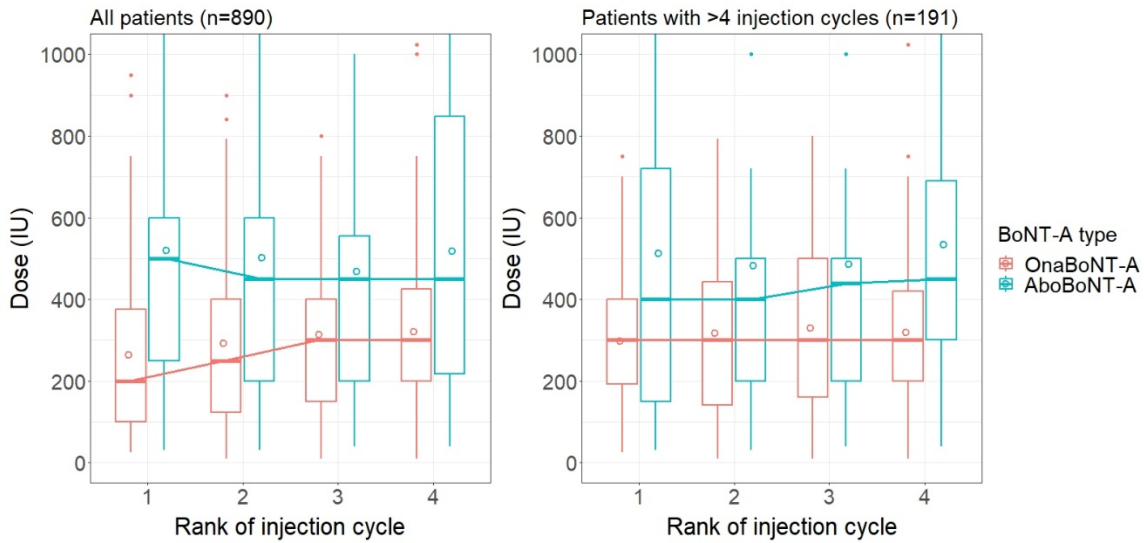


Supplementary material has been published as submitted. It has not been copyedited, or typeset by Journal of Rehabilitation Medicine



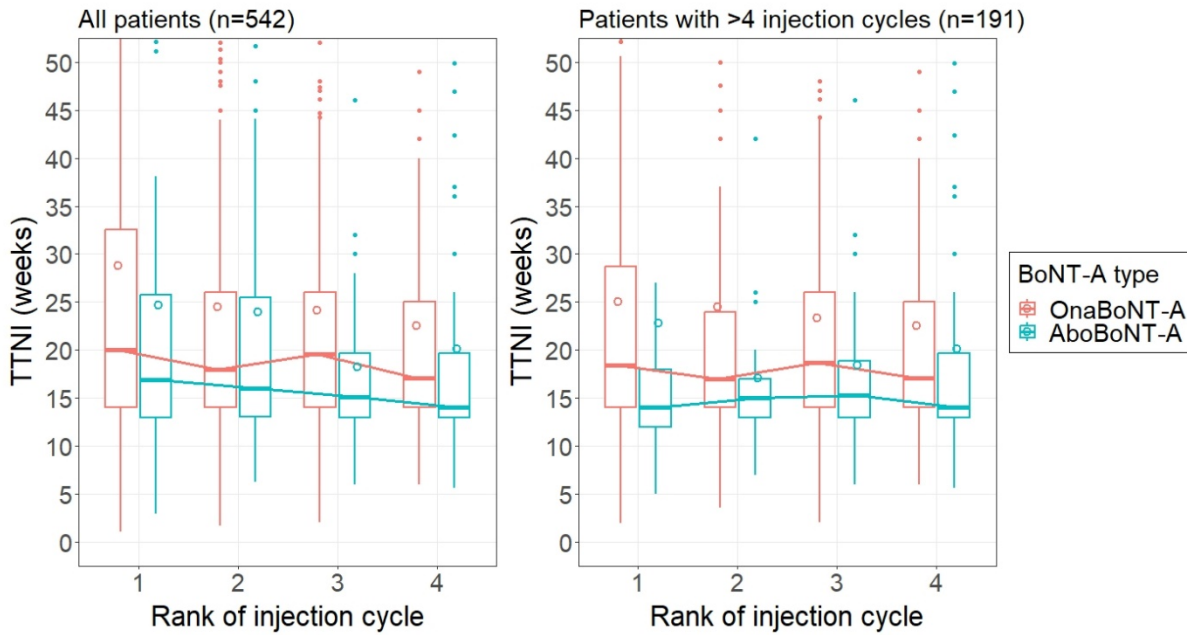
**Fig. S1. Flowchart of planned selection of claims, and study population, from the Hospital Claims Database**  
*Planned selection of the relevant claims and corresponding study population from the HCD. After selecting on stroke-related healthcare claims, claims indicative of stroke treatment in the rehabilitation setting, and BoNT-A, claims and corresponding patients were eligible for selection into the study population (further data selection and cleaning steps to be taken).*



**Fig. S2: Boxplots of dose across ranked injection cycles, per brand of BoNT-A, limited to first 4 injection cycles for all patients and patients with >4 cycles**

*Doses per brand of BoNT-A are shown for the first 4 injection cycles, for all patients (left panel) and for the subgroup selected on having more than 4 injection cycles throughout follow-up (right panel). Differences per brand between the 2 panels show to what extent time to next injection cycle was driven by patients who received only a few injection cycles. The split at  $\leq 4$  versus  $>4$  injection cycles was chosen arbitrarily. Numbers of observations for the right panel across ranked injection cycles 1 through 4 are all the same per rank, per brand:  $n=154$  for onaBoNT-A, and  $n=37$  for aboBoNT-A. Note, the Y-axis is limited to 1050 U.*

*Abbreviations: BoNT-A=botulinum toxin-A; U=International Units.*



**Fig. S3: Boxplots of TTNiC across ranked injection cycles, per brand of BoNT-A, limited to first 4 injection cycles for all patients and patients with >4 cycles**

*The time to next injection cycle is shown for the first 4 injection cycles, for all patients (left panel) and for the subgroup selected on having more than 4 injection cycles throughout follow-up (right panel). Differences per brand between the 2 panels show to what extent time to next injection cycle was driven by patients who received only a few injection cycles. The split at  $\leq 4$  versus  $>4$  injection cycles was chosen arbitrarily. Numbers of observations for the right panel across ranked injection cycles 1 through 4 are all the same per rank, per brand:  $n=154$  for anaBoNT-A, and  $n=37$  for aboBoNT-A. Note, the Y-axis is limited to 55 weeks*