

Supplemental figures. Forrest plots of effectiveness. Summary effect sizes (SES) are calculated and illustrated based on immediate post-intervention and follow-up data on gait functions after (comparison 1) repetitive gait training compared with conventional physiotherapy (PT), (comparison 2) RAGT compared with conventional PT, including a sub-analysis between different devices (end-effector vs exoskeleton) and (comparison 3) BWSTT compared with conventional PT. RAGT: robot-assisted gait training; BWSTT: body weight supported treadmill training; FAC: Functional Ambulation Categories; IV: inverse variance; CI: confidence interval; df: degrees of freedom; HM: high motricity group; LM: low motricity group).

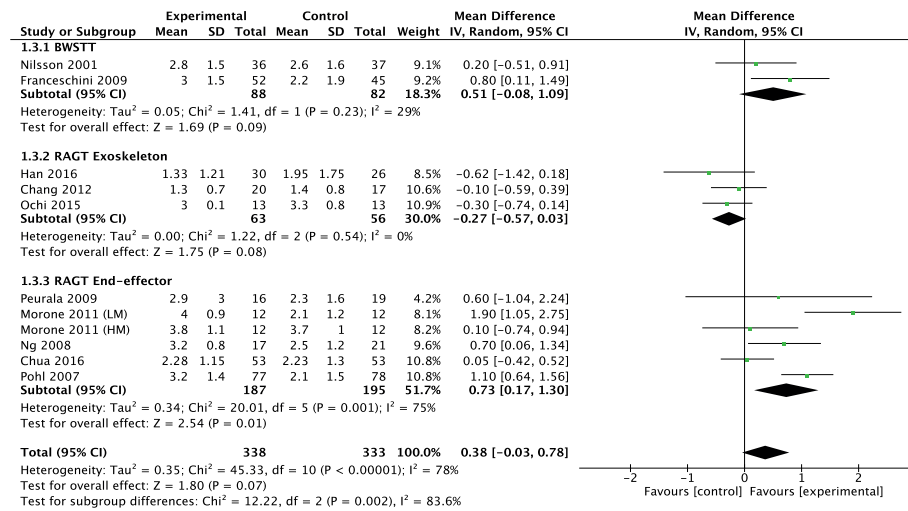


Fig. S1. Walking independence (raw Functional Ambulation Categories (FAC) scores) post-intervention.

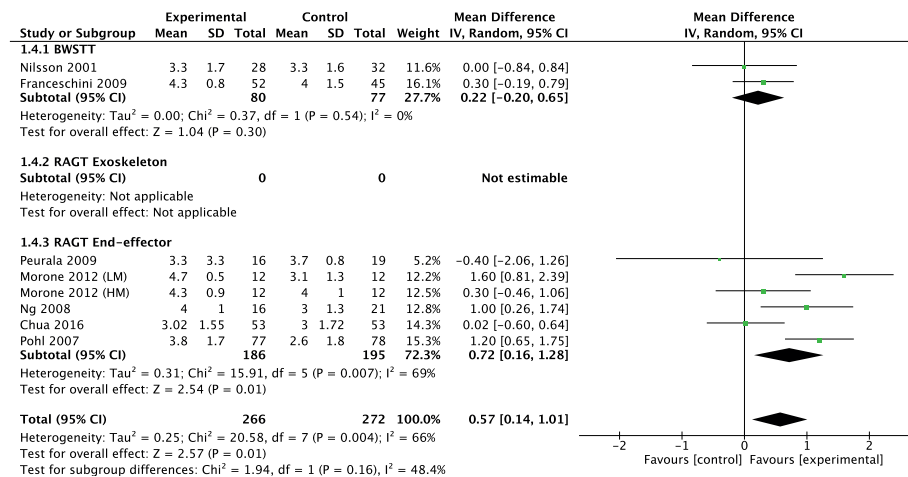


Fig. S2. Walking independence (raw Functional Ambulation Categories (FAC) scores) follow-up.

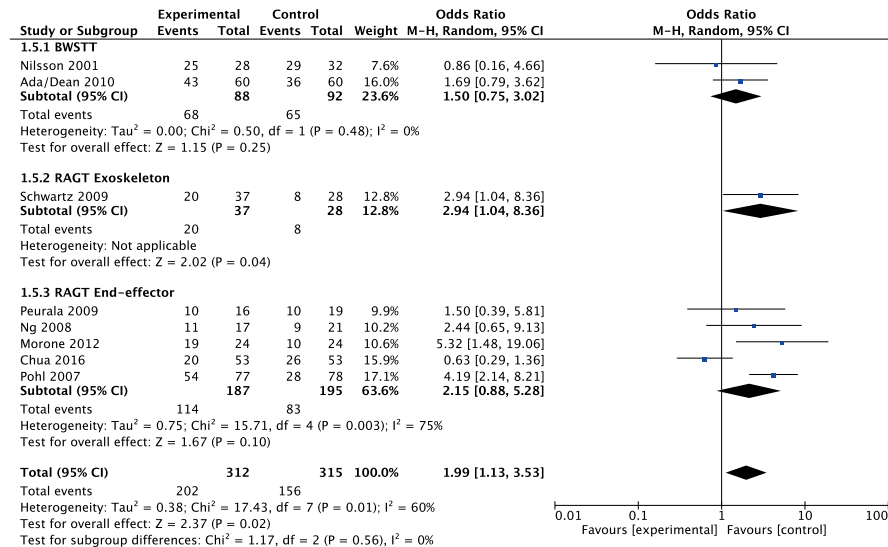


Fig. S3. Walking independence (dichotomized scores) post-intervention/follow-up.

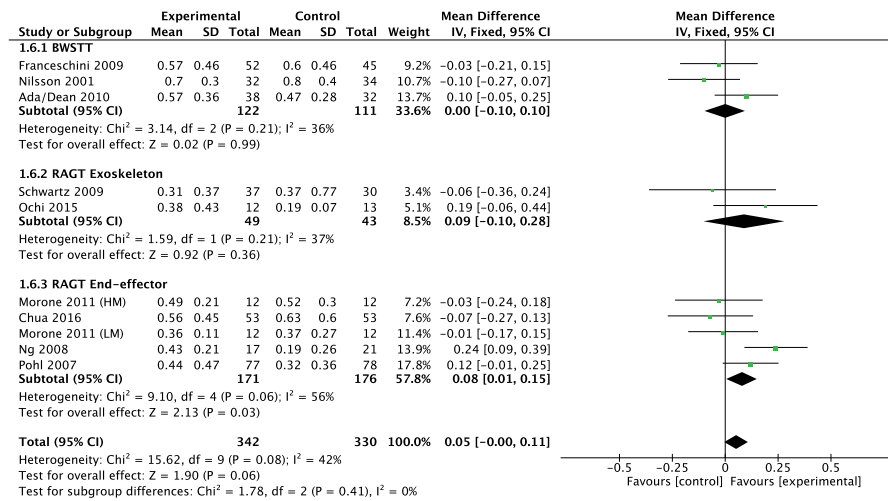


Fig. S4. Walking speed (5/10-m walk test, m/s) post-intervention.

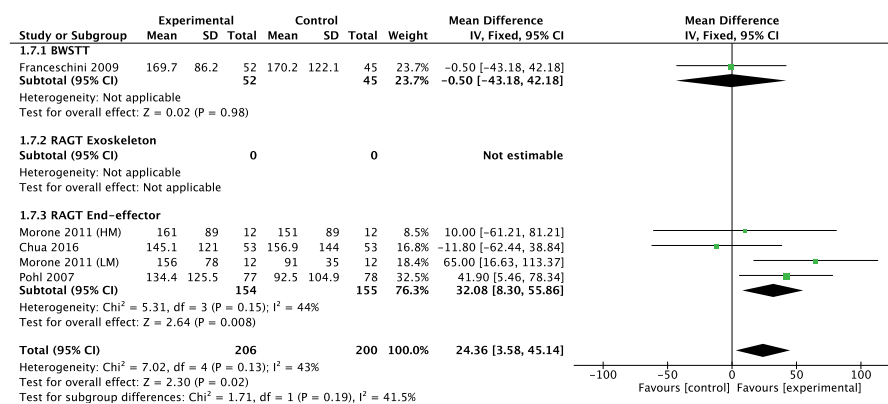


Fig. S5. Walking endurance (6-min walk test, m) post-intervention.

Supplementary material to article by J. Schröder et al. et al. "Feasibility and effectiveness of repetitive gait training early after stroke: a systematic review and meta-analysis"

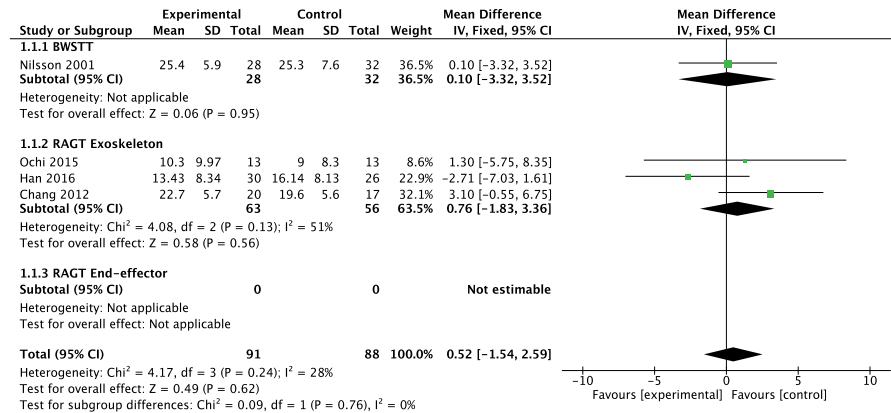


Fig. S6. Motor control (Fugl-Meyer Assessment motor subscale for the lower extremity) post-intervention.

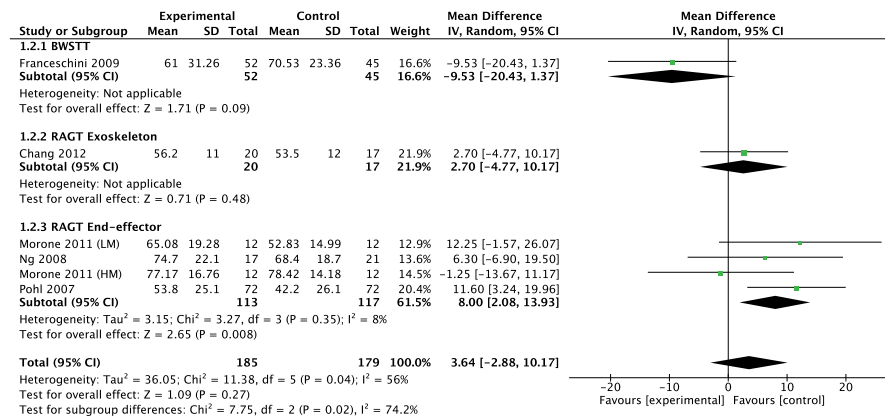


Fig. S7. Muscle strength (Motricity Index subscale for the lower extremity) post-intervention.

Supplementary material to article by J. Schröder et al. et al. "Feasibility and effectiveness of repetitive gait training early after stroke: a systematic review and meta-analysis"

Table SI. Search strategy used in PubMed

Search Strategy in PubMed	Results
((("Stroke"[Mesh] OR "stroke"[All Fields]) OR ("cerebrovascular accident"[All Fields] OR "cerebrovascular"[All Fields] AND "accident"[All Fields])) AND ("acute"[All Fields] OR "sub-acute"[All Fields] OR "subacute"[All Fields] OR "early"[All Fields] OR "inpatient"[All Fields] OR "in-patient"[All Fields]) AND (("Exercise"[Mesh] OR "Exercise"[All Fields] OR "Exercises"[All Fields] OR "Exercise therapy"[All Fields] OR ("Exercise"[All Fields] AND "therapy"[All Fields])) OR ("physical therapy modalities"[MeSH Terms] OR "physical therapy"[All Fields] OR ("physical"[All Fields] AND "therapy"[All Fields]) OR "active therapy"[All Fields] OR ("active"[All Fields] AND "therapy"[All Fields])) OR ("rehabilitation"[All Fields] OR "rehabilitation"[MeSH Terms]) OR "training"[All Fields] OR "treadmill"[All Fields] OR ("task-specific"[All Fields] OR "taskspecific"[All Fields] OR ("task"[All Fields] AND ("specific"[All Fields] OR "specificity"[All Fields]))) AND ("Walking"[Mesh] OR "walking"[All Fields] OR "Locomotion"[Mesh] OR "Early Ambulation"[Mesh] OR "ambulation"[All Fields] OR "gait"[Mesh] OR "gait"[All Fields] OR "mobility"[All Fields])) AND ("Randomized Controlled Trial"[Publication Type] OR "randomized controlled trials as topic"[MeSH Terms] OR "randomized controlled trial"[All Fields] OR "randomised controlled trial"[All Fields] OR "RCT"[All Fields])	24/10/2017: 331 Hits

Table SII. Detailed scoring on methodological quality using the Physiotherapy Evidence Database Scale (PEDro) scale

	Eligibility criteria	Random allocation	Concealed allocation	Baseline comparability	Blind subjects	Blind therapists	Blind assessors	Adequate follow-up	Intention-to-treat analysis	Between-group comparisons	Point estimates and variability	Score
Peurala et al. (48) 2009	x	x	x	x						x	x	5
Chang et al. (38) 2012	x	x	x	x			x	x		x	x	7
Tong et al. (39) 2006	x	x		x			x	x	x	x	x	7
Ng et al. (42) 2008	x	x		x				x	x	x	x	6
Morone et al. (43) 2011	x	x		x			x		x	x	x	6
Morone et al. (44) 2012		x		x			x	x	x	x	x	7
Han et al. (49) 2016	x	x		x			x			x	x	5
Schwartz et al. (45) 2009	x	x		x			x		x	x	x	6
Ochi et al. (46) 2015	x	x	x	x			x			x	x	6
Chua et al. (40) 2016	x	x	x	x			x		x	x	x	7
Pohl 2007	x	x	x	x			x	x	x	x	x	8
Franceschini 2009	x	x		x			x		x	x	x	6
Ada et al. (36) 2010	x	x	x	x			x	x	x	x	x	8
Dean et al. (37) 2010	x	x	x	x			x	x	x	x	x	8
Nilsson et al. (41) 2001	x	x	x	x			x	x		x	x	7
	14/15	15/15	8/15	15/15	0/15	0/15	13/15	8/15	10/15	15/15	15/15	